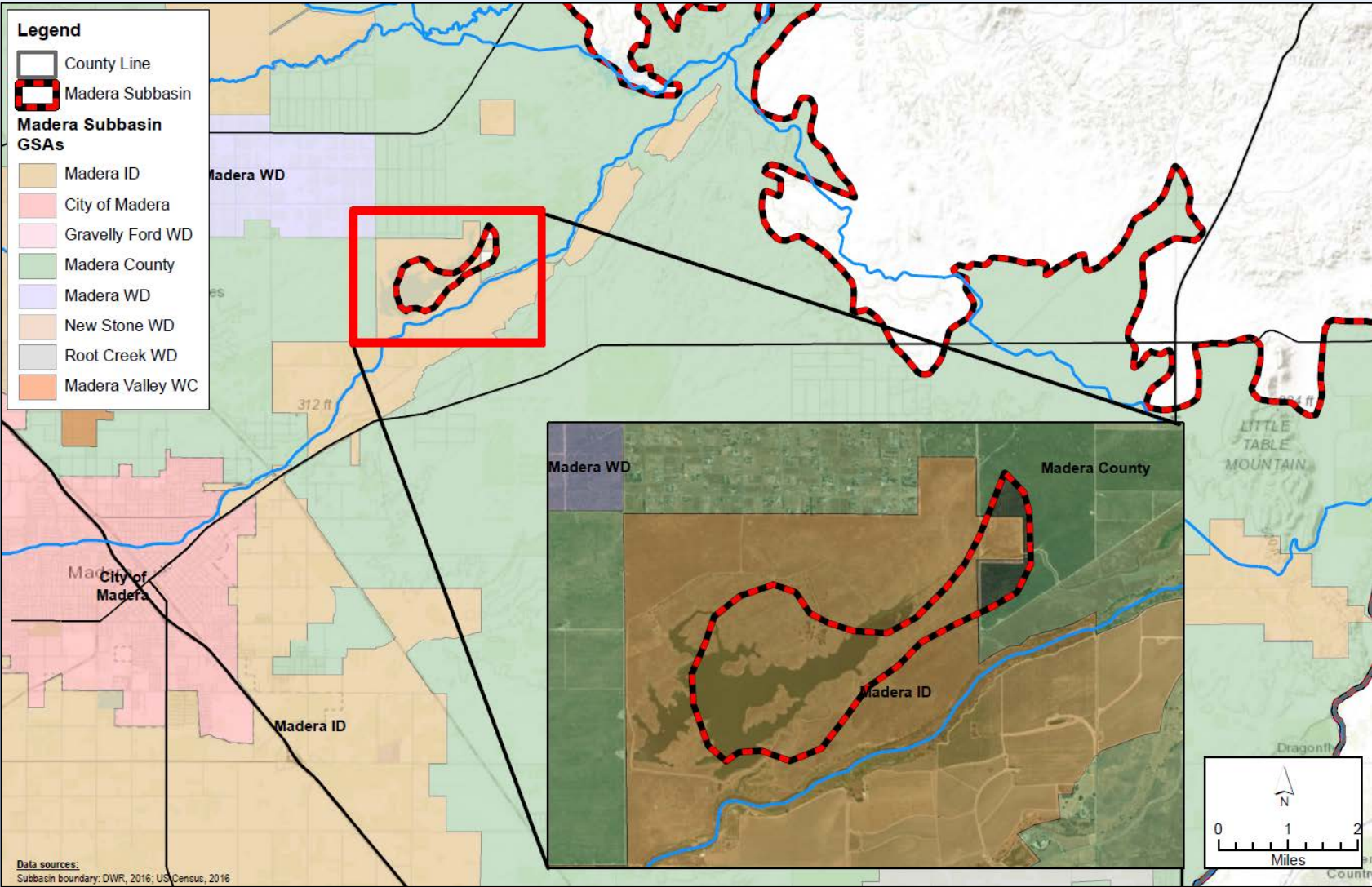


Madera Subbasin Basin Boundary Modification Discussion

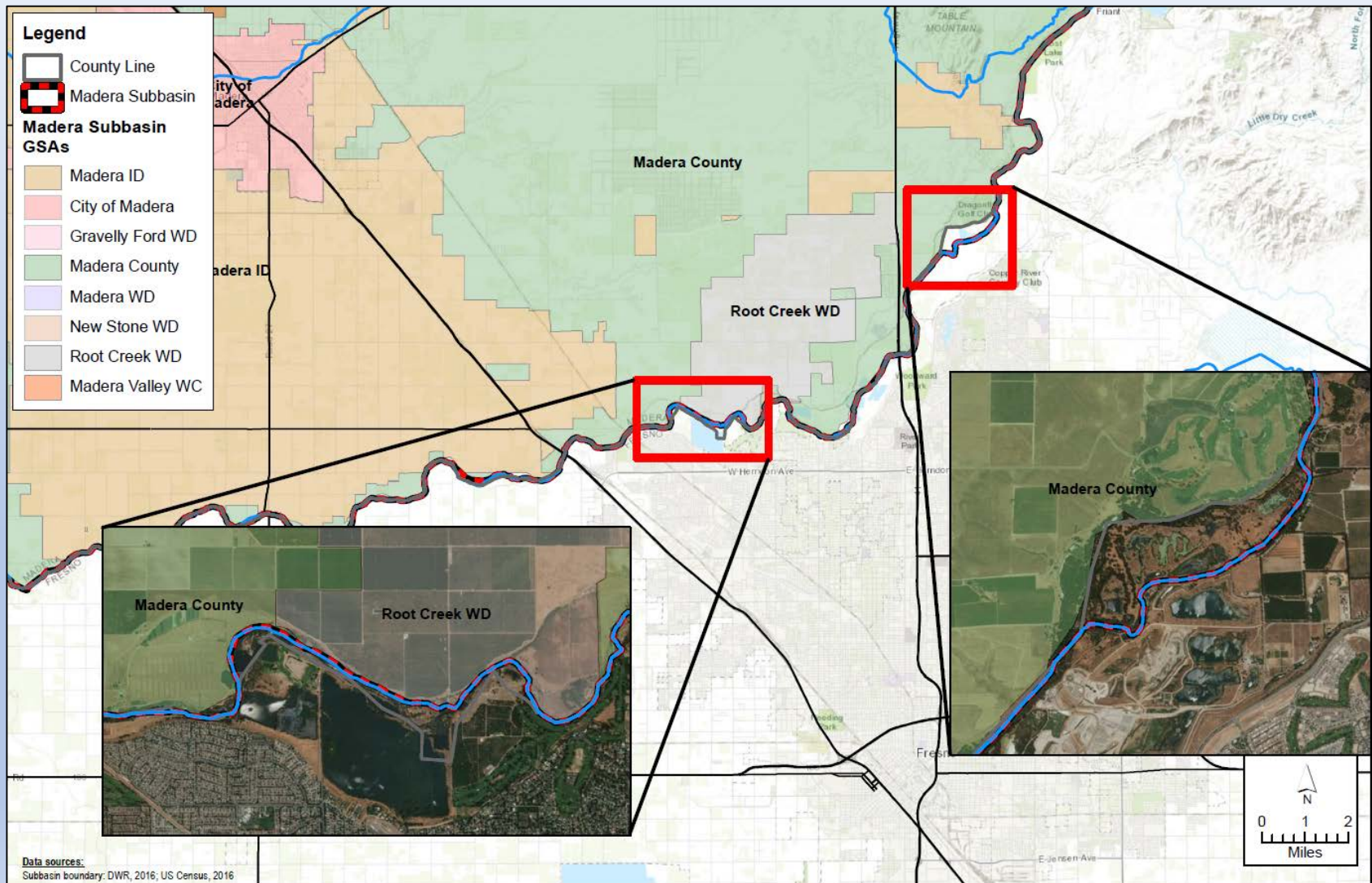
Madera Lake



Madera Lake

- Approximately 380 acres
- Apparently inadvertently excluded from subbasin
- No apparent hydrogeologic basis
- Does not align with water body
- Mostly MID area but some Madera County
- Likely addressed with letter from affected GSAs

San Joaquin River



San Joaquin River

- **Boundary poorly aligned with Madera County and other GSAs**
- **Largest misalignments:**
 - **Approx. 323 acres in Fresno County**
 - **Approx. 120 acres Root Creek WD in Kings Subbasin**
 - **Various other minor misalignments apparent in comparison of GIS datasets**
- **No apparent hydrogeologic basis**
- **Will require formal basin boundary modification request to address**