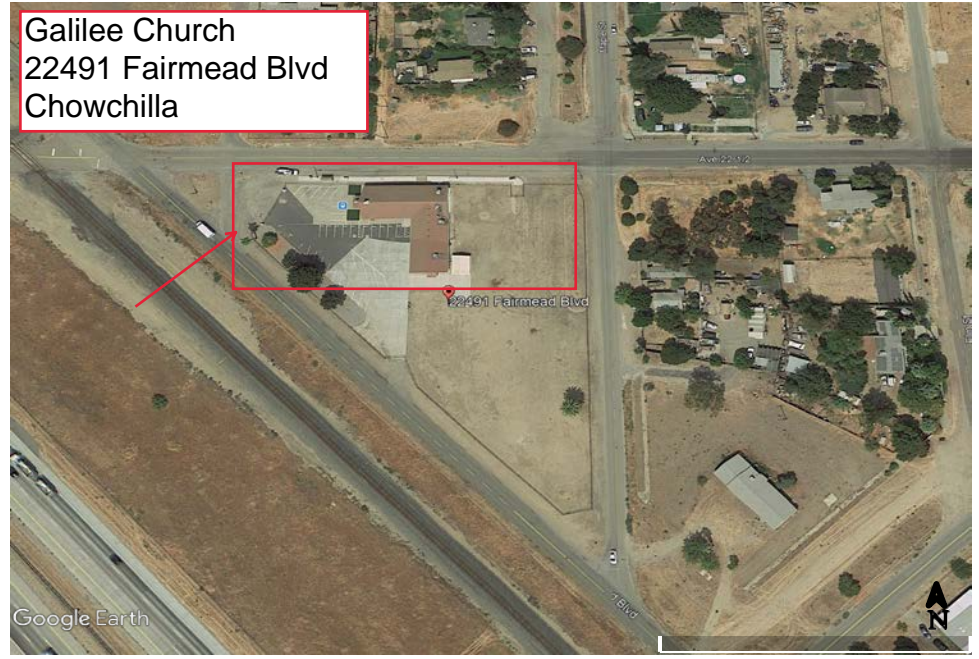


Agriland  
23500 Avenue 24  
Chowchilla



Galilee Church  
22491 Fairmead Blvd  
Chowchilla



Ellis Street Basin  
Corner Of Ellis Street  
and Country Club Drive



1. Founded in 1990 by James R. Maxwell, Agriland Farming Company started in Madera County California with approximately 1,800 acres. As Agriland has gained the confidence of its clients through dedication to our “client first” management style and transparent accounting practices, it has grown to manage over 27,000 acres and, according to American Fruit Grower Magazine, is the 3rd largest Nut grower in the United States. Agriland’s farm management segment has grown steadily as a result of “Word of Mouth” referrals and from significant expansion on the part of existing clients who annually increase their agricultural holdings.

2. Fairmead is an unincorporated, disadvantaged community located in Northern Madera County, approximately 11 miles northwest of the City of Madera and about 4 miles south of Chowchilla. The community is provided water service by Madera County Maintenance District #33 (MD-33) and serves approximately 162 connections, a school, and about 568 people. Water is currently supplied from 1 well, but has experienced a significant decrease in capacity over the years. Fairmead is also home to Fairmead & Friends - a community non-profit organization, whose mission is to make Fairmead a better community to live in by advocating for health justice, safer environments, and community resources. Fairmead & Friends and SHE are working to secure funding for a secondary source, as well as the addition of individual meters for the water system.

3. Madera Irrigation District and Madera County worked cooperatively to construct a 180-ft. pipeline to connect MID’s Lateral 24.2 canal to the County’s Ellis Street Basin in early 2016. When water is available, a lift pump is used to convey the water through a meter to the County’s basin. The total project cost of approximately \$24,000 created recharge abilities years to come.