

# MADERA JOINT GSP

Stephanie Anagnoson

Director of Water & Natural Resources

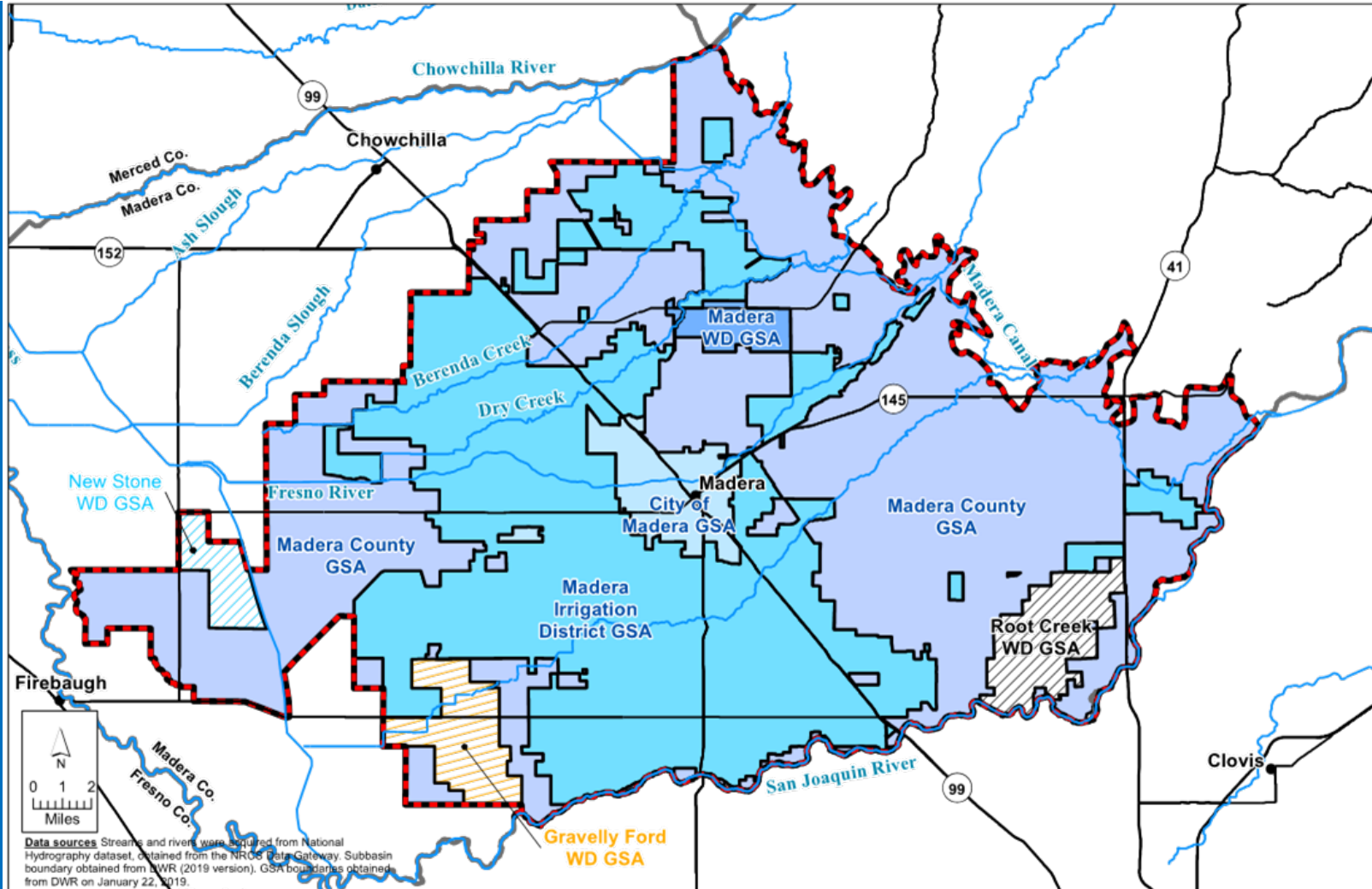
July 9, 2019

# THE GROUNDWATER SUSTAINABILITY AGENCIES (GSAS)

- Seven GSAs
  - Madera County GSA
  - Madera Irrigation District GSA
  - City of Madera GSA
  - Madera Water District GSA
  - Gravelly Ford Water District GSA
  - Root Creek Water District GSA
  - New Stone Water District GSA
- Four GSPs

Groundwater Sustainability Plan (GSP)	Groundwater Sustainability Agency (GSA)
Joint Madera Subbasin GSP	Madera County GSA Madera Irrigation District GSA City of Madera GSA Madera Water District GSA
Gravelly Ford GSP	Gravelly Ford Water District GSA
Root Creek GSP	Root Creek Water District GSA
New Stone GSP	New Stone Water District GSA

# MADERA SUBBASIN

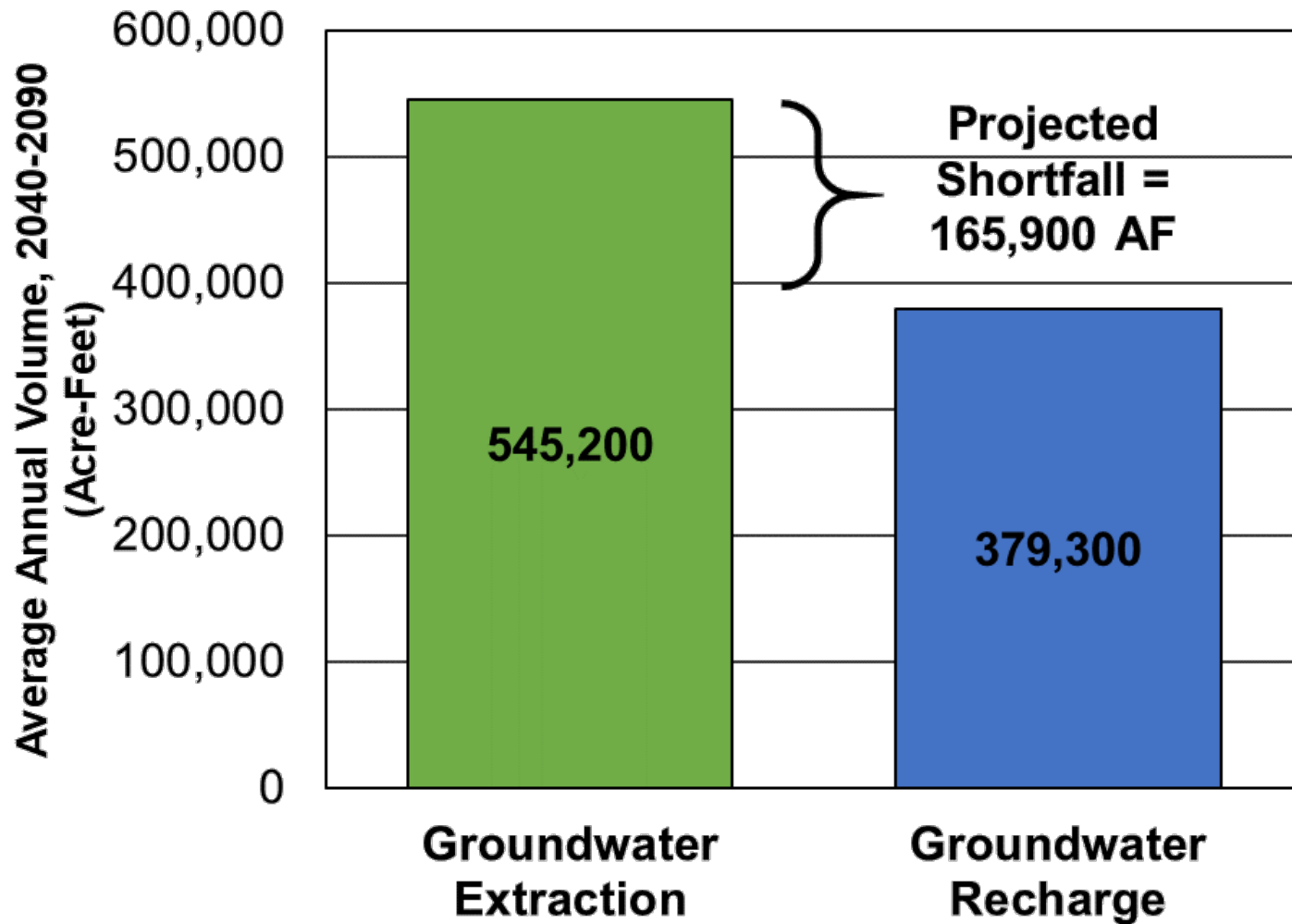


- Total area  
~ 348,000 ac
- Irrigated  
(2015)  
~ 216,000 ac

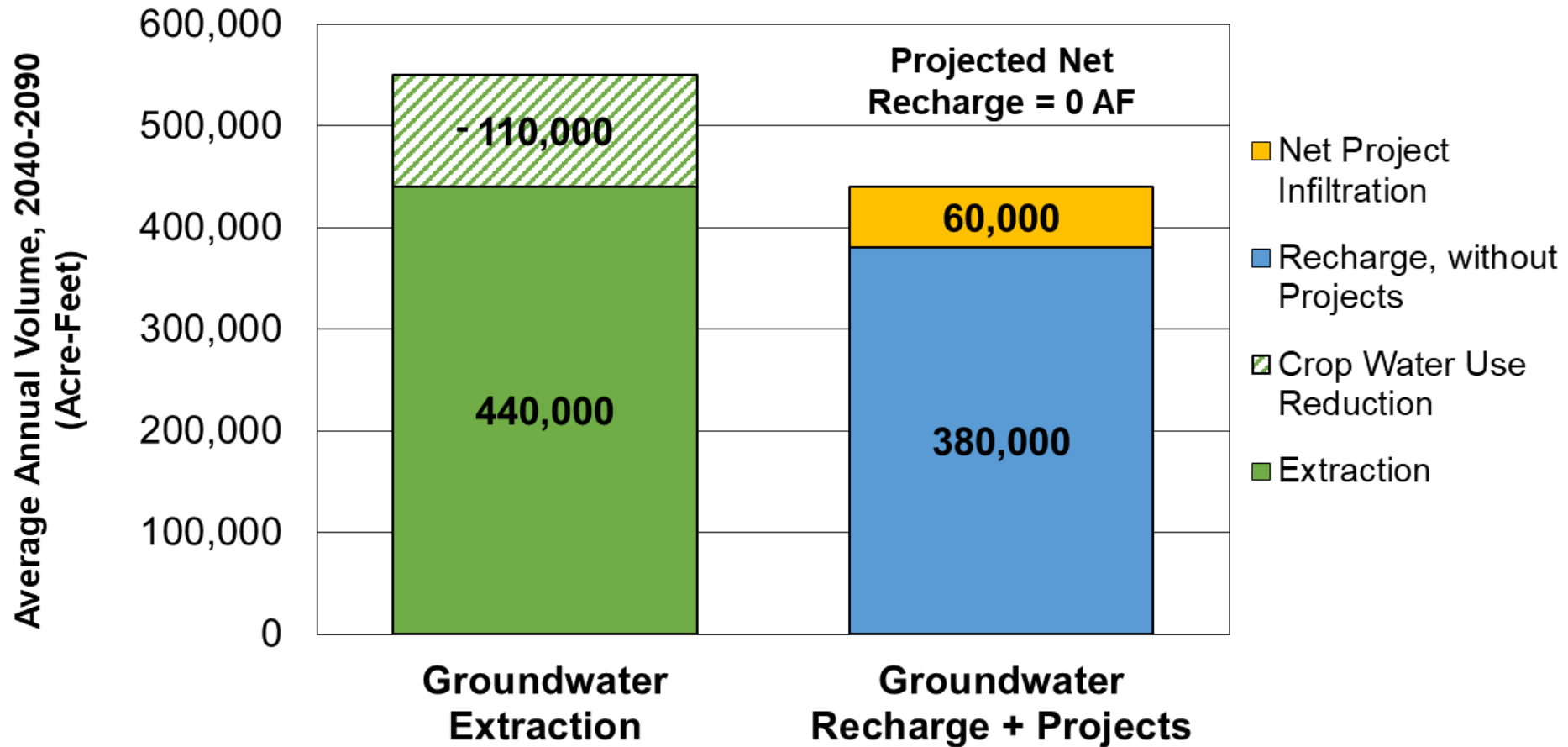
# MADERA SUBBASIN

<b>GSA</b>	<b>GSA Area, Acres</b>
<b>Madera County GSA</b>	177,800
<b>Madera Irrigation District GSA</b>	134,100
<b>City of Madera GSA</b>	10,100
<b>Root Creek Water District GSA</b>	9,300
<b>Gravelly Ford Water District GSA</b>	8,400
<b>New Stone Water District GSA</b>	4,200
<b>Madera Water District GSA</b>	3,700
	<b>347,600</b>

# SIMPLIFIED GROUNDWATER CONDITION NO ACTION 2040-2090



# SIMPLIFIED GROUNDWATER CONDITION WITH PROJECTS (2040-2090)



Crop Water Use Reduction Program: Madera County GSA 90,000 af. Remaining reduction in groundwater extraction due to permanent recharge basins replacing irrigated area and increased use of surface water in lieu of groundwater.

# PROJECTS/MANAGEMENT ACTIONS

- In general, water projects fall into these categories:
- Water purchases
- Use of flood flows
- On-farm recharge
- Large-scale recharge basins
- Demand reduction (County GSA only)

# PROJECTS

GSA	Estimated Capital Cost	Estimated Average Annual Operating Cost
	(\$, millions)	(\$/year, millions)
MWD	14.90	0.90
MID	18.56	10.28
City of Madera	0.02	0.00
Madera County	218.10	36.42
GFWD	See GFWD GSP	
NSWD	See NSWD GSP	
RCWD	See RCWD GSP	
<b>Total</b>	<b>251.57</b>	<b>47.60</b>



# NEXT STEPS

- Attend your GSA meetings
- **City of Madera GSA** - August 7, September 4, October 2
  - 6 p.m. at the City Council Chambers, 205 West Fourth Street, Madera, CA 93637
- **County of Madera GSA** - August 6, September 3, October 1
  - 10 a.m. at the Board of Supervisors Chambers, 200 West Fourth Street, Madera, CA 93637
- **Madera Irrigation District GSA** - July 30, September 17, October 15
  - 2 p.m. at Madera Irrigation District, 12152 Road 28 ¼, Madera, CA 93637
- **Madera Water District GSA** - July 10, August 14, September 11
  - 9 a.m. at Blankenship & Company, 1663 North Schnoor Street, Suite 105, Madera, CA 93637
- Read the GSP and submit comments
  - <http://www.maderacountywater.com/maps/madera-subbasin/> for comment form
  - [MaderaGSPComments@maderacounty.com](mailto:MaderaGSPComments@maderacounty.com) for comment submittal
- Attend the Joint GSP Meeting on August 7<sup>th</sup> at the community college (details to come)

# CHOWCHILLA GSP

Stephanie Anagnoson

Director of Water & Natural Resources

July 9, 2019

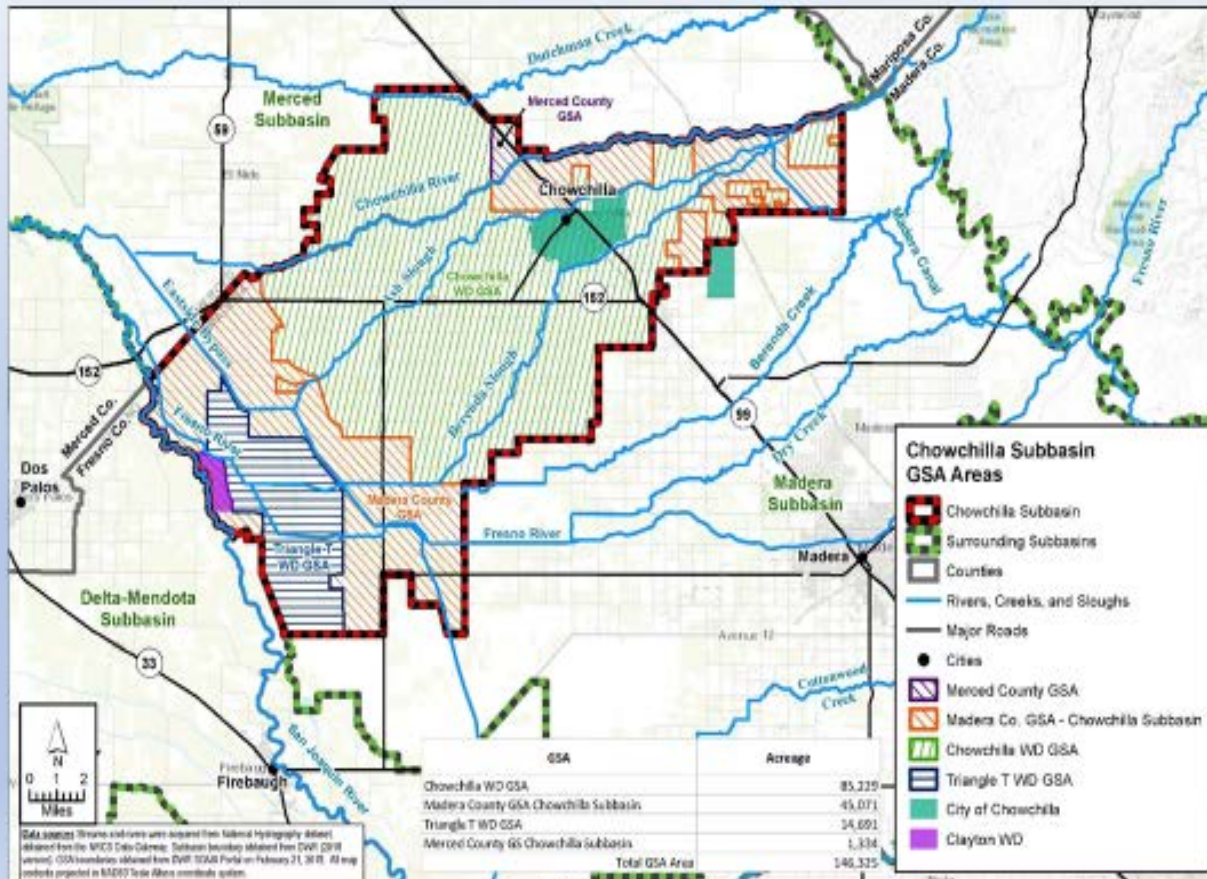
# THE GROUNDWATER SUSTAINABILITY AGENCIES (GSAS)

- Four (4) GSAs
  - Chowchilla Water District GSA
  - Madera County GSA
  - Triangle T GSA
  - Merced County GSA
- One (1) GSP

Groundwater Sustainability Plan (GSP)	Groundwater Sustainability Agency (GSA)
Joint Chowchilla Subbasin GSP	Chowchilla Water District GSA Madera County GSA Triangle T GSA Merced County GSA

# CHOWCHILLA SUBBASIN

## Chowchilla Subbasin GSAs

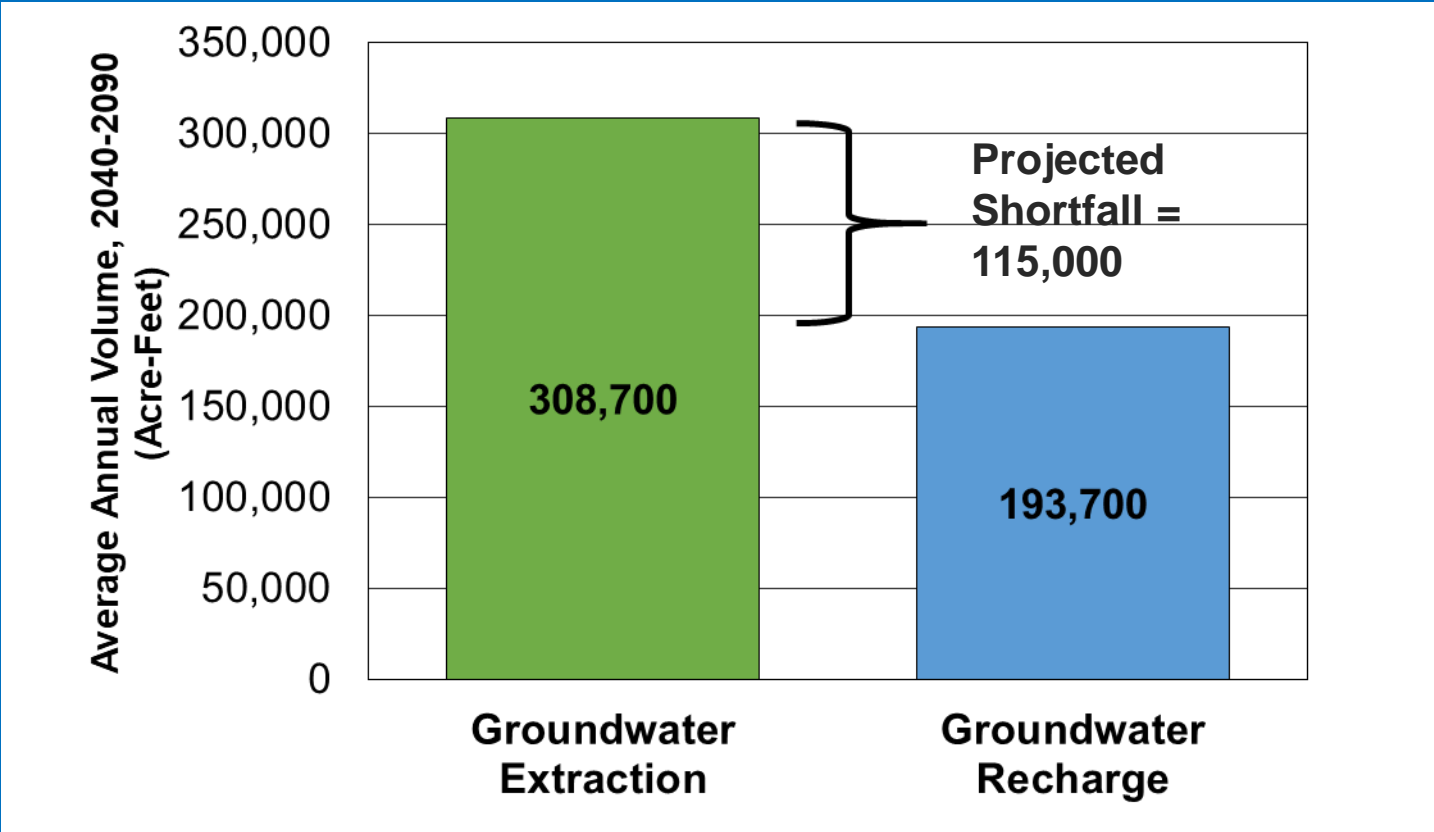


- Total area  
146,300 ~ ac
- Irrigated  
(2015)  
124,349 ~ ac

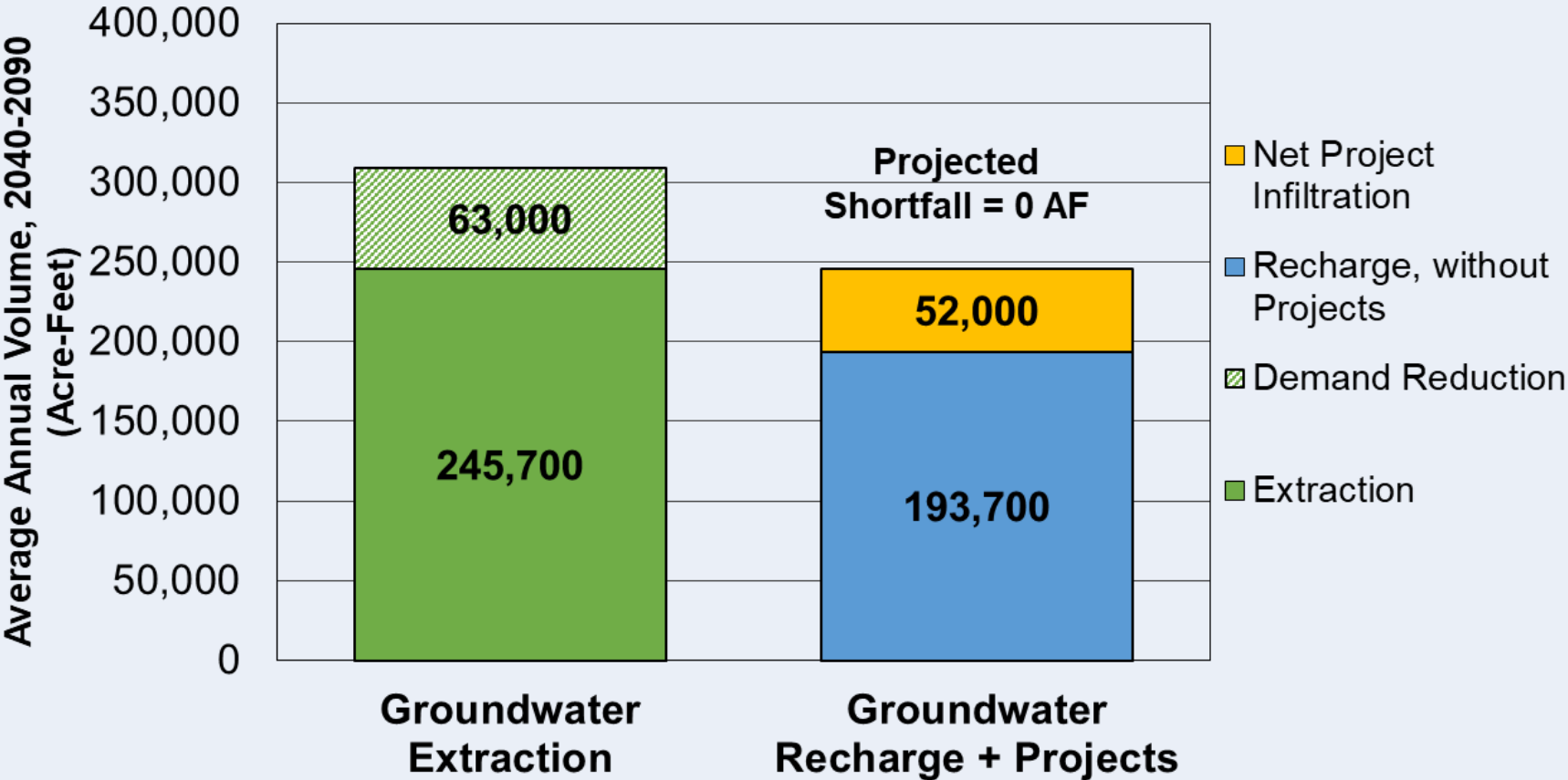
# CHOWCHILLA SUBBASIN

<b>GSA</b>	<b>GSA Area, Acres</b>
<b>Chowchilla Water District GSA</b>	85,200
<b>Madera County GSA</b>	45,100
<b>Merced County GSA</b>	1,300
<b>Triangle T Water District GSA</b>	14,700
	<b>146,300</b>

# SIMPLIFIED GROUNDWATER CONDITION NO ACTION 2040-2090



# SIMPLIFIED GROUNDWATER CONDITION WITH PROJECTS (2040-2090)



Crop Water Use Reduction Program: Madera County East 11,300 af, Madera County West 16,250 af, TTWD 1,700 af. Remaining crop water use reduction due to permanent recharge basins replacing irrigated area and increased use of surface water in lieu of groundwater.

# PROJECTS/MANAGEMENT ACTIONS

- In general, water projects fall into these categories:
- New Water
  - Water purchases
  - Use of flood flows
  - On-farm and large-scale recharge basins
- Infrastructure improvements
  - Enlargement of Buchanan Dam
  - Merced-Chowchilla Intertie
  - Enlargement of Madera Canal
- Demand reduction (County-only)



# CHOWCHILLA SUBBASIN PROJECTS

GSA <sup>1</sup>	Estimated Capital Cost (\$, millions)	Estimated Average Annual Operating Cost (\$/year, millions)
CWD	160.2	2.6
Madera County	122.0 <sup>3</sup>	21.4 <sup>3</sup>
SVMWC <sup>2</sup>	7.5	0.3
TTWD	29.7	5.2
<b>Total</b>	<b>319.4</b>	<b>29.5</b>

- <sup>1</sup>Projects and management actions summarized by each GSA or local agency responsible for implementation.
- <sup>2</sup>SVMWC includes portions of both Madera County GSA and Merced County GSA.
- <sup>3</sup>Additional costs of demand management are manifested in reduced economic activities in the county, this includes approximately \$19.1 million per year in direct economic impacts alone (excluding multiplier effects).

# NEXT STEPS

- Attend your GSA Meeting
- **County of Madera GSA - August 6**
  - 10 a.m. at the Board of Supervisors Chambers, 200 West Fourth Street, Madera, CA 93637
- Chowchilla Water District GSA – July 17
  - 1:30 p.m. at the Chowchilla Water District, 327 S Chowchilla Blvd, Chowchilla, CA 93610
- Merced County GSA – As necessary, before or after BOS meeting
- Triangle T Water District - July 11
  - 10 a.m. at Triangle T Water District, 4400 Hays Drive, Chowchilla, CA 93610
- Read/comment on the GSP
- Attend the Subbasin Meeting on July 31<sup>st</sup> at 10 a.m. at Portuguese Hall in Chowchilla