

# Madera County Groundwater Sustainability Agencies

---

County GSAs Fee Study – Fee Adoption

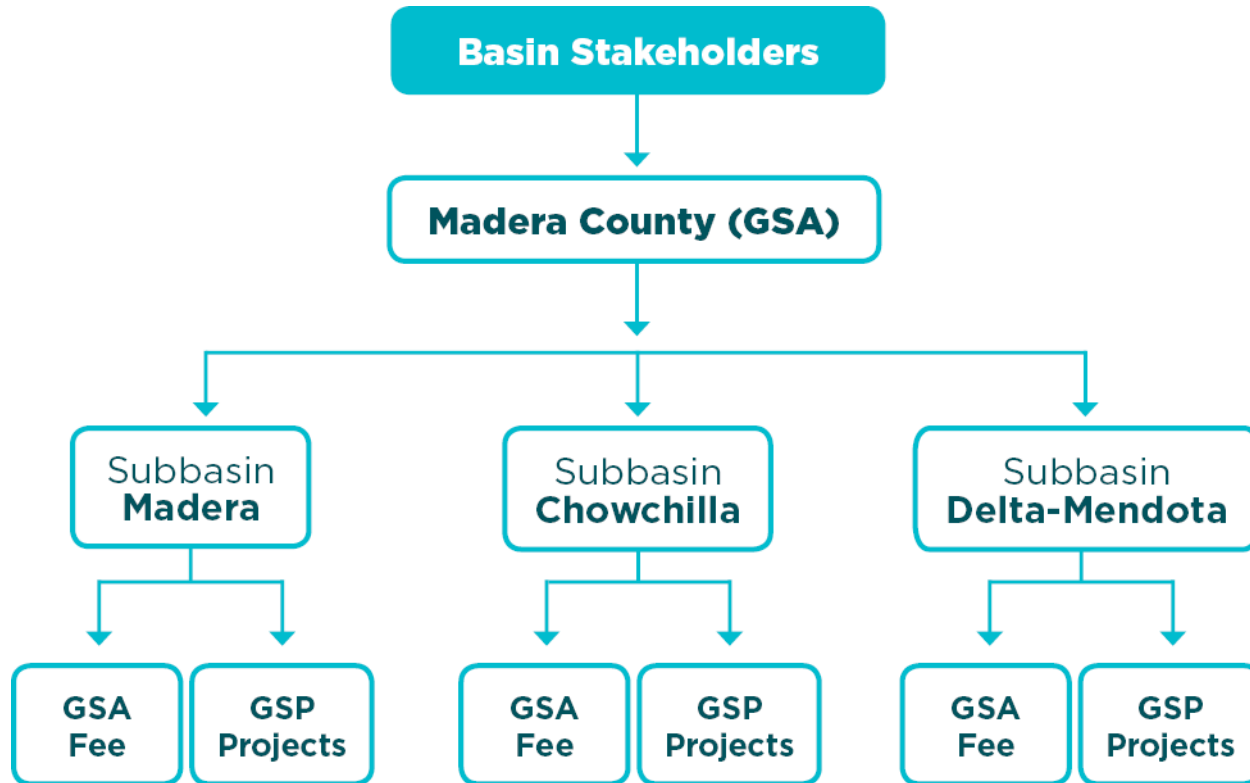
November 12, 2019

# Agenda

- Study Timeline and Outreach
- Study Process
- Proposed Fees
- Fee Comparison
- Variance/Appeal Process
- Implementation Steps



# GSA's Organizational Structure



# Study Schedule

Item	Deliverables/Meetings	Date
Study Initiation	Kickoff Meeting	June 6, 2019
Data Analysis		June-September 2019
Policy Objectives	Board Meeting	September 3, 2019
Fee Selection	Board Meeting	October 8, 2019
Fee Study Report	Study Report	October 22, 2019
First Public Notice		October 23, 2019
Second Public Notice		October 30, 2019
Third Public Notice		November 6, 2019
Proposed Fee Adoption	Board Meeting	November 12, 2019
GSPs Adoption	Board Meeting	December 17, 2019
Fees Implemented		Fall 2020



# Public Outreach

Group	Deliverables/Meetings	Date
Board of Supervisors	Policy Objectives	September 3, 2019
Clayton Water District	Board Meeting	September 4, 2019
County GSAs	County GSA Meeting Advisory Committee Meeting	September 3, 2019 October 8, 2019 September 5, 2019 October 3, 2019
Chowchilla Water District	GSA Meeting	September 11, 2019
Madera/Chowchilla Resource Conservation District	Meeting	September 11, 2019
Gravelly Ford Water District	GSA Meeting	September 16, 2019

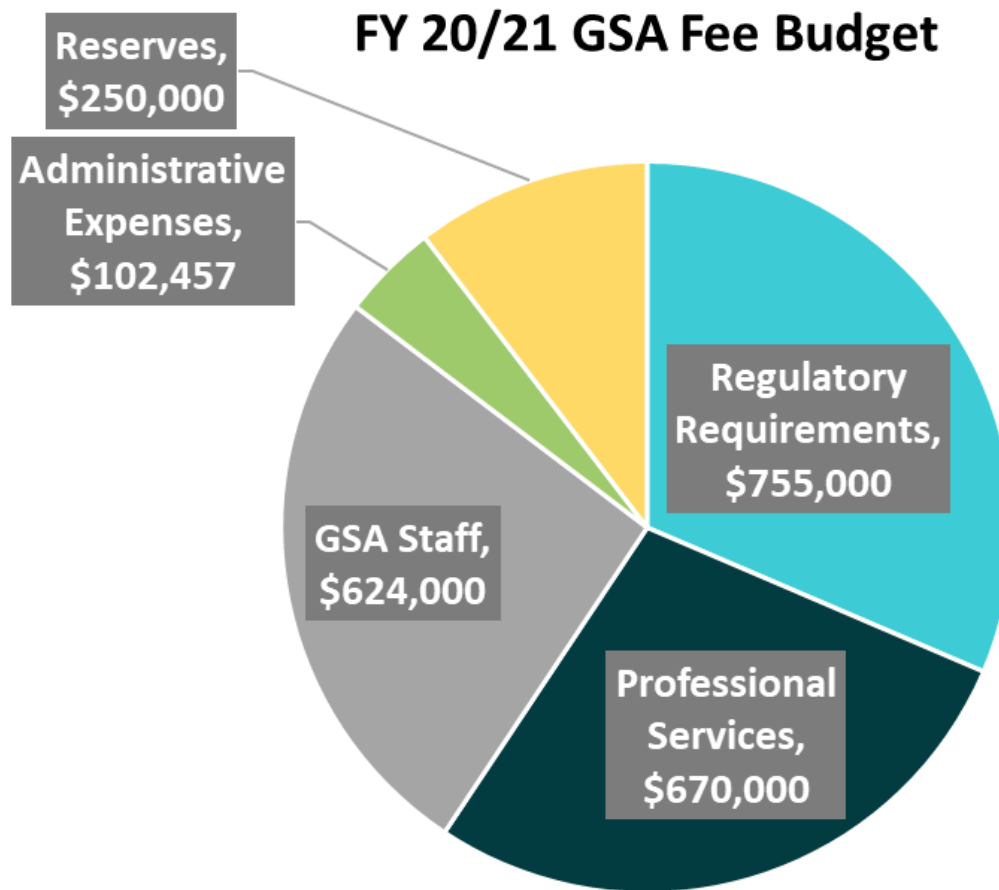


# Public Outreach

Group	Deliverables/Meetings	Date
Madera/Chowchilla Resource Conservation District	Meeting	October 9, 2019
Gravelly Ford Water District	GSA Meeting	October 21, 2019
Sierra Vista Mutual Water Co.	Meeting	October 22, 2019
Red Top Landowners	Meeting	October 23, 2019
Chowchilla GSP Advisory Committee	Advisory Committee Meeting	October 23, 2019
Regional Water Management Group	Meeting	October 28, 2019
Madera Ag Water Association	Meeting	October 30, 2019



# GSA Budget FY 20/21: \$2.4 million



# Decision Points

- **Irrigated Acreage:** Fees will be assessed only on the irrigated acreage of a parcel. This correlates the fee for executing the GSP to those parcels benefiting from past and current use of groundwater.
- **Classes Levied:** All irrigated acreage within the County GSA managed areas are subject to the GSA fee, except for de minimis users of water.
- **Rural Residential:** In the context of SGMA rural residential parcels are de minimis extractors and are therefore exempt from the fee.
- **Grazing/ Rangeland:** Any irrigated acreage of a parcel classified as Grazing/Rangeland is included in the Agriculture use class and the fee will be levied on the irrigated portion of the parcel.
- **Overage Allowance:** Due to datasets from disparate sources, and subsequent merging and organizing of data, an allowance of 10 percent is made to account for variance between irrigated area estimated across parcels.
- **Equity between Classes:** The Board elects to treat all irrigated acreage the same, regardless of land classification or agricultural crop type. Therefore each parcel levied will pay the same uniform rate per irrigated acre.



# Proposed Fees

User Class	Irrigated Acres*	Fee (\$/Irrigated Acre)
Irrigated Agriculture	96,840	\$22.45
Irrigated land within Grazing/Rangeland	3,271	\$22.45
Other	6,868	\$22.45
Residential	N/A	N/A
<b>Total</b>	<b>106,979</b>	

*\*10% allowance for irrigated acreage estimate*

# State (SWRCB) Intervention Fees

Fee Category	Fee Amount	Applicable Parties
Base Filing Fee	\$300 per well	All extractors
Unmanaged Area Rate	\$10 per AF metered \$25 per AF unmetered	Extractors in unmanaged areas
Probationary Basin Rate	\$40 per AF	Extractors in probationary basins
Interim Plan Rate	\$55 per AF	Extractors in interim plan basins
De minimis Fee	\$100 per well	Domestic and <2AFY

# County GSAs vs. Intervention Fees

	County GSAs	State (Probationary)
Residential Base Fee (\$/Year)	\$0	\$100
Non-Residential Base Fee (\$/Year)	\$0	\$300
<b>Non-Residential Extraction (\$/AF)</b>	<b>\$6.42*</b>	<b>\$40.00</b>

*\*\$22.45 / 3.5 feet per acre = \$6.42*

# Appeal Process

- Informal
  - › Contact County Assessor's office
  - › Conduct site evaluation (field visit and/or current landcover)
  - › Determine if estimated irrigated acreage is still accurate
    - i.e. land not abandoned, retire, or non-irrigated
  - › Preferred method and where vast majority of appeals are resolved
- Formal
  - › AAB could serve in additional role as GSA Irrigated Land Appeal Board
  - › BOS could serve as appeal board



# Recommendations

- Adopt proposed fees
- Adjust fee annually based on prior 12 months Consumer Price Index (CCI)
- Evaluate fee at five-year mark corresponding with the five-year GSP update
- Assess GSAs budget and funding annually



# Next Steps

- Request/Recommend adoption of proposed fees
- Submit schedule of affected parcels to County Treasurer/Tax Collector
  - › Before August 2020 for inclusion on property tax installment
- GSPs Adoption December 17
- GSP Implementation January 2020



# Thank you!

## Contacts:

Kevin Kostiuk

213 262 9309 / [kkostiuk@raftelis.com](mailto:kkostiuk@raftelis.com)

Sanjay Gaur

213 262 9304 / [sgaur@raftelis.com](mailto:sgaur@raftelis.com)



# Acreage Table

User Class	Total Acres	Total Acres (10% Allowance)	Irrigated Acres	Irrigated Acres (10% Allowance)
Irrigated Agriculture	124,384	111,946	107,600	96,840
Grazing/Range land	62,906	56,615	3,635	3,271
Other	15,022	13,520	7,631	6,868
Residential	13,170	11,853	N/A	N/A
<b>Total</b>	<b>215,482</b>	<b>182,081</b>	<b>119,004</b>	<b>106,979</b>

