

Madera County Groundwater Sustainability Agencies

GSA's Fee Evaluation– Preliminary Fee Results

October 8, 2019

Agenda

- Schedule Update
- Policy Review
- GSA Budget
- Fee Options
 - › Differentiated Fee
 - › Uniform Fee
- Next Steps



Public Outreach

Item	Deliverables/Meetings	Date
Policy Objectives	Board Meeting	September 3, 2019
Clayton Water District	Board Meeting	September 4, 2019
County GSAs	Advisory Committee Meeting	September 5, 2019
Chowchilla Water District	GSA Meeting	September 11, 2019
Madera/Chowchilla Resource Conservation District	Meeting	September 11, 2019
Gravelly Ford Water District	GSA Meeting	September 16, 2019



Study Schedule

Item	Deliverables/Meetings	Date
Policy Objectives	Board Meeting	September 3, 2019
Fee Selection	Board Meeting	October 8, 2019
Fee Study Report	Study Report	October 21, 2019
First Public Notice		October 23, 2019
Second Public Notice		October 30, 2019
Third Public Notice		November 6, 2019
Proposed Fee Adoption	Board Meeting	November 12, 2019
GSP Adoption	Board Meeting	December 2019
Fees Implemented		2020



Funding Authority

- Prop 26 exempt regulatory fees
 - › Defensible with SGMA and Water Code
 - › Least costly, least time consuming, and most efficient option
 - › Does not require periodic re-adoption



Fee Structure Evaluation

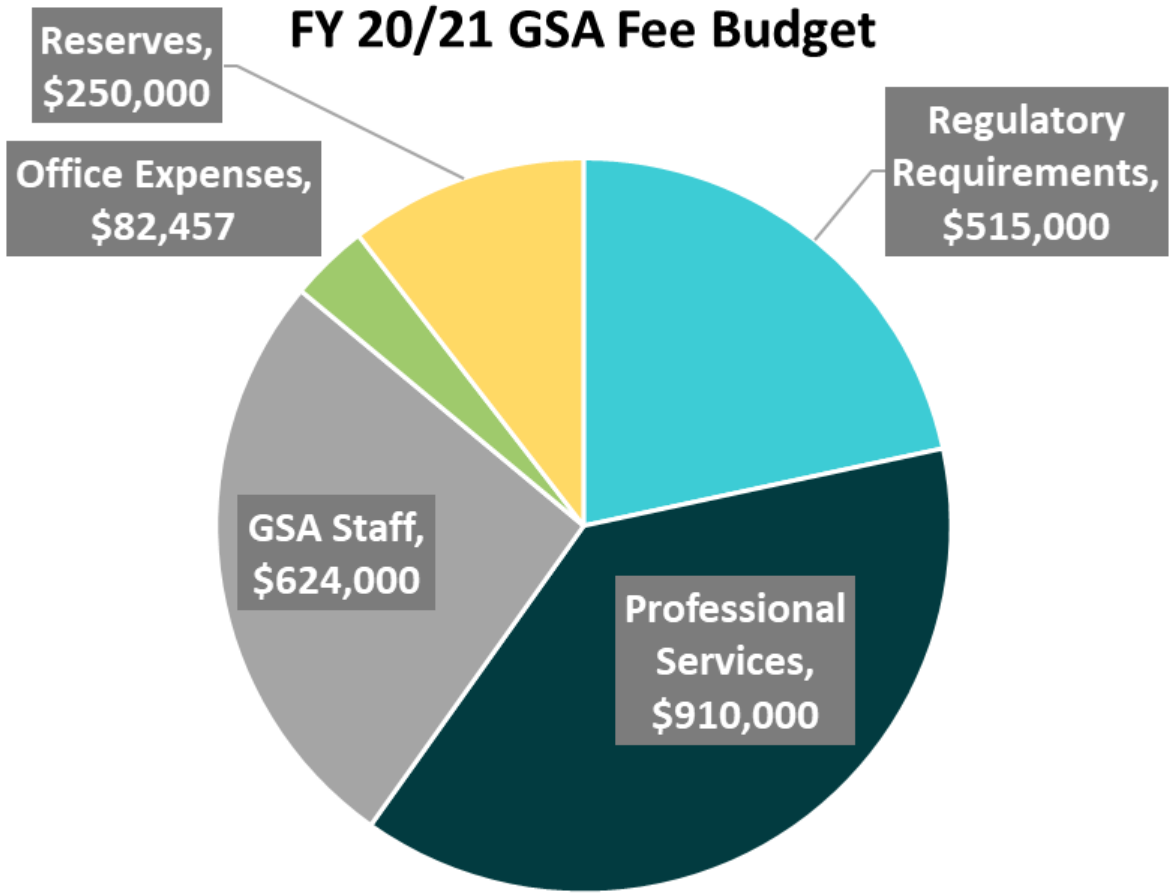
Policy Objective	All Parcels	Non-de minimis Parcels	Total Acreage	Irrigated Acreage	Est. Gross Pumping	Est. Net Pumping
Administration	★★★★★	★★	★★★★	★★	★	★
Equity	★★	★	★★	★★★★	★★★★★	★★★★★
Financial Stability	★★★★★	★★★★★	★★★★★	★★★★★	★★★★	★★★★
Affordability	★★	★	★★★★	★★★★	?	?

Budget Items

- Five major categories:
 - › Regulatory Requirements
 - › Professional Services
 - › County GSAs Staff
 - › Administrative Costs
 - › Contingency & Reserves



GSA Budget FY 20/21: \$2.4 million



Data

- Identify all parcels overlying County managed “white areas”
 - › Include parcel information (APN, acreage, land use class etc)
- Merge land cover data by parcel
- Organize parcels by subbasin and land use
- Categorize parcels by irrigated / non-irrigated and residential / non-residential
- Combine irrigated acreage from land cover and land use classification
- Cleanup w/County staff, Assessor’s Office, Raftelis staff, engineering consultant



Fee Calculation Steps

- Merge and organize County parcel data with GIS data
- Assign parcels to the following groups:
 - › Irrigated Agriculture
 - › Grazing/Rangeland
 - › Residential
 - › Other (government, commercial, industrial, etc.)
- Allocate budget between Irrigated Agriculture and all groups
- Determine fee per irrigated acre
- Residential users exempted (de minimis users)



Fee Option 1: Differentiated

User Class	Irrigated Acres	Fee (\$/Irrigated Acre)
Irrigated Agriculture	93,288	\$21.27
Grazing/Rangeland	3,635	\$15.75
Other	21,574	\$15.75
Residential	N/A	N/A
Total	118,496	

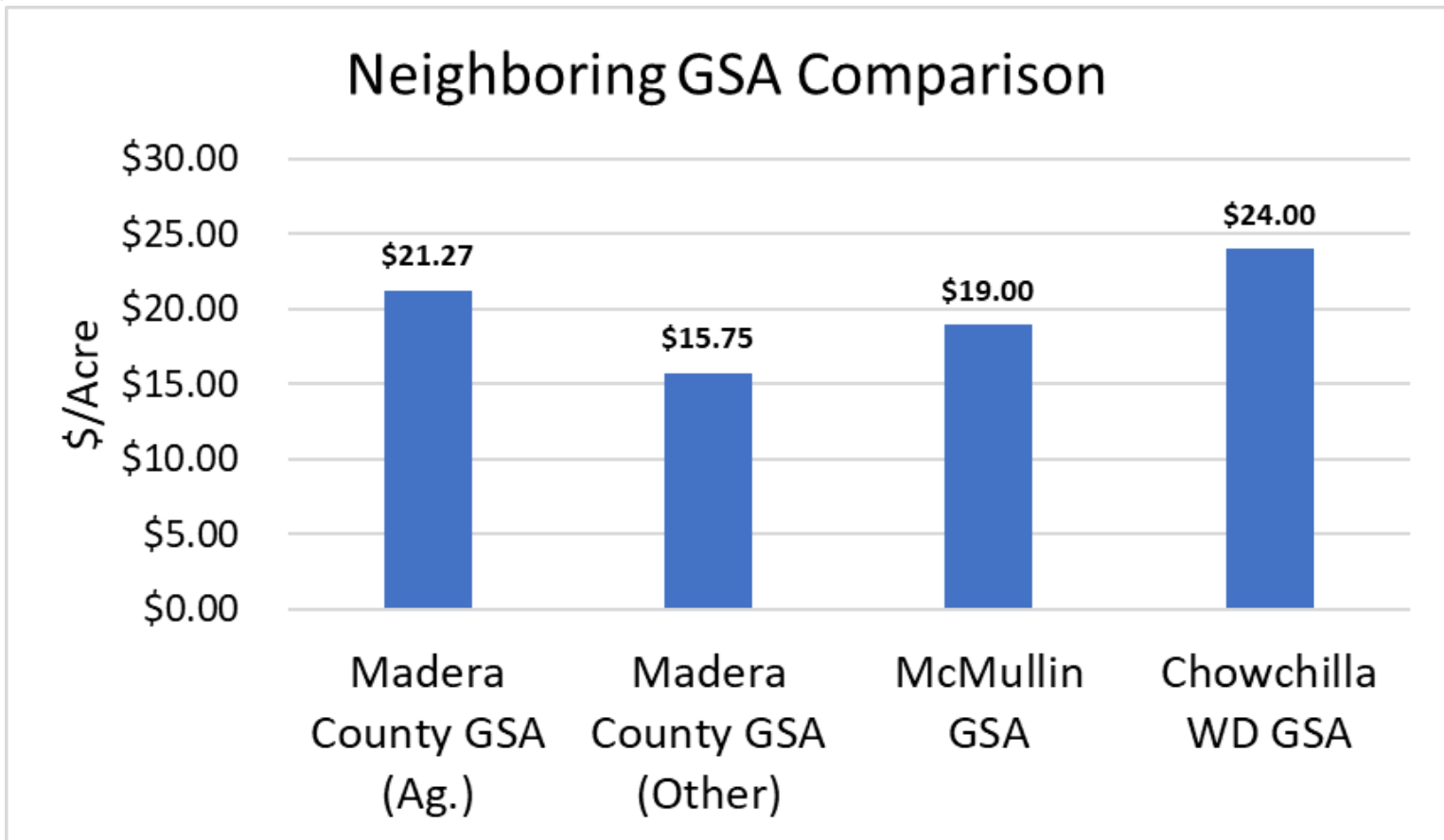


Fee Option 2: Uniform

User Class	Irrigated Acres	Fee (\$/Irrigated Acre)
Irrigated Agriculture	93,288	\$20.10
Grazing/Rangeland	3,635	\$20.10
Other	21,574	\$20.10
Residential	N/A	N/A
Total	118,496	



Neighboring GSAs Comparison



Next Steps

- Advisory Committee meeting October 3
- Document fee derivation (Study Report)
- Public Noticing (October 28-November 11)
- Fees considered for adoption November 12



Thank you!

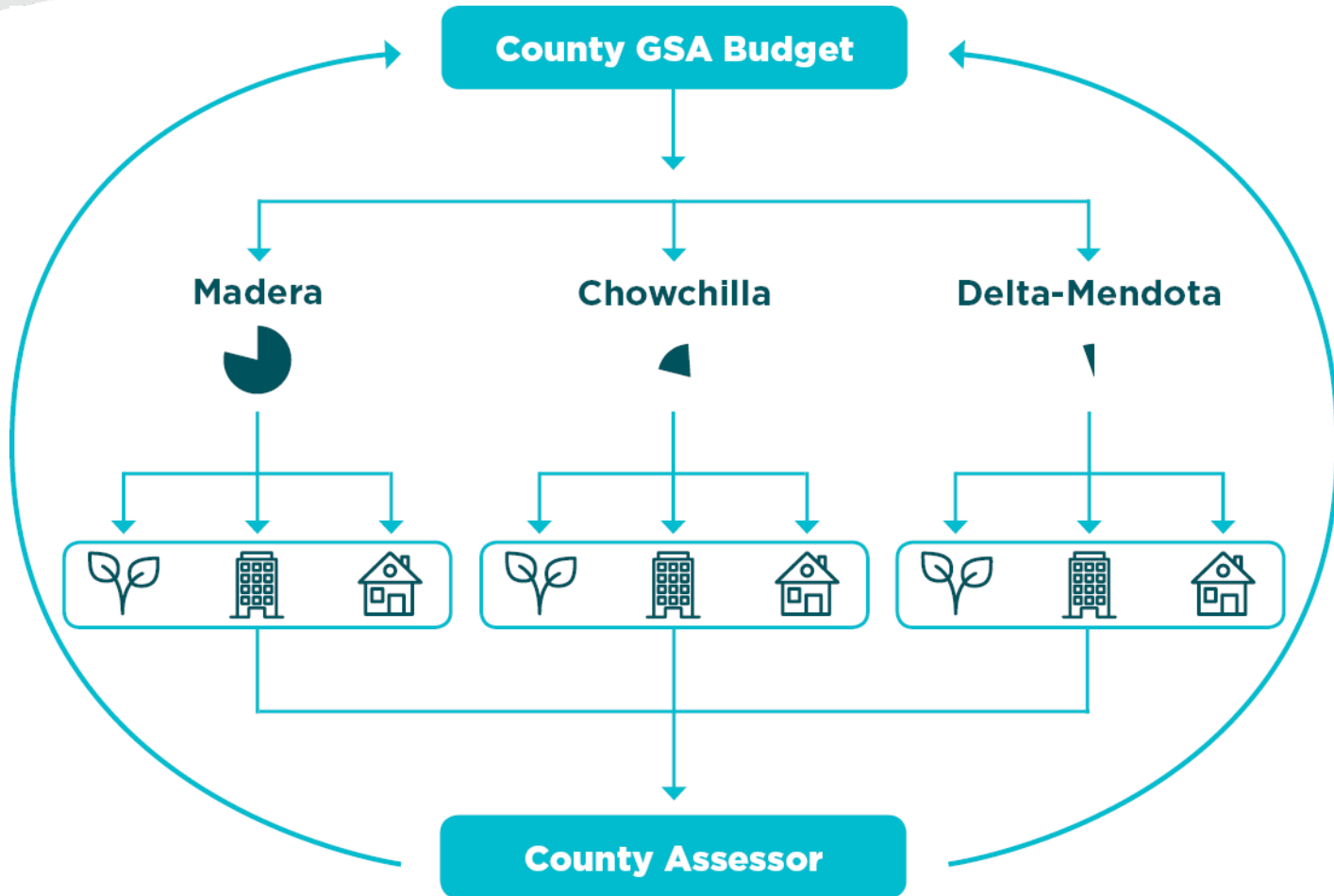
Contacts:

Kevin Kostiuk
213 262 9309 / kkostiuk@raftelis.com

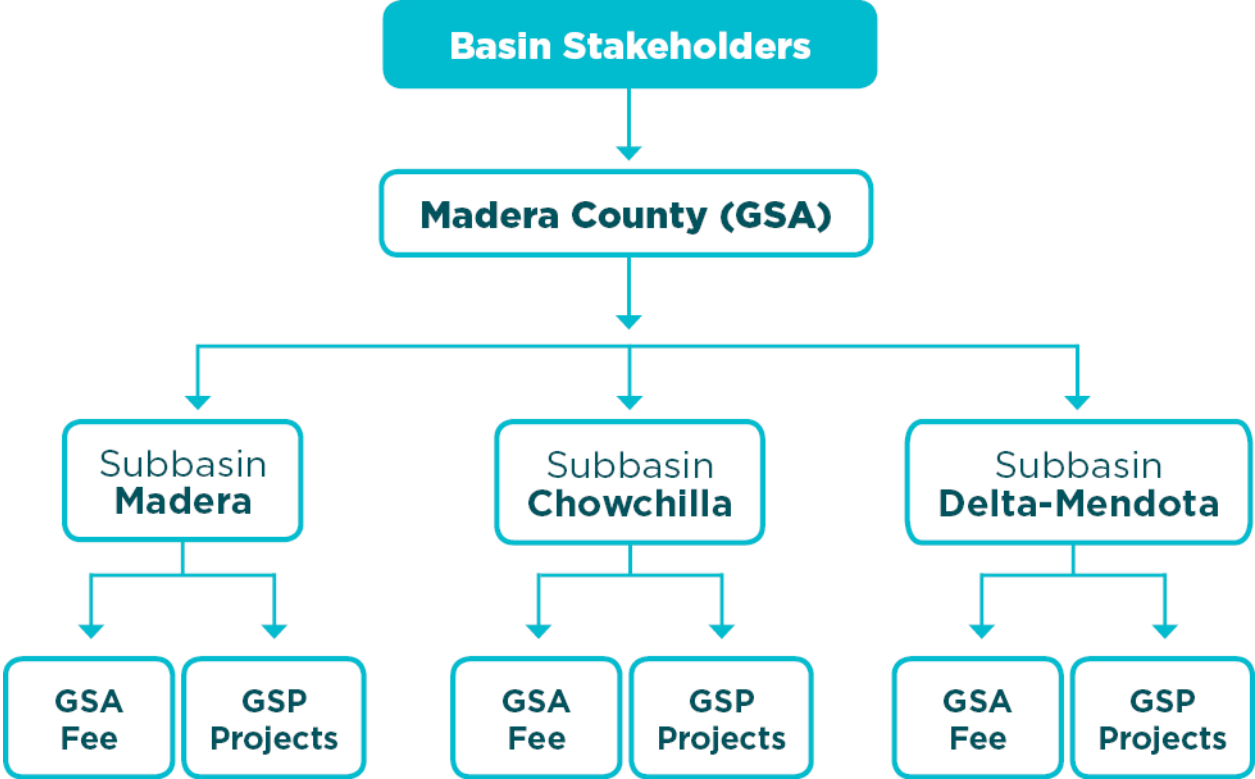
Sanjay Gaur
213 262 9304 / sgaur@raftelis.com



Fee Calculation Steps



GSA's Organizational Structure



Fee Option 1: Differentiated Total Acreage

User Class	Total Acres	Fee (\$/Acre)
Irrigated Agriculture	162,696	\$9.97
Grazing/Rangeland	79,306	\$6.81
Other	32,148	\$6.81
Residential	N/A	N/A
Total	274,151	



Fee Option 2: Uniform Total Acreage

User Class	Total Acres	Fee (\$/Acre)
Irrigated Agriculture	162,696	\$8.69
Grazing/Rangeland	79,306	\$8.69
Other	32,148	\$8.69
Residential	N/A	N/A
Total	274,151	



Acreage Table

User Class	Total Acres	Irrigated Acres
Irrigated Agriculture	162,696	93,288
Grazing/Rangeland	79,306	3,635
Other	32,148	21,574
Residential	N/A	N/A
Total	274,151	118,496

