



Madera County GSAs' Advisory Committee October 14, 2020

Guidelines for Zoom Webinar Format

1. Mute your audio and remain on mute throughout the webinar.
2. Use the Q & A function for any clarifying questions.
3. Use chat for any technical issues (e.g., I can't hear!)
4. Be courteous, polite, and mindful of lag time.
5. Keep in mind we are all doing our best in constantly changing circumstances.

Panelists	Participants
Use video so we can see you as an Advisory Committee member	Use computer/video to see the presentation and Committee members. You are not on video.
Mute yourself	You will be muted (but mute yourself too)
Use the "raise your hand" tool to be called on.	Use the "raise your hand" tool to be called on.



@MADERACOUNTY
maderacounty.com





Agenda for October 14, 2020

1. CALL TO ORDER
2. PLEDGE OF ALLEGIANCE
3. ROLL CALL
4. PUBLIC COMMENT
5. AMBASSADOR REPORT
6. DIRECTOR'S REPORT
7. DOMESTIC WELLS
8. RECHARGE
9. ALLOCATION DISCUSSION AND RECOMMENDATION
10. ADJOURNMENT

Next Meeting Dates at 2 p.m. on December 3.



@MADERACOUNTY
maderacounty.com





Item 1: Call to Order



@MADERACOUNTY
maderacounty.com





Item 2: Pledge of Allegiance



@MADERACOUNTY
maderacounty.com





Item 3: Roll Call

Seat	Representative	Alternate
DAC	Victoria Ortiz	Self-Help
DAC	Teresa Padilla Mendoza	Leadership Council
Residential	H. Clay Daulton	Jay Quick
Residential	Jerrold Kazynski	Al Solis
Permanent Ag	Jim Maxwell	Karun Samran
Permanent Ag	Devin Aviles	James Unti
Non-Permanent Ag	Larkin Harman	Greg Hooker
Non-Permanent Ag	Bryant Elkins	Albert Guravage
Delta Mendota	Jared Samarin	Sam Lopes
Livestock	Darcy Vlot	Ben Pitman
At Large	Clay Haynes	Mike DeLaGuerra



@MADERACOUNTY
maderacounty.com





Item 4: Public Comment

The first 15 minutes of each regular session is set aside for members of the public to comment on any item within the jurisdiction of the Committee, but not appearing on the agenda. For items appearing on the agenda, the public is invited to comment at the time the item is called for consideration by the Committee. Any person addressing the Committee under public comment will be limited to a 3 minute presentation to ensure that all interested parties have an opportunity to speak.



@MADERACOUNTY
maderacounty.com





Item 5: Ambassador Reports (Committee Members)



@MADERACOUNTY
maderacounty.com



Committee Member Comments



@MADERACOUNTY
maderacounty.com





Public Comment



@MADERACOUNTY
maderacounty.com





Item 6: Director's Report (Stephanie Anagnoson)

- Madera Subbasin Status from DWR and SWRCB
- County GSA at second board meeting of the month at 10:30 a.m.
- GSA Admin Fee appeared on October tax bills
- GSA Admin Fee Appeal Process is on maderacountywater.com
- Volumetric Pumping Fees – Required Rate Study in process
- Data Management System underway
- CVP Contract Place of Use expansion
- Water Market Grant Update – December 1 at 3 p.m.
- Satellite Technology for Groundwater Monitoring – November 6 at 10 a.m.
- Recharge Studies – presentation today
- Land Easement Studies – stakeholder interviews concluded
- Prop 68 Domestic Well Inventory for the Chowchilla Subbasin
- Prop 68 Domestic Well Inventory for the Madera Subbasin
- Watershed Coordinator grant
- CV Salts
- Flood



@MADERACOUNTY
maderacounty.com



Committee Member Comments



@MADERACOUNTY
maderacounty.com





Public Comment



@MADERACOUNTY
maderacounty.com





**Item 7: Domestic Wells – CV Salts
(Christina Beckstead and Sarah Woolf)
See separate presentation**



@MADERACOUNTY
maderacounty.com



Committee Member Comments



@MADERACOUNTY
maderacounty.com





Public Comment



@MADERACOUNTY
maderacounty.com





Item 8: Recharge (Davids Engineering) See separate presentation



@MADERACOUNTY
maderacounty.com



Committee Member Comments



@MADERACOUNTY
maderacounty.com





Public Comment



@MADERACOUNTY
maderacounty.com





Item 9: Allocation Discussion and Recommendation (Mike Linden, Stephanie Anagnoson and Greg Young)



@MADERACOUNTY
maderacounty.com





Legal Takeaways for Overlying Groundwater Rights

- Our approach is to protect overlying groundwater rights
- The water right is the right to use the water (beneficially and reasonably) on the land
- An overlying water right is tied to the land
- There is no overlying groundwater right other than reasonable, beneficial use on the land.
 - It does not include the right to sell the water you would otherwise use.
 - It does not include the right to obtain credit for use on other lands.
- An allocation is not a water right and vice versa



@MADERACOUNTY
maderacounty.com





What is an allocation?

In this case, an allocation is

- a water budget for agricultural water users that distributes groundwater supplies within each County GSA in the Madera, Chowchilla and Delta-Mendota Subbasins
- allowed by SGMA
- decreases over time to reach sustainability
- tied to a volumetric rate structure (that goes through a separate Prop 218 process to establish)



@MADERACOUNTY
maderacounty.com





What is a farm unit?

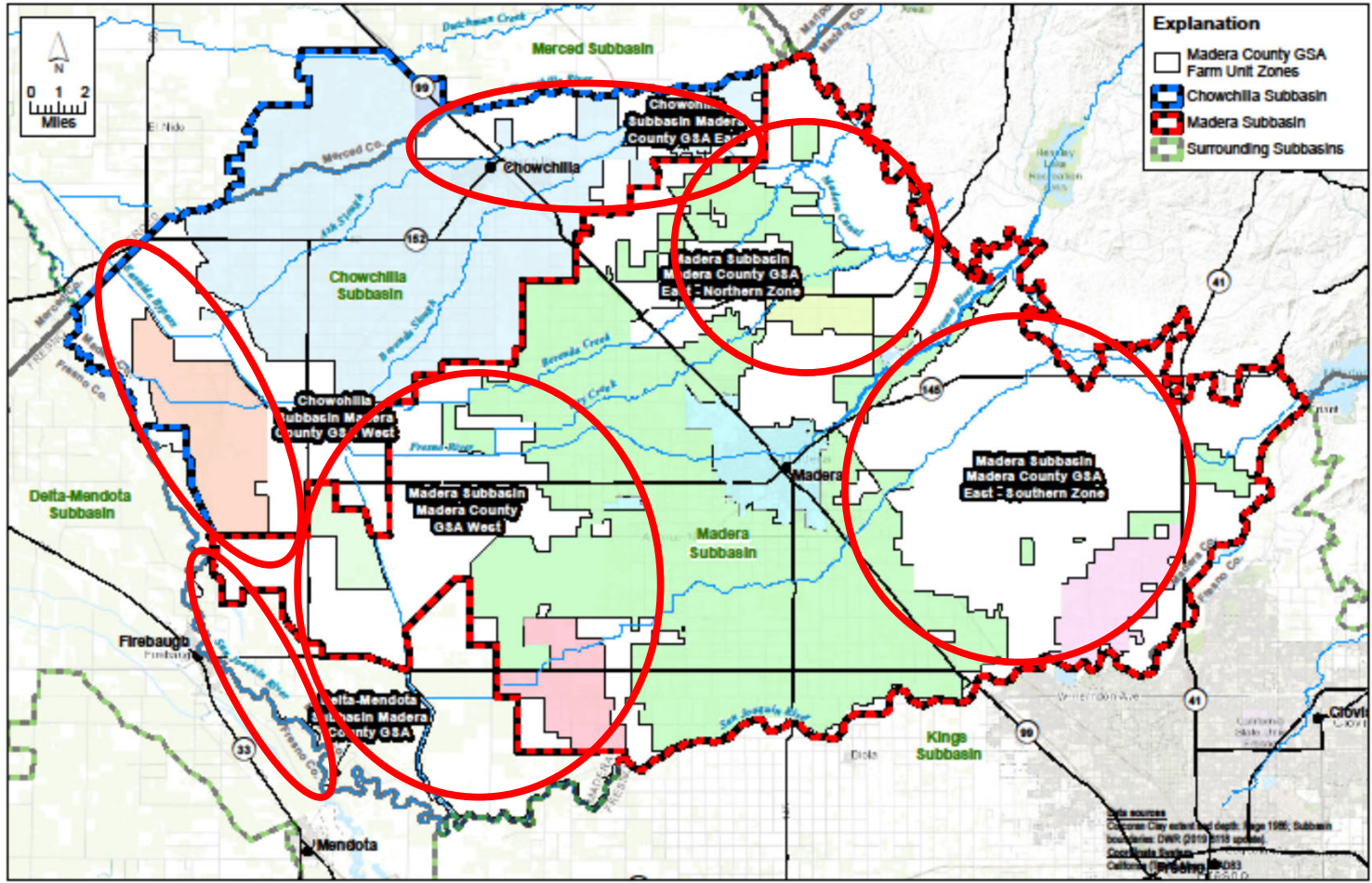
In this case, a farm unit is

- a grouping of individual agriculturally-zoned parcels
- owned by the same family or managed by the same family or organization
- allowed to share groundwater allocation, including sustainable yield and transitional water
- within a defined geographic/hydrogeologic boundary
- may have additional constraints



@MADERACOUNTY
maderacounty.com





@MADERACOUNTY
maderacounty.com



DAVIDS
A PARTNER IN PROGRESS, PROTECT



Luhderff & Scalapini
Providing Solutions

FIGURE 1

Madera County GSAs Farm Unit Zones

Madera Subbasin
Groundwater Sustainability Plan



What types of water exist in the allocation?

Sustainable Yield (SY) Water (Volumetric)

Water that can be opted-in for access

Ability to access a market (if developed)

Has fees associated with it

Transitional Water (TW)

Distributed through Pool 1 and Pool 2

Water that can be opted-in for access

Has fees associated with it (costs more than SY)



@MADERACOUNTY
maderacounty.com





County GSAs Process

November-December 2020

County offers access to Sustainable Yield (SY)

Opportunity to opt in every five years with ability to pay back fees

2021

Offers ability to pump SY in that particular year

Offers Transitional Water (TW) – Pool 1

Offers Transitional Water (TW) – Pool 2

Evaluates grower use of allocation; sends bill to growers



@MADERACOUNTY
maderacounty.com





County GSA Grower Process

November-December 2020

Chooses to opt in for Sustainable Yield (or not)

Attends SEBAL training

2021

Identifies Farm Unit through on-line portal

Opts in to pump Sustainable Yield in that particular year

Opts in for Transitional Water (TW) – Pool 1 and Pool 2

Tracks consumption against allocation through on-line portal

Pays bill and continues to farm



@MADERACOUNTY
maderacounty.com





Remaining Questions

Is there a limit on amount of acres of “currently unirrigated” agriculture that could be grouped with irrigated agriculture?

Can the County GSAs promote socially disadvantaged farming unit cooperatives?

Is there a limit on amount of acres of “never-irrigated” agriculture that could be grouped with irrigated agriculture?

What contracts need to be created?

- Opt-in for sustainable yield access

- Opt-in for sustainable yield water

- Opt-in for transitional water – pool 1, pool 2



@MADERACOUNTY
maderacounty.com



Committee Member Comments



@MADERACOUNTY
maderacounty.com





Public Comment



@MADERACOUNTY
maderacounty.com





Item 10: Adjournment



@MADERACOUNTY
maderacounty.com

