



Item 8A: Allocation for Madera County GSAs

Background

Legal Framework

Water Allocation Concepts

I. Principles

II. Water Types

III. Process

IV. Farm Units and Farm Unit Zones

V. Monitoring

Recommendation

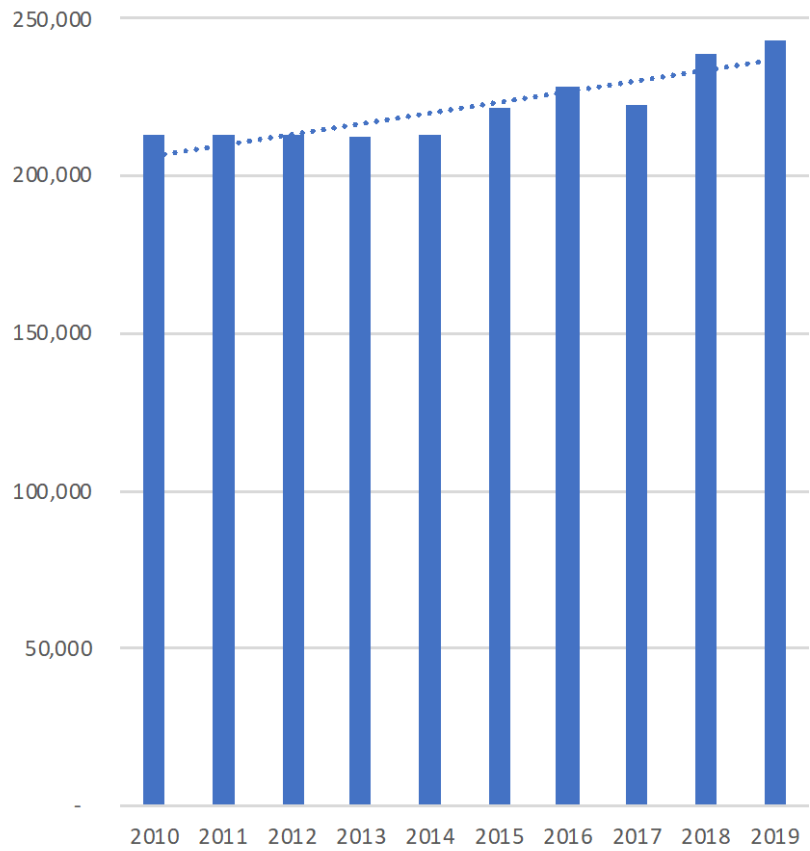


@MADERACOUNTY
maderacounty.com

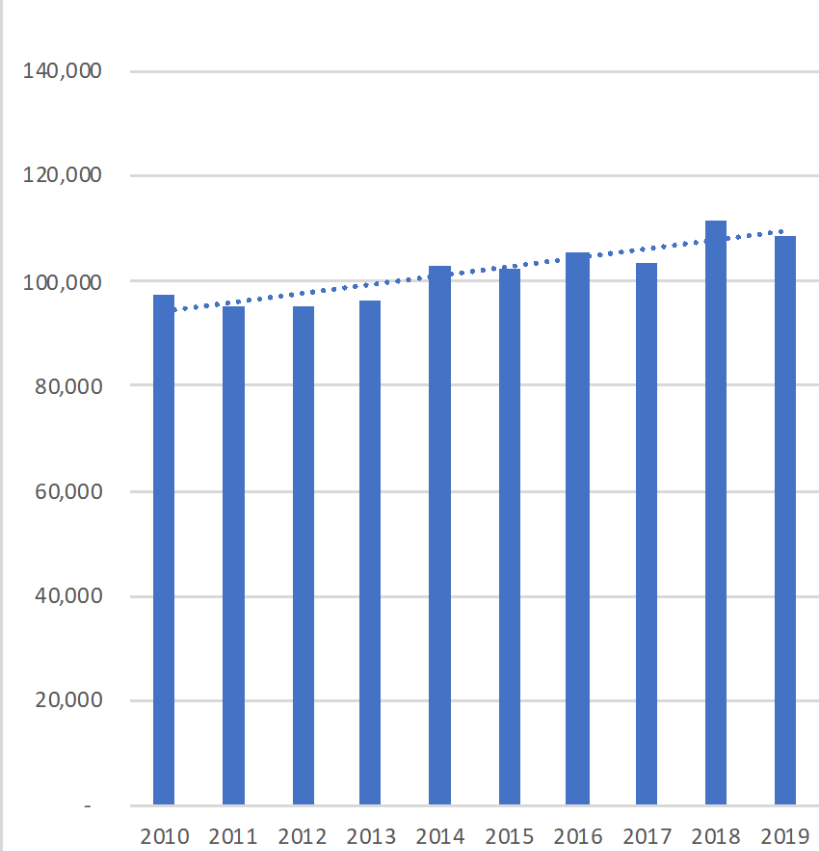


Background

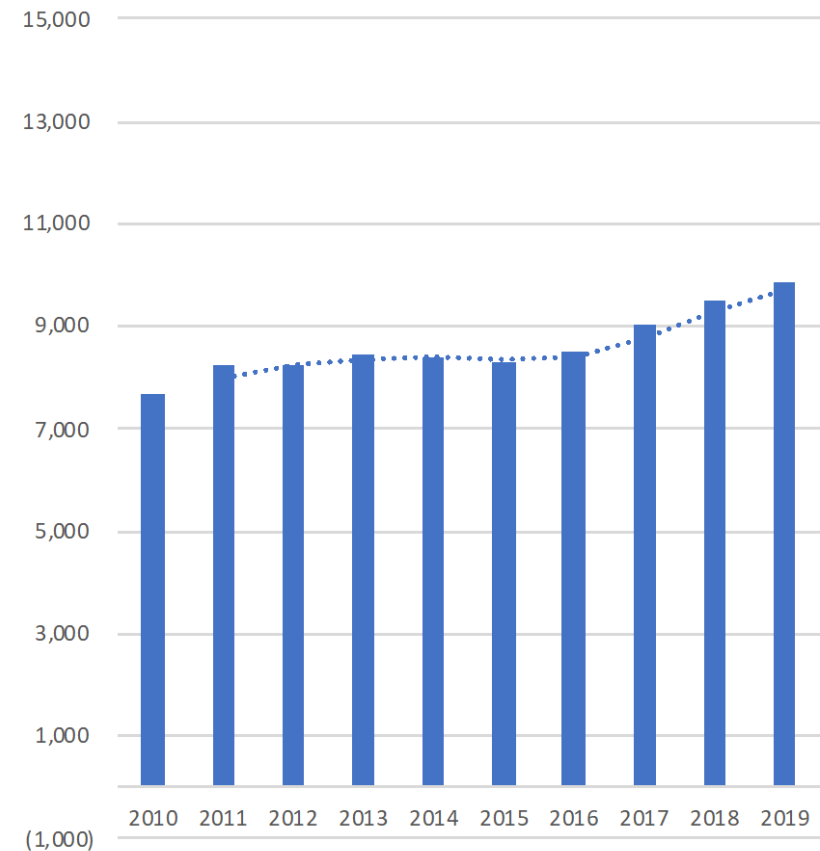
Madera County GSA - Madera Subbasin



County of Madera GSA - Chowchilla



County of Madera GSA - Delta-Mendota





Legal Framework

- An allocation system is required to be consistent with a GSA's Groundwater Sustainability Plan (GSP)
- A GSP is required to contain components related to the avoidance of “undesirable results,” which include:
 - Chronic lowering of groundwater levels
 - Reduction of groundwater storage
 - Land subsidence
 - Water quality degradation
- Therefore, any allocation system implemented by a GSA must take into consideration the necessity of avoiding undesirable results.



@MADERACOUNTY
maderacounty.com





I. Principles

- a. Certainty
- b. Domestic Water Protection (Equitable Access to Safe Drinking Water)
- c. Fairness and Equity
- d. Flexibility
- e. Overlying Groundwater Rights Protection
- f. Simplicity
- g. Preserving the Economic Stability of Madera County and its Citizens



@MADERACOUNTY
maderacounty.com





II. Water Types

2. The allocation approach will include access to groundwater categorized classified using two designations:
 - a. A “sustainable yield” of native groundwater, that is, water that naturally exists in the subbasins from seepage and percolation; and
 - b. “Transitional water” that is continued overdraft of the subbasins, but will incrementally decrease during the GSP implementation period.



@MADERACOUNTY
maderacounty.com





III. Process

3. The allocation approach will be a process whereby sustainable yield access is offered to overlying groundwater rights users every five years, and whereby participation will include:
 - a. The opportunity to pump a designated quantity of sustainable yield within each year,
 - b. The opportunity to pump a designated quantity of transitional water within each year, and
 - c. The requirement to pay for pumped quantities of sustainable yield and transition water based upon a volumetric rate structure that is to be established.



@MADERACOUNTY
maderacounty.com





IV. Farm Unit Zones

4. The allocation approach will allow the County GSAs' per-acre (parcel-based) allocations of sustainable yield and transition water to be shared within designated "farm units" that would meet criteria defined by the County GSAs, so as to allow flexibility and reflect real-world farming conditions in which resources are shared among commonly operated lands.



@MADERACOUNTY
maderacounty.com





V. Monitoring

5. The allocation approach will include monitoring of evapotranspiration (“ET”) and the ET of applied water (“ETAW”) for designated “farm units” and the comparison of ETAW to assigned allocations, where such services will be provided through a contract between the County and a third party vendor, with quality assurance and quality control performed by multiple parties.



@MADERACOUNTY
maderacounty.com





Staff Recommendation

- Adopt an allocation approach



@MADERACOUNTY
maderacounty.com





Farm Unit Zones

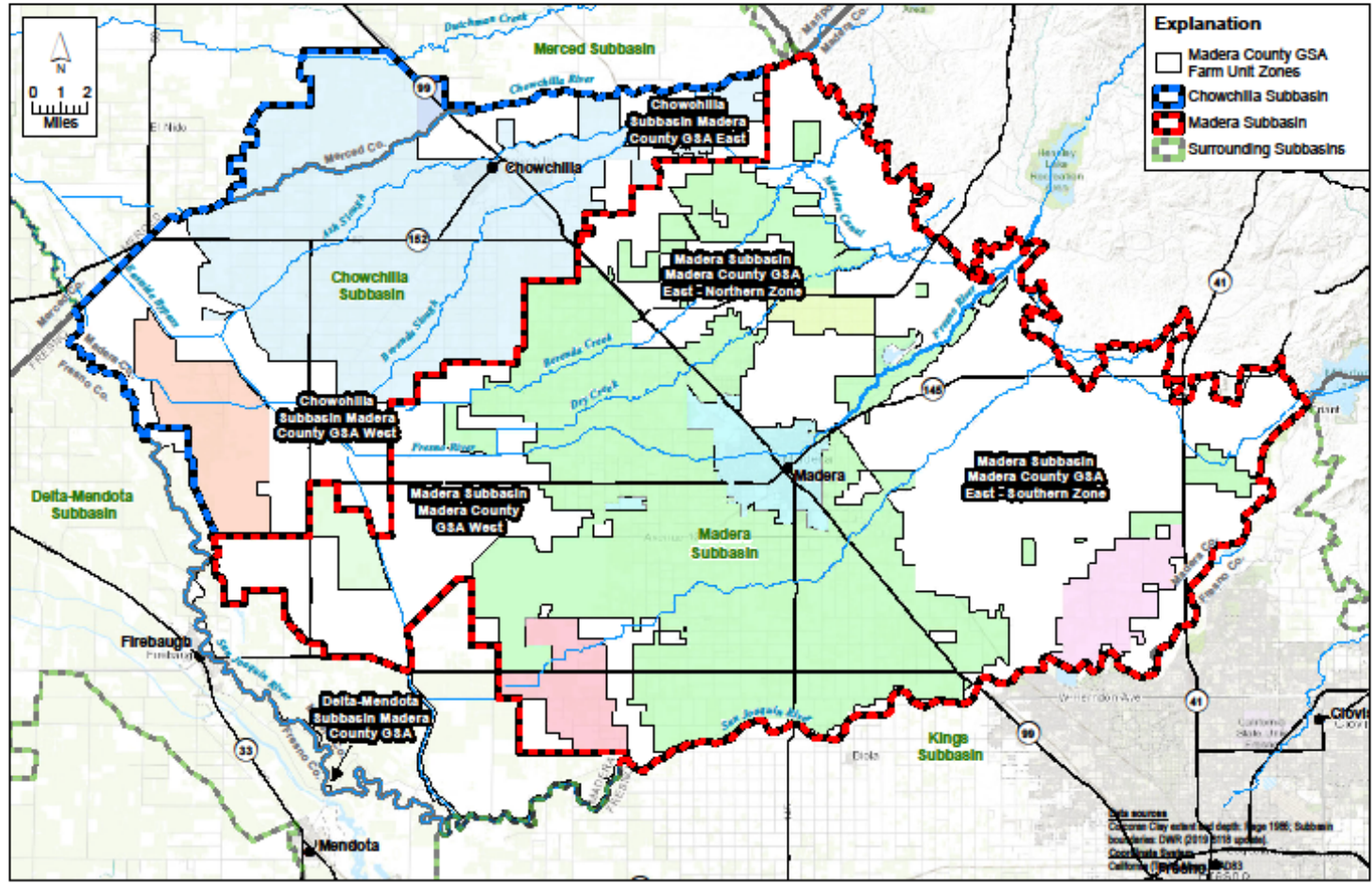


FIGURE 1

Madera County GSAs Farm Unit Zones

Madera Subbasin
Groundwater Sustainability Plan



@MADERACOUNTY
maderacounty.com

