

# Outline for County GSAs Update May 11, 2021

- Outreach
- Follow-up from 4/13/2021
  - SALC costs/benefits
  - New acres in production post- SGMA
  - Elements of Rates



@MADERACOUNTY  
maderacounty.com





## Outreach for April

- April 6, 2021 – Land Repurposing Webinar (statewide)
- April 8, 2021 – County GSAs Office Hours on land repurposing and recharge
- April 13, 2021 – County GSAs Board Meeting
- April 19, 2021 – Workshop with FB and MAWA on Allocations and Farm Units
- April 21, 2021 – MAWA and Cattlemen's Association Meeting
- April 22, 2021 – County GSAs Office Hours on groundwater markets



@MADERACOUNTY  
maderacounty.com





## SALC: Overview

- Currently irrigated lands
  - Can receive Sustainable Yield and Transitional Water
  - SALC would acquire Sustainable Yield and Transitional Water
- Non-irrigated lands
  - Can opt-in Sustainable Yield
  - Are non-irrigated lands able to participate in SALC?



@MADERACOUNTY  
maderacounty.com





## SALC: Options

SALC options presented on April 13, 2021 based on a percent of total demand management target included:

1. 25 percent
  - \$35 - \$75/ac annual cost (\$7.1M total)
  - 30 TAF per year
2. 50 percent
  - \$70 - \$230/ac annual cost (\$16.7M total)
  - 60 TAF per year
3. 100 percent
  - \$190 - \$755/ac annual cost (\$38M total)
  - 120 TAF per year

Note: this includes Madera, Chowchilla, and Delta Mendota Subbasin combined totals



@MADERACOUNTY  
maderacounty.com





## Considering SALC Options: Costs and Benefits

### Costs

Reduced farming on enrolled lands  
Regional impacts of reduced farming  
Per acre payments/assessments

### Benefits

Continued farming on non-enrolled lands  
Avoided costs of other projects and  
management actions  
Avoided domestic well impacts  
Reduced subsidence



@MADERACOUNTY  
maderacounty.com





## Considering SALC Options

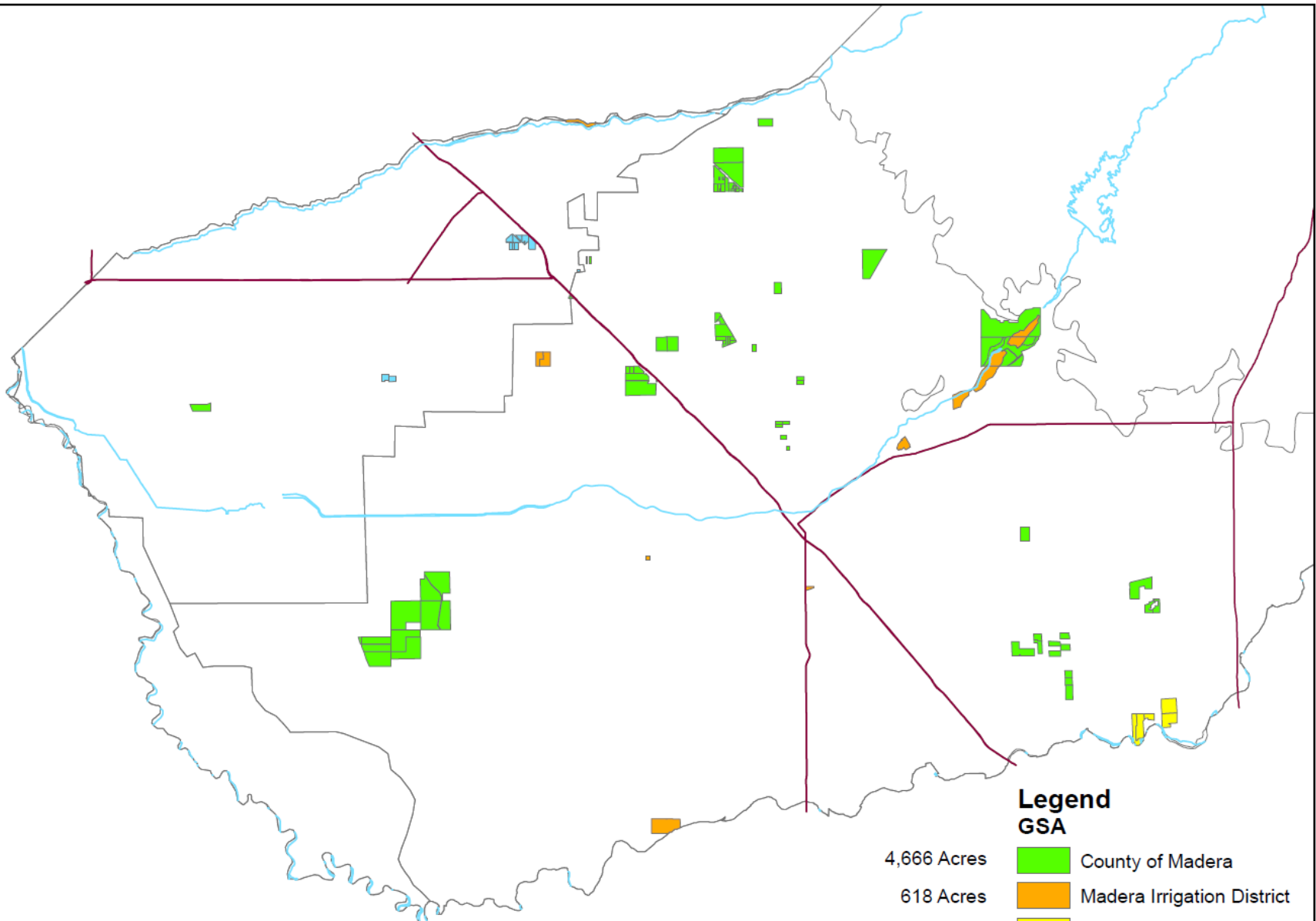
- Considerations
  - Benefits increase with the scale of the program
  - Program would be coordinated with other projects and management actions
  - Program would be evaluated annually and managed adaptively
- Recommendation
  - Pursue Option 2 with annual monitoring and adjustments to ensure program achieves desired outcomes







@MADERACOUNTY  
maderacounty.com



# Converted Acreage Since 2015



## Legend GSA

- 4,666 Acres  County of Madera
- 618 Acres  Madera Irrigation District
- 393 Acres  Root Creek Water District
- 255 Acres  Chowchilla Water District
- 5,932 Acres

