

CHOWCHILLA



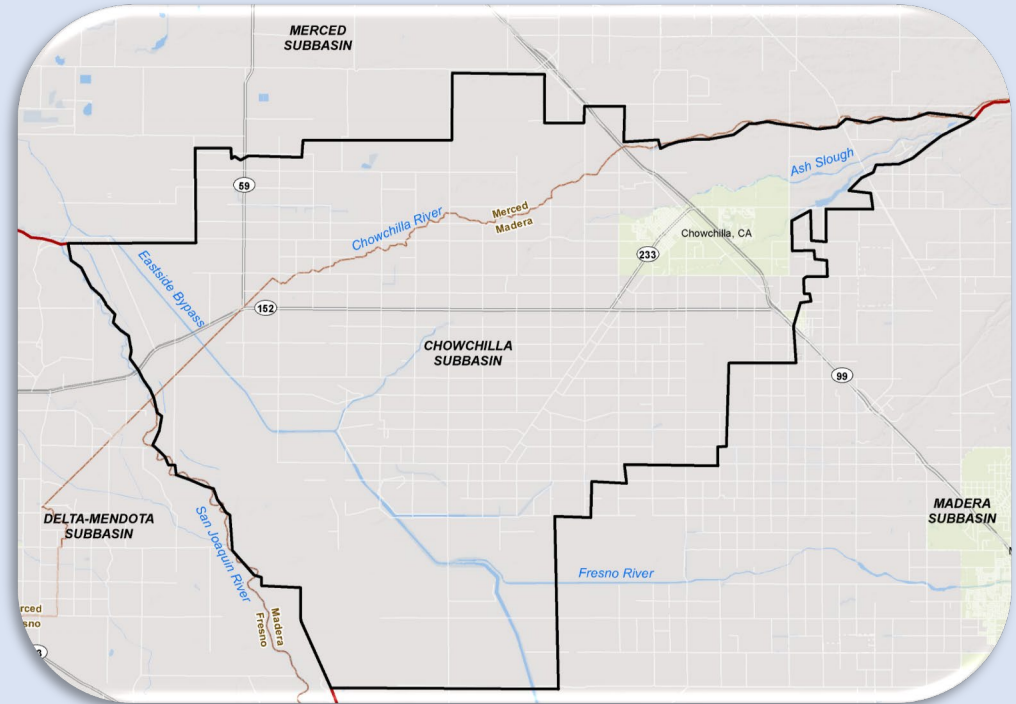
MANAGEMENT ZONE

NITRATE CONTROL PROGRAM

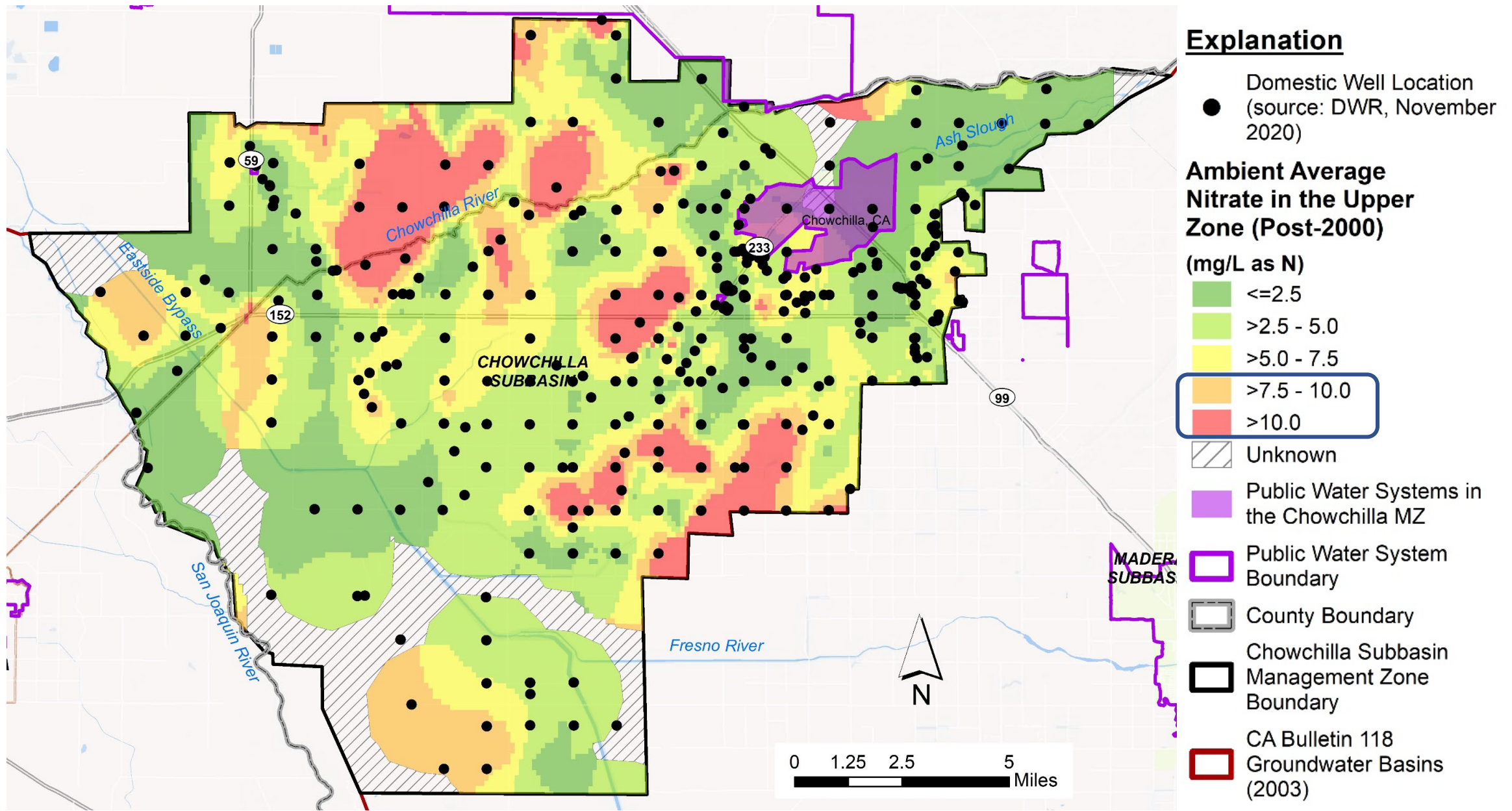


What is the Nitrate Control Program?

- A State regulation to resolve groundwater affected by nitrate.
- Three goals:
 1. Provide safe drinking water supplies
 2. Reduce Nitrate impacts to water supplies
 3. Restore groundwater quality where reasonable, feasible, and practicable.

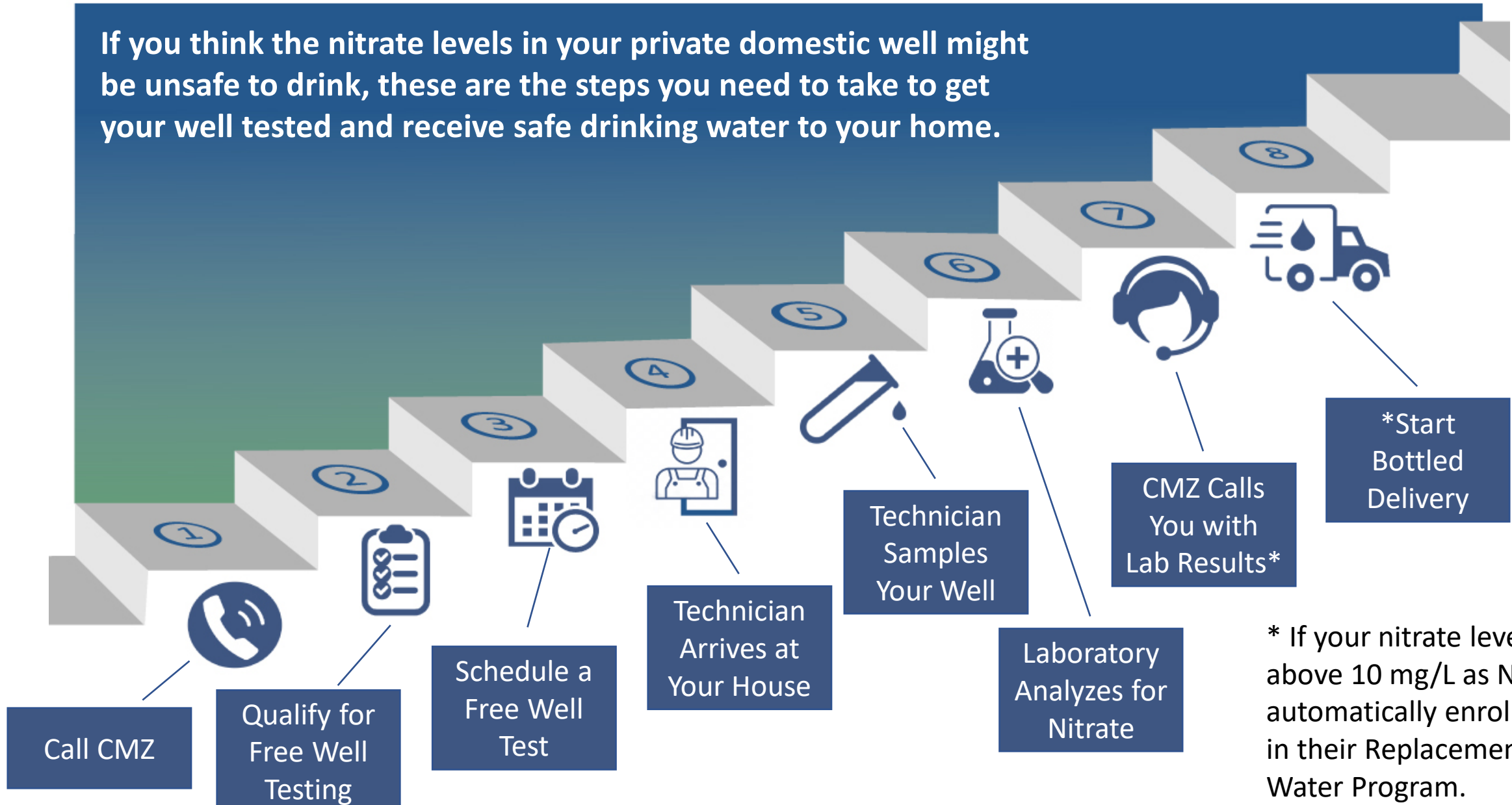


Where do you get your drinking water?



Steps for Well Testing and Bottled Water

If you think the nitrate levels in your private domestic well might be unsafe to drink, these are the steps you need to take to get your well tested and receive safe drinking water to your home.



* If your nitrate level is above 10 mg/L as N, CMZ automatically enrolls you in their Replacement Water Program.

Free Replacement Water Program

1. If your well test results indicate that nitrate levels are unsafe for drinking, the MZ immediately enrolls you in the MZ's replacement water program.
2. The MZ will connect you, the resident, with the MZ's replacement water provider (currently bottled water service) to establish:
 - Delivery contract (if needed)
 - Delivery schedule
 - Delivery amount
3. Start receiving safe drinking water



Contact Us

- Email: chowchilladrinkingwater@gmail.com
- Phone: **559-373-7399**
- Christina Beckstead
Madera County Farm Bureau
cbeckstead@maderafb.com
(559)674-8871
- Sarah Woolf
sarahwoolf@me.com
559-341-0174
- Website (for past public meetings and other documents): <https://www.maderacountywater.com/cv-salts/>
- Questions about your well: Contact Madera County Environmental Health, Merced County Environmental Health, or Self Help Enterprises
(<https://www.selfhelpenterprises.org/programs/emergency-services/>)

