

**BEFORE THE
BOARD OF DIRECTORS FOR THE
COUNTY OF MADERA GROUNDWATER
SUSTAINABILITY AGENCY**

In the Matter of)	Resolution No.: <u>2020 - 166</u>
)	
SUSTAINABLE GROUNDWATER)	RESOLUTION ADOPTING A
MANAGEMENT ACT)	GROUNDWATER ALLOCATION
)	APPROACH FOR THE GROUNDWATER
)	SUSTAINABILITY PLAN
_____)	

WHEREAS, the County of Madera (“County”) is a Groundwater Sustainability Agency (“GSA”) under the Sustainable Groundwater Management Act (“SGMA”) for areas within the Madera, Chowchilla, and Delta-Mendota subbasins (collectively the “subbasins”) that are not otherwise covered by another GSA, and in this capacity the County Board of Supervisors sits as the ex officio Board of Directors (“Board”) for the three County GSAs; and

WHEREAS, the Advisory Committee to the County GSAs (“Advisory Committee”) is a committee that was created by the Board for the purpose of reviewing and evaluating matters related to SGMA compliance, including the Groundwater Sustainability Plan (“GSP”) for each subbasin, and making recommendations to the Board as desired or directed; and

WHEREAS, the County GSAs have adopted GSPs that describe a sustainable yield of approximately 0.5 acre-feet per acre for the subbasins;

WHEREAS, consumptive use of groundwater within the County GSA boundaries exceeds the available sustainable yield, and the GSPs identified demand reduction as a critical management action to achieve SGMA objectives;

WHEREAS, the County GSAs have analyzed groundwater use over historical periods to the present, and have noticed a significant increase in water demand caused by recent

plantings of permanent crops into previously unplanted lands and the replacement of lower-water using plants with higher-water using plants, thus further exacerbating the challenges the GSPs seek to address with respect to achieving sustainability within the subbasins; and

WHEREAS, after discussions for more than a year, the key components of an allocation approach are ready for implementation; and

WHEREAS, the Advisory Committee has been a significant participant and contributor to these discussions, and recognizes the importance of moving forward with demand reduction initiatives, of which an allocation approach is critical element; and

WHEREAS, on November 12, 2020, at a duly noticed meeting, the Advisory Committee, by a 9-1 majority vote (one absent), adopted a resolution recommending an approach to allocating groundwater (the “allocation approach”) in the subbasins, as set forth below.

THEREFORE, BE IT RESOLVED by the Board of Directors that the County GSAs’ allocation approach in the subbasins be adopted in accordance with the following:

1. The key principles of the allocation approach for the County GSAs, as recognized by SGMA, are described below:
 - a. Certainty
 - b. Domestic Water Protection (Equitable Access to Safe Drinking Water)
 - c. Fairness and Equity
 - d. Flexibility
 - e. Overlying Groundwater Rights Protection
 - f. Simplicity
 - g. Preserving the Economic Stability of Madera County and its Citizens

2. The allocation approach will include access to groundwater categorized classified using two designations:

- a. A “sustainable yield” of native groundwater, that is, water that naturally exists in the subbasins from seepage and percolation; and
- b. “Transitional water” that is continued overdraft of the subbasins but will incrementally decrease during the GSP implementation period. Initial transitional water is based on GSPs is in **Exhibit A**.

3. The allocation approach will be a process whereby sustainable yield access is offered to overlying groundwater rights users every five years, and whereby participation will include (a) the opportunity to pump a designated quantity of sustainable yield within each year, (b) the opportunity to pump a designated quantity of transitional water within each year, and (c) the requirement to pay for pumped quantities of sustainable yield and transition water based upon a volumetric rate structure that is to be established.

4. The allocation approach will allow the County GSAs’ per-acre (parcel-based) allocations of sustainable yield and transition water to be shared within designated “farm units” per **Exhibit B**, so as to allow flexibility and reflect real-world farming conditions in which resources are shared among commonly operated or managed lands.

5. The allocation approach will include monitoring of evapotranspiration (“ET”) and the ET of applied water (“ETAW”) for designated “farm units” and the comparison of ETAW to assigned allocations, where such services will be provided through a contract between the County and third party experts with multiple parties performing quality assurance and quality control.

//

* * * * *

The foregoing Resolution was adopted this 15TH day of December, 2020, by

the following vote:



Director Frazier voted:	<u>yes</u>
Director Rogers voted:	<u>yes</u>
Director Poythress voted:	<u>yes</u>
Director Rodriguez voted:	<u>yes</u>
Director Wheeler voted:	<u>yes</u>



 David Rogers
 Chairman, Board of Directors

ATTEST:



 Clerk, Board of Directors

Approved as to Legal Form:
COUNTY COUNSEL

Michael R.
Linden
 By _____

Digitally signed by: Michael R.
 Linden
 DN: CN = Michael R. Linden email =
 mjinden@lozanosmith.com C = US
 Date: 2020.11.19 09:06:55 -08'00'

Exhibit A
Annual Available Sustainable Yield and Transition Water

Year	Madera County GSAs					
	Madera Subbasin		Chowchilla Subbasin		Delta Mendota Subbasin	
	SY	TW	SY	TW	SY	TW
2020	90,000	101,000	22,500	60,500	1,500	2,000
2021	90,000	98,980	22,500	59,290	1,500	1,960
2022	90,000	96,960	22,500	58,080	1,500	1,920
2023	90,000	94,940	22,500	56,870	1,500	1,880
2024	90,000	92,920	22,500	55,660	1,500	1,840
2025	90,000	90,900	22,500	54,450	1,500	1,800

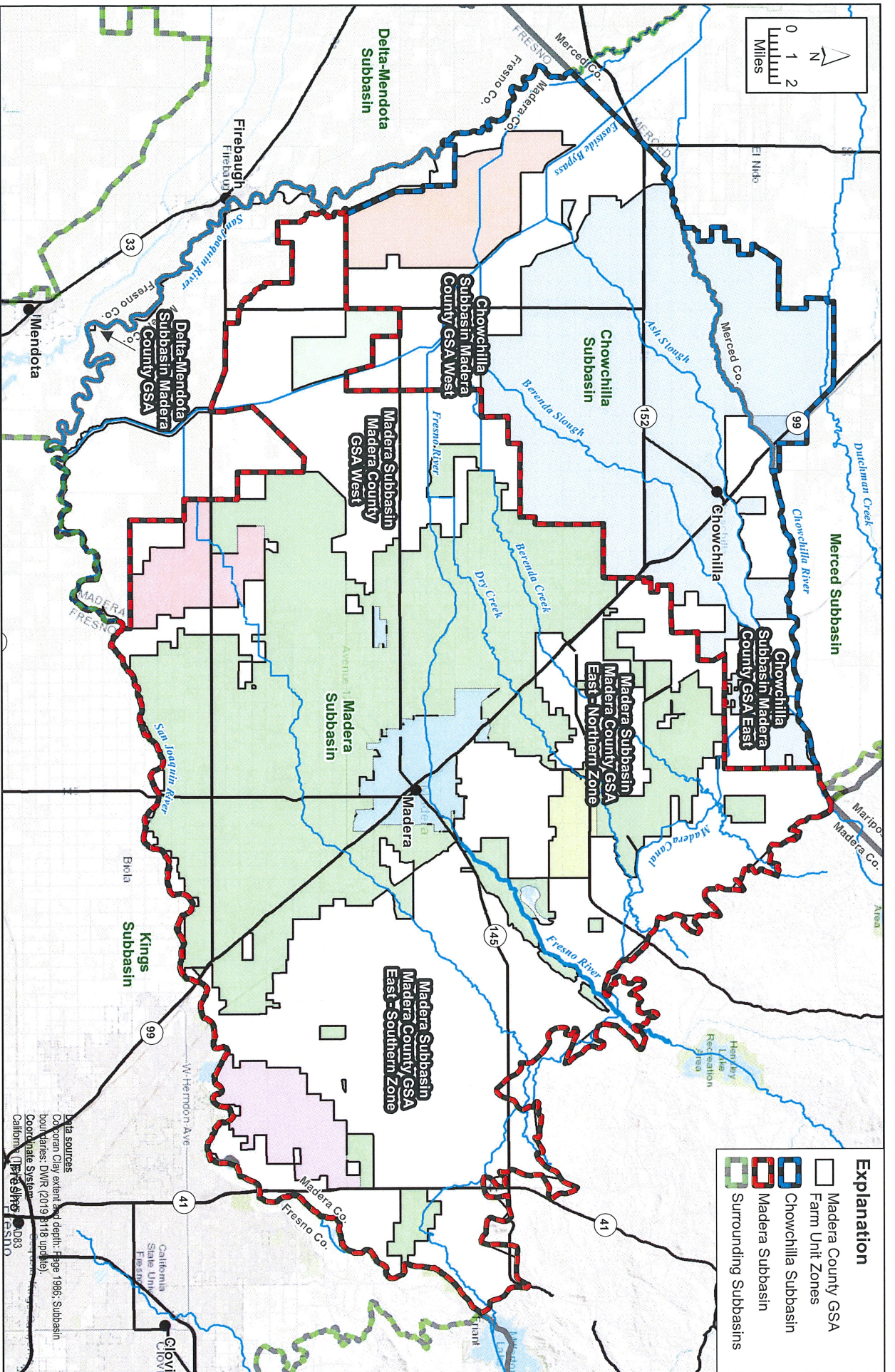


FIGURE 1

Madera County GSAs Farm Unit Zones

Madera Subbasin
 Groundwater Sustainability Plan