



Madera County GSAs

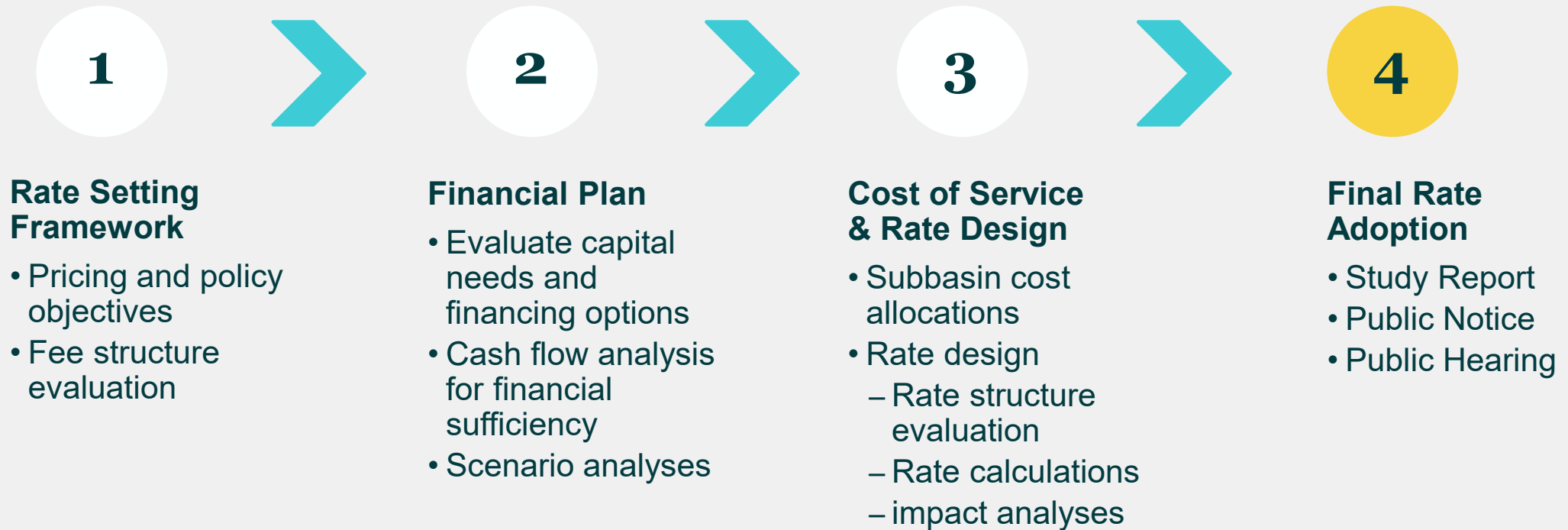
Rate Studies Public Hearing

June 21, 2022

Timeline of SGMA and GSAs Formation



Rate Study Process



Grant Funding

Prop 1 Stressed Basins

- \$500,000 for Madera and Chowchilla Subbasins

Prop 1 GSP Development

- \$5,000,000 for Madera and Chowchilla Subbasins

Prop 68 Planning

- \$900,000 for Madera and Chowchilla Subbasins

Prop 68 Implementation

- \$8,400,000 for Madera and Chowchilla Subbasins

SALC

- \$200,000 for Madera County

WaterSMART

- \$200,000 for Madera County

Prop 68 Recharge

- Another \$3,500,000 potentially in process

Five Year Rate Schedules (\$/enrolled acre)

Five-Year Averaged	FYE 2023	FYE 2024	FYE 2025	FYE 2026	FYE 2027
Madera	\$246	\$246	\$246	\$246	\$246
Chowchilla	\$203	\$203	\$203	\$203	\$203
Delta-Mendota	\$138	\$138	\$138	\$138	\$138

The annual rates in each of the five years are averaged or “smoothed” over the rate-setting period

SGMA/GSP Implementation Elsewhere

Lower Tule River Water District

- Admin costs are covered internally by the water district
- Transition Water is \$90/AF for tier 1 allocation and \$180/AF for tier 2 allocation

Tri-County Groundwater Authority GSA

- Admin Costs are \$4/AC and \$10/AF;
- Transition Water is \$125/AF for tier 1 allocation and \$500/AF for tier 2 allocation

Eastern Tule GSA

- Admin costs are \$5.12/AC
- Transition Water is \$245/AF

2021/2022 Workshops & Outreach

Groundwater Recharge

Workshops
February 4, 2021
May 3, 2021

**Madera County GSAs
Hybrid Workshop**
June 16, 2021

Sites Reservoir

**Presentation at GSA
Update at Board of
Supervisors**
November 2, 2021

Rate Study

Board of Supervisors Update
August 17, 2021

**Public Workshop on
Preliminary Rates**
November 30, 2021

**Board of Supervisors
Preliminary Rates**
December 9, 2021

Board of Supervisors Updates
February 8, 2022
March 1, 2022
March 9, 2022
March 29, 2022

**Public Workshop on
Revised Rates**
February 25, 2022

**Board of Supervisors
Rate Authorization**
April 12, 2022

**Madera Ag Water Association
(MAWA) Rate Workshops**
May 19, 2022
May 20, 2022

Public Workshop on Final Rates
June 10, 2022

Domestic Well Mitigation

**Madera County
GSAs Workshop**
June 16, 2021

**Regional Water
Management Group**
June 28, 2021
September 27, 2021

Sustainable Agriculture Land Conservation

Public Workshops
January 14, 2021
March 23, 2021
June 16, 2021

Mailer and Notice

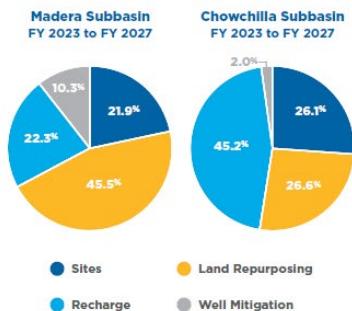
The Costs of Ensuring Our Water Future

The projects we described will cost the GSAs approximately \$220M Madera / \$75M Chowchilla to implement over the next 10 years. This considerable investment accounts for subbasin cost shares with other GSAs, private contributions, and public grant estimates. The proposed fees include all, and only, the projects included in the Groundwater Sustainability Plans (GSPs).

Proposed Rates

We have developed a rate proposal for groundwater users in each subbasin to pay for these investments. The proposed rates cover only the costs of the projects that benefit each subbasin directly. The funds generated from the rates can only be used for these projects and cannot be utilized by, or transferred to, any other County of Madera Department.

How Is our Investment split between the different projects?



County of Madera
Groundwater Sustainability Agency
200 W. 4th Street
Madera, CA. 93637

Proposition 218 Notification

Notice to Property Owners of Public Hearing on Groundwater Fees Pursuant to the Sustainable Groundwater Management Act

County of Madera Groundwater Sustainability Agency - Madera Subbasin

Hearing Date & Time: June 21, 2022 at 10:30 AM or as soon thereafter as possible

Hearing Location: Board of Supervisors Chambers, 200 W. 4th Street, Madera, CA 93637



Five-Year Rate Schedules (\$/Enrolled Acre*)

Subbasin	FYE 2023	FYE 2024	FYE 2025	FYE 2026	FYE 2027
Madera	\$246	\$246	\$246	\$246	\$246
Chowchilla	\$203	\$203	\$203	\$203	\$203
Delta-Mendota	\$138	\$138	\$138	\$138	\$138

*An enrolled acre is an acre within a farm unit that receives an allocation

What if the rates are not adopted?

If we aren't successful in adopting these new charges for groundwater management and service, there are some consequences to consider.

- We can't bring in new water, so we can't do recharge.
- The allocation may decrease more quickly.
- The state may intervene and we lose local control.

If you have questions, ideas, or just want to talk through this in more detail please contact County of Madera Groundwater Sustainability Agency at mcwater@maderacounty.com or 559-662-8015. For more information, visit <https://www.maderacountywater.com/county-gsa-fee-structure>.

Rate Adoption

You have recently been sent a separate Notice of Public Hearing as your property is subject to the proposed GSA rates. The notice contains detailed information including:

- The basis for the rates,
- The proposed rates in your subbasin,
- Your legal rights to protest the rates, if you so choose, and
- The time, place, and location of the Public Hearing

The Board of Directors of the County GSAs will conduct the Public Hearing on June 21, 2022 at 10:30am, or soon thereafter.

Background

In September 2014, Governor Brown signed historic groundwater legislation requiring California's medium and high-priority groundwater basins be sustainably managed by local agencies called Groundwater Sustainability Agencies ("GSAs"). This legislation, known as the Sustainable Groundwater Management Act ("SGMA"), imposes upon local agencies like cities, counties, and special districts the obligation to sustainably manage groundwater resources. Sustainability is achieved through the development and implementation of Groundwater Sustainability Plans ("GSPs"). As a high-priority basin the Madera Groundwater Subbasin ("Madera Subbasin") has submitted a GSP to the Department of Water Resources ("DWR") and is required to implement the GSP to achieve sustainability over 20 years. Implementation of the GSP requires several projects and management actions to achieve sustainability as defined within the GSP.

Why Am I Receiving This Notice?

Under the SGMA, the County of Madera Groundwater Sustainability Agency ("County GSA") may impose fees on the extraction of groundwater to fund the costs of groundwater management. You are

What Services Do the Rates Fund and Why Are the Rates Needed?

The County of Madera GSA is the agency responsible for managing groundwater for the area overlying the Madera Subbasin within its jurisdiction. The proposed rates are required to generate sufficient revenues to recover the cost of service for groundwater management, namely, funding projects and other actions for implementing the Groundwater Sustainability Plan

Outreach After Noticing

- Prop 218 Notices mailed 5/2/2022
- Trifold mailed 5/2/2022
- Trifold mailed again 5/17/2022
- In-person and Hybrid Small Group Workshops 5/19/2022 and 5/20/2022
- Webinar 6/10/2022
- Additional outreach from growers and farming organizations

Project Parameters and Details

- Authorization to notice affected parcels did not commit the County GSAs Board to project implementation details
- The Board will separately approve rules for:
 - › Land Repurposing (SALC)
 - › Domestic well mitigation
 - › Final Sites participation
 - › Recharge projects
- Adoption of the rates proposal allows project development to move forward

Rate Implementation

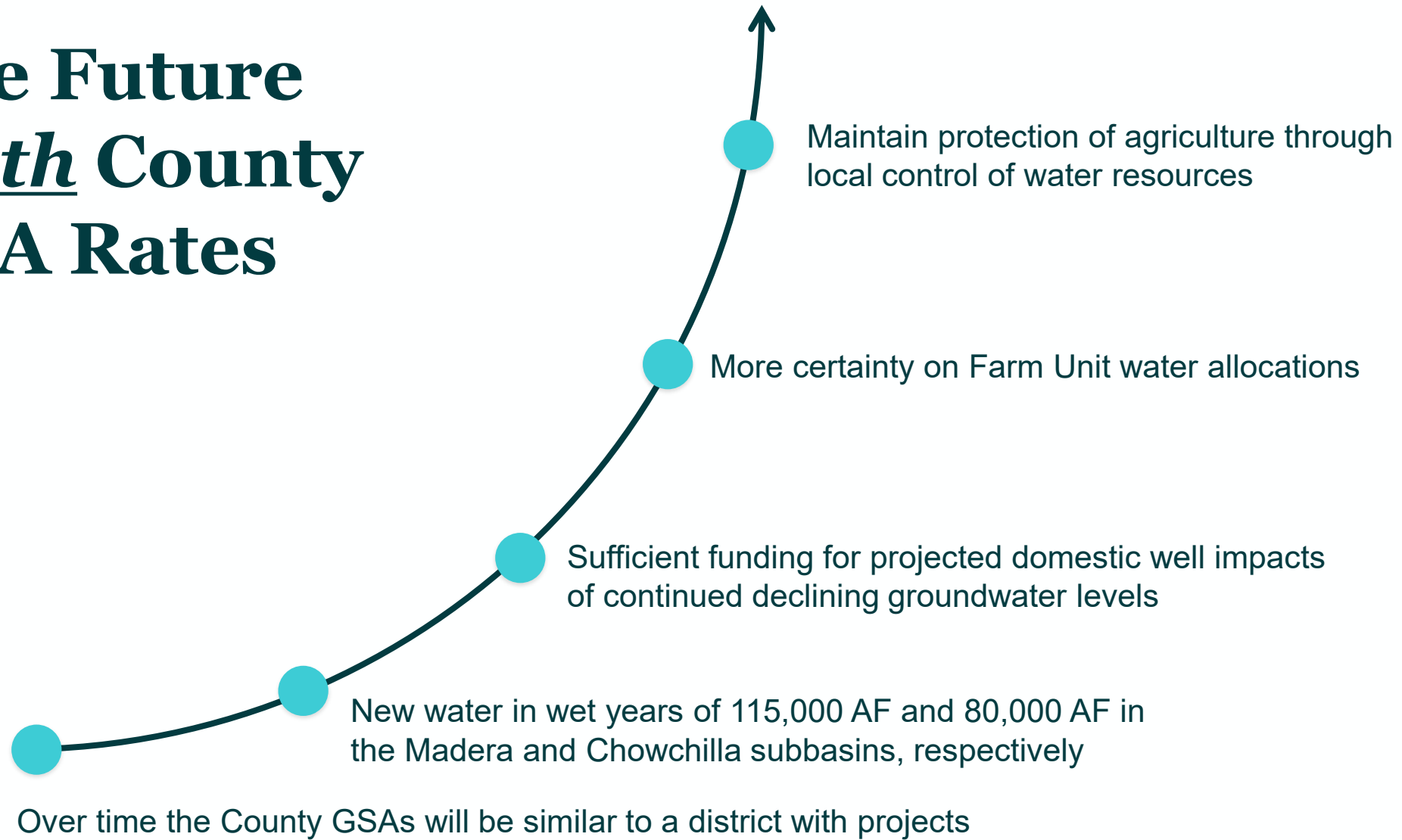
Rate adoption resolution (absent a majority protest) will include:

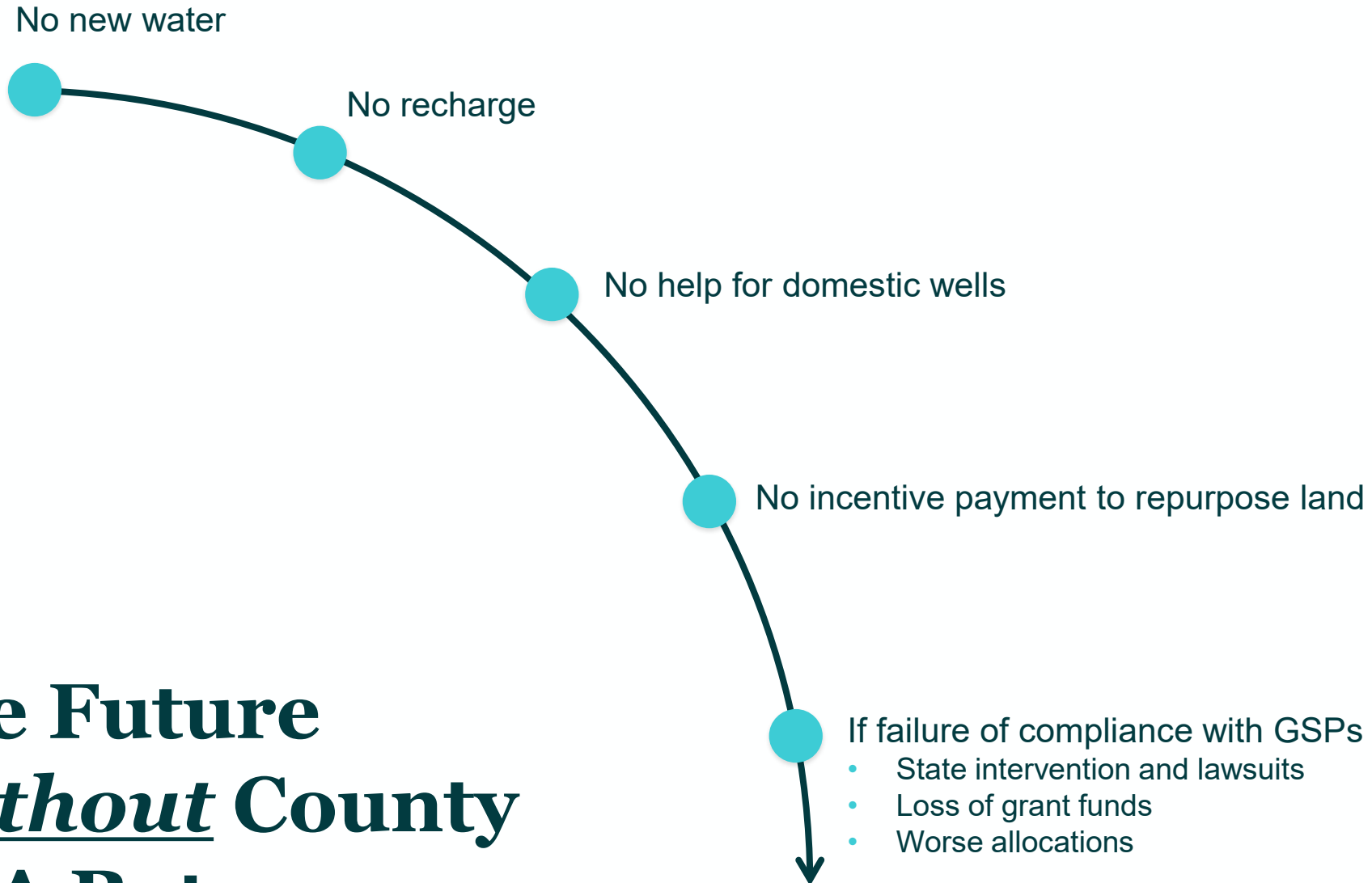
- Annual financial updates to the Board with the ability to adjust rates downward if:
 - › Projects do not progress on the current timeline
 - › Other revenues are materially larger than current estimates
 - › Project and programmatic details cause a change in future costs
- If financially prudent, the Board may elect to implement rates lower than those adopted without having to re-notice

Charges

Rates effective	The first charges	Total charges	If parcel (APN) acreage is enrolled	The charges will be split
July 1 (beginning of the County's new fiscal year)	Would show on fall property tax statements as a new "fixed charge" for the County GSA	Based on Enrolled Acres in a farm unit	It will be charged	Between fall and spring tax statements (half each)

The Future With County GSA Rates





The Future **Without County** **GSA Rates**

Allocations at 2040 with and without Rates

