



Outline

1. Status of the groundwater sustainability plans (GSPs)
2. Status of the fees expected on fall/spring property tax bills
3. 2022 Verification Project
4. Prop 68 implementation for recharge
5. Prop 68 planning for domestic well inventory
6. California Resiliency Grant
7. Multi-benefit land repurposing grant
8. Land Repurposing Program
9. Recharge Program
10. Domestic Well Mitigation Program



@MADERACOUNTY
maderacounty.com





Status of Plans

- Chowchilla Subbasin GSP – resubmitted on 7/27/2022
 - Response from DWR by end of calendar year?
- Delta-Mendota Subbasin GSPs – resubmitted on 7/19/2022
 - Response from DWR by end of calendar year?
- Madera Subbasin GSPs
 - Comment letter from DWR by end of October 2022



@MADERACOUNTY
maderacounty.com





Status of GSP Project Fees

- Fees
 - Madera Subbasin, County GSA fee of \$246/enrolled acre will appear on fall property tax bills (50%) and spring (50%)
 - Delta Mendota Subbasin, County GSA fee of \$138/enrolled acre will also appear on fall property tax bills (50%) and spring (50%)
- Penalties for 2023 are TBD today, options include
 - \$500/acre-foot over an allocation
 - \$1000/one-time fee



@MADERACOUNTY
maderacounty.com





2022 Verification Project

- 17 growers/entities participating
 - 8 different crops
 - Over 12,000 acres
 - 90 flowmeters being analyzed
- Weekly site visits being completed
- Significant data is being collected
- Cooperative effort with growers
- Importance of reviewing ETAW data on an annual timestep
- Final results ahead of 2023 irrigation season
- Irriwatch adjusting bare soil ETAW back to 1/1/2022



@MADERACOUNTY
maderacounty.com





Prop 68 Recharge

Chowchilla Subbasin, County GSA

Project 1

Status: 60% Design complete

Grant Award: \$4.2M

Anticipated Construction Start Date: January 2023

Description: The Project includes activities associated with the planning, design, permitting, and construction of four turnouts with appropriate conveyance to divert flood flows to approximately 2,900 acres of existing farmland for recharge as flood-managed aquifer recharge (Flood-Mar) and/or two dedicated groundwater recharge basins with approximately 64 acres in total area.

Project 2

Status: Grant awarded 8/31/22

Grant Award: \$3.2M

Anticipated Construction Start Date: late 2023/early 2024

Description: The Project will develop and construct approximately 2 points of diversion on the Chowchilla Bypass equipped with a 20 cfs pump and fish screen and a 24-inch magnetic flow meter, develop and construct facilities to deliver water to approximately 700 acres of existing agricultural land for Flood-MAR including approximately 5,850 linear feet of 27-inch PVC pipeline and approximately 6 grower turnouts, and development and installation of approximately one dual completion monitoring well.



@MADERACOUNTY
maderacounty.com





Prop 68 Recharge

Madera Subbasin, County GSA

Project 1

Status: 60% Design complete

Grant Award: \$4.2M

Anticipated Construction Start Date: January 2023

Description: The Project includes activities associated with the planning , design, permitting, and construction of three turnouts, rehabilitation of one existing turnout, approximately 40-acre dedicated groundwater recharge basin and all infrastructure associated with conveyance of flood flows to approximately 2,500 acres of existing farmland for recharge through land spreading, also described as flood managed aquifer recharge (Flood-MAR).

Project 2

Status: Grant yet to be awarded

Grant Award: \$542k

Anticipated Construction Start Date: Dependent on funding for construction

Description: The Project includes activities associated with the planning, design, permitting, and public outreach for future construction of one turnout with appropriate conveyance to divert flood flows from the Chowchilla Bypass to approximately 2,600 acres of existing farmland for recharge as flood-managed aquifer recharge (Flood-MAR).



@MADERACOUNTY
maderacounty.com





Prop 68 for Domestic Well Inventory

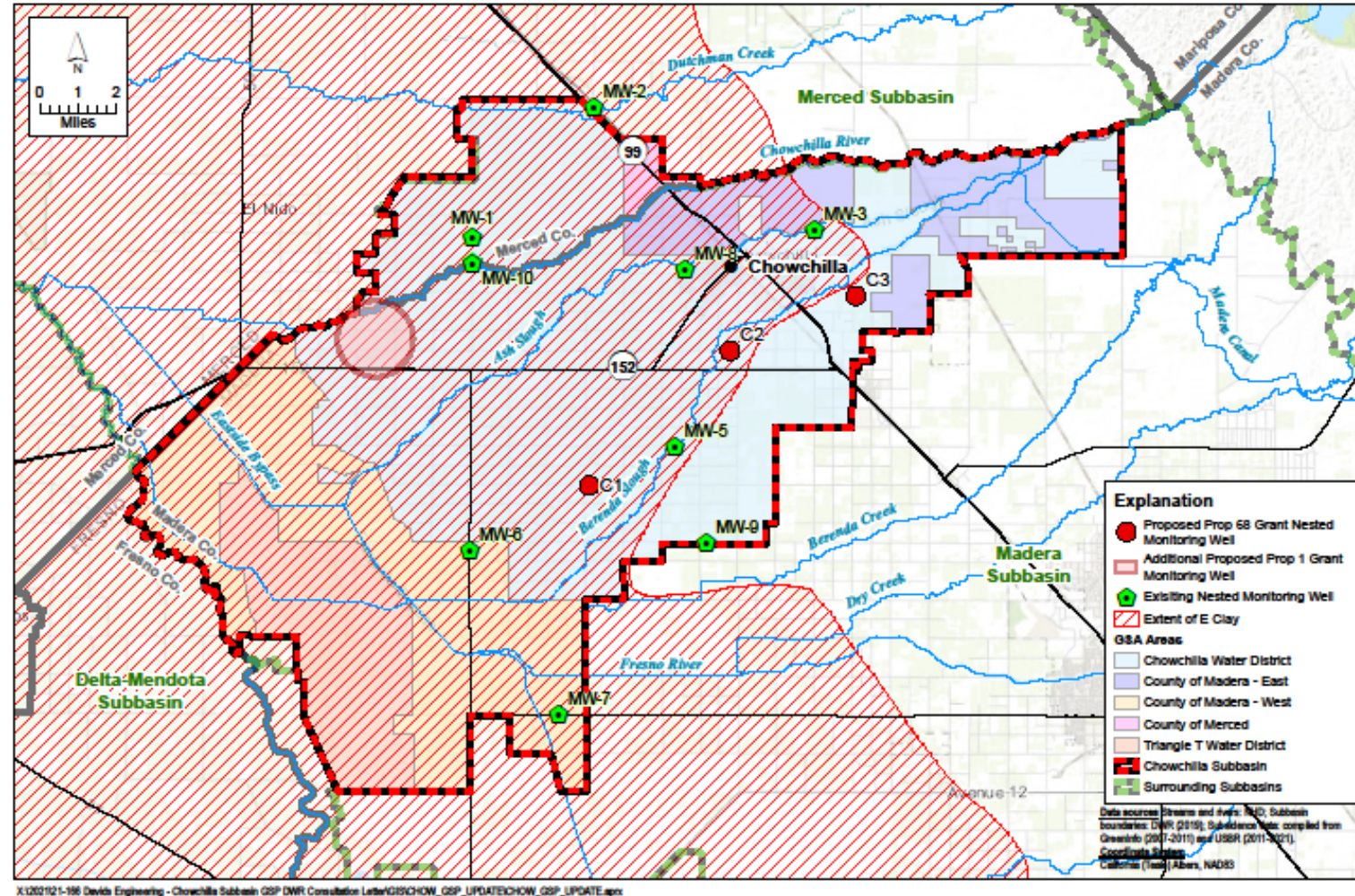


FIGURE X-X

Nested Monitoring Wells in Chowchilla Subbasin

Chowchilla Subbasin
Groundwater Sustainability Plan



DAVIDS
ENGINEERING



Luhderff & Scammon
Engineering

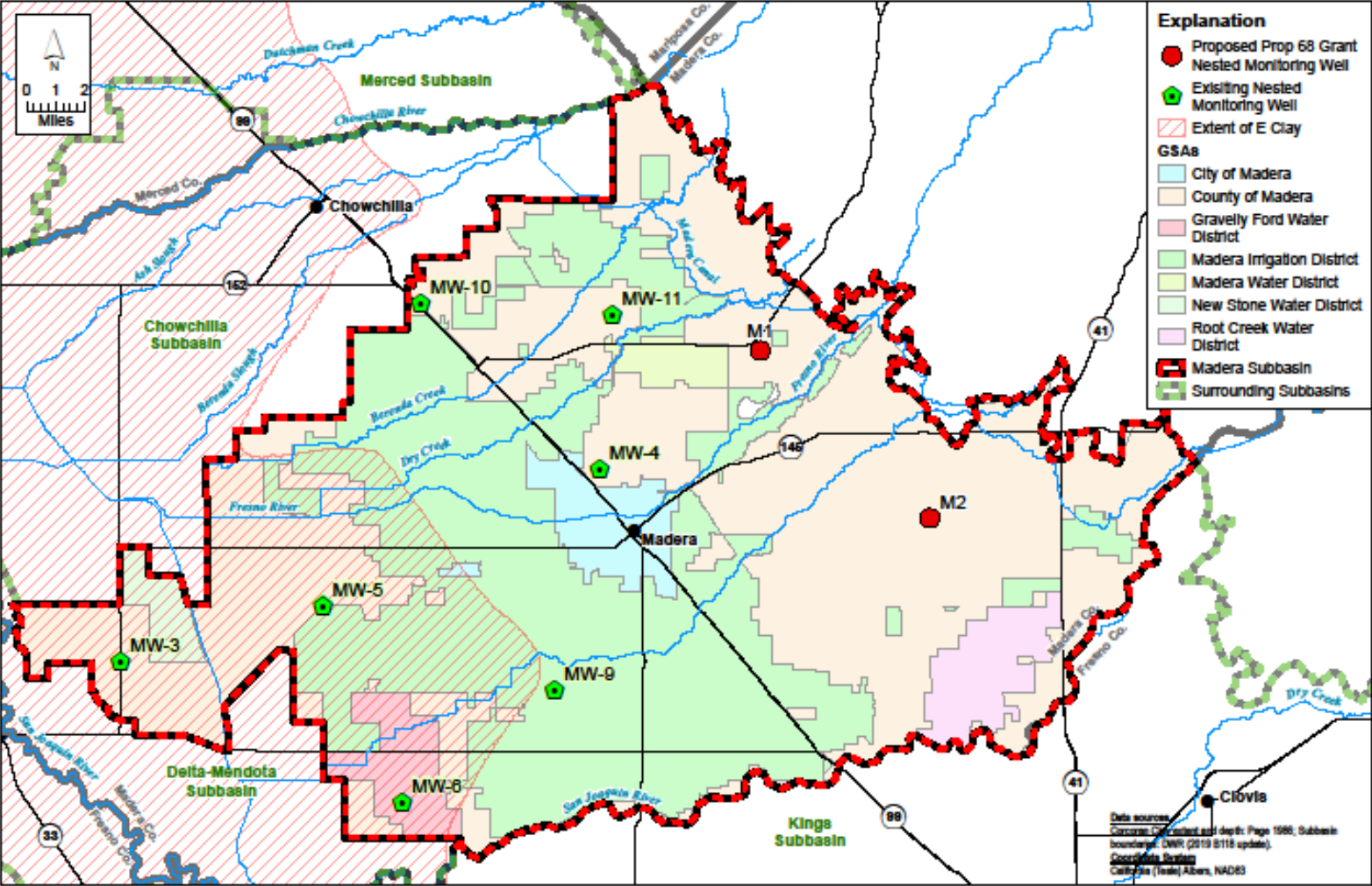


@MADERACOUNTY
maderacounty.com





Prop 68 for Domestic Well Inventory



X:\2022\22-426 Devils Engineering (22-1426) - Madera Subbasin GSP DWR Consultation Letter\GIS\MAD_GSP_UPDATE\MAD_GSP_UPDATE.aprx; WELLS_Nested_MW



DAVIDS
A PART OF THE 311 SERVICE



Luhderff & Scalapini
Engineering & Consulting

FIGURE X-X

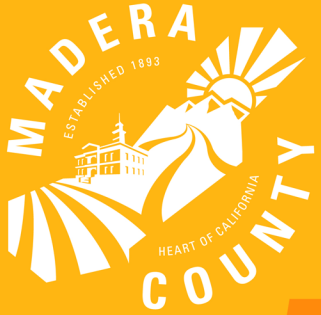
Nested Monitoring Wells in Madera Subbasin

Madera Subbasin
Groundwater Sustainability Plan



@MADERACOUNTY
maderacounty.com





Multi-Benefit Land Repurposing

- Grant Agreement is signed!
- Funds are \$10 million for land repurposing projects that result in a multi-benefit
- Funds are in all three subbasins regardless of GSA
- Requirement for plan to be developed and public input



@MADERACOUNTY
maderacounty.com





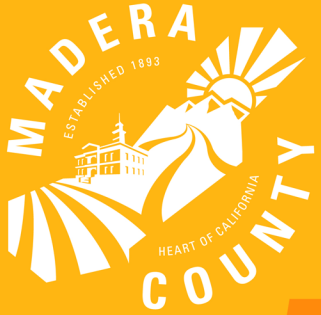
Fairmead Resilience Project

- Analyzed potential for land repurposing and recharge activities around Fairmead
- Hosted U.S. Senator Padilla's staff and board of Fairmead and Friends to talk about land repurposing and water needs
 - Around Fairmead
 - Triangle T WD



@MADERACOUNTY
maderacounty.com





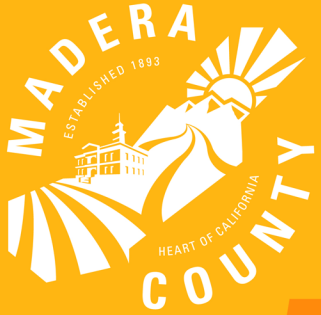
Land Repurposing Program

- Upcoming hybrid workshop on September 20, 2022 from 3 - 4:30pm on Zoom and at the Farm Bureau
- No funding source in Chowchilla to date
 - What is land repurposing?
 - How best to structure the program?
 - Financial incentives
 - Process for entering lands into the program
 - How best to structure program rules?
 - Enrollment terms/length
 - Managing enrolled lands
 - Monitoring and enforcement



@MADERACOUNTY
maderacounty.com





Recharge Program

- Rules and Draft contract between County GSA and landowners in the Madera Subbasin, County GSA will come to the board in October
 - No funding source in Chowchilla to date



@MADERACOUNTY
maderacounty.com





Domestic Well Mitigation Program

- Discussions on rules underway
- Chowchilla Subbasin
 - MOU between parties in the subbasin entered into in July 2022
 - County GSA pays approximately 50%
 - Chowchilla Water District will be the administrator
 - No funding source in Chowchilla to date
- Madera Subbasin
 - County GSA pays approximately 75%
 - Joint GSP group has discussed implementation and potential administrators



@MADERACOUNTY
maderacounty.com

