

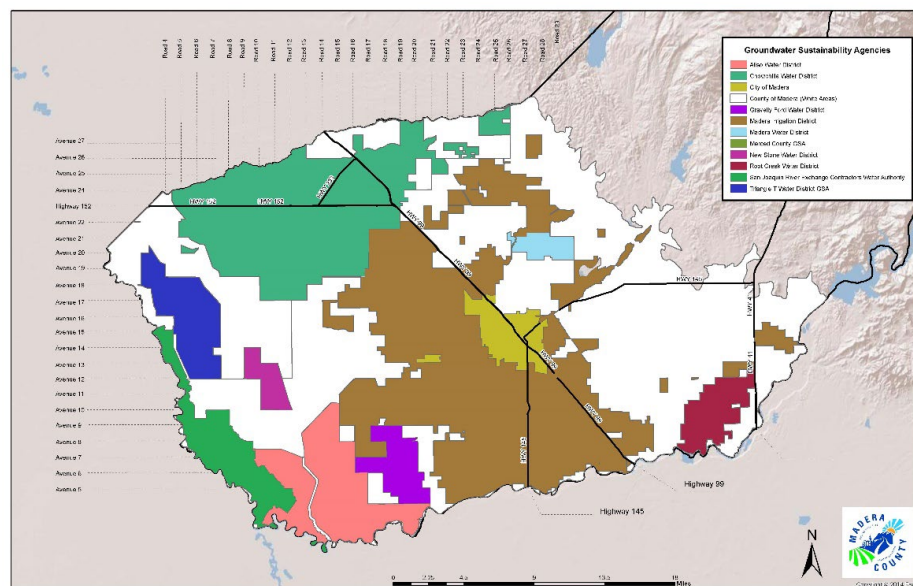
Madera County Groundwater Sustainability Agencies



Frequently Asked Questions

Q: What is the Madera County GSA?

A: Madera County GSA is composed of “white areas” on the map below that are the county responsibility under the Sustainable Groundwater Management Act. There are three separate groundwater sustainability agencies (GSAs) in three subbasins managed as the Madera County GSA.



About the Agency

The Madera County Groundwater Sustainability Agencies (GSAs) are located in the Madera, Chowchilla, and Delta-Mendota Subbasins. These agencies were formed under the requirements of the Sustainable Groundwater Management Act (SGMA). The areas that fell under county responsibility during GSA formation are the lands that were not within existing irrigation or water districts that chose to form their own GSAs.

The County GSAs are housed in the Department of Water and Natural Resources at Madera County.

Water and Natural Resources
Department

200 W. Fourth Street

Madera, CA 93637

(559) 662-8015

Q: When can I attend a meeting of the Madera County GSA?

A: Typically, the Board of Supervisors (acting as the Board of Directors) meets the first three Tuesdays of the month at 10:00 a.m. at the County Government Headquarters (200 W. Fourth Street, Madera) to discuss County GSA items. Agendas are found at maderacounty.com.

Q: What fees are in effect?

A: Currently, there is a Madera County GSA fee for administration and planning of approximately \$25/irrigated acre. There is preliminary injunction related to a GSP fee for projects, which means the GSP fee cannot currently be collected.

FAQs continue on back of page.

Find More Information Online:

<https://www.maderacountywater.com/county-gsas/>



Water and Natural Resources

200 West Fourth Street • Madera, CA 93637 • 559.662.8015 • maderacountywater.com • maderacounty.com



Madera County Groundwater Sustainability Agencies

Board of Directors

The Madera County Board of Supervisors (acting as the Board of Directors) meets the first three Tuesdays of the month at 10:00 a.m. at the County Government Headquarters (200 W. Fourth Street, Madera) to discuss County GSA items. Agendas are found at maderacounty.com.

District 1: Jordan Wamhoff

District 2: David Rogers

District 3: Robert Poythress

District 4: Leticia Gonzalez

District 5: Bobby Macaulay

Frequently Asked Questions

Q: What's an allocation? Are they in effect?

A: On June 8, 2021, the Madera County GSA ("white areas") adopted an allocation for irrigated acres within the Madera County GSA in the Madera, Chowchilla and Delta-Mendota Subbasins. The table below shows the inches of evapotranspiration of applied water (ETAW) per irrigated acre.

Year	Inches of ETaw		
	Madera Subbasin	Chowchilla Subbasin	Delta-Mendota Subbasin
2021	28.3	26.7	19.8
2022	28.0	26.3	19.6
2023	27.7	25.9	19.3
2024	27.4	25.5	19.1
2025	27.1	25.1	18.9

Q: What is going on with the injunction?

A: There is a preliminary injunction related to GSP fees in the Madera and Delta-Mendota Subbasins. This means there are no fees for projects for sustainability, including recharge, land repurposing, domestic well mitigation, and purchases of water. Without fees, there are no projects currently towards sustainability.

Q: Could grants pay for projects?

A: The County, on behalf of the County GSA and the Madera and Chowchilla Subbasins, has applied for and received close to 30 million dollars in state grant funding for groundwater sustainability. This funding paid for domestic well inventories, installation of monitoring wells, recharge, and the complete costs of the groundwater sustainability plans. The County GSA will continue to apply for grants but receiving future grant funds is not a guarantee.

Q: What's going on with land repurposing?

A: There are draft rules for land repurposing that may be adopted by the Board on 12/20/2022. This program would pay people to take land out of irrigated production for a fixed amount of time. This project will not be implemented with the injunction in effect.

Q: What's going on with recharge?

A: The Madera County GSA has received multiple rounds of grant funding to pay for recharge projects, which are in progress. When additional funding is available, additional projects could be developed. Recharge cannot be developed beyond the grant-funded work with the injunction in effect.

