

# Madera County Flowmeter Data Submission Training

03/29/23

# Agenda

1. Measurement options for growers
2. Requirements for using flowmeters for measurement
3. Flowmeter data collection form and submission
4. Q & A time

# 2023 Measurement Options

- On December 20, 2022, Board adopted resolutions providing three measurement methods for groundwater allocations in 2023 and moving ahead:
  - IrriWatch
  - Land IQ
  - Private
- Originally, the measurement choice form was due January 20, 2023.
- Due to weather, the deadline was extended to February 15, 2023.
- Website revised for additional explanation and checklists.
- Additional vendors for meter inspections added throughout January and February 2023.



# Requirements to use Private Flowmeter Readings

- A map depicting the exact location of groundwater well(s), and parcel(s) with APN(s) identified, and field(s) served by the well(s).
- Photographs and a meter installation report for the well(s) serving the parcel(s). A meter installation report must be completed by a County GSA approved vendor. A list of vendors can be found at: [www.maderacountywater.com](http://www.maderacountywater.com)
- A compliant meter calibration report or results of a field flow test conducted by a County GSA approved vendor for each well. A list of vendors can be found at: [www.maderacountywater.com](http://www.maderacountywater.com)
- A written attestation that the designated well(s) only serve the identified parcel(s) or field(s).
- A written attestation of the validity that all submitted information represents current conditions for the well(s).

# Flowmeter Data Collection Form Submission

Collecting multiple types of data through browser interface utilizing:

- GPS
- Datetime stamp
- Photo/video data
- Textual data
- Background metadata

Making the world better through data

ODK is in active use globally. Below are a few of the social impact organizations that trust ODK with their data.



World Health Organization  
Uses ODK for large-scale disease surveillance and routine immunization.  
[Learn more](#)

Red Cross  
Uses ODK to improve the efficiency and impact of humanitarian action.  
[Learn more](#)

Jane Goodall Institute  
Uses ODK to track the health of chimpanzee and other ape habitats across Africa.  
[Learn more](#)

# Madera County Grower Flowmeter Readings (Continued...)

Each form submission will require users to indicate if they are a new or returning user.

New users will be required to enter their first and last name, their email address, and their phone number.



12:59 PM 63%  
fielddata.davidsengineering.com

Call us at (559) 662-8015 or email us at [ETmeasurement@maderacounty.com](mailto:ETmeasurement@maderacounty.com) with questions.

**\*Are you a new user?**  
*A "new user" means you have never filled out this form or provided your name and email before.*

☒ Yes  
☐ No

**\*What is your first and last name?**

**\*What is your email address?**

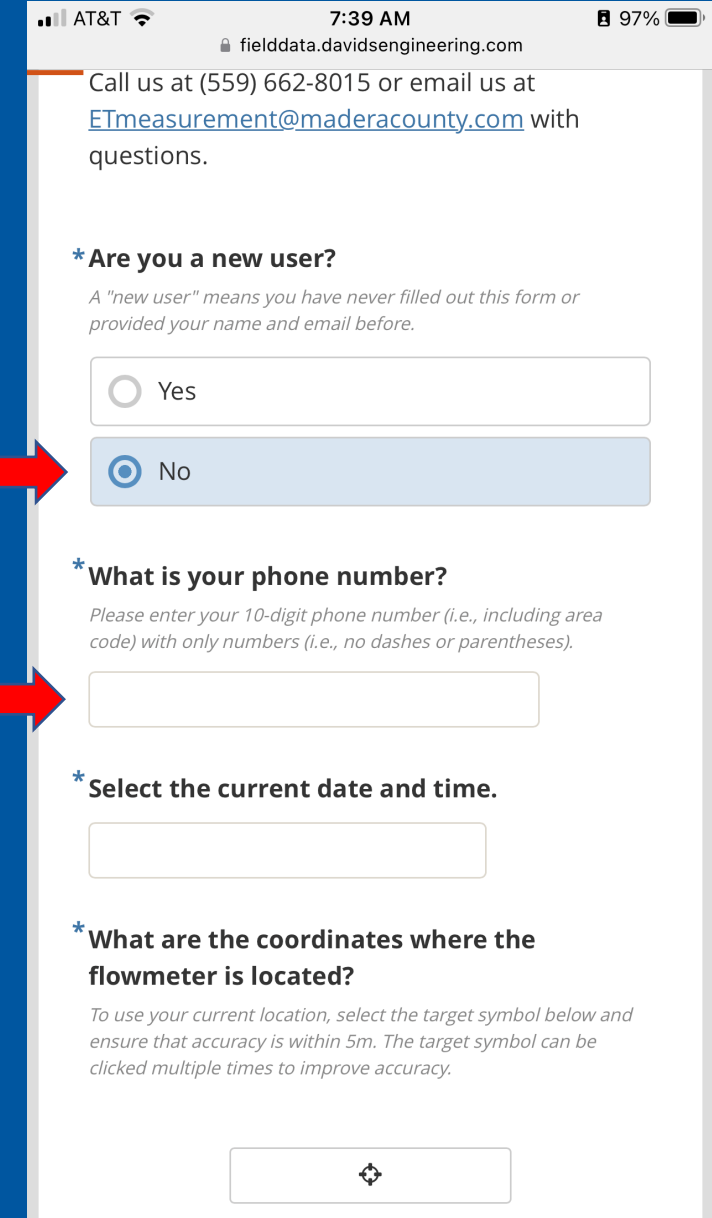
**\*What is your phone number?**  
*Please enter your 10-digit phone number (i.e., including area code) with only numbers (i.e., no dashes or parentheses).*

**\*What are the coordinates where the flowmeter is located?**  
*To use your current location, select the target symbol below and ensure that accuracy is within 5m. The target symbol can be clicked multiple times to improve accuracy.*

# Madera County Grower Flowmeter Readings (Continued...)

Each form submission will require users to indicate if they are a new or returning user.

If the user is a returning user, they are only required to enter their phone number



Call us at (559) 662-8015 or email us at [ETmeasurement@maderacounty.com](mailto:ETmeasurement@maderacounty.com) with questions.

**\*Are you a new user?**  
A "new user" means you have never filled out this form or provided your name and email before.

☐ Yes

☒ No

**\*What is your phone number?**  
Please enter your 10-digit phone number (i.e., including area code) with only numbers (i.e., no dashes or parentheses).

**\*Select the current date and time.**

**\*What are the coordinates where the flowmeter is located?**  
To use your current location, select the target symbol below and ensure that accuracy is within 5m. The target symbol can be clicked multiple times to improve accuracy.

# Madera County Grower Flowmeter Readings (Continued...)

Select the current date and time that will auto populate on your phone.

Tap the target icon to pull in your immediate GPS location. The accuracy of the GPS can be improved by continuing to tap the target icon.

If the form is not allowing you to use your GPS, check your browser permissions on your phone. You will need to allow your browser access to your location in order to use your current GPS data.

AT&T 2:33 PM 53%  
fielddata.davidsengineering.com

**\* Select the current date and time.**

Feb 24, 2023 at 2:33 PM

**\* What are the coordinates where the flowmeter is located?**

To use your current location, select the target symbol below and ensure that accuracy is within 5m. The target symbol can be clicked multiple times to improve accuracy.

latitude (x.y °)  
39.726053

longitude (x.y °)  
-121.830753

altitude (m)  
63.40894889831543

accuracy (m)  
16.00241654736175

🗑️

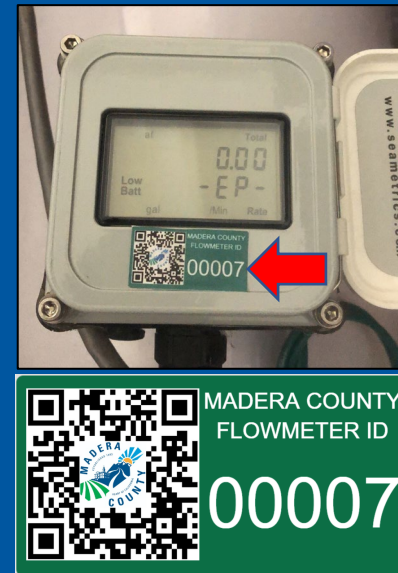


# Madera County Grower Flowmeter Readings (Continued...)

Select the **Click here to upload file** window and select **Take Photo** to use your phone's camera. Make sure that your browser is set to allow access to your camera. Please include the data from your flowmeter, as well as your flowmeter ID sticker in the photo. The value of the flowmeter's totalizer, flow, and Flowmeter ID should be clearly visible and legible in the photo.

Adhere your Flowmeter ID label on your meter readout such that the data and label are included in the same photo.

Enter the Flowmeter ID number found on your Flowmeter ID label. It is not necessary to enter the leading zeros.



AT&T Wi-Fi 2:54 PM 49%  
fielddata.davidsengineering.com

**\*Take a photo of the flowmeter's readout.**  
*The value of the flowmeter's totalizer, flow, and Flowmeter ID should be clearly visible and legible in the photo.*

[Click here to upload file. \(< 100MB\)](#)

**\*Please enter the number on your Flowmeter ID label.**  
*Please enter 7 if the ID is 0007 or 286 if the ID is 0286.*

**\*What is the current flow on the flowmeter's readout?**  
*Enter flow exactly as it appears on the flowmeter readout, including any number(s) before and after the decimal point. Enter 0 (i.e., zero), if the well is not currently operating.*

**\*What is the current volume on the flowmeter's readout?**  
*Enter volume exactly as it appears on the flowmeter readout, including any number(s) before and after the decimal point.*

Take an overview photo of the flowmeter if

# Madera County Grower Flowmeter Readings (Continued...)

Enter the current flow from the flowmeter readout exactly as it appears. Flow volume units (e.g., GPM, CFS) must remain static. If possible, have pump running under steady state while capturing flow.

Enter the current volume from the flowmeter readout exactly as it appears. Totalizer units (e.g., AF) must remain static.



**\*Take a photo of the flowmeter's readout.**

The value of the flowmeter's totalizer, flow, and Flowmeter ID should be clearly visible and legible in the photo.

Click here to upload file. (< 100MB)



**\*Please enter the number on your Flowmeter ID label.**

Please enter 7 if the ID is 0007 or 286 if the ID is 0286.

**\*What is the current flow on the flowmeter's readout?**

Enter flow exactly as it appears on the flowmeter readout, including any number(s) before and after the decimal point. Enter 0 (i.e., zero), if the well is not currently operating.

**\*What is the current volume on the flowmeter's readout?**

Enter volume exactly as it appears on the flowmeter readout, including any number(s) before and after the decimal point.

Take an overview photo of the flowmeter if

# Madera County Grower Flowmeter Readings (Continued...)

You have the option to record another image if there is anything else to document, (*e.g.*, unable to include flowmeter data and flowmeter ID in same image).

Enter any comments about the measurement or flowmeter.

Finally, submit the data by pushing the blue **Submit** button.

AT&T Wi-Fi 3:03 PM 48%  
fielddata.davidsengineering.com

Take an overview photo of the flowmeter if there is anything important to document (optional).

Click here to upload file. (< 100MB) ↻

Enter any comments about the measurement (optional).

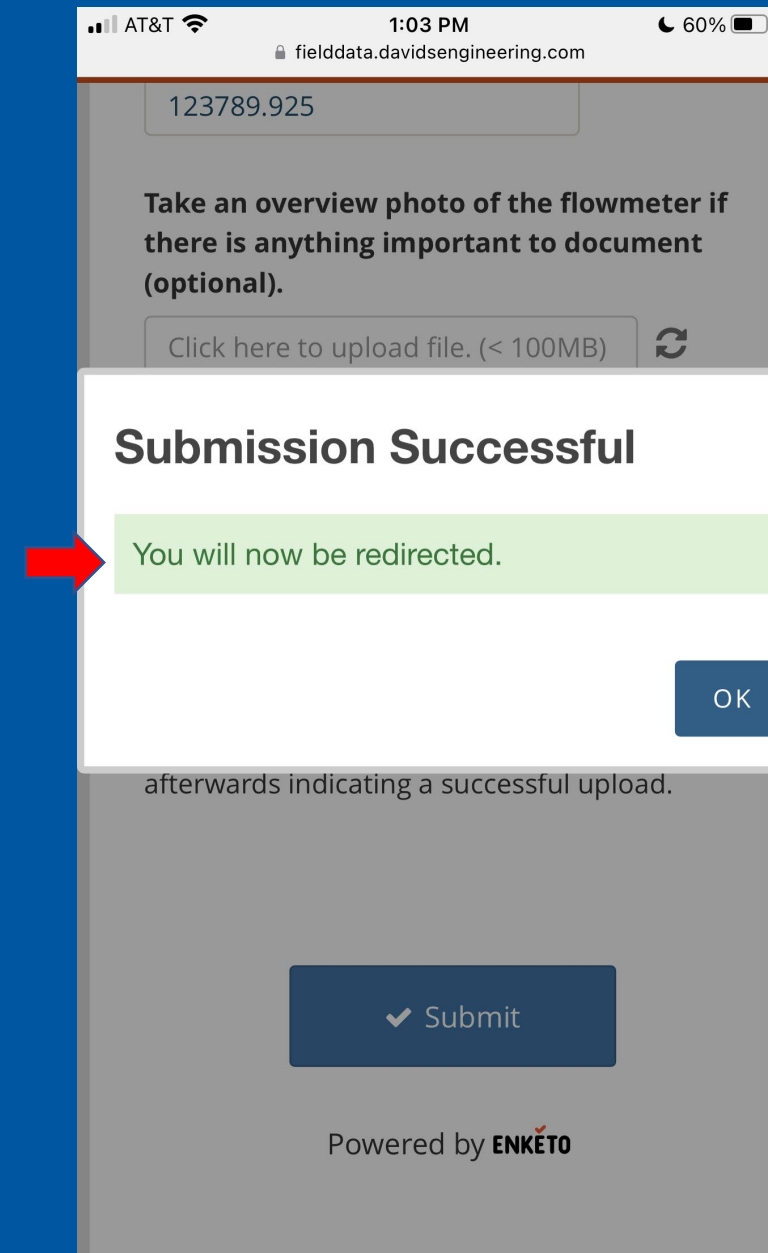
Once you click the blue 'Submit' button below to finalize and submit your information, please ensure that you see a "Success!" banner pop up afterwards indicating a successful upload.

✓ Submit

Powered by ENKETO

# Madera County Grower Flowmeter Readings (Continued...)

A **Submission Successful** response after selecting the **Submit** button ensures that all data (GPS coordinates, datetime, photos, and text) will be successfully stored online and able to be reviewed by Madera staff for quality assurance and control.



The screenshot shows a mobile app interface for field data collection. At the top, the status bar shows AT&T, signal strength, Wi-Fi, 1:03 PM, and 60% battery. The URL bar shows fielddata.davidsengineering.com. Below the URL bar, there is a text input field containing the number 123789.925. A message prompt says "Take an overview photo of the flowmeter if there is anything important to document (optional)." Below this is a button that says "Click here to upload file. (< 100MB)" with a refresh icon. A modal dialog box is open in the center, titled "Submission Successful". Inside the modal, a green box contains the text "You will now be redirected." and an "OK" button is in the bottom right corner. A red arrow points from the text "A Submission Successful response" to this modal. Below the modal, the text "afterwards indicating a successful upload." is visible. At the bottom of the screen, there is a "Submit" button with a checkmark icon and the text "Powered by ENKETO".



New Madera County Grower Flowmeter Readings form here:  
<https://bit.ly/3YYXpZm>



- This form must be submitted monthly, with submissions accepted the 1<sup>st</sup> through the 10<sup>th</sup> of the month.
- Contact at [ETmeasurement@maderacounty.com](mailto:ETmeasurement@maderacounty.com) with questions.

# Q & A Time