

IN CASE OF FLOOD



Bridge

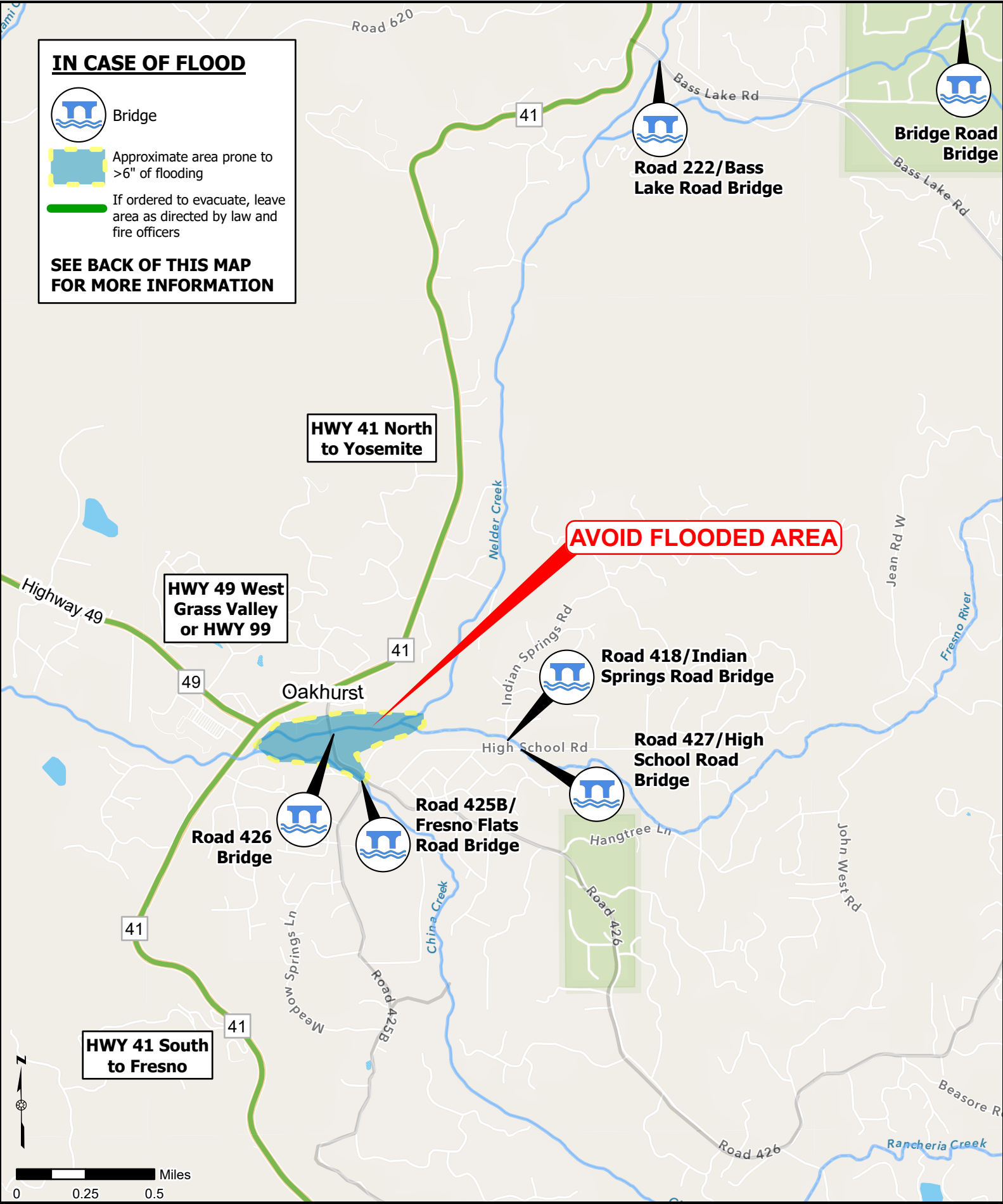


Approximate area prone to >6" of flooding



If ordered to evacuate, leave area as directed by law and fire officers

SEE BACK OF THIS MAP FOR MORE INFORMATION

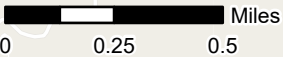


HWY 41 North to Yosemite

HWY 49 West Grass Valley or HWY 99

AVOID FLOODED AREA

HWY 41 South to Fresno



Oakhurst Citizen Map

Madera County Office of Emergency Services
Prepared by Kjeldsen, Sinnock & Neudeck, Inc.

Map data © OpenStreetMap contributors,
Map layer by Esri, Fresno County Dept. PWP,
Bureau of Land Management, Esri, HERE,
Garmin, INCREMENT P, USGS, METI/NASA,
EPA, USDA





Be Prepared to Evacuate!

Areas of Madera County are subject to flooding. If you live in one of these areas you should be prepared to evacuate your home in the unlikely event that a flood problem develops with your community and officials feel you should leave for your own safety.

The County has developed these Citizen Maps to help citizens understand major evacuation routes that may be used during a flood emergency. Officials have identified major roads to potentially use while evacuating, as well as areas commonly impacted by flooding. The exact road and direction to be used will be announced at the time of the event when the threat is known.

Please keep the brochure with the map for your community where you can find it in an emergency. Use the map to identify your closest evacuation route, the closest location where you can get help if needed, MCALERT, and the radio frequencies you can listen to for additional evacuation instructions. You should also review the following additional safety information with your family.

- Listen to KFBK 1530 AM for initial warnings for your neighborhood
- Join MCALERT to receive notifications
- If forced to shelter in a building due to floodwaters, make sure you can access the roof
- Have a bright cloth or flashlight with you at all times to use to signal rescuers if necessary
- Do not drive through flooded areas. Standing water is often deeper than it looks
- Have a plan where your family will meet if separated

This brochure was funded with a grant from the CA Department of Water Resources' Statewide Emergency Resposne Plan

Find more safety information please visit the following website:
www.maderacounty.com/government/sheriff/office-of-emergency-services/evacuation-information

Federal and local officials encourage residents living behind levees to obtain flood insurance.

The Madera County Sheriff's Office of Emergency Services
559-675-7770 or 1-800-560-4911

Madera County Animal Shelter
14269 Road 28 Madera, CA 93638
559-675-7891



What to do in a FLOOD



Oakhurst Citizen Map

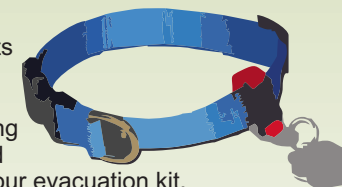
Be Prepared!

Have a battery or crank powered AM/FM radio. Critical information in an emergency will be broadcast through commercial and government-owned radio transmitters.



Start an evacuation kit by obtaining a small bag and inserting a zippered plastic bag containing copies of family prescriptions, important family documents, and family contact information with some spare clothes.

Protect your pets by giving them an identification collar and placing their picture and description in your evacuation kit.



For more information contact:
The Madera County Office of Emergency Services

(559) 675-7770