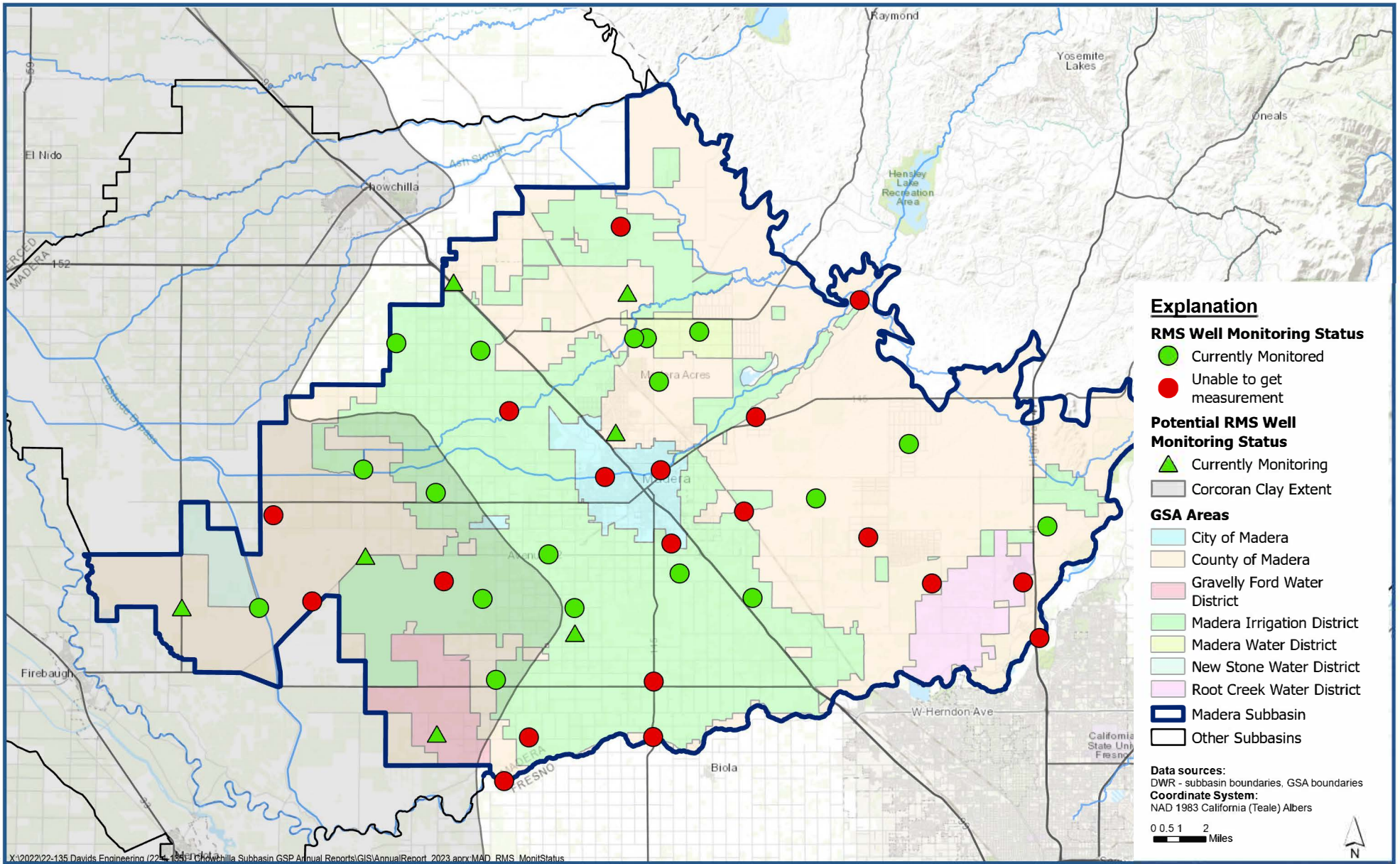




Appendix D. Status of Monitoring Efforts for RMS Wells in Madera Subbasin.



Monitoring Status of RMS Network

Madera Subbasin
Groundwater Sustainability Plan 2023 Annual Report

Figure D-1

Appendix D. Table 1 - Status of Monitoring Efforts for RMS Wells in Madera Subbasin

Subbasin	GSA	RMS ID	Fall 2022 Monitoring Status	Most Recent Successful WL Msmt	Most Recent Successful WL Msmt (Season)
Madera	City of Madera	COM RMS-1	Fall sampling did not occur. Transitioning to new monitoring schedule.	5/25/2022	Summer 2022
Madera	City of Madera	COM RMS-2	Fall sampling did not occur. Transitioning to new monitoring schedule.	6/6/2022	Summer 2022
Madera	City of Madera	COM RMS-3	Fall sampling did not occur. Transitioning to new monitoring schedule.	5/25/2022	Summer 2022
Madera	County of Madera	MCE RMS-1	NM - Temporarily inaccessible	3/16/2021	Spring 2021
Madera	County of Madera	MCE RMS-2	Currently Monitored	11/14/2022	Fall 2022
Madera	County of Madera	MCE RMS-3	Currently Monitored	10/27/2022	Fall 2022
Madera	County of Madera	MCE RMS-4	Currently Monitored	10/27/2022	Fall 2022
Madera	County of Madera	MCE RMS-5	NM - Special/Other	3/25/2022	Spring 2022
Madera	County of Madera	MCE RMS-6	No Fall 2022 measurement reported.	3/22/2022	Spring 2022
Madera	County of Madera	MCE RMS-7	NM - Well has been destroyed	10/18/2018	Fall 2018
Madera	County of Madera	MCE RMS-8	NM - Owner will not allow access	10/16/2015	Fall 2015
Madera	County of Madera	MCE RMS-9	Need to follow up with SJRRP	12/6/2019	Fall 2019
Madera	County of Madera	MCW RMS-1	NM - Well has been destroyed	10/18/2019	Fall 2019
Madera	County of Madera	MCW RMS-2	NM - Temporarily inaccessible	3/12/2021	Spring 2021
Madera	County of Madera	MCW RMS-3	Currently Monitored	10/30/2022	Fall 2022
Madera	County of Madera	MCW RMS-4	Currently Monitored	10/30/2022	Fall 2022
Madera	County of Madera	MCW RMS-5	Need to follow up with SJRRP	6/20/2018	Summer 2018
Madera	Madera Irrigation District	MID RMS-1	NM - Special/Other	10/17/2019	Fall 2019
Madera	Madera Irrigation District	MID RMS-2	Currently Monitored	10/12/2022	Fall 2022
Madera	Madera Irrigation District	MID RMS-3	Currently Monitored	10/25/2022	Fall 2022
Madera	Madera Irrigation District	MID RMS-4	Currently Monitored	10/12/2022	Fall 2022
Madera	Madera Irrigation District	MID RMS-5	Currently Monitored	10/12/2022	Fall 2022
Madera	Madera Irrigation District	MID RMS-6	NM - Pumping	10/20/2021	Fall 2021
Madera	Madera Irrigation District	MID RMS-7	Currently Monitored	10/18/2022	Fall 2022
Madera	Madera Irrigation District	MID RMS-8	Need to reengage with well owner.	2/14/2014	Spring 2014
Madera	Madera Irrigation District	MID RMS-9	Need to reengage with well owner.	2/12/2014	Spring 2014

Appendix D. Table 1 - Status of Monitoring Efforts for RMS Wells in Madera Subbasin

Subbasin	GSA	RMS ID	Fall 2022 Monitoring Status	Most Recent Successful WL Msmt	Most Recent Successful WL Msmt (Season)
Madera	Madera Irrigation District	MID RMS-10	Currently Monitored	10/11/2022	Fall 2022
Madera	Madera Irrigation District	MID RMS-11	Currently Monitored	10/21/2022	Fall 2022
Madera	Madera Irrigation District	MID RMS-12	Currently Monitored	10/12/2022	Fall 2022
Madera	Madera Irrigation District	MID RMS-13	Currently Monitored	10/17/2022	Fall 2022
Madera	Madera Irrigation District	MID RMS-14	Need to reengage with well owner.	2/11/2014	Spring 2014
Madera	Madera Irrigation District	MID RMS-15	No Fall 2022 measurement reported.	3/22/2022	Spring 2022
Madera	Madera Irrigation District	MID RMS-16	Currently Monitored	10/18/2022	Fall 2022
Madera	Madera Irrigation District	MID RMS-17	Need to follow up with SJRRP	12/10/2019	Fall 2019
Madera	Madera Water District	MWD RMS-1	Currently Monitored	11/10/2022	Fall 2022
Madera	Madera Water District	MWD RMS-2	Currently Monitored	11/10/2022	Fall 2022
Madera	Madera Water District	MWD RMS-3	Currently Monitored	11/10/2022	Fall 2022

NM = no measurement. Measurement attempted but was unsuccessful.

Appendix D. Table 2 - Status of Monitoring Efforts for Potential RMS Wells in Madera Subbasin

Subbasin	GSA	RMS ID	Fall 2022 Monitoring Status	Most Recent Successful WL Msmt	Most Recent Successful WL Msmt (Season)
Madera	County of Madera	MSB MW-3-139	Currently Monitored	10/26/2022	Fall 2022
Madera	County of Madera	MSB MW-3-295	Currently Monitored	10/26/2022	Fall 2022
Madera	County of Madera	MSB MW-3-430	Currently Monitored	10/26/2022	Fall 2022
Madera	County of Madera	MSB MW-4-375	Currently Monitored	10/27/2022	Fall 2022
Madera	County of Madera	MSB MW-4-695	Currently Monitored	10/27/2022	Fall 2022
Madera	County of Madera	MSB MW-4-905	Currently Monitored	10/27/2022	Fall 2022
Madera	County of Madera	MSB MW-5-210	Currently Monitored	10/26/2022	Fall 2022
Madera	County of Madera	MSB MW-5-375	Currently Monitored	10/26/2022	Fall 2022
Madera	County of Madera	MSB MW-5-590	Currently Monitored	10/26/2022	Fall 2022
Madera	Gravelly Ford Water District	MSB MW-6-350	Currently Monitored	10/26/2022	Fall 2022
Madera	Gravelly Ford Water District	MSB MW-6-520	Currently Monitored	10/26/2022	Fall 2022
Madera	Gravelly Ford Water District	MSB MW-6-715	Currently Monitored	10/26/2022	Fall 2022
Madera	Madera Irrigation District	MSB MW-9-320	Currently Monitored	10/26/2022	Fall 2022
Madera	Madera Irrigation District	MSB MW-9-725	Currently Monitored	10/26/2022	Fall 2022
Madera	Madera Irrigation District	MSB MW-9-955	Currently Monitored	10/26/2022	Fall 2022
Madera	County of Madera	MSB MW-10-330	Currently Monitored	10/25/2022	Fall 2022
Madera	County of Madera	MSB MW-10-510	Currently Monitored	10/25/2022	Fall 2022
Madera	County of Madera	MSB MW-10-880	Currently Monitored	10/25/2022	Fall 2022
Madera	County of Madera	MSB MW-11-345	Currently Monitored	10/27/2022	Fall 2022
Madera	County of Madera	MSB MW-11-695	Currently Monitored	10/27/2022	Fall 2022
Madera	County of Madera	MSB MW-11-880	Currently Monitored	10/27/2022	Fall 2022