

# Madera County Flowmeter Data Submission Training

05/22/23

# Agenda

1. ODK Overview and Form Submission Review
2. Common Flowmeter Submission Issues
3. 2023 Verification Project
4. Q & A




# Flowmeter Data Collection Form Submission

Collecting multiple types of data through browser interface utilizing:

- GPS
- Datetime stamp
- Photo/video data
- Textual data
- Background metadata

Making the world better through data

ODK is in active use globally. Below are a few of the social impact organizations that trust ODK with their data.



World Health Organization  
Uses ODK for large-scale disease surveillance and routine immunization.  
[Learn more](#)

Red Cross  
Uses ODK to improve the efficiency and impact of humanitarian action.  
[Learn more](#)

Jane Goodall Institute  
Uses ODK to track the health of chimpanzee and other ape habitats across Africa.  
[Learn more](#)

# Madera County Grower Flowmeter Readings (Continued...)

Each form submission will require users to indicate if they are a new or returning user.

New users will be required to enter their first and last name, their email address, and their phone number.



AT&T 12:59 PM 63%  
fielddata.davidsengineering.com

Call us at (559) 662-8015 or email us at [ETmeasurement@maderacounty.com](mailto:ETmeasurement@maderacounty.com) with questions.

**\*Are you a new user?**  
*A "new user" means you have never filled out this form or provided your name and email before.*

☒ Yes  
☐ No

**\*What is your first and last name?**

**\*What is your email address?**

**\*What is your phone number?**  
*Please enter your 10-digit phone number (i.e., including area code) with only numbers (i.e., no dashes or parentheses).*

**\*What are the coordinates where the flowmeter is located?**  
*To use your current location, select the target symbol below and ensure that accuracy is within 5m. The target symbol can be clicked multiple times to improve accuracy.*

# Madera County Grower Flowmeter Readings (Continued...)

Each form submission will require users to indicate if they are a new or returning user.

If the user is a returning user, they are only required to enter their phone number

Call us at (559) 662-8015 or email us at [ETmeasurement@maderacounty.com](mailto:ETmeasurement@maderacounty.com) with questions.

**\*Are you a new user?**  
*A "new user" means you have never filled out this form or provided your name and email before.*

☐ Yes

☒ No

**\*What is your phone number?**  
*Please enter your 10-digit phone number (i.e., including area code) with only numbers (i.e., no dashes or parentheses).*

**\*Select the current date and time.**

**\*What are the coordinates where the flowmeter is located?**  
*To use your current location, select the target symbol below and ensure that accuracy is within 5m. The target symbol can be clicked multiple times to improve accuracy.*

# Madera County Grower Flowmeter Readings (Continued...)

Select the current date and time that will auto populate on your phone.

Tap the target icon to pull in your immediate GPS location. The accuracy of the GPS can be improved by continuing to tap the target icon.

If the form is not allowing you to use your GPS, check your browser permissions on your phone. You will need to allow your browser to access use your location in order to pull in your current GPS.

AT&T 2:33 PM 53%  
fielddata.davidsengineering.com

**\* Select the current date and time.**

Feb 24, 2023 at 2:33 PM

**\* What are the coordinates where the flowmeter is located?**

To use your current location, select the target symbol below and ensure that accuracy is within 5m. The target symbol can be clicked multiple times to improve accuracy.

latitude (x.y °)  
39.726053

longitude (x.y °)  
-121.830753

altitude (m)  
63.40894889831543

accuracy (m)  
16.00241654736175

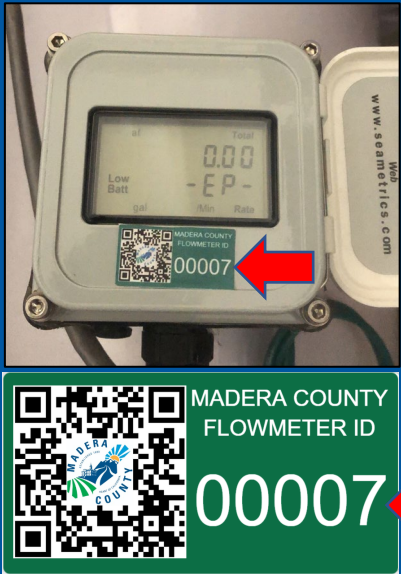
🗑️

# Madera County Grower Flowmeter Readings (Continued...)

Select **Click here to upload file** and select **Take Photo** to use your phone's camera. Make sure that your browser is set to allow access to your camera. Include the data from your flowmeter, as well as your flowmeter ID sticker in the photo. The value of the flowmeter's totalizer, flow, and Flowmeter ID should be clearly visible and legible in the photo.

Adhere your Flowmeter ID label on your meter readout such that the data and label are included in the same photo.

Enter the Flowmeter ID number found on your Flowmeter ID label. It is not necessary to enter the leading zeros.



AT&T Wi-Fi 2:54 PM 49% fielddata.davidsengineering.com

**\*Take a photo of the flowmeter's readout.**  
*The value of the flowmeter's totalizer, flow, and Flowmeter ID should be clearly visible and legible in the photo.*

Click here to upload file. (< 100MB)

**\*Please enter the number on your Flowmeter ID label.**  
*Please enter 7 if the ID is 0007 or 286 if the ID is 0286.*

**\*What is the current flow on the flowmeter's readout?**  
*Enter flow exactly as it appears on the flowmeter readout, including any number(s) before and after the decimal point. Enter 0 (i.e., zero), if the well is not currently operating.*

**\*What is the current volume on the flowmeter's readout?**  
*Enter volume exactly as it appears on the flowmeter readout, including any number(s) before and after the decimal point.*

Take an overview photo of the flowmeter if

# Madera County Grower Flowmeter Readings (Continued...)

Enter the current flow (or flowrate) from the flowmeter readout exactly as it appears. Flow units (*e.g.*, GPM, CFS, etc.) must remain static for each flowmeter. If possible, have pump running under steady state while capturing flow.

Enter the current totalizer volume from the flowmeter readout exactly as it appears. Totalizer units (*e.g.*, AF) must remain static for each flowmeter.



**\*Take a photo of the flowmeter's readout.**

*The value of the flowmeter's totalizer, flow, and Flowmeter ID should be clearly visible and legible in the photo.*

Click here to upload file. (< 100MB)



**\*Please enter the number on your Flowmeter ID label.**

*Please enter 7 if the ID is 0007 or 286 if the ID is 0286.*

**\*What is the current flow on the flowmeter's readout?**

*Enter flow exactly as it appears on the flowmeter readout, including any number(s) before and after the decimal point. Enter 0 (i.e., zero), if the well is not currently operating.*

**\*What is the current volume on the flowmeter's readout?**

*Enter volume exactly as it appears on the flowmeter readout, including any number(s) before and after the decimal point.*

Take an overview photo of the flowmeter if



# Madera County Grower Flowmeter Readings (Continued...)

You have the option to record another image if there is anything else to document, (*e.g.*, unable to include flowmeter data and flowmeter ID in same image).

Enter any comments about the measurement or flowmeter.

Finally, submit the data by pushing the blue **Submit** button.

AT&T Wi-Fi 3:03 PM 48%

fielddata.davidsengineering.com

Take an overview photo of the flowmeter if there is anything important to document (optional).

Click here to upload file. (< 100MB)

Enter any comments about the measurement (optional).

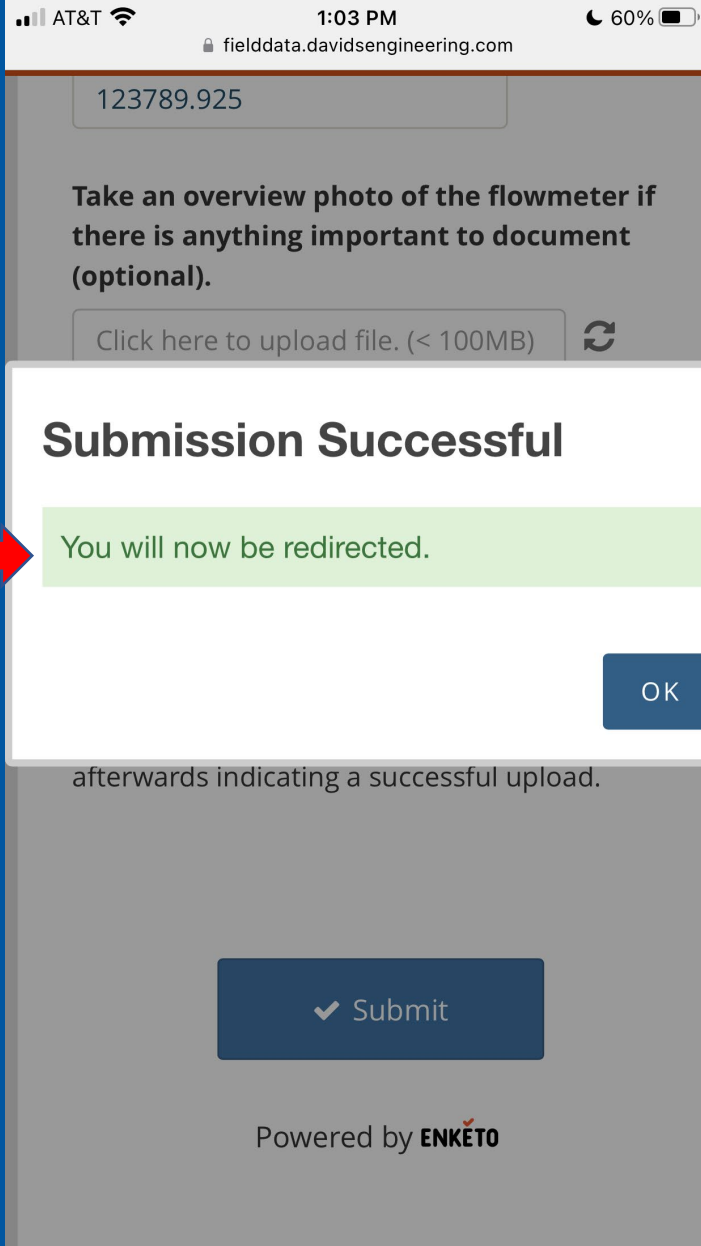
Once you click the blue 'Submit' button below to finalize and submit your information, please ensure that you see a "Success!" banner pop up afterwards indicating a successful upload.

Submit

Powered by ENKETO

# Madera County Grower Flowmeter Readings (Continued...)

A **Submission Successful** response after selecting the **Submit** button ensures that all data (GPS, datetime, photos, and text) will be successfully stored on ODK servers and able to be reviewed by Madera staff for quality assurance and control.



The screenshot shows a mobile app interface on a smartphone. At the top, the status bar displays 'AT&T', signal strength, Wi-Fi, time '1:03 PM', and battery '60%'. Below the status bar, the URL 'fielddata.davidsengineering.com' is visible. A text input field contains the number '123789.925'. Below this, a message reads: 'Take an overview photo of the flowmeter if there is anything important to document (optional)'. Underneath is a button that says 'Click here to upload file. (< 100MB)' with a refresh icon. A white modal box is centered on the screen with the title 'Submission Successful' in bold. Inside the modal, a green message box says 'You will now be redirected.' with a red arrow pointing to it from the left. An 'OK' button is in the bottom right corner of the modal. Below the modal, the text 'afterwards indicating a successful upload.' is visible. At the bottom of the screen is a large dark blue button with a checkmark and the word 'Submit'. Below that, it says 'Powered by ENKETO'.

# Madera County Grower Flowmeter Readings Form



<https://bit.ly/3YYXpZm>

- This form must be submitted monthly, with submissions accepted the 1<sup>st</sup> through the 10<sup>th</sup> of the month.
- Contact at [ETmeasurement@maderacounty.com](mailto:ETmeasurement@maderacounty.com) with questions.
- *If you cannot upload data, or there are issues with your flowmeters, you will be defaulted to Land IQ and get paper reports once a month.*

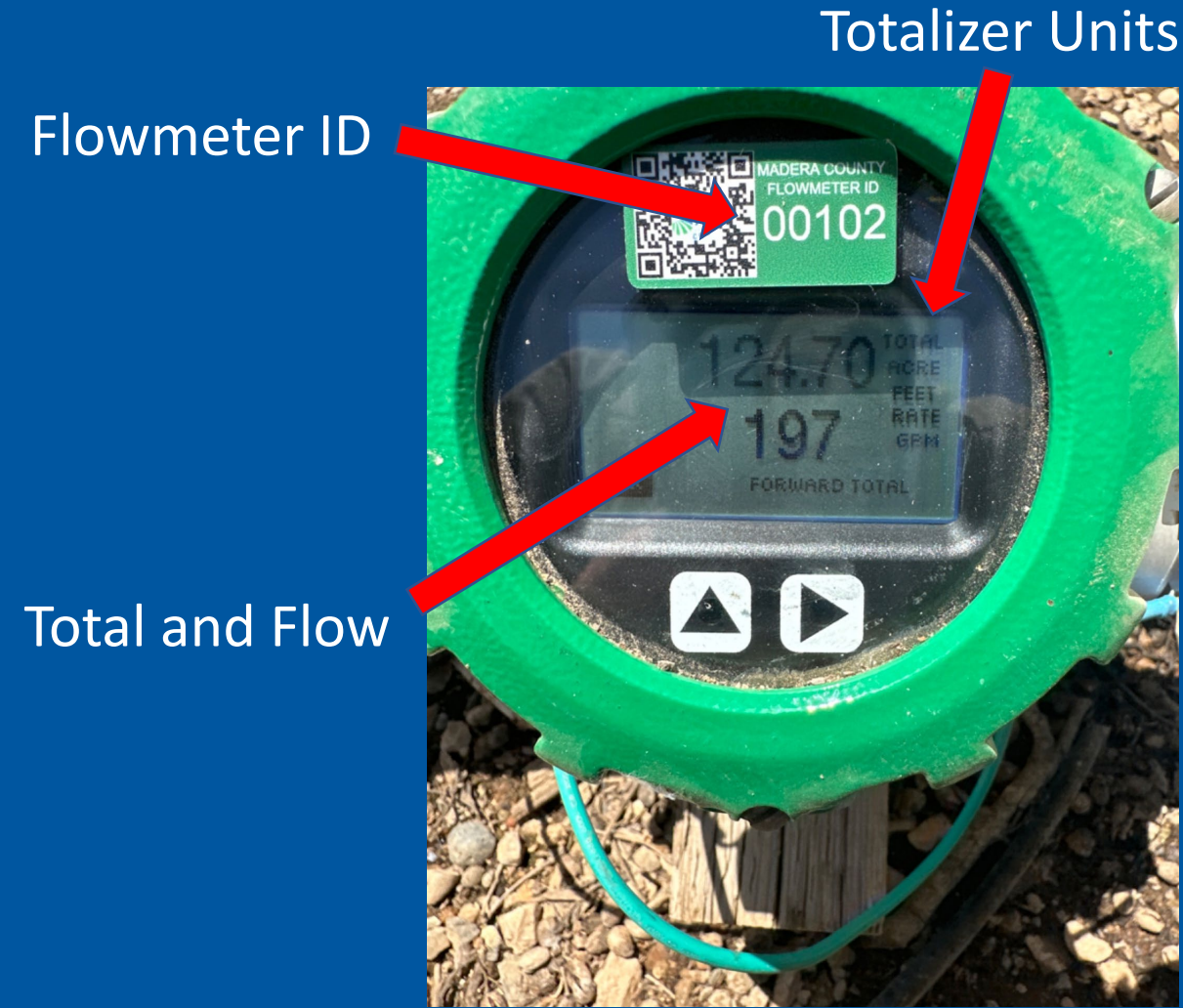
# Common Flowmeter Submission Issues To Date

- Missing Baseline Reading
- Missing Post-Baseline Reading
- Photos Not Showing Totalizer and Flowrate Information
- Photos Not Showing the Flowmeter ID
- Photos Not Showing Flowmeter Units (*e.g.*, AF, Gallons, etc.)



# Example of a Correct Flowmeter Photo

- This is a good example of a flowmeter photo that:
  - (1) shows the necessary total and flow,
  - (2) shows units, and
  - (3) includes the flowmeter ID within the same photo
- These are the three key pieces of information



# Missing Baseline Reading

- Picture on the right was from a flowmeter submission on 05/02/23 (209.525 AF)
- No flowmeter submission was provided in April for this flowmeter ID
- Therefore, the baseline for where the flowmeter “started” is unknown (*i.e.*, there is no way to verify if pumping occurred in April)
- Master Accounts with Flowmeters (one or more) without baseline readings will default to Land IQ



# Missing Post-Baseline Reading

- Flowmeter readings need to be submitted between the 1<sup>st</sup> and the 10<sup>th</sup> of each month
- For 2023, flowmeter readings should have started in April (due to the wet spring and system startup) and need to continue on a monthly basis through December
- For 2023, master accounts with flowmeters (one or more) without baseline or post-baseline readings will default to Land IQ
- Subsequent years (*i.e.*, 2024 and beyond) will require monthly readings for all 12 months of the year



# Photos Not Showing Totalizer and Flowmeter Information

- Photos of flowmeters need to accurately show: (1) flow and total, (2) flowmeter ID, and (3) totalizer units
- Submissions with missing information are not usable
- Master accounts with flowmeters (one or more) without usable baseline or post-baseline readings will default to Land IQ





# Photos Not Showing the Flowmeter ID

- The flowmeter ID and flowmeter data should be shown in one photo (not shown in example photo)
- In this case, the flowmeter ID could have been placed on the side of the flowmeter or on the green pipe below
- If the flowmeter ID cannot be shown in the same picture, use the following to submit a photo of the ID

Take an overview photo of the flowmeter if there is anything important to document (optional).

[Click here to upload file. \(< 100MB\)](#)



Place flowmeter  
ID here



# Photos Not Showing Flowmeter Units (e.g., AF, Gallons, etc.)

- Photos should clearly show units for totalizer and flowrate
- Units are necessary because allocations are managed in acre-feet (AF)
- If the flowmeter is digital and units are shown on a different screen, use the overview photo to capture units

Take an overview photo of the flowmeter if there is anything important to document (optional).

[Click here to upload file. \(< 100MB\)](#)



# 2023 Verification Project

- Entirely voluntary
- Public use of data collected
- Coordination with Project team
- Access to irrigated lands and groundwater wells to be granted to Madera County and its representatives during the field review period (5/1/23 – 12/31/23)
- Encourage participation of growers who selected flowmeters as their measurement approach (*e.g.*, support with establishment of Irrigation Units, etc.)

# Q & A