



## ITEM 4.b

Action Item: Consideration and recommendation to the Board of Directors to sign a letter to the state Department of Water Resources (DWR) relating to implementation of the Domestic Well Mitigation Program in 2026



@MADERACOUNTY  
maderacounty.com





## Key Elements in Letter

- Letter summarizes efforts of seven GSAs in the Madera Subbasin
- Includes topics that were discussed including program design, process, program award per well, conditions for approval
- Includes assurance that domestic well mitigation will have full geographic coverage within the Madera Subbasin
- Appreciates the use of SB 552 funds from the state for facilitation support in subbasin discussions



@MADERACOUNTY  
maderacounty.com





# Staff Recommendation

- Recommend consideration and signature for a letter to DWR



@MADERACOUNTY  
maderacounty.com





## ITEM 4.c

Action Item: Consideration and recommendation to approve a resolution to adopt rules for Domestic Well Mitigation in the Madera Subbasin, Madera County GSA



@MADERACOUNTY  
maderacounty.com





## Timeline

- Jan 2020: Joint GSP outlined a domestic well mitigation program
- Mar 2023: Madera County GSA and four partners signed an MOU establishing a cost-shared domestic well mitigation program
- Jan 2025: SB 552 grant facilitation began to develop a mitigation framework
- Aug 2025: Several parties chose to manage their own areas, leaving Madera County GSA to fund its area independently



@MADERACOUNTY  
maderacounty.com



# Draft Program Rules



## Eligibility

You must be a landowner with a domestic well located within the Madera Subbasin and within the Madera County GSA boundaries. Eligible applicants may receive funding through this program.

## Qualifications

The well must have gone dry due to declining groundwater levels. Wells impacted by subsidence (collapsed casing) may also qualify. A qualified professional will conduct an assessment after an application is submitted to confirm eligibility.

## Funding

The program provides up to \$35,000 reimbursement for the cost of drilling a new well or connecting to an existing community water system. Not covered: pump work, electrical repairs, landscaping, or lowering pumps. Any cost over \$35,000 is the landowner's responsibility.

## Mitigation Frequency

Each property (by APN) may only receive one mitigation through the program. The use of the program will be recorded on the property deed.

## Process

1. Apply: Complete and sign the application and submit a \$100 refundable deposit.
2. Assessment: The Madera County GSA or its agents will contact you for an initial well assessment.
3. Approval: If your well qualifies, a driller will be assigned by the Program Manager.
4. Payment: The GSA will pay the driller up to \$35,000.
5. Record: After completion, the mitigation record is filed on the property deed.



@MADERACOUNTY  
maderacounty.com



# Draft Program Application

- Based on Chowchilla Subbasin Program
- Two pages total (could be on-line as well as paper)
- Asks for landowner and property information
- Asks for well information
- Asks for any supporting documentation (e.g. well completion report, water level records)
- Provides direction and links to find parcel and well information.



@MADERACOUNTY  
maderacounty.com



# Outreach

- Chowchilla Water District
- Nitrate Management Zones
  - Chowchilla Management Zone
  - Valley Water Collaborative
- Self-Help Enterprises
- Madera Ag Water Association
- Community Groups
  - Madera Ranchos
  - Fairmead & Friends



@MADERACOUNTY  
maderacounty.com





## **Chowchilla Water District (Chowchilla Subbasin DWMP Administrator)**

- Approximately 85% Applicant Approval rate
- 30 applications over 2 years (Compares to 200 per year in Madera subbasin)
- Primary Reason for Denial: Incomplete Applications/Home Uninhabitable (mobile home with no electricity)
- No well data – CWD will accept letters from well maintenance company
- Direct mail is primary source of outreach



@MADERACOUNTY  
maderacounty.com





# Nitrate Management Zones

(Chowchilla Management Zone for Chowchilla & Valley Water Collaborative for Madera Subbasin)

Both Programs offer:

- Free well testing after construction for key contaminants — primarily nitrates
- Free bottled water delivery for households with unsafe nitrate levels

If SAFER funding is available:

- Additional testing for arsenic, 1,2,3-TCP, DBCP, EDB, total chromium, and uranium
- Potential funding assistance for noncompliant systems to connect to community water systems



@MADERACOUNTY  
maderacounty.com



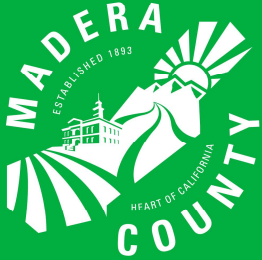
# Self Help Enterprises (Current administrator of valley-wide DWMP)

- Cannot sell home for profit for first five years and must remain in compliance with SHE rules
- Use of the program requires a well education class
- Recommends Door Hangers
- Suggest media buy
- Don't over complicate the program



@MADERACOUNTY  
maderacounty.com





# Madera Ag Water Association (MAWA)

- No objections to the proposed \$35,000 cap for well drilling assistance
- Clarification requested on eligibility for older dry wells; 2020 suggested as cutoff year
- Questions raised about handling dry wells near GSA boundaries affected by neighboring GSAs
- Recommendation to adjust the GSP fee annually based on the prior year's overdraft penalty



@MADERACOUNTY  
maderacounty.com



# Community Groups (Madera Ranchos)

- No objection to proposed \$35,000 funding cap
- Mention of multiple-property wells and need for APN grouping rules
- Requests to educate well drillers about the program
- Suggested disclaimers about no property liens
- Recommended adding well deepening options (not just full replacements)
- Concerns about fairness and misuse of funds by farmers
- Called for bar graphs showing spending and participation
- Proposed slogans: 'Dry Well Help', 'Private Well', 'Homeowners Well'



@MADERACOUNTY  
maderacounty.com



# Community Groups

## (Fairmead & Friends)

- Concerns about accessibility for elderly residents and renters
- Suggested phone assistance and local help with applications
- Requested guidance for finding well completion reports and links to Self-Help
- Confusion about GSA boundaries (e.g., 'Will this cover La Vina?').
- Supported including cement pad and pump in coverage
- Recommended increasing funding limit to \$50,000
- Suggested showing remaining available funds and success stories to build trust



@MADERACOUNTY  
maderacounty.com





## Staff Recommendation

Consideration and recommendation to approve a resolution to adopt rules for Domestic Well Mitigation in the Madera Subbasin, Madera County GSA



@MADERACOUNTY  
maderacounty.com





## ITEM 4.d

Action Item: Consideration and recommendation to the Board of Directors to enter into a contract with Davids Engineering for management of Domestic Well Mitigation Program in 2026.



@MADERACOUNTY  
maderacounty.com



# Proposal for Program Manager

## **Task 1. Support Implementation of the Madera County GSA DWMP (\$314,204):**

Refinement of the Application and Application Process

Perform technical review of applicants' existing domestic well to determine eligibility

Coordinate new well construction with driller and landowner

## **Task 2. Support DWMP Public Outreach (\$143,488):**

Website Creation

Public Presentations for Public feedback

Various Outreach

## **Task 3. Complete Annual Report (\$16,204):**

Summary of actions taken during the year

Complete and transparent revenue and expenditures summary

Financial Forecasts

## **Task 4. Perform On-call Professional Services (\$40,000):**

Requests not specially mentioned in the proposal but are needed to implement the program.

**Total: NTE \$513,869**



@MADERACOUNTY  
maderacounty.com





## Staff Recommendation

Consideration and recommendation to the Board of Directors to enter into a contract with Davids Engineering for management of Domestic Well Mitigation Program in 2026



@MADERACOUNTY  
maderacounty.com





## Item 4.e

Action Item: Consideration and recommendation to the Board of Directors to enter into a contract with Hydrosat for satellite measurement of water use



@MADERACOUNTY  
maderacounty.com





## Background

At recent meetings on budgets, it has been requested to look for potential cost savings

Madera County GSA is the only GSA with multiple satellite measurements, which potentially could be condensed

Each measurement method has processing costs, which are considerable

The measurement method plus the processing is typically 300K



@MADERACOUNTY  
maderacounty.com





# Timeline

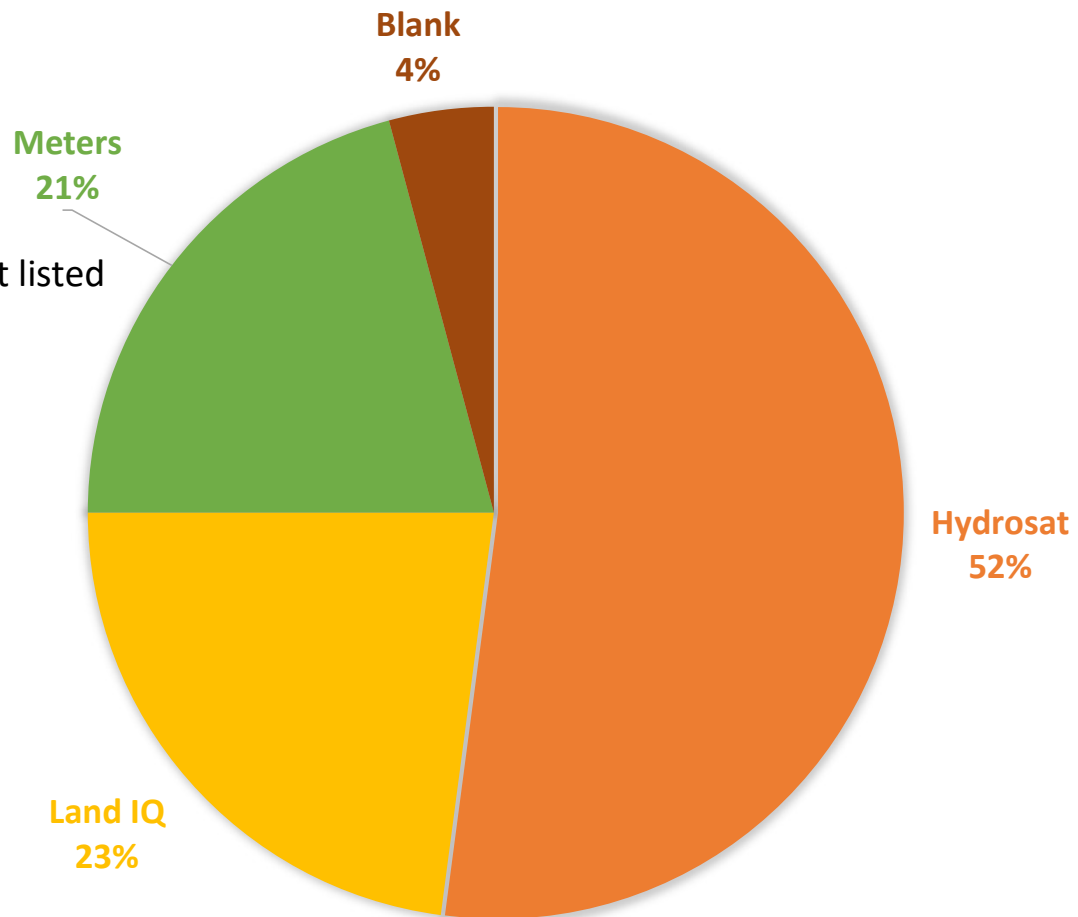
- May - Issued RFP for measurement method
- July - Public presentations at the GSA committee
  - Questions collected from growers after public presentations
  - Growers mailed questionnaires to select option
- September – Staff recommendation based on the grower questionnaire
- October – Update provided to GSA Committee
- November – Contract considered by GSA Committee
- Jan 1, 2026 – New contract starts



@MADERACOUNTY  
maderacounty.com



# Grower Questionnaire, Question #1



Meters were not listed  
as an option

WHAT IS YOUR PREFERRED SATELLITE MEASUREMENT METHOD?

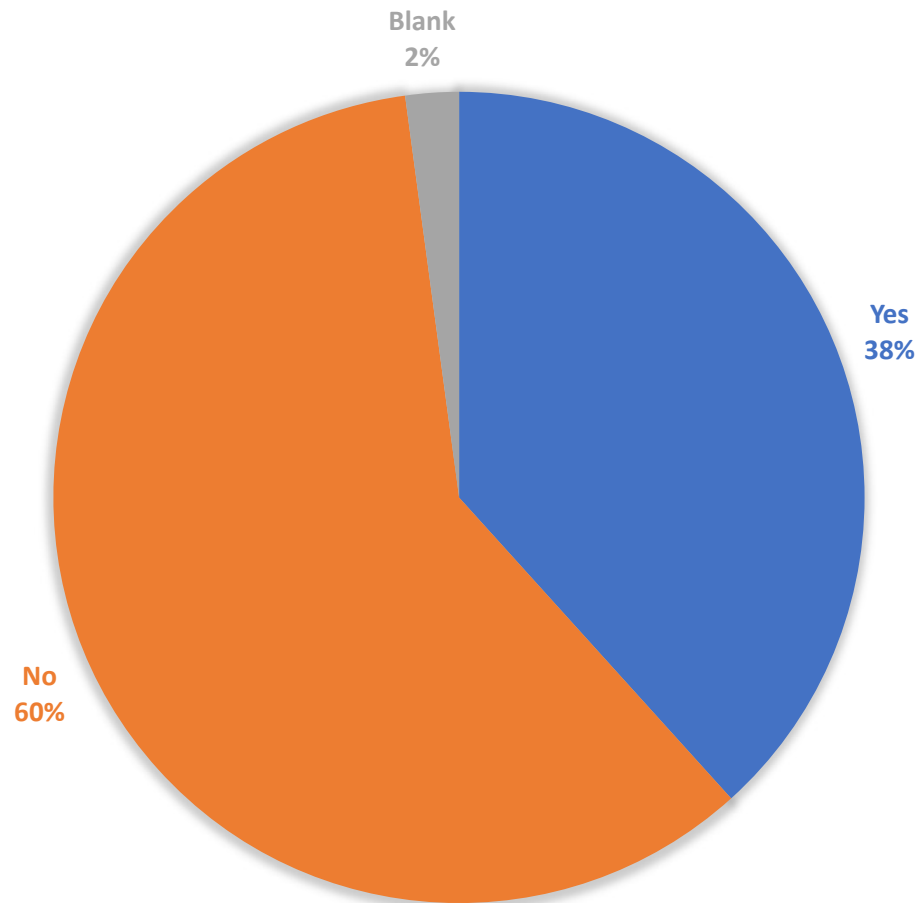


@MADERACOUNTY  
maderacounty.com





## Grower Questionnaire, Question #2

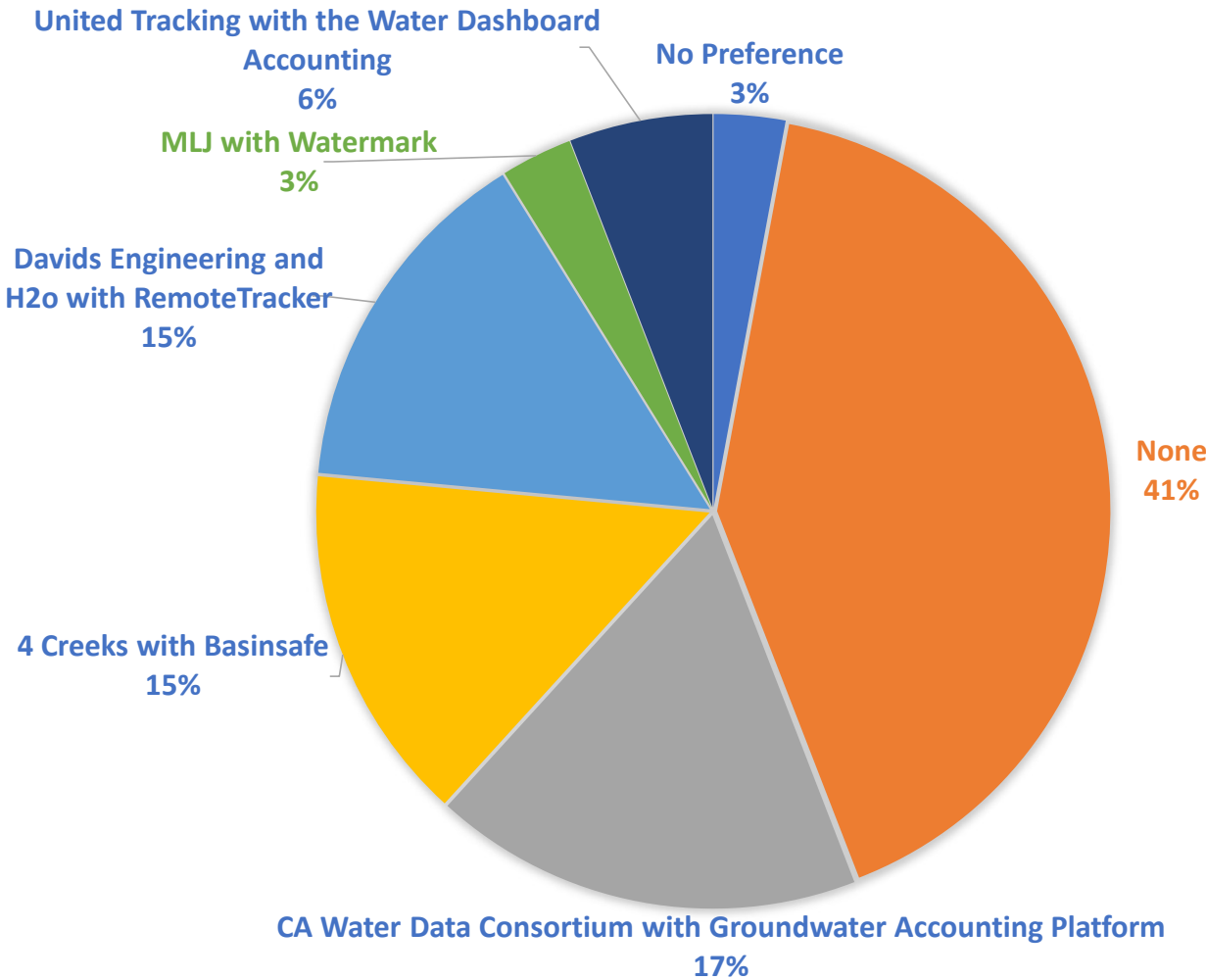


DO YOU SUPPORT MCGSA FUNDING MORE THAN ONE SATELLITE MEASUREMENT METHOD?



# Grower Questionnaire, Question #3

WHICH ACCOUNTING PLATFORM DO YOU PREFER?





## Staff Recommendation

Based on the measurement questionnaire, the staff recommendation is to ask the Board of Directors to enter into a three-year contract with Hydrosat for 2026-2028 in amount \$493,020.00



@MADERACOUNTY  
maderacounty.com





## ITEM 4.f

Informational Item: Well Driller Contract(s) for Domestic Well Mitigation in 2026



@MADERACOUNTY  
maderacounty.com



# RFQ

- Distributed on 10/16/25 – Closed on 11/4/25
- California Contractor with a C-57 license in good standing with the California Contractors State Licensing Board
- Experience with domestic water well design, drilling, and construction
- Over 5 years providing domestic well installation services
- Successful completion of 25 domestic wells in the last 5-years in and in the vicinity of the Madera Subbasin
- Knowledgeable of hydrogeologic conditions (static and pumping water levels, groundwater level trends) within the Madera Subbasin
- Ability to respond to requests in a timely manner



@MADERACOUNTY  
maderacounty.com





## Next Steps

- Review bids and select qualified contractors
- Enter into agreement(s) at a December or January Board meeting
- Begin domestic well drilling to eligible applicants in 2026



@MADERACOUNTY  
maderacounty.com





## ITEM 4.g

Informational Item: Prop 68 funded contracts with landowners related to recharge



@MADERACOUNTY  
maderacounty.com





## Background

- This presentation is focused on the Chowchilla/Eastside bypass grant-funded recharge
- Projects were chosen based on having existing planning work already completed and were in the County GSA's survey of interested acres for recharge
- Prop 68 has two rounds of funding:
  - Chowchilla 1: Madera County is the grantee in Round 1
  - Chowchilla 2: Triangle T is the grantee in Round 2 (with one project for Madera County)



@MADERACOUNTY  
maderacounty.com

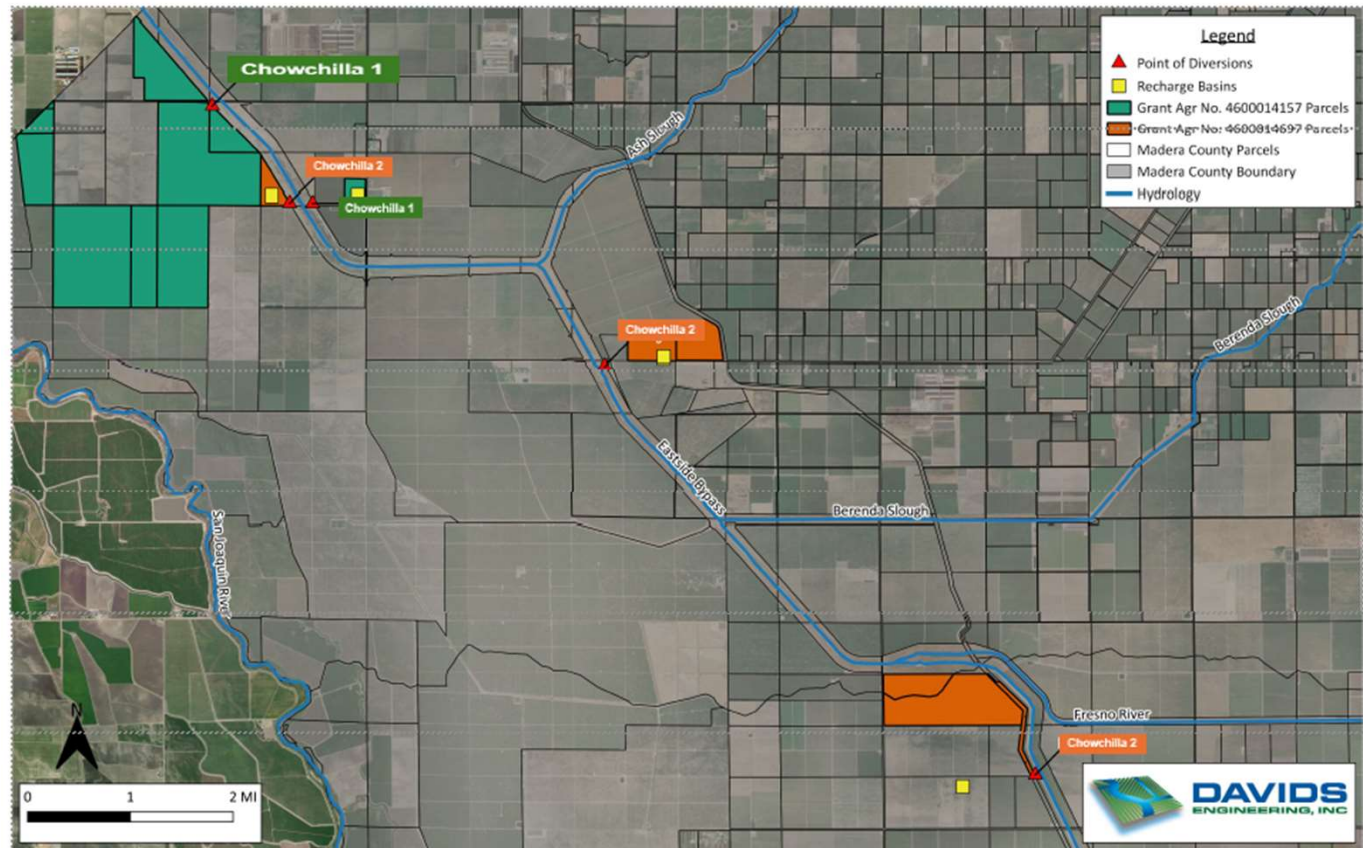




@MADERACOUNTY  
maderacounty.com



# Prop 68 – Chowchilla 1 & Chowchilla 2





# Landowner Agreements

- Grant-funded recharge projects have responsibilities divided among both parties
- Costs are shared and benefits are shared
- Basins are built by landowners and on private land
- Madera County GSA retains
  - ownership of facilities (not the basin)
  - oversight responsibilities, ensuring that operations align with project goals and grant requirements.
  - monitoring and reporting responsibilities



@MADERACOUNTY  
maderacounty.com





## Next Steps

- Landowner agreements are being finalized with county counsel
- Construction contract for Prop 68 Chow 1 and part of 2 is out to bid
- Prop 68 Chowchilla 1 grant ends March 31, 2026 so time is of the essence
- Landowner agreements and/or construction contract may go to the board of directors in December or January



@MADERACOUNTY  
maderacounty.com





## ITEM 4.h

Informational Item: Prop 68 Chowchilla 1 Construction



@MADERACOUNTY  
maderacounty.com





@MADERACOUNTY  
maderacounty.com



# Construction Bid Process

Three construction projects will be bid together

Task and Item	Time
Post Project in the Newspaper	2 - Weeks
Post in BidExpress for Public Advertising	15 to 20 Days
Pre-Bid Meeting - On site.	1- day
Set date for questions and response time	1 - week before bid is due
Public Bid Opening	1- day
Bid Protest Period	5- days
Contract to County Counsel	Up to 2 weeks
Notice of intent to award - Collect Bonds & Insurance as well as arrange the contract details	Up to 14 days
Create Board Packet and get item on Agenda - County Counsel signature, Contractor signatures	7-days - 2-weeks prior to Board Of Directors meeting
County Board meeting for Bid Award	1 - day
Preconstruction Conferences (After execution of Contract, Prior to commencement of work)	1-day



# Construction Agreements

After formal bid process – Contracts will be secured for:

- Construction of a total of five points of diversion from the Chowchilla/Eastside Bypass
- Construction of facilities to deliver water to approximately 900 acres of existing agricultural land for Flood-MAR
- Construction of 2 grower turnouts
- Installation of approximately one dual completion monitoring well.
- Already completed are two dedicated groundwater recharge basins



@MADERACOUNTY  
maderacounty.com





## Next Steps

- Waiting for the “Go Ahead” from DWR to begin the bid process
- Begin the Bid Process
- Prop 68 Chowchilla 1 grant ends March 31, 2026, so time is of the essence
- Landowner agreements and/or construction contract may go to the board of directors in December or January



@MADERACOUNTY  
maderacounty.com





## ITEM 4.i

# Demand Management Policy Options

Informational Item: Demand Management Policy Options  
Moving Ahead



@MADERACOUNTY  
maderacounty.com





## Existing Allocation Timeline

2020 – Allocation principles adopted by Advisory Committee and Board of Directors

2021 – Allocations and refinements adopted by Board of Directors

2022 – Allocations in place (“dry run”)

2023 – Allocations in place with penalty (\$100/AF over farm unit allocation)

2024 – Allocations in place with penalty (\$200/AF over farm unit allocation)

2025 – Allocations in place with penalty (\$300/AF over farm unit allocation)



@MADERACOUNTY  
maderacounty.com



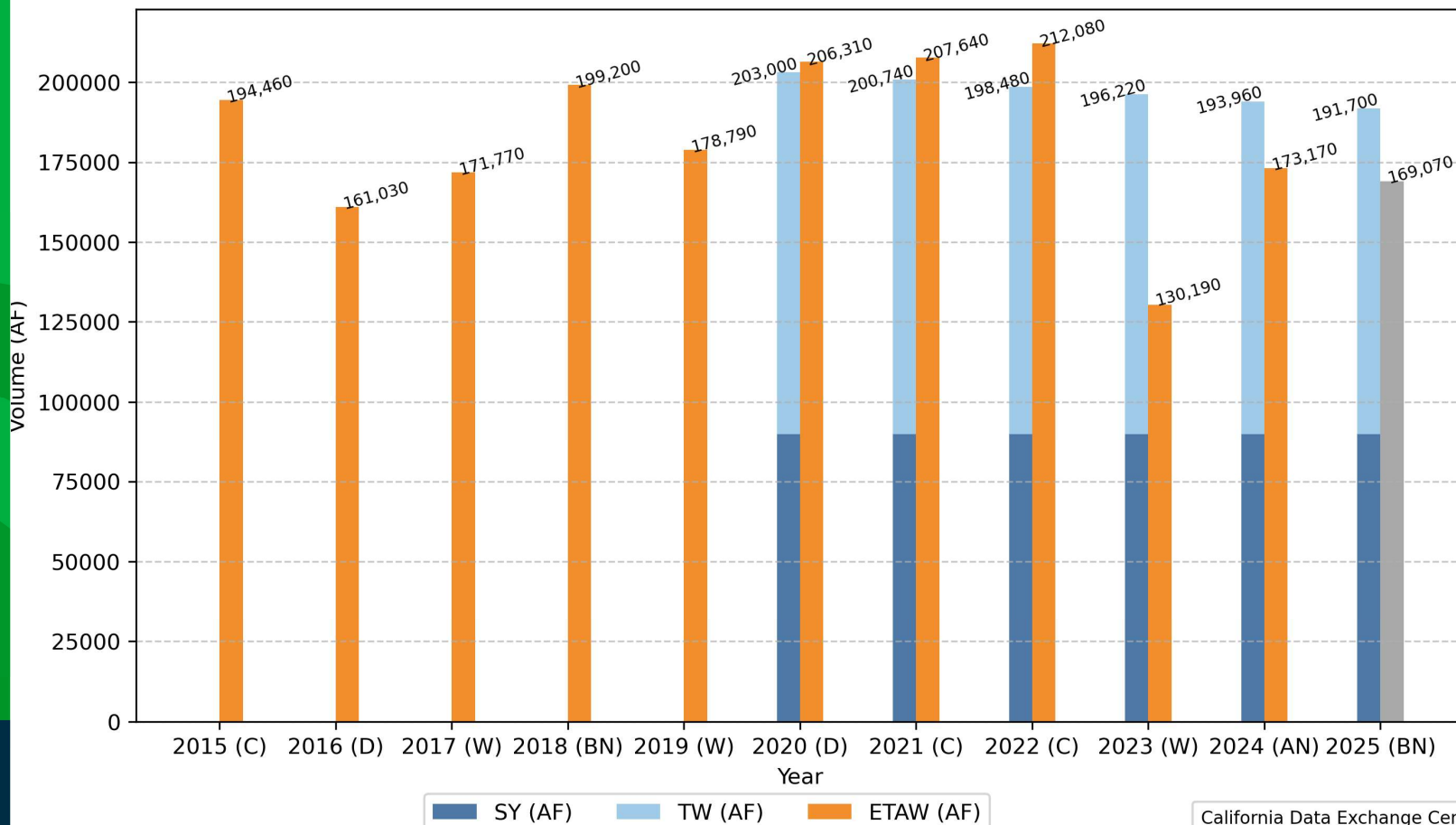


@MADERACOUNTY  
maderacounty.com



## Madera County GSAs Madera Subbasin Volume (AF) per year (2020-2025)

2025 Data is Cumulative Through August 31, 2025



This analysis is based on a total geometric acreage of 88,250 AC for the Madera Subbasin for all years.  
Note: Consumptive use of applied surface water data has been excluded from this ETAW analysis if the data has been provided.  
Note: The 2025 water year index is preliminary index and has not been officialized.

California Data Exchange Center  
San Joaquin Valley Water Year Index

- Wet (W)
- Above Normal (AN)
- Below Normal (BN)
- Dry (D)
- Critical (C)

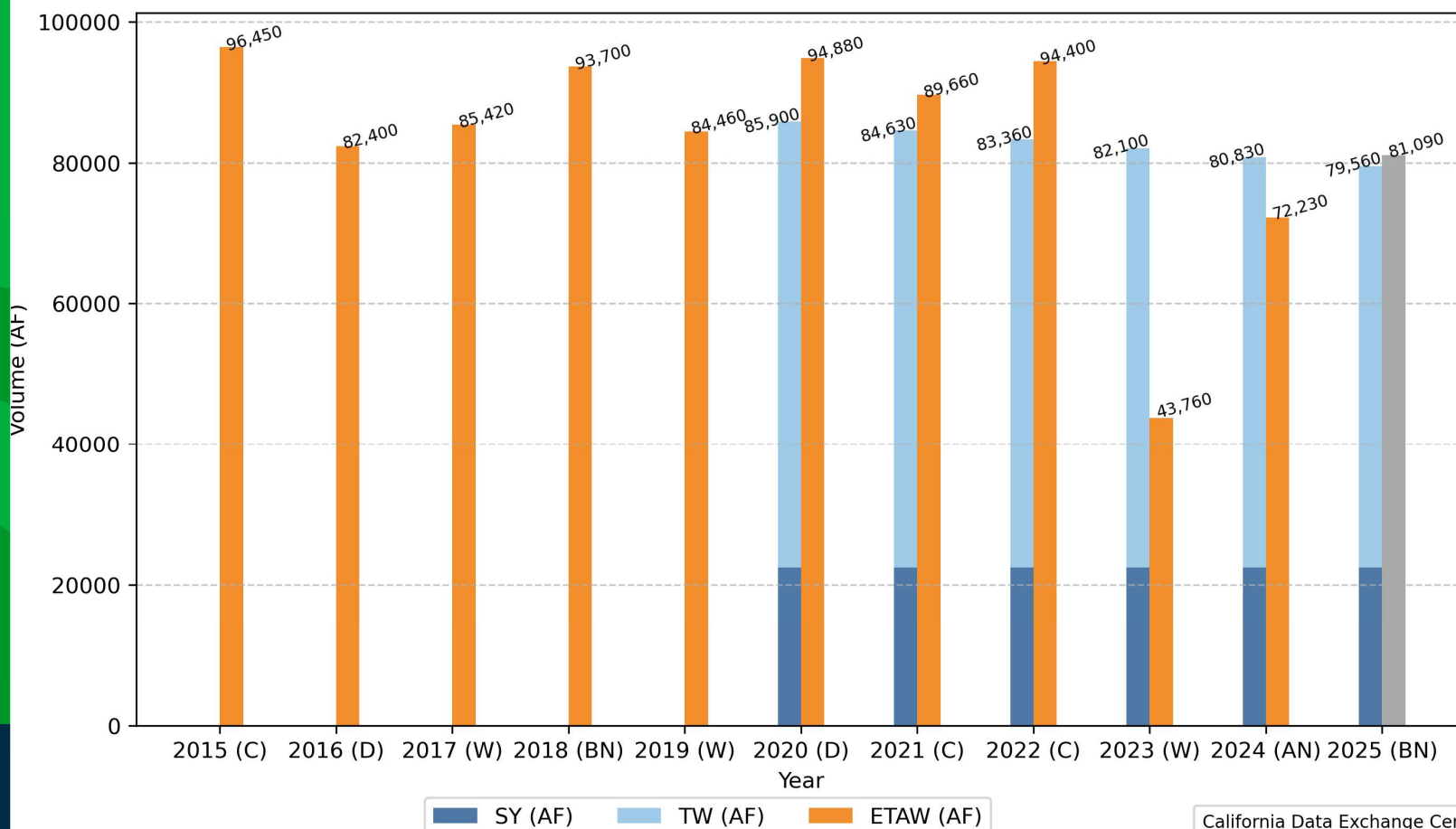


@MADERACOUNTY  
maderacounty.com



## Madera County GSAs Chowchilla Subbasin Volume (AF) per year (2020-2025)

2025 Data is Cumulative Through August 31, 2025



This analysis is based on a total geometric acreage of 38,100 AC for the Chowchilla Subbasin for all years.  
Note: Consumptive use of applied surface water has been excluded from this ETAW analysis if the data has been provided.  
Note: The 2025 water year index is preliminary index and has not been officialized.

California Data Exchange Center  
San Joaquin Valley Water Year Index

- Wet (W)
- Above Normal (AN)
- Below Normal (BN)
- Dry (D)
- Critical (C)



## Survey Summary

In a summary of comparable agencies with allocations, these ideas are already implemented:

	Madera County GSA	Merced Subbasin GSA	North Fork Kings GSA	Eastern Tule GSA	Eastern Kaweah GSA	Greater Kaweah GSA	Lower Tule River Irrigation District GSA
<b>Penalties for Allocations</b>	Starts at \$100/AF for 2023, increases to \$500/AF by 2027, with an additional \$1000/farm unit penalty in Chowchilla Subbasin	\$500/AF + \$1000 + \$100/day; repeated violations may trigger additional restrictions	In process (allocation without penalties in 2026)	Penalties vary by year; \$392/AF in 2025 for Tier 1 (anything beyond SY) and \$500/AF for Tier 2	Yes; \$500/AF with a one-to-one loss in the following year allocations	Tier 3 is \$500/AF plus loss of that amount of water from the following years allocation	\$500/AF over an allocation, plus a consumption charge (buying an alternative supply)
<b>Allocation Zones</b>	Allocations differ depending on subbasin zones	Yes, 8 zones; allocations are the same across all zones currently	In process	Land Subsidence Management Zone on Friant-Kern Canal (AF reduced depending on location)	No	No; may establish management areas soon to discourage lower aquifer pumping	No; may establish subsidence zones soon
<b>Carryover Rules</b>	No expiration; no decay	No decay; recharge credits decay after five years	In process, but discussed 2-year limit	Carryover expires in five years	Only native allocation can carryover; carryover expires in five years	Carryover expires in five years if paid for originally in the year it was allocated	No decay; order of water used by priority determined by GSA (Precipitation, SY, recharge, TW)
<b>Number of Measurement Methods</b>	Hydrosat, LandIQ, private meter, with an option to appeal	OpenET, private party monthly satellite measurements; monthly meter data	Land IQ with ability to dispute with meter data (appeal)	Land IQ; meter data to appeal; special requirements in subsidence zone for metering	Land IQ; opt-in process for meters with substantial rules	Land IQ; opt-in process for meters with substantial rules	Land IQ; meter or other measurement for appeal
<b>Small Farm Rules</b>	No	No	Potentially, in process	No	No	No	No

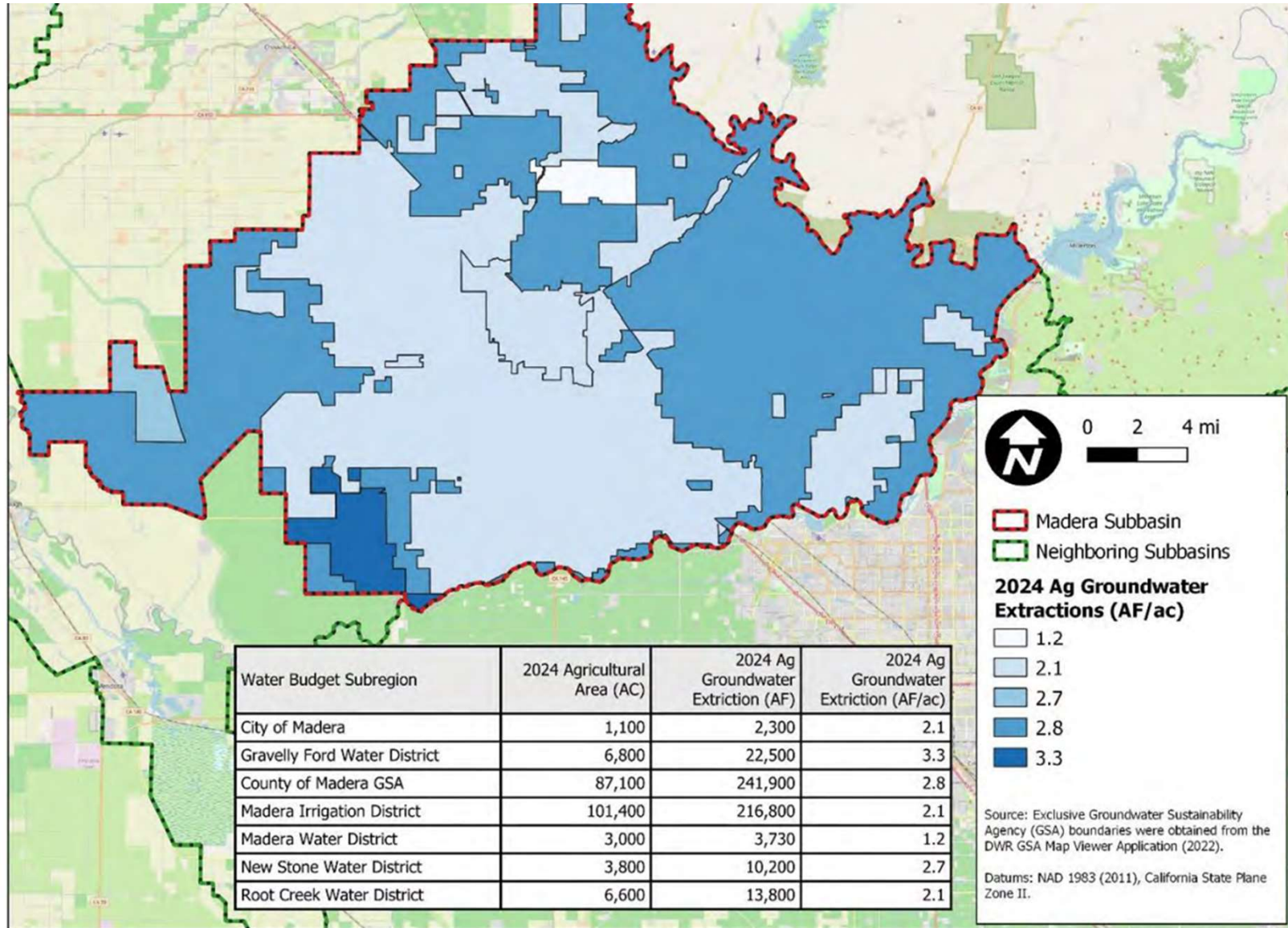


@MADERACOUNTY  
maderacounty.com



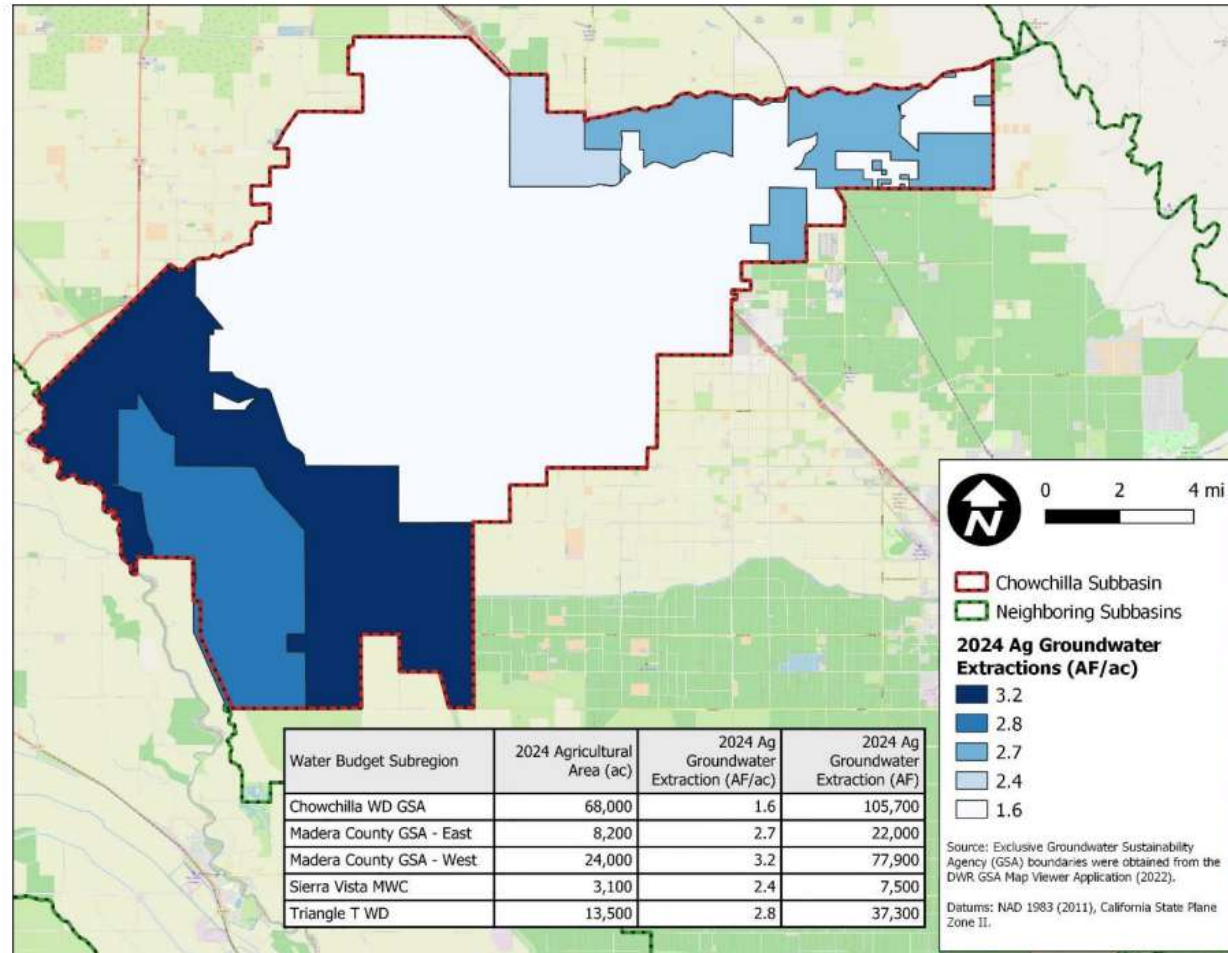


@MADERACOUNTY  
maderacounty.com



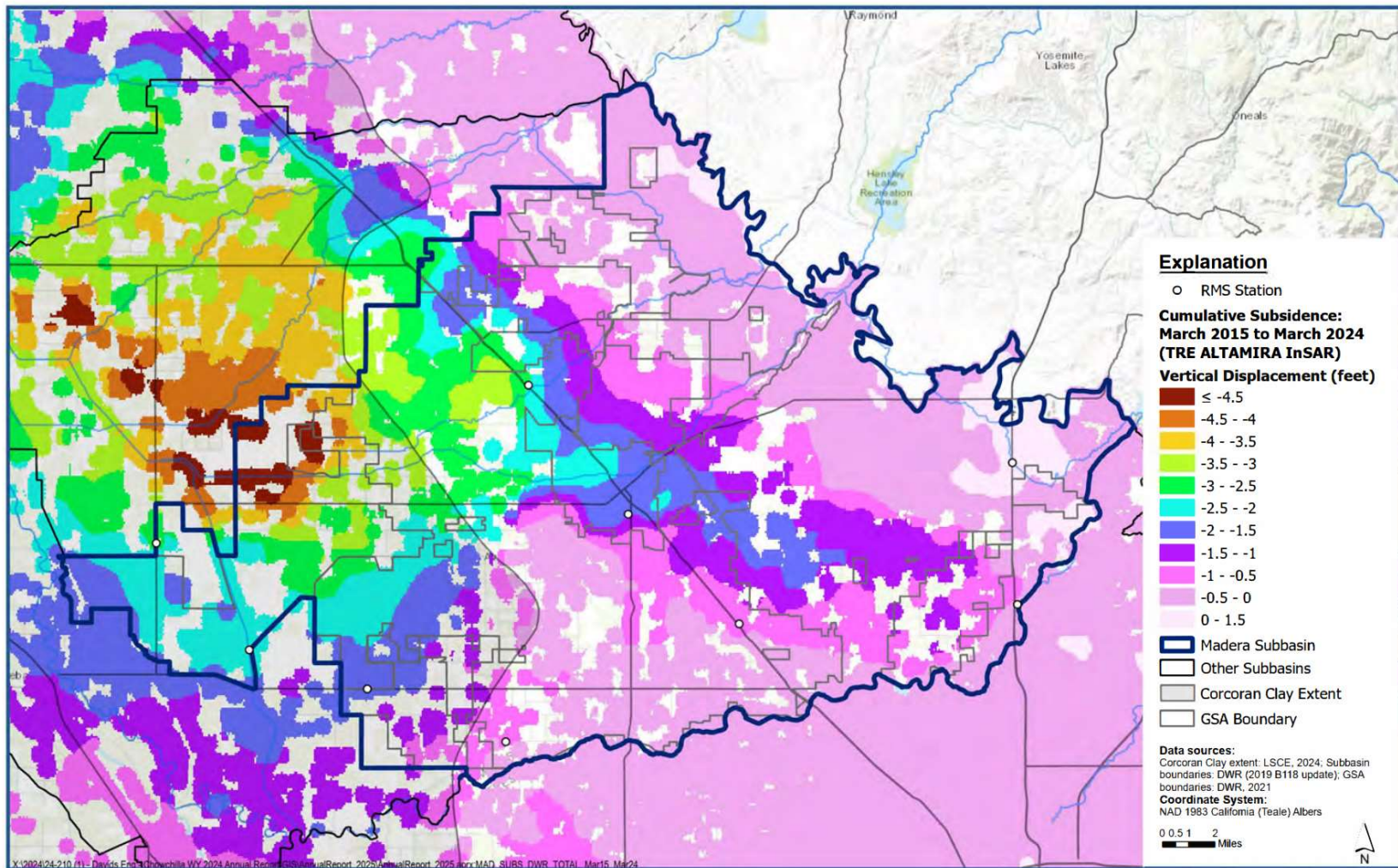


@MADERACOUNTY  
maderacounty.com



**Figure 3-1. Agricultural Groundwater Extraction, by Subregion.\***

*\*Area and volumes rounded.*



**Cumulative Subsidence: March 2015 through March 2024  
(TRE ALTAMIRA InSAR)**

Madera Subbasin  
Groundwater Sustainability Plan 2025 Annual Report

**Figure D-11**



@MADERACOUNTY  
maderacounty.com



## Next Steps



Wait for year end and with release of subsidence guidance from DWR



Analyze guidance



Continue to meet with Chowchilla GSP Advisory Committee as measures for demand reduction are refined



Consider “surgical” precision in terms of additional restrictions



Encourage others to use allocations



## ITEM 4.j

Informational Item: Joint Power Authority Agreement in the Madera County GSA Delta-Mendota Subbasin for overall governance

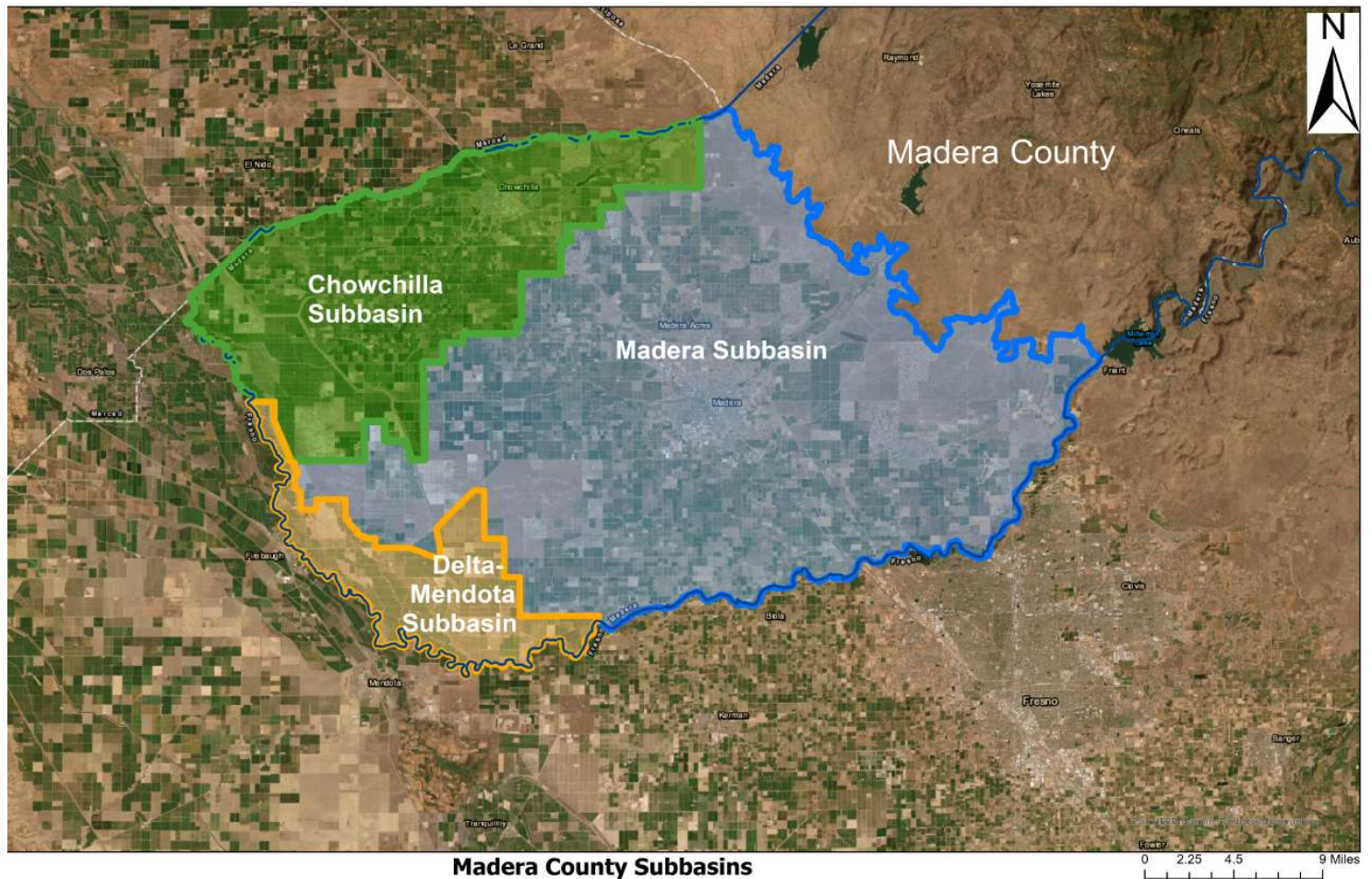


@MADERACOUNTY  
maderacounty.com





## Delta-Mendota Background



@MADERACOUNTY  
maderacounty.com





# Delta-Mendota Subbasin Joint Powers Authority(JPA)

## Background

- The 2024 GSP is currently under review by the State Water Resources Control Board (SWRCB)
- The DM Coordination Committee is actively updating the 2024 GSP and completing other related activities with the assistance of fiscal, contracting, and administrative services from the San Luis & Delta-Mendota Water Authority (SLDMWA)

## Moving Ahead

- As of March 1, 2026, SLDMWA will no longer provide fiscal, contracting, and administrative services
- The JPA will replace the current Coordination Committee and take over SLDMWA's role
- Coordination Committee has requested all 23 GSAs to adopt the JPA



@MADERACOUNTY  
maderacounty.com





## Powers of New JPA

- (a) To make and enter into contracts;
- (b) To employ consultants, agents and employees;
- (c) To acquire, lease, own, construct, manage, maintain, operate, and dispose of any building, works or improvements;
- (d) To acquire, hold or dispose of real or personal property;
- (e) To incur debts, liabilities, or obligations;
- (f) To sue and be sued in its own name;
- (g) To undertake, on behalf of the Members, administrative or ministerial actions required by DWR and the State Water Board under SGMA;
- (h) To conduct research and investigations and compile appropriate reports for implementing the single GSP for the Subbasin, as it may be amended or revised from time to time;
- (i) To cooperate, act in conjunction with, and contract with the United States, the State of California or any agency thereof, Counties, Cities, and other local agencies;
- (j) To enter into grant agreements consistent with the purposes of the Authority described herein;
- (k) To enter into Special Project Agreements with a Member or Members for the benefit of implementing the SGMA in the Subbasin;
- (l) To participate, on behalf of one or more GSAs, in groundwater sustainability projects and management actions related to SGMA; and
- (m) To create committees and sub-committees.



@MADERACOUNTY  
maderacounty.com





## Next Steps

- No action needed at this time
- In discussion with Delta-Mendota Subbasin
- Item may go to a Board meeting for approval in December 2025, or January 2026



@MADERACOUNTY  
maderacounty.com

