



**WATER & NATURAL RESOURCES  
NEWS FOR GROWERS  
IN THE MADERA COUNTY GSAs**

**January 2026**

---



---

**COUNTY GSA COMMITTEE MEETING**

---

Due to audio and visual renovations in the Board Chambers, the first Madera County GSA Committee meeting in 2026 will be held on:

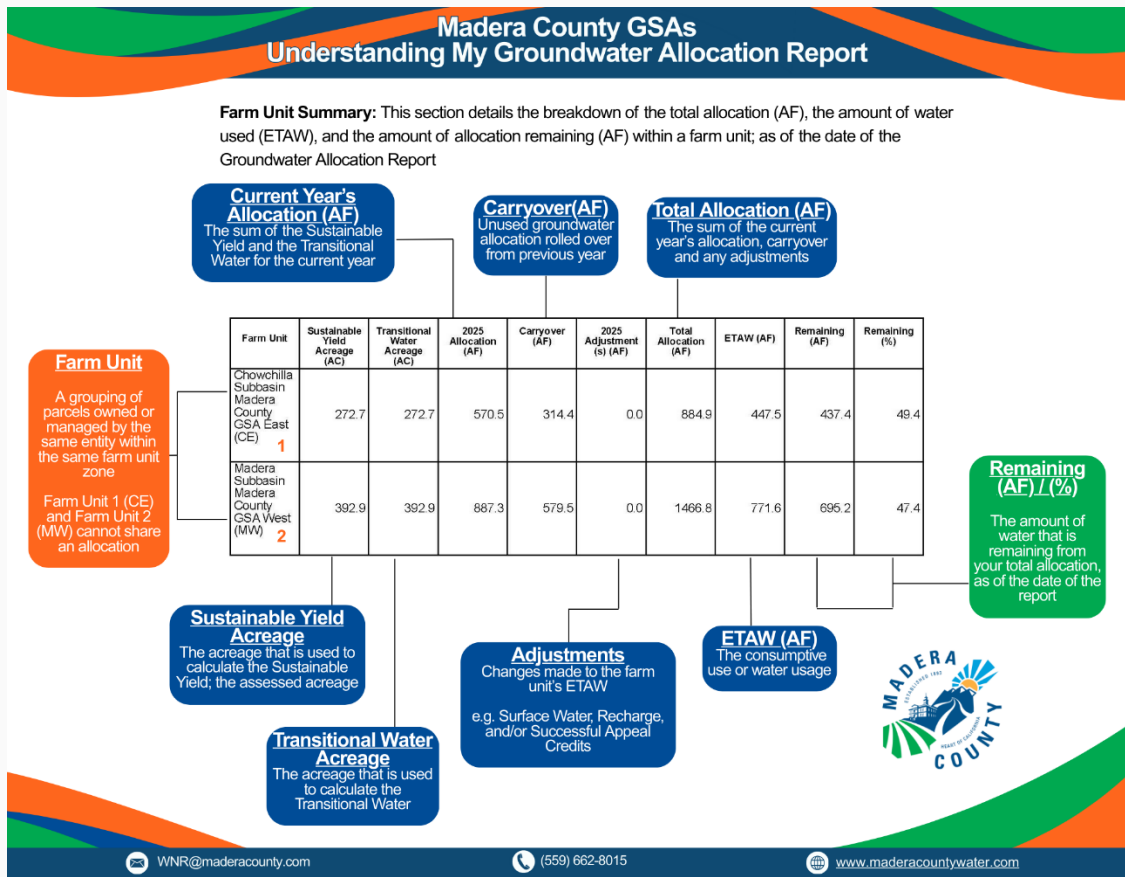
**Tuesday, February 03, 2026 at 1:30 PM.**

Madera County GSA Committee meeting recordings and agenda packets can be viewed on the [County GSA Committee](#) webpage.

Information can also be found on the [Board meeting portal](#).

## FAQ RESOURCES

# Understanding My Groundwater Allocation Report



## Madera County GSAs Understanding My Groundwater Allocation Report

**Farm Unit Parcel Summary:** This section is a breakdown of the total allocation (AF), the amount of water used (ETAW), and the amount of allocation remaining (AF) by parcels within the farm unit; as of the date of the Groundwater Allocation Report

Farm Unit	Sustainable Yield Acreage (AC)	Transitional Water Acreage (AC)	2025 Allocation (AF)	Carryover (AF)	2025 Adjustment (s) (AF)	Total Allocation (AF)	ETAW (AF)	Remaining (AF)	Remaining (%)
<div style="border: 1px solid black; padding: 5px; display: inline-block;"> <b>Farm Unit Summary</b> Farm Unit 1         </div>	272.7	272.7	570.5	314.4	0.0	884.9	447.5	437.4	49.4
<div style="border: 1px solid black; padding: 5px; display: inline-block;"> <b>Farm Unit Parcel Summary</b> The parcels that are within Farm Unit 1         </div>									

The columns reflect the same data as the farm unit summary section but is broken down to show each individual parcel's data



WNR@maderacounty.com



(559) 662-8015



www.maderacountywater.com

**Please click on images to see full document.**  
For more information, visit our [allocations](#) webpage.

## MEASUREMENT

### **Save the Date!** **Hydrosat (Irriwatch) Workshop**

To learn more about the Hydrosat (Irriwatch) measurement method there will be an online workshop on:

**Thursday, February 12, 2026 at 11:00 AM.**

Please reach out to your Water Resource Specialist for more information.

---

## Appeal Requirements

If you plan to appeal your 2025 water use,  
please click the link to review the requirements and process:  
[Evapotranspiration of Applied Water Appeal Process](#).

---

## INFORMATIONAL RESOURCES

---

# Professional Agave Training California



Learn more and strengthen your skills in agave cultivation

Agave as  
unique in the  
whole plant  
world



5, Feb

Soil Health and  
Regenerative  
Agriculture



12, Feb

Crop  
Establishment  
and Field  
Monitoring



19, Feb

Propagation,  
Pruning &  
Integrated Pest  
Management



26, Feb

**FIELD DAY PRACTICE 27, 28, Feb**

Registration fee: USD 150  
Scholarship opportunities available

UNIVERSITY OF CALIFORNIA  
Agriculture and Natural Resources

MADERA  
COMMUNITY  
COLLEGE

UC DAVIS  
WATER  
MANAGEMENT  
LAB



Zoom  
Madera Community College

Please reach out to Angel Reyna [angel.reyna@maderacollege.edu](mailto:angel.reyna@maderacollege.edu) for more information on how to register.

**FRESNO STATE**

Jordan College of Agricultural  
Sciences and Technology

## Smart Farm University Project

### Flowing into the New Season

Free educational workshop series on farm: irrigation systems, pH balancing, and NRCS programs.

**January 09:**  
*Revisiting Irrigation Systems*

**January 16:**  
*Balancing Irrigation pH*

**January 30:**  
*USDA | NRCS Programs*

**UNIVERSITY OF CALIFORNIA**  
Agriculture and Natural Resources



Attend In-Person  
or Online;

Click or Scan the  
QR code to Register.



Juan Jose Rodriguez; Project Coordinator 559-278-4860

[Click Here to Register](#)

[Flyer in Spanish](#)

[Flyer in Punjabi](#)

# IRRIGATION AND NUTRIENT MANAGEMENT WORKSHOPS



**JANUARY 20TH, 2026**

8:45-11:00 A.M

MADERA COUNTY FARM  
BUREAU 1102 S PINE ST  
MADERA, CA 93637

**TO REGISTER:**

**CONTACT OR SCAN QR CODE:**

KEVIN REYES (559) 755-5148  
PROGRAMS@MADERACHOWCHILLARCD.ORG

  
**American Farmland Trust**  
SAVING THE LAND THAT SUSTAINS US

  
**UC DAVIS**  
UNIVERSITY OF CALIFORNIA

  
**HORTAU**

  
MADERA/CHOWCHILLA  
RESOURCE  
CONSERVATION  
DISTRICT

  
california  
almonds  
Almond Board of California



  
#NOREGRET  
Initiative

  
NRCS  
Natural  
Resources  
Conservation  
Service

## TOPICS INCLUDE:

- CONSERVATION PLANNING
  - GROUNDWATER MANAGEMENT
  - IRRIGATION DATA & SCHEDULING
  - MAINTENANCE FOR EFFICIENCY
- PENDING CCA & CDFA INMP  
CREDITS!

The Madera/Chowchilla RCD is hosting an Irrigation & Nutrient Management Workshop on **Tuesday, January 20th, 2026, from 8:45 A.M-11:00 A.M.**

Please click the flyer or scan the QR code to register.

Visit the [Madera/Chowchilla Resource Conservation District](https://www.maderachowchillarcddistrict.org/) website for more information.

[Click Here to Register](#)



**UCDAVIS**

The Agricultural Water Center at UC Davis is conducting a research survey to understand current perspectives and decision-making related to **winter cover cropping in California pistachio orchards**. We are inviting growers, farm managers, and crop advisors/consultants to participate.

The survey is **anonymous**, **voluntary**, and takes **about 15–20 minutes** to complete. Results will help support future research and outreach efforts in the pistachio industry.

**Please scan or click the QR code below to begin the survey:**



[Click Here to Begin Survey](#)

---

**FALLOW FIELD VISITS**

Did you know if your field is fallow (for the full calendar year), we can zero it out to make sure ETAW is not picked up?

Please reach out to your Water Resources Specialist.

---

## CONTACT US

For questions, please contact your Water Resources Specialist directly, call us at (559) 662-8015, email [ETmeasurement@maderacounty.com](mailto:ETmeasurement@maderacounty.com), visit our [website](#), or [schedule an appointment](#).

---



---

*Madera County Water & Natural Resources, 200 West 4th Street, Suite 3100, Madera, CA 93637  
Phone: 559-662-8015.*

Want to change how you receive these emails?  
You can [update your preferences](#) or [unsubscribe from this list](#).