



## Item 4b

Action Item: Consideration of approval of Request for Transfer of Appropriations NO.25-098, in the amount of \$122,565, transfer from the Appropriation for Contingency Account to the Refunds and Reimbursements Account, for Fiscal Year 2025-2026.



@MADERACOUNTY  
maderacounty.com





# Purpose of Transfer

Supports two payment actions related to 2024 groundwater overuse penalties under the Madera County GSA allocation program in the Madera and Chowchilla Subbasins.

The total amount to be moved into the Refunds and Reimbursements account is \$122,565, consisting of:

- \$107,665 for 2024 penalties collected through the December 2025 tax roll that are pending transfer to Chowchilla Water District
- \$14,900 for a refund to one master account after approved surface water credits determined that a 2024 groundwater overuse penalty no longer applied



@MADERACOUNTY  
maderacounty.com





# Process of Transfer

**Refunds and Reimbursement** account in the GSA Adm. Fee Budget is used for Refunds and Reimbursements

Transfer of Appropriation No. 25-098 moves \$122,565 from:  
Appropriation for Contingency → Refunds & Reimbursements

Separate payments to the master account and to Chowchilla Water District can then occur

This action does not increase the overall budget.



@MADERACOUNTY  
maderacounty.com





# Staff Recommendation

Approve Transfer of Appropriation No. 25-098 in the amount of \$122,565 transferring funds from the Appropriation for Contingency account to the Refunds and Reimbursements account.



@MADERACOUNTY  
maderacounty.com





## Item 4c

Informational Item: Review Madera and Chowchilla Annual Report Highlights.



@MADERACOUNTY  
maderacounty.com



A large-scale construction site under a clear blue sky. In the foreground, a tall, rectangular concrete structure is being built using a grid of rebar. Three workers in high-visibility clothing (one in bright green, one in yellow, and one in orange) are positioned on top of the structure. A red vertical pipe or rod extends from the top. The background shows a vast, flat, sandy or dirt-covered area with some distant structures and a green field on the horizon.

# Madera County GSA *GSA Committee Meeting* *Water Year 2025 Annual Reports*

April 7, 2026

# Agenda

- SGMA Overview
- Groundwater Contours
- Groundwater Level Change
- Groundwater Storage Change
- Land Subsidence
- Water Year (WY) 2025 Surface Water System Water Budget
- Groundwater Sustainability Agency (GSA) Projects and Management Actions Summary



## Madera Subbasin Annual Report

Water Year 2025

April 2026



PROVOST & PRITCHARD  
CONSULTING GROUP



### PREPARED FOR

City of Madera GSA  
County of Madera GSA - Madera Subbasin  
Gravelly Ford Water District GSA  
Madera Irrigation District GSA  
Madera Water District GSA  
New Stone Water District GSA  
Root Creek Water District GSA

### PREPARED BY

Dauids Engineering, Inc.  
Luhdorff & Scalmanini Consulting Engineers  
Provost & Pritchard Consulting Group  
QK, Inc.



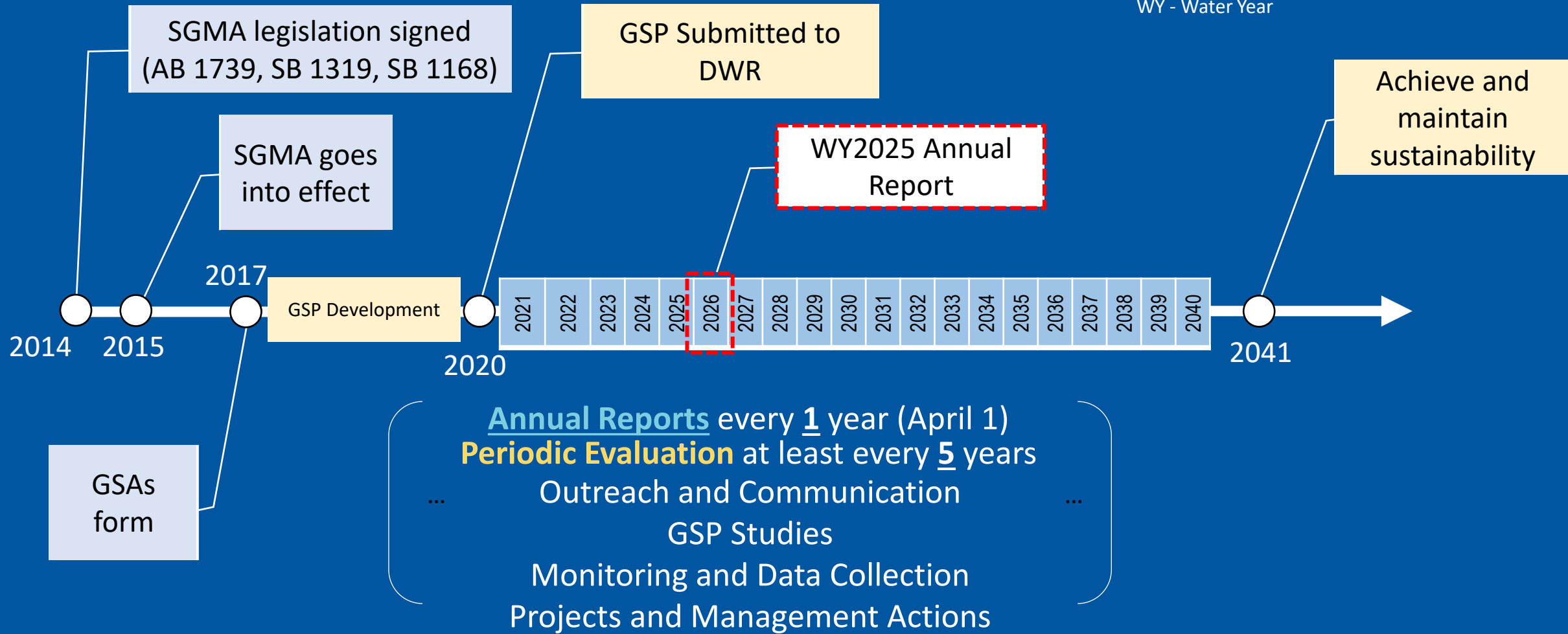
## CHOWCHILLA SUBBASIN ANNUAL REPORT

APRIL 2026

Prepared By  
Dauids Engineering, Inc.  
Luhdorff & Scalmanini

# SGMA Overview

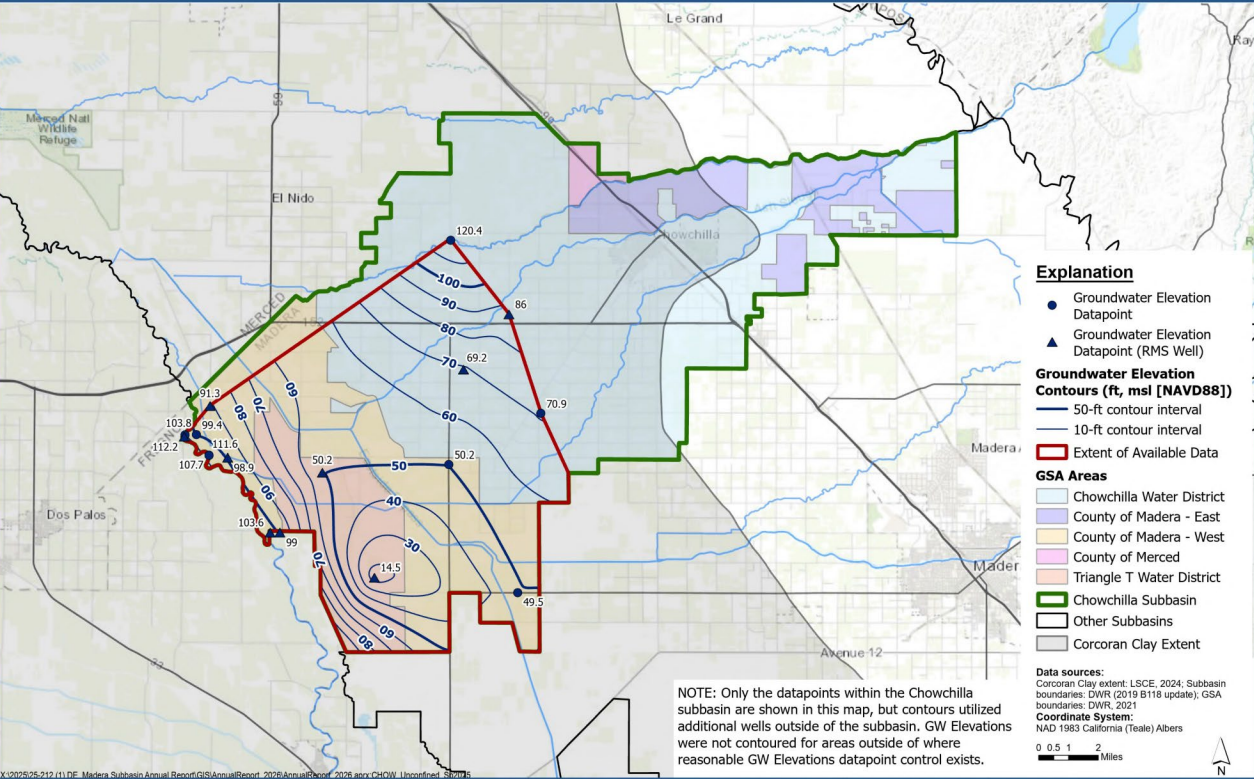
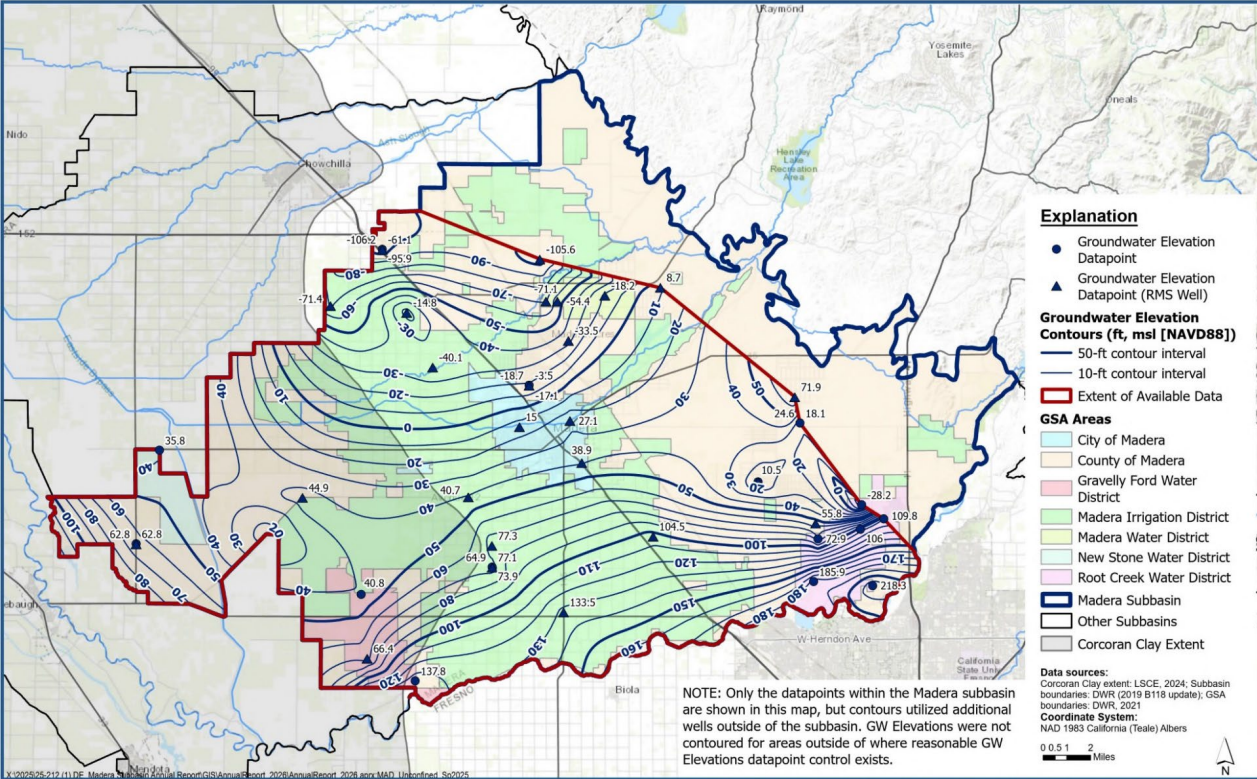
Abbreviations:  
 AB - Assembly Bill  
 DWR - Department of Water Resources  
 GSA - Groundwater Sustainability Agency  
 GSP - Groundwater Sustainability Plan  
 SB - Senate Bill  
 SGMA - Sustainable Groundwater Management Act  
 WY - Water Year



# SGMA Overview Cont.....

- California Code of Regulations Title 23 (23 CCR) §356.2 requires that annual reports be submitted to DWR by April 1 of each year following the adoption of the GSP
- Annual Report shall include the following general components for the preceding WY:
  - Surface Water System Water Budget
  - GSA Project Summary
  - Groundwater Conditions

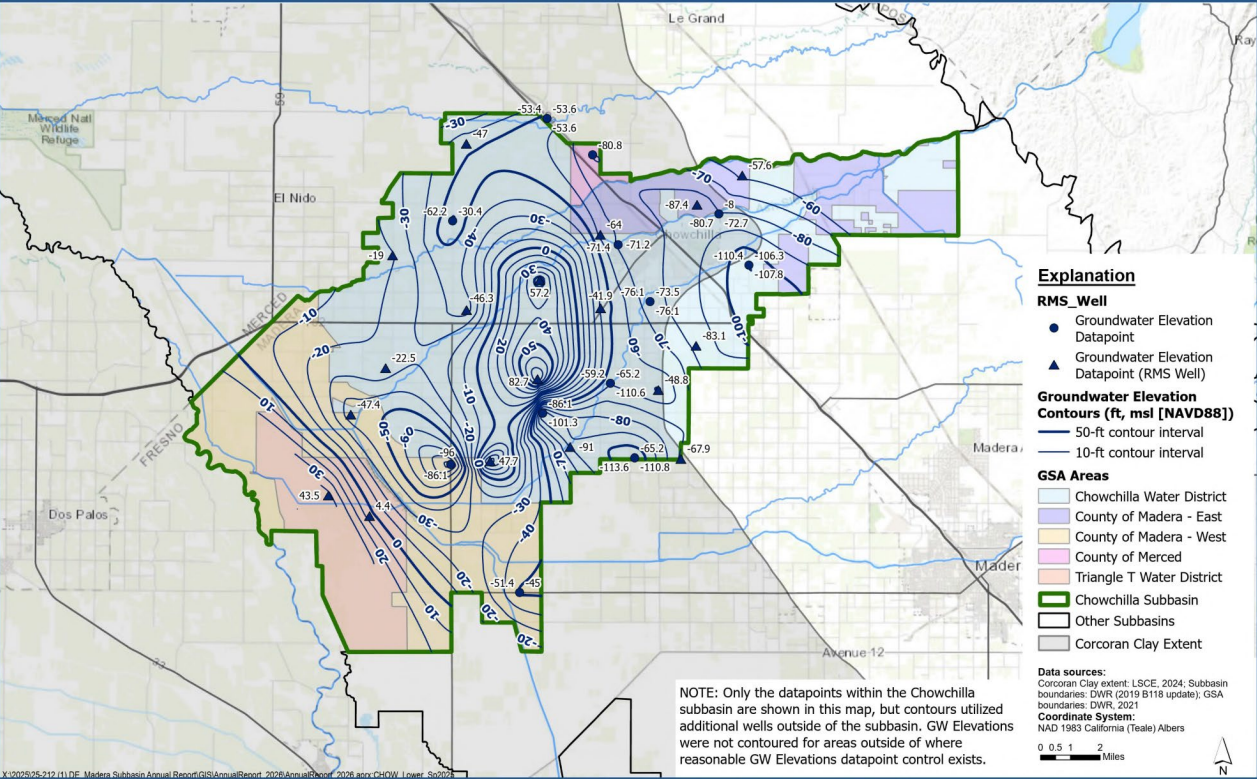
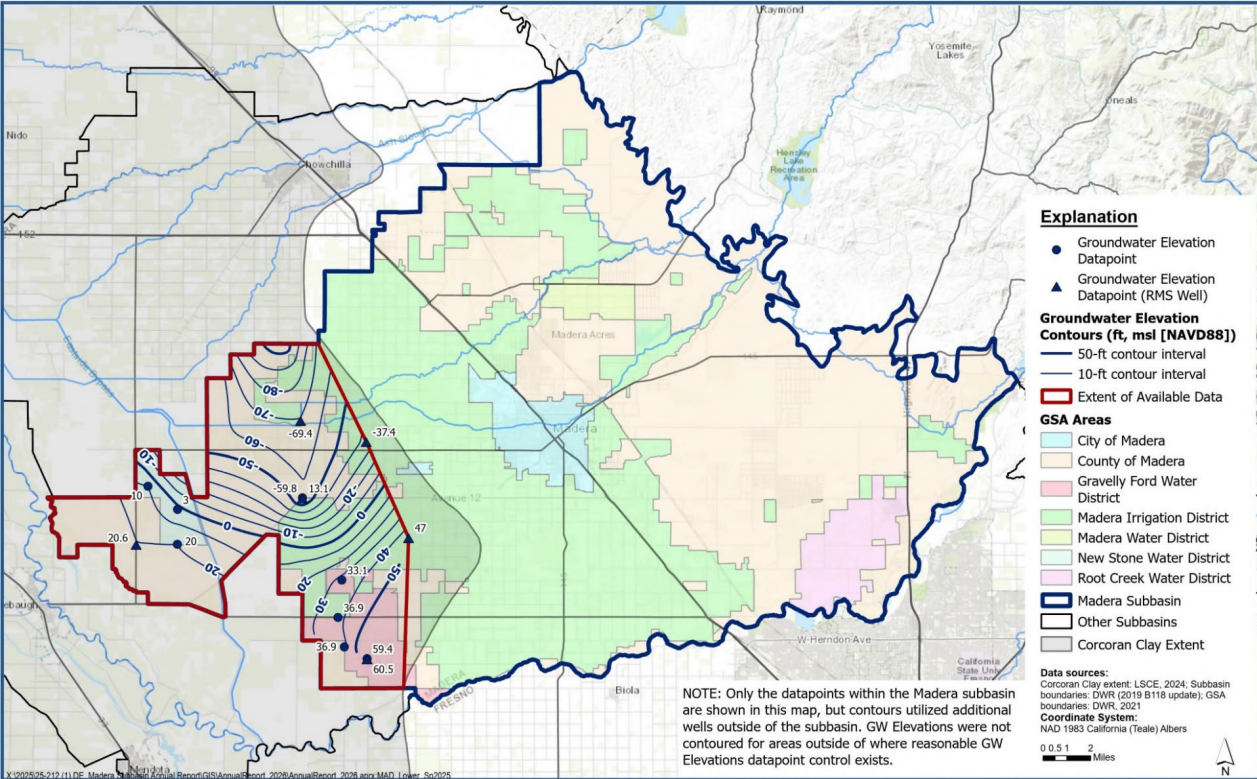
# Groundwater Contours - Spring 2025 GW Contours



Upper Aquifer, Madera Subbasin

Upper Aquifer, Chowchilla Subbasin

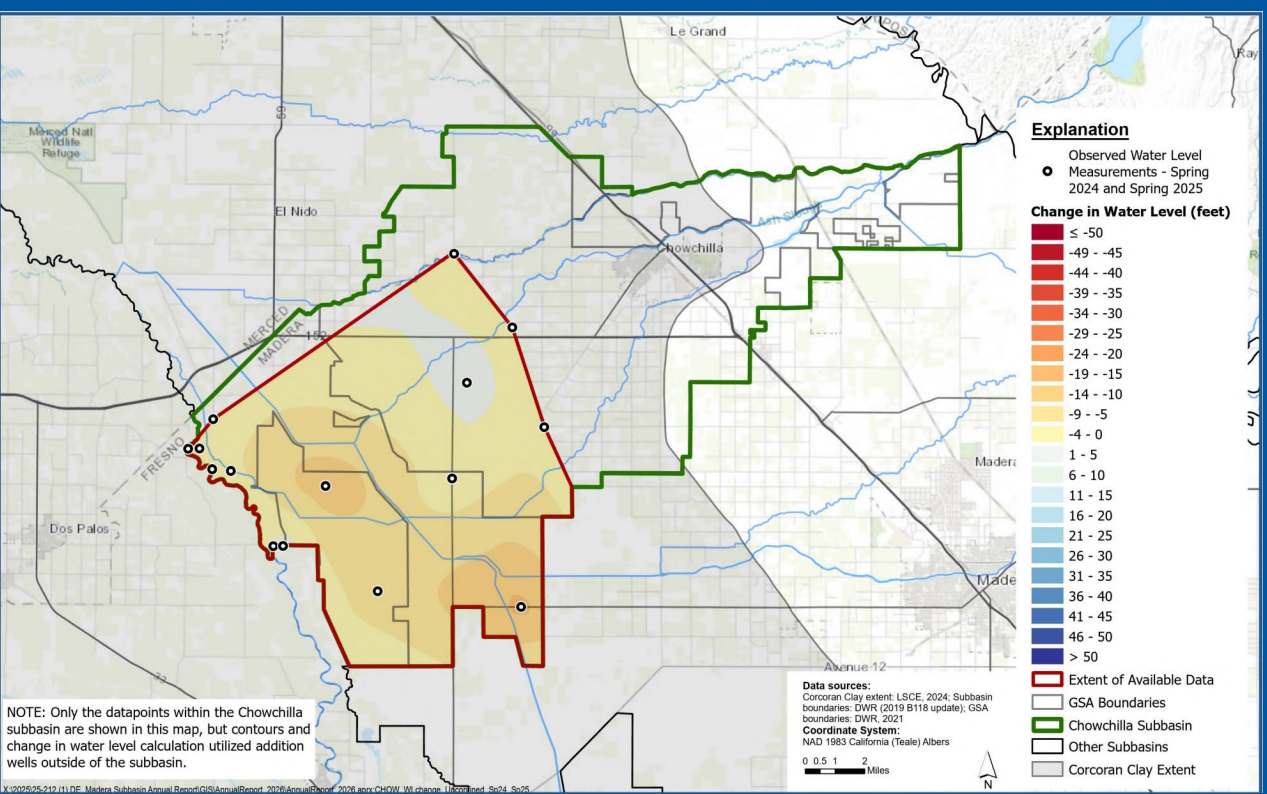
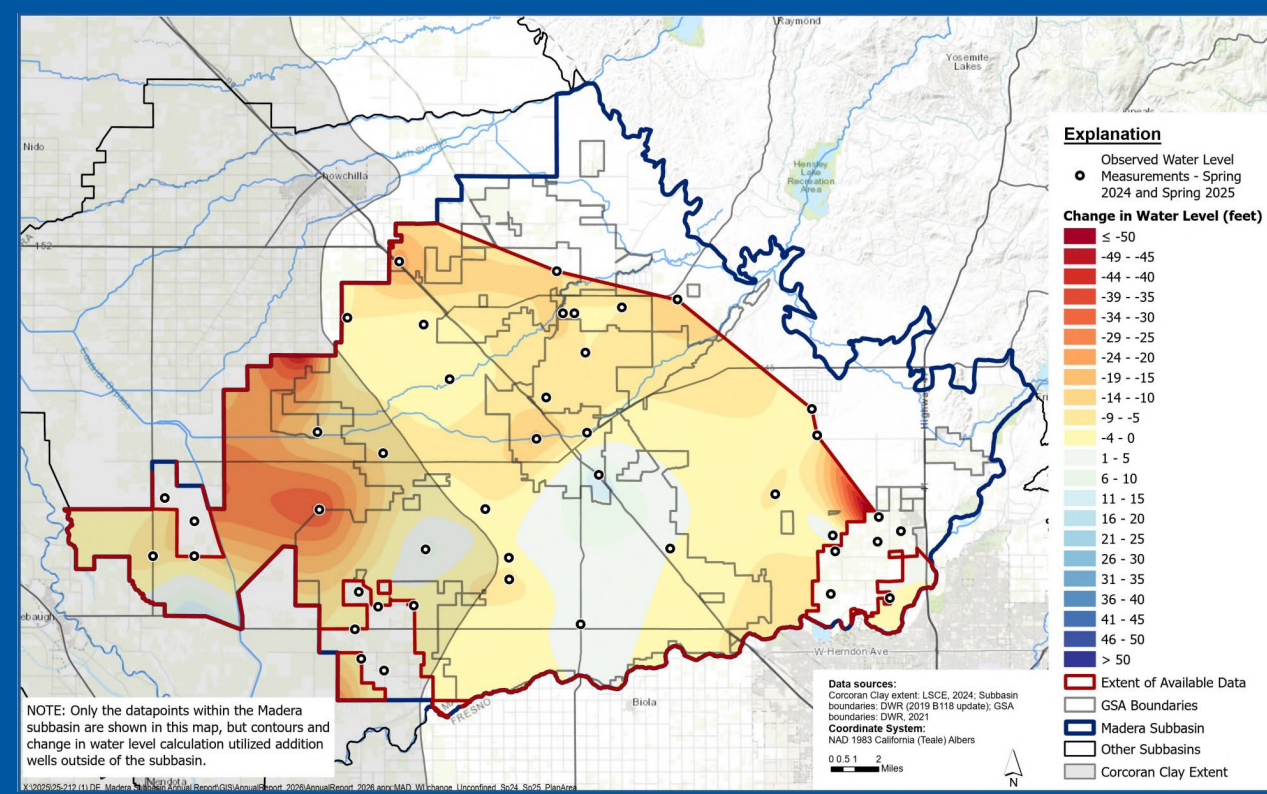
# Groundwater Contours - Spring 2025 GW Contours



Lower Aquifer, Madera Subbasin

Lower Aquifer, Chowchilla Subbasin

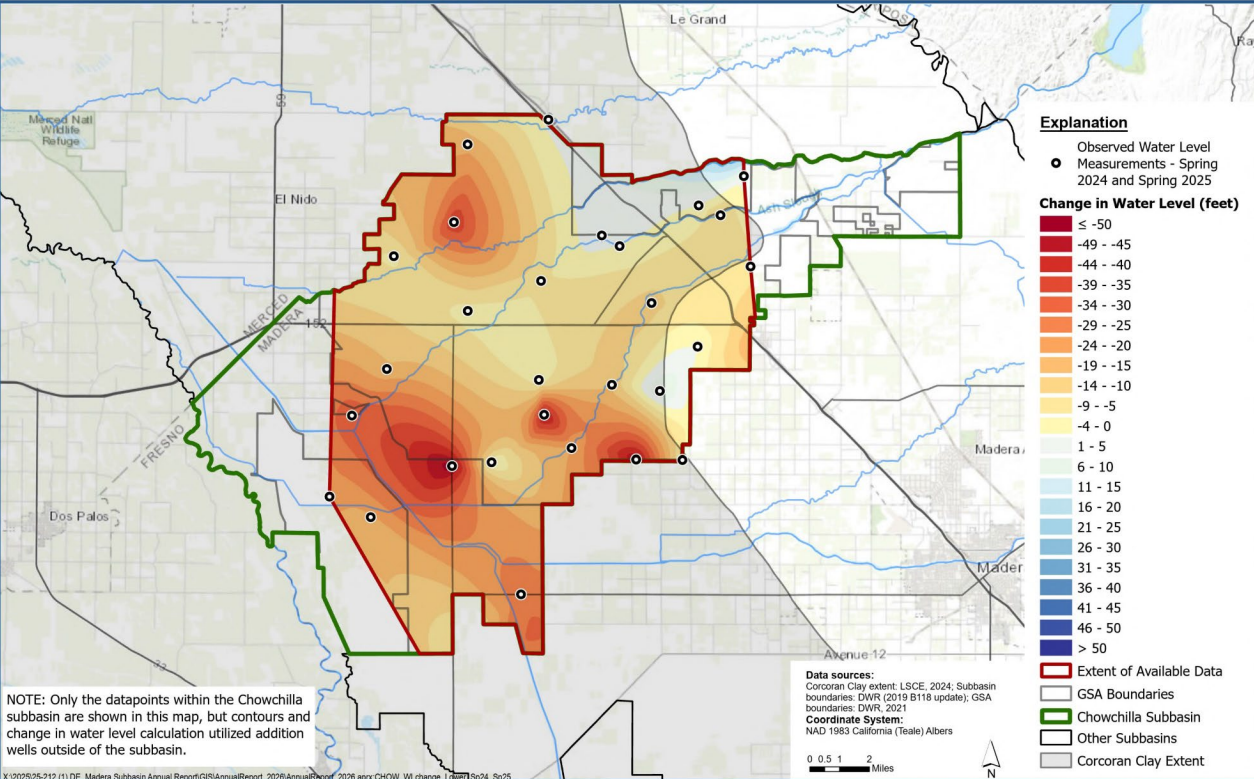
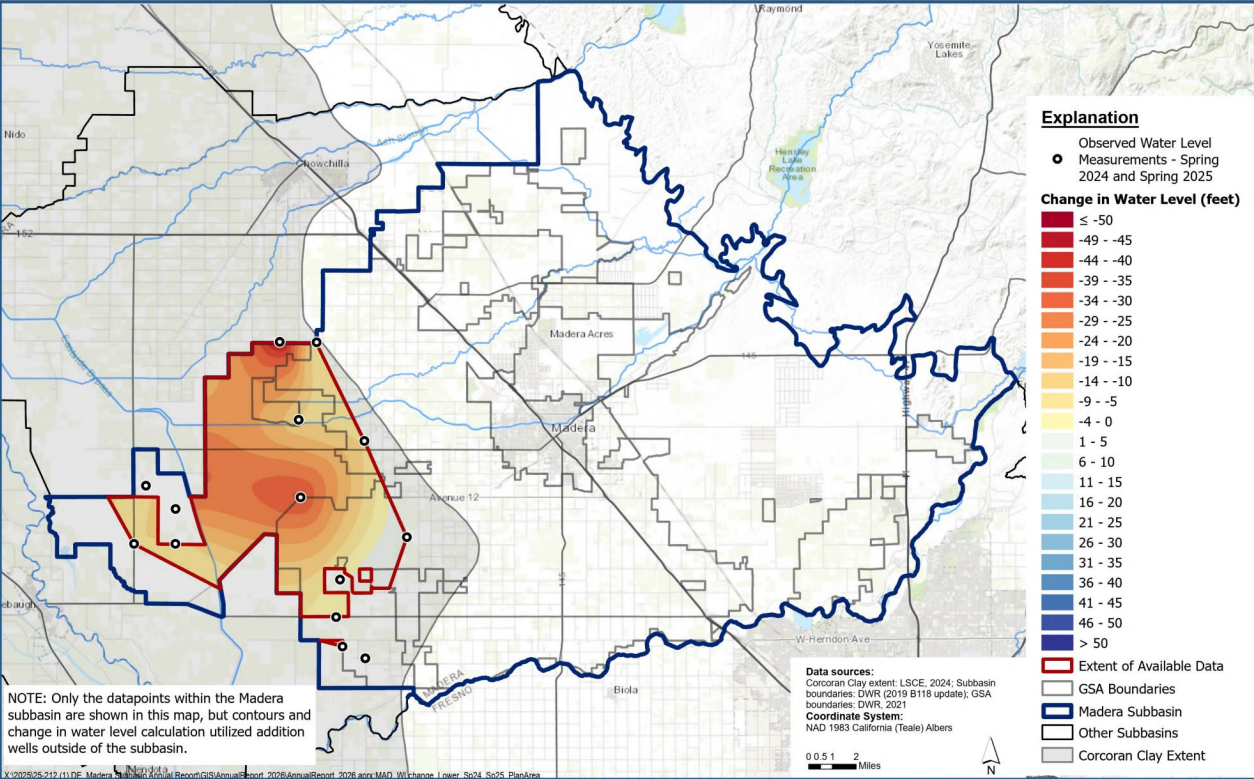
# Groundwater Level Change - Spring 2024-2025



Upper Aquifer, Madera Subbasin

Upper Aquifer, Chowchilla Subbasin

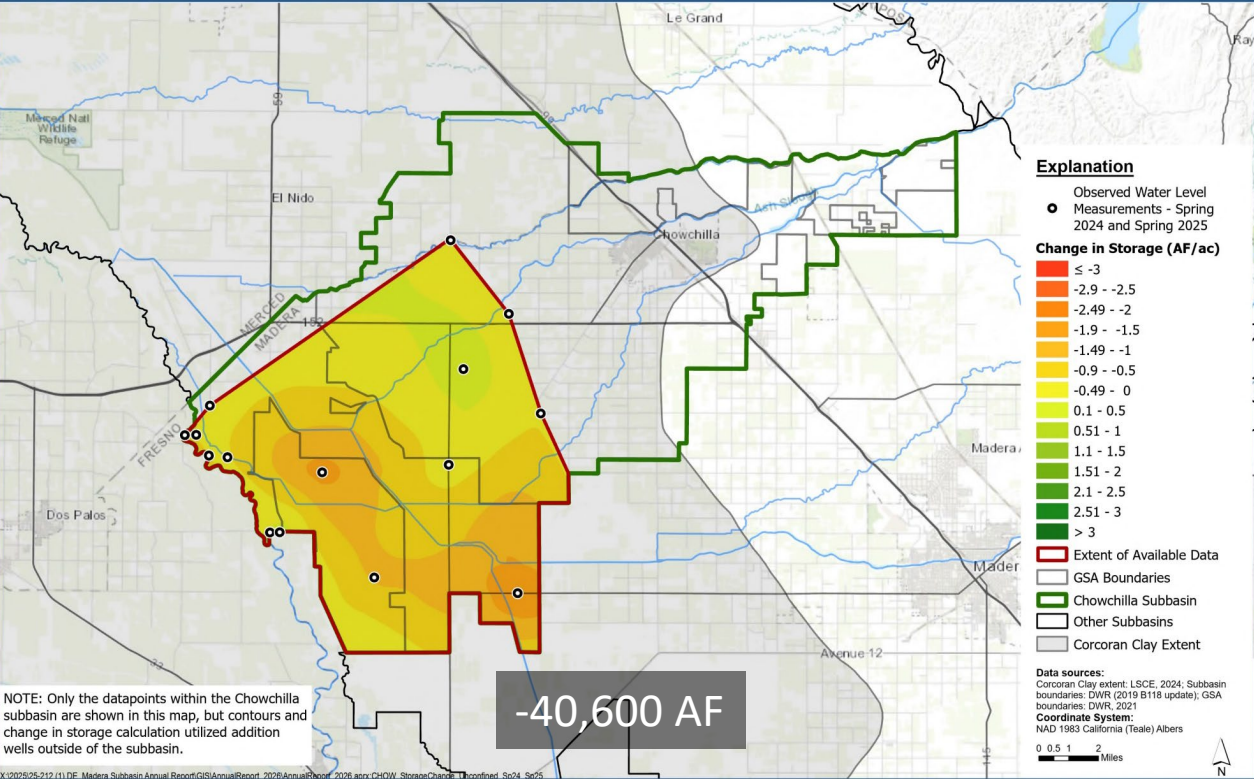
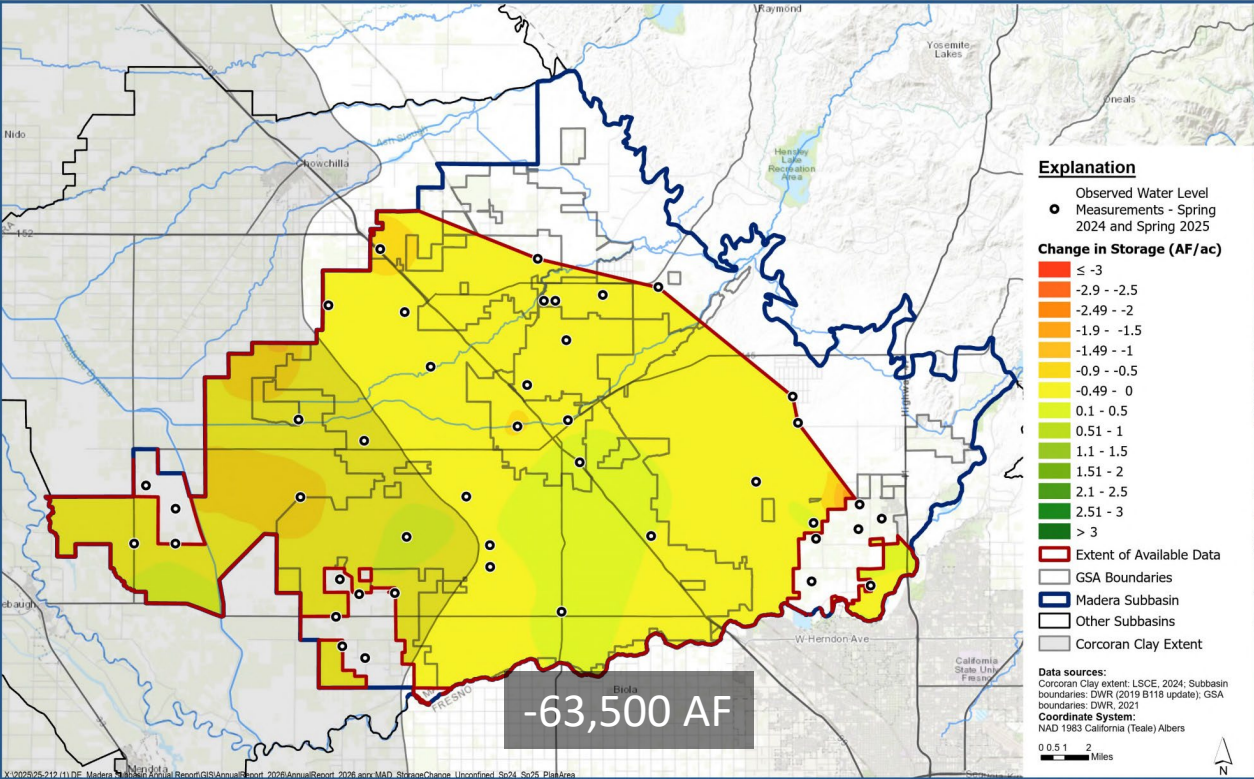
# Groundwater Level Change Spring 2024-2025



Lower Aquifer, Madera Subbasin

Lower Aquifer, Chowchilla Subbasin

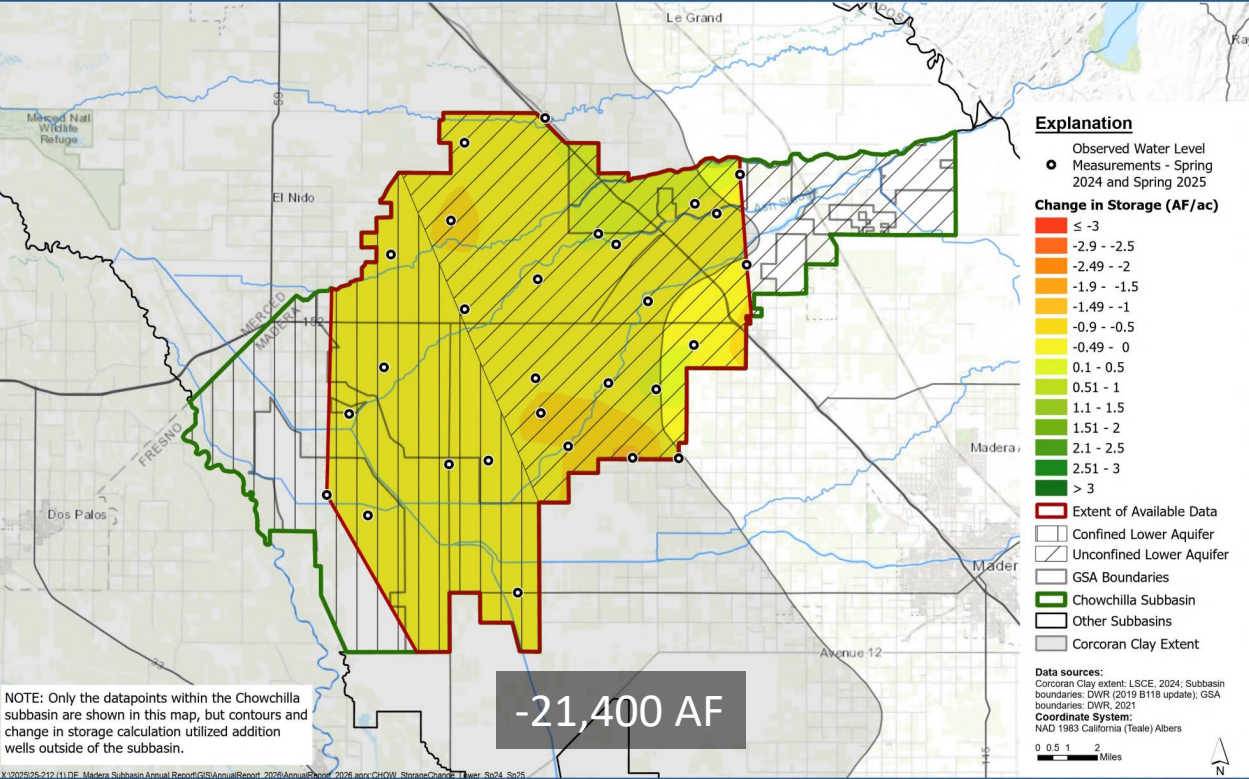
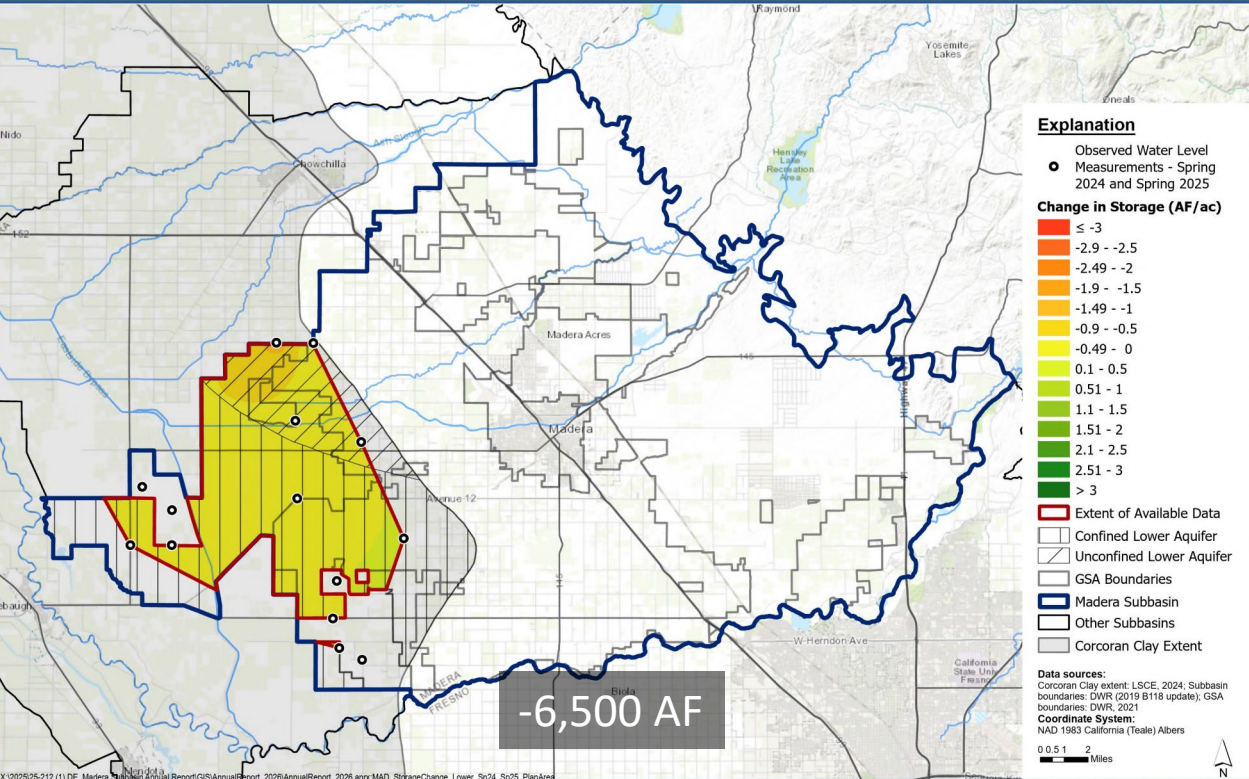
# Groundwater Storage Change – Spring 2024-2025



Upper Aquifer, Madera Subbasin

Upper Aquifer, Chowchilla Subbasin

# Groundwater Storage Change – Spring 2024-2025



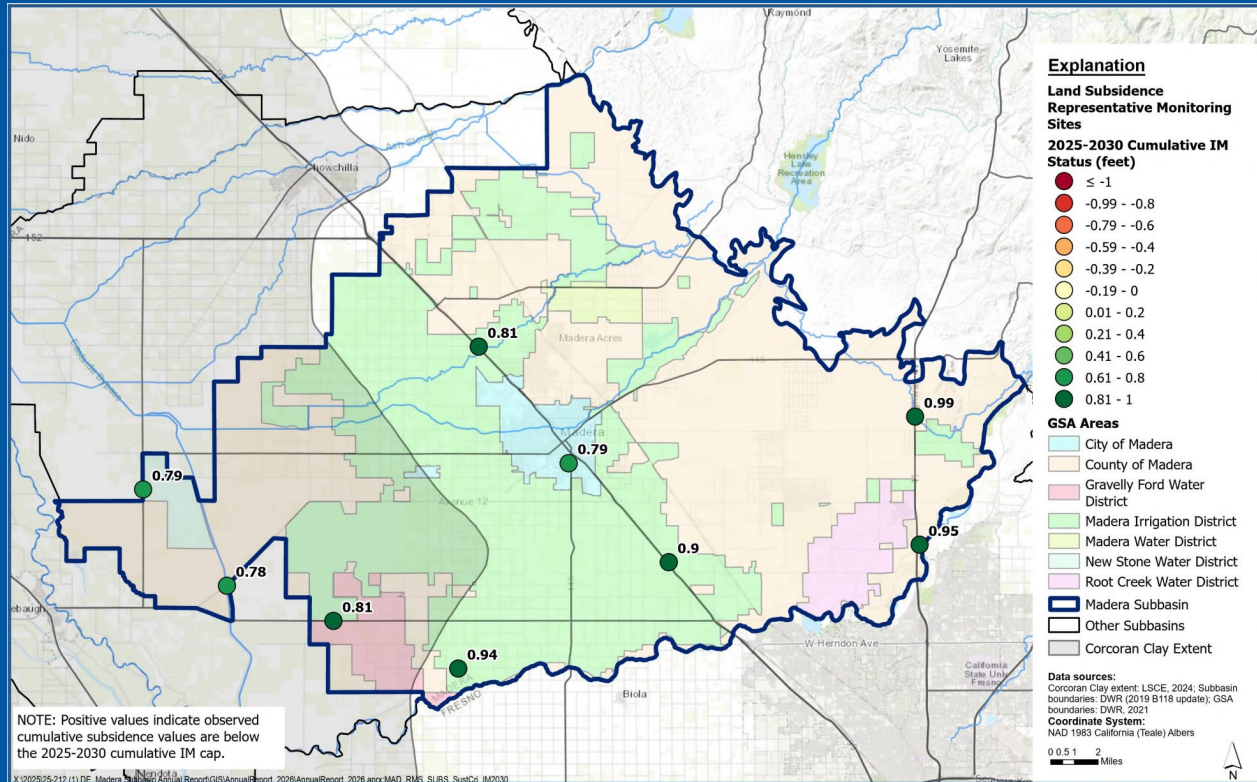
Lower Aquifer, Madera Subbasin

Lower Aquifer, Chowchilla Subbasin

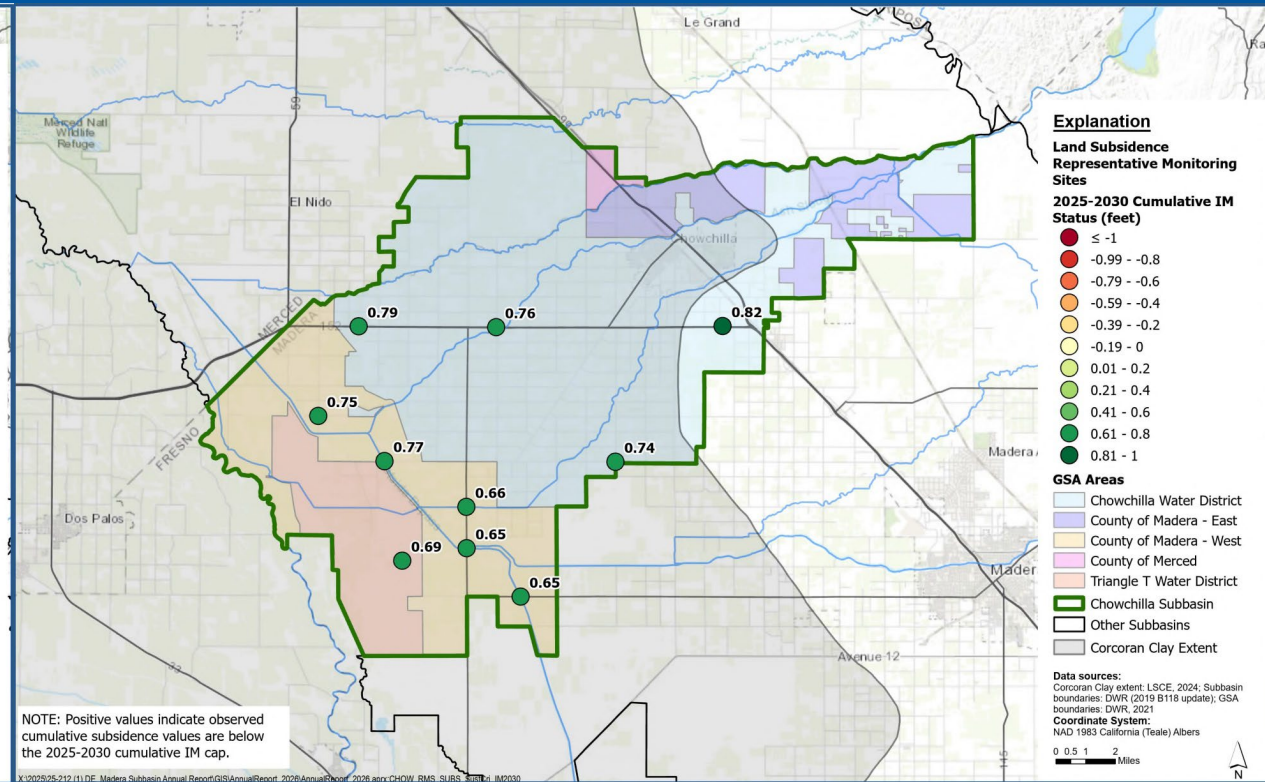
# Land Subsidence

- USBR no longer monitoring SJRRP subsidence benchmarks
  - DWR InSAR data utilized for WY 2025 Annual Reports
- Met with DWR on 3/16/26 to discuss future of SJRRP network
- Ongoing discussions with multiple GSAs about long-term subsidence monitoring
  - InSAR
  - SJRRP subsidence benchmarks

# Land Subsidence – Cumulative Rates vs. 2030 IMs



Madera Subbasin



Chowchilla Subbasin

# WY 2025 Surface Water System Water Budget

- Overview

- Water budgets are computed via MCSim
- WY 2025 was a “Below Normal” water year type
- Reporting Requirements:
  - Groundwater Extraction
  - Surface Water Supplies (Used or Available for Use)
  - Total Water Use

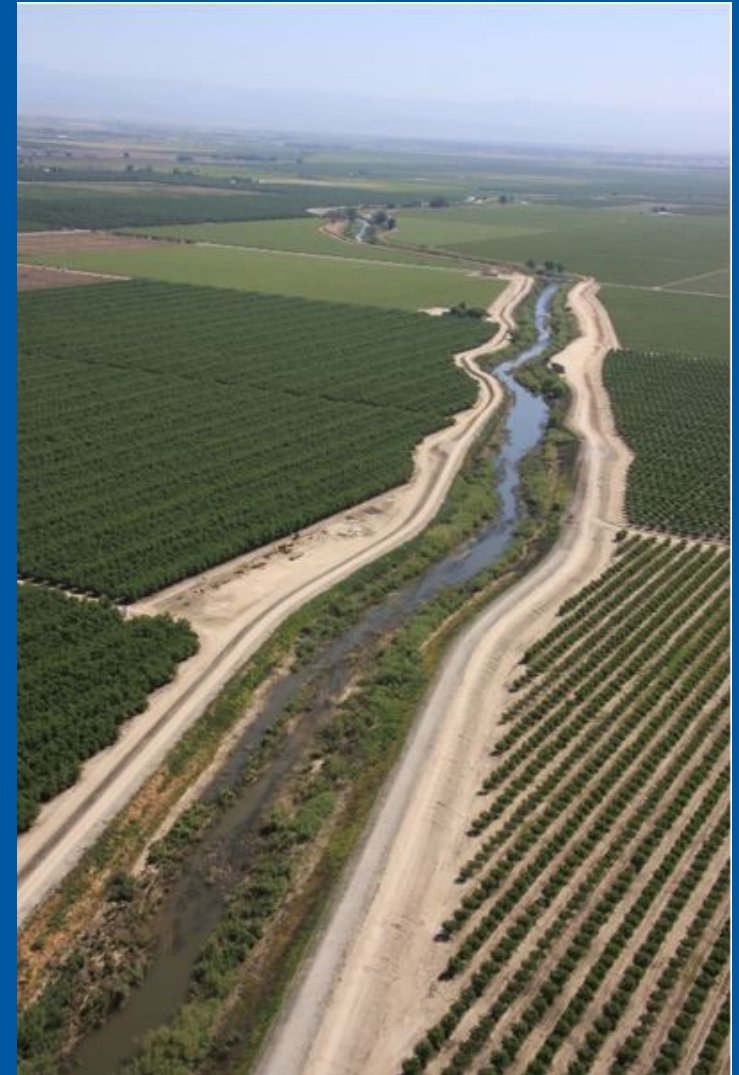
# WY 2025 Surface Water System Water Budget – Chowchilla Subbasin

- **Total Groundwater Extraction = 305,800 AF**
  - AG = 299,000 (98%)
  - Urban = 6,800 (2%)
- **Total Surface Water Supplies = 152,100 AF**
  - Local Supplies = 4,600 AF (3%)
  - CVP Supplies = 141,200 AF (93%)
  - Local Imported Supplies = 6,300 AF (4%)
- **Total Recharge = 144,000 AF**
  - Recharge from Applied Water = 59,000 AF (41%)
  - Recharge from Precipitation = 16,000 AF (11%)
  - Recharge from Surface Water = 69,000 AF (48%)



# WY 2025 Surface Water System Water Budget – Madera Subbasin

- **Total Groundwater Extraction = 567,900 AF**
  - AG = 538,000 (95%)
  - Urban = 29,900 (5%)
- **Total Surface Water Supplies = 189,000 AF**
  - Local Supplies = 76,000 AF (40%)
  - CVP Supplies = 121,000 AF (60%)
- **Total Recharge = 263,800 AF**
  - Recharge from Applied Water = 97,800 AF (37%)
  - Recharge from Precipitation = 45,300 AF (17%)
  - Recharge from Surface Water = 120,600 AF (46%)



# GSA Projects and Management Actions Summary – Chowchilla Subbasin

- CWD – 10 Projects
- Madera County – 7 Projects
- SVMWC – 1 Project
- TTWD – 3 Projects
- Status ranges from planned to implemented
- Total benefit in WY 2025 = 60,523 AF
- Significant local investment
- Increase recharge, reduce groundwater pumping, demand reduction, and water supply acquisition
- Domestic Well Mitigation Program
- Groundwater Demand Management Programs and Subsidence Mitigation Measures

# GSA Projects and Management Actions Summary – Madera Subbasin

- MID – 19 Projects
- Madera County – 6 Projects
- City of Madera – 3 Project
- MWD – 1 Projects
- GFWD – 3 Projects
- RCWD – 6 Projects
- Status ranges from in progress to implemented
- Total benefit in WY 2025 (Joint GSAs) = 25,624 AF
- Significant local investment
- Increase recharge, reduce groundwater pumping, demand reduction, and water supply acquisition
- Domestic Well Mitigation Programs



Questions?



## Item 4.d

Action Item: Consideration and Recommendation to Amend the Domestic Well Mitigation Program



@MADERACOUNTY  
maderacounty.com





# Madera Dry Well Program Update

January 1<sup>st</sup> – April 3<sup>rd</sup> 2026

15 inquires via dedicated phone line/website

Initial Screening

7 Do Not Qualify

3 Passed Initial Screening (program rules)

5 Pending

Well Assessments (2<sup>nd</sup> & 4<sup>th</sup> Wednesday of Month)

2 Completed



@MADERACOUNTY  
maderacounty.com





# Madera Dry Well Program Update

March 20<sup>th</sup>, 2026 – mailing to 90% of Homes in Service Area with Domestic Wells



Madera County Water & Natural Resources  
200 W. 4<sup>th</sup> Street Madera, CA 93637

## CHECK YOUR ELIGIBILITY

Scan the QR Code  
for Program Details  
and Application



1

Must be a landowner with a domestic well located within the MCGSA boundaries.

2

Property must have a domestic well that went dry after 1/1/2026 or is on the Self-Help Enterprises interim water assistance list.

3

Property owner must have owned property for a minimum of one year.

4

Dwelling unit must be considered "habitable."



## Support for replacing dry or subsidence-damaged domestic wells within the Madera County GSA boundaries

The Madera County Groundwater Sustainability Agency 's (MCGSA) Dry Well Program (Program) provides financial assistance to eligible landowners impacted by declining groundwater levels in the Madera Subbasin, within the MCGSA. This Program helps fund (up to \$35,000) the drilling of new domestic well or connection to an existing community water system to replace those that have gone dry or been damaged by subsidence.



@MADERACOUNTY  
maderacounty.com



[WWW.MADERADRYWELL.COM](http://WWW.MADERADRYWELL.COM)

(559) 655-6807

[INFO@MADERADRYWELL.COM](mailto:INFO@MADERADRYWELL.COM)



# Madera Dry Well Program Update

Website: [maderadrywell.com](https://maderadrywell.com)

MADERA COUNTY GSA  
DRY WELL PROGRAM

Home Program Details Resources APPLICATION EN ES

## Madera County GSA Dry Well Program

The Madera County Groundwater Sustainability Agency's (MCGSA) Dry Well Program (Program) provides financial assistance to landowners impacted by declining groundwater levels in the Madera Subbasin, within the MCGSA boundaries. This Program helps fund (up to \$35,000) the drilling of new domestic well or connection to an existing community water system to replace those that have gone dry or been damaged by subsidence.

PROGRAM DETAILS APPLY TODAY

### Program Eligibility

Here is a summary of eligibility requirements needed to participate:

- Must be a landowner with a domestic well located within the MCGSA boundaries.**
- Property must have a domestic well that went dry after 1/1/2026 or is on the Self-Help Enterprises interim water assistance list (with a dry domestic well due to declining groundwater levels that occurred after the 1/1/2020 cutoff).**



@MADERACOUNTY  
maderacounty.com





# Madera Dry Well Program Revisions

## Process Oversight

- Initial Screening  
Compliance with Program Rules
- Well Inspection  
Failed Well due to Declining Groundwater and/or  
Subsidence
- Funding Determination – Well Driller Quote  
Eligible Reasonable Costs (Landowner Agreement)



@MADERACOUNTY  
maderacounty.com





# Madera Dry Well Program Revisions

Authorized	Unauthorized
Well drilling and installation of casing and sanitary seals	Lowering pump, deepening, or modifying an existing well in lieu of replacement
Installation of a submersible pump (new or existing, if in good working order)	Installation of a well with capacity exceeding that necessary for domestic household use (“oversized well”)
Electrical wiring, conduit, and pump control components necessary to operate the domestic well	Storage tanks not necessary for basic domestic service
Pitless adapter and wellhead fittings	Electrical upgrades beyond those required to operate the domestic well
Pressure tank and pressure switch necessary to regulate household water pressure	Water lines or plumbing systems serving non-residential structures (e.g., barns, shops, or agricultural uses)
Trenching and installation of the water service line connecting the well to the residence	Backup, standby, or redundant water supply systems
Basic plumbing connections, valves, and appurtenances necessary to deliver water into the home	Irrigation, landscaping, or other non-domestic water system components (including sprinkler system connections)
Well completion activities, including system testing, startup, and disinfection	Landscaping, site improvements, or aesthetic enhancements (e.g. decorative enclosures, concrete pads beyond functional necessity, fencing for non-operational purposes) around the well site
Other reasonable and necessary components required to establish a functional domestic water supply system for the residence (e.g., minor fittings, connectors, or appurtenances integral to system operation)	Any costs, components, or improvements that are not directly and solely necessary to restore basic domestic water service to the residence (e.g., system upgrades for increased capacity, convenience features, or non-essential improvements)



@MADERACOUNTY  
maderacounty.com





# Staff Recommendation

Approve amended resolution updating eligible mitigation costs for the Domestic Well Mitigation Program.



@MADERACOUNTY  
maderacounty.com





# Item 4e

Informational Item: Review Penalty Data.



@MADERACOUNTY  
maderacounty.com



# 2025 Penalty Summary Table

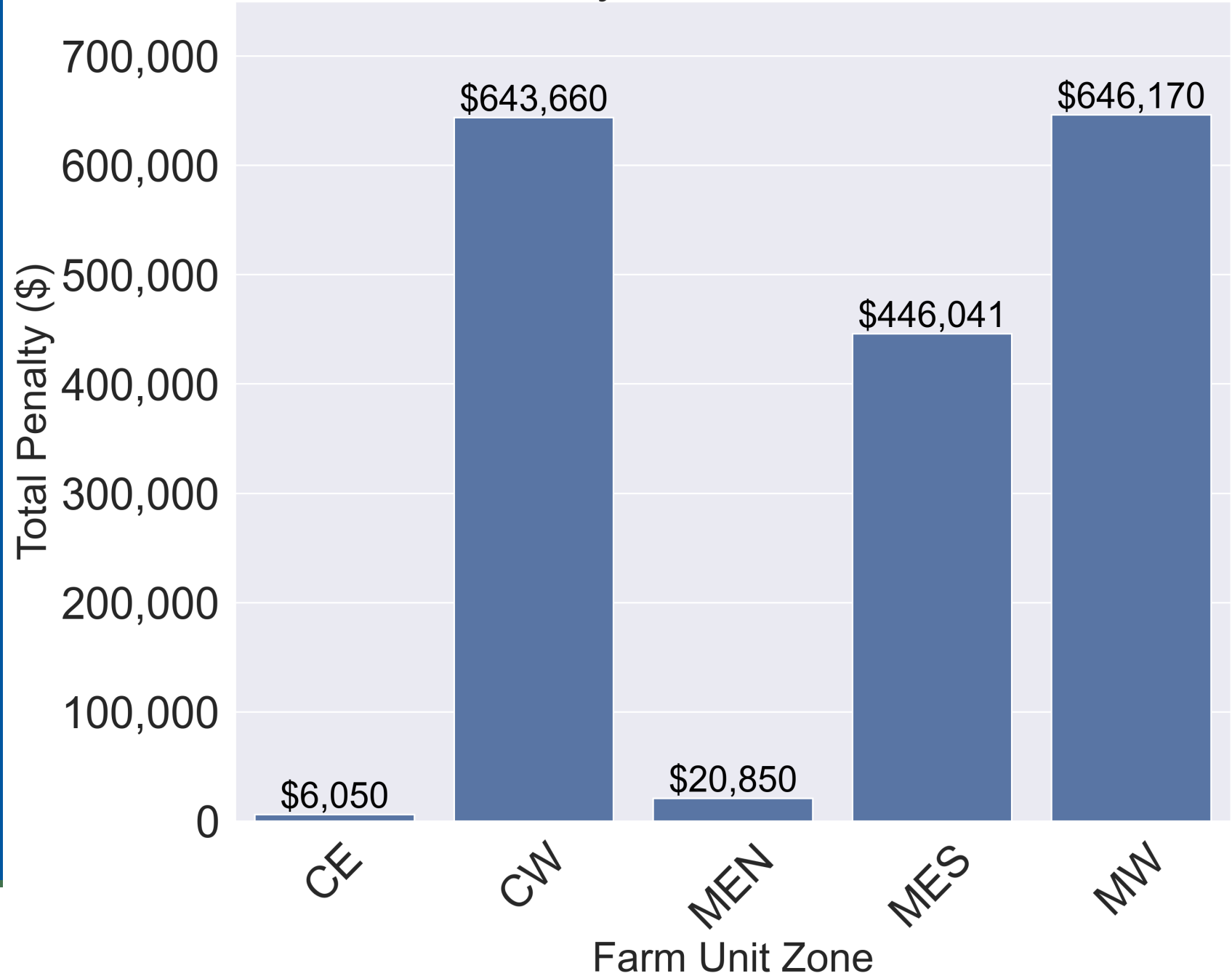
Subbasin	Total Assessed Acreage	Assessed Acreage of Farm Units in Penalty	Total Penalty (\$)
Chowchilla	37,998	3,597	\$649,710
Madera	88,129	6,632	\$1,113,061

All penalties are rounded to the nearest dollar

No Delta-Mendota penalty in 2025

Total 2025 penalty: **\$1,762,771**

## 2025 Total Penalty Within Each Farm Unit Zone



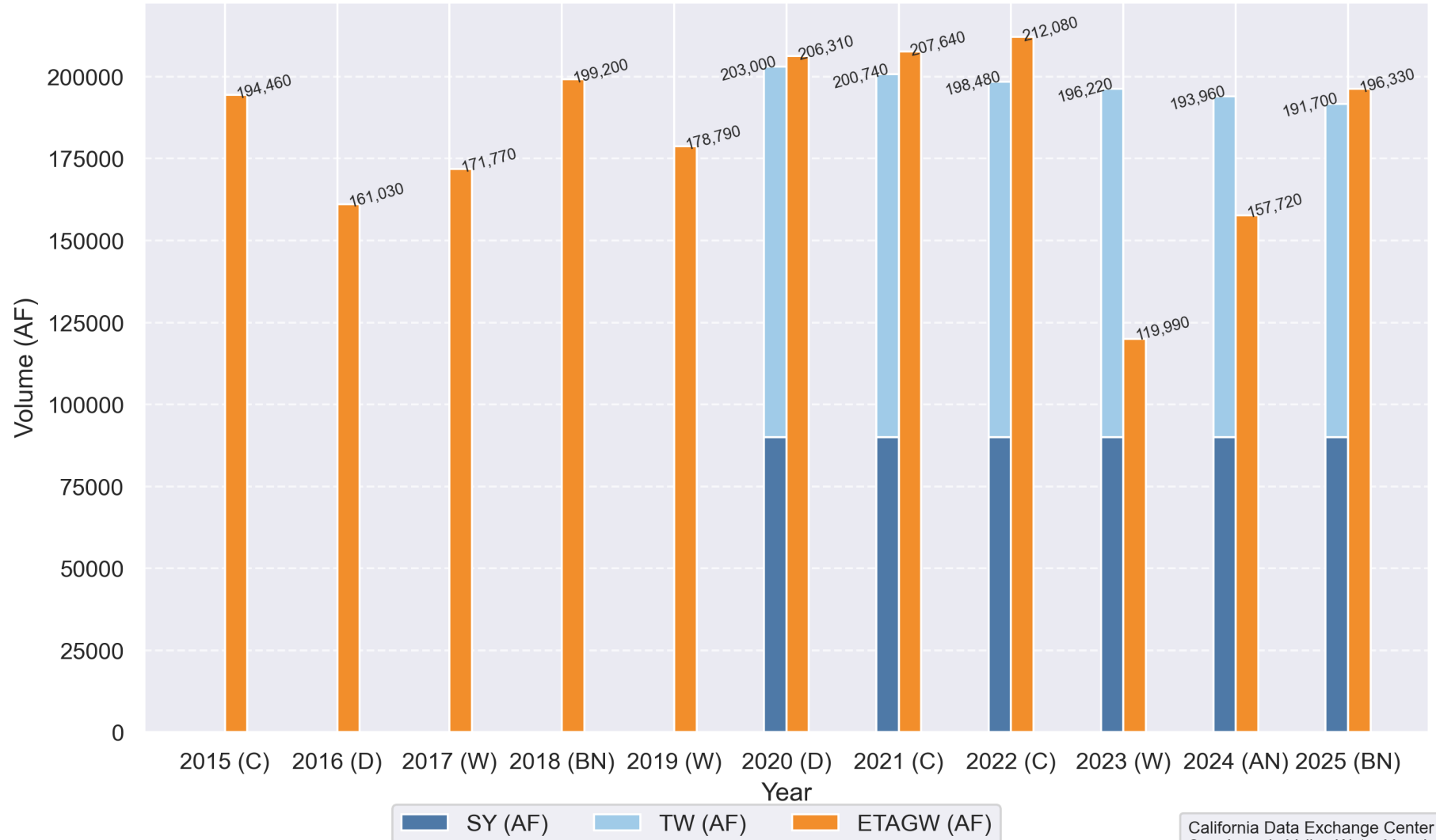
# Farm Units with Recurring Penalties

Farm Unit Count	Years in Penalty
17	3
22	2
37	1

# Evapotranspiration of applied ground water (ETAGW) trends across time within the Madera County GSAs, Madera Subbasin

Excludes all known applied surface water data received by March 30, 2026

Madera County GSAs Madera Subbasin Volume (AF) per year (2015-2025)



This analysis is based on a total geometric acreage of 88,250 AC for the Madera Subbasin for all years.

Note: Consumptive use of applied surface water data has been excluded from this ETAGW analysis if the data has been provided.

Note: The 2025 Water Year Index is preliminary and has not been finalized by the California Department of Water Resources.

California Data Exchange Center  
 San Joaquin Valley Water Year Index

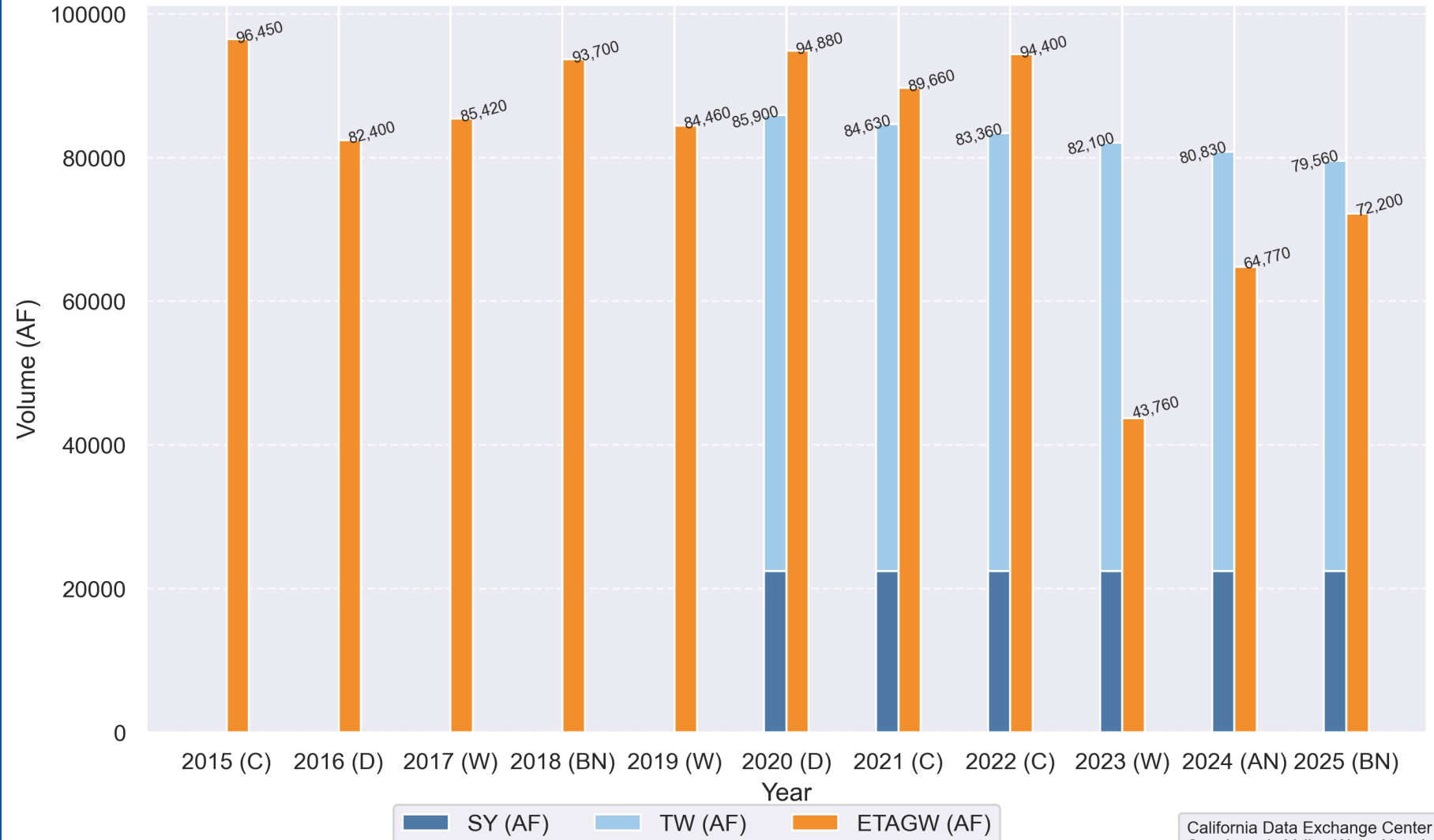
- Wet (W)
- Above Normal (AN)
- Below Normal (BN)
- Dry (D)
- Critical (C)



# Evapotranspiration of applied ground water (ETAGW) trends across time within the Madera County GSAs, Chowchilla Subbasin

Excludes all known applied surface water data received by March 30, 2026

Madera County GSAs Chowchilla Subbasin Volume (AF) per year (2015-2025)



This analysis is based on a total geometric acreage of 38,100 AC for the Chowchilla Subbasin for all years.

Note: Consumptive use of applied surface water has been excluded from this ETAGW analysis if the data has been provided.

Note: The 2025 Water Year Index is preliminary and has not been finalized by the California Department of Water Resources.

California Data Exchange Center  
San Joaquin Valley Water Year Index

- Wet (W)
- Above Normal (AN)
- Below Normal (BN)
- Dry (D)
- Critical (C)





## Item 4f

Action Item: Consideration and recommendation to adopt Chowchilla Subbasin Groundwater Demand Management Programs and Subsidence Mitigation Measures Report.



@MADERACOUNTY  
maderacounty.com





**Chowchilla Subbasin**  
*Groundwater Demand Management  
(GDM) and Subsidence Mitigation*  
*Madera County GSA Committee Meeting*

April 7, 2026

# Agenda

- Background
- Groundwater Demand Management (GDM)
- Take-aways
- Next Steps
- Questions

# Background

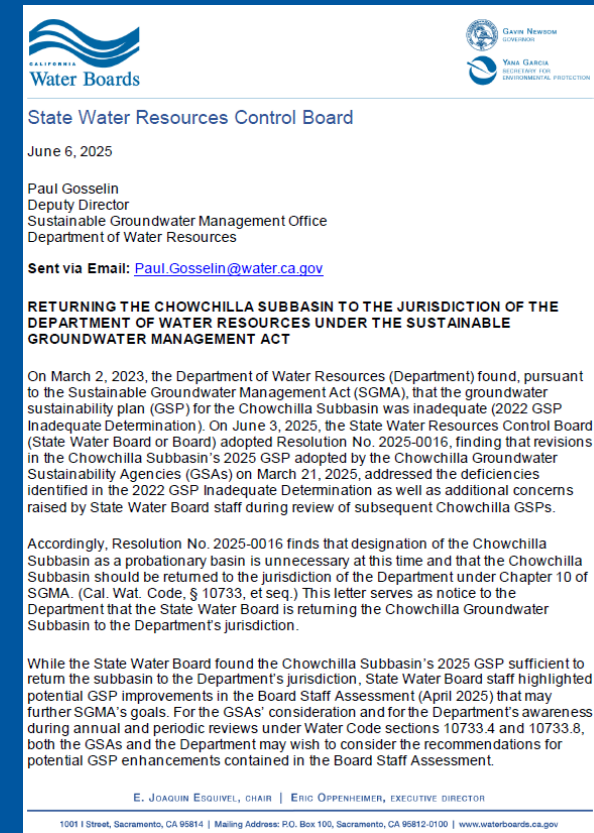
- Initial Chowchilla Subbasin (Subbasin) Groundwater Sustainability Plan (GSP) submitted to the Dept. of Water Resources (DWR) in January 2020.
- Revised on three occasions:
  - First revision: July 2022 (Addressing DWR incomplete determination)
  - Second revision: May 2023 (Addressing DWR inadequate determination)
  - Third revision: January 2025 (Addressing SWRCB comments upon return to DWR)
- Significant coordination with the State Water Resources Control Board (SWRCB)

# Background (Cont.....)

- What we heard from the SWRCB:
  - The Groundwater Sustainability Agencies (GSAs) in the Subbasin must provide a “backstop” (with specific triggers) to halt overdraft and subsidence.
  - The GSAs must consider financial mitigation for subsidence impacts, as necessary.
- GSAs’ Response:
  - Develop a GDM and Subsidence Mitigation Measures Memorandum of Understanding (MOU).
  - Develop GDM and Subsidence Mitigation Measures – ready for implementation no later than January 1, 2026.

# Background (Cont.....)

- Commitments in MOU (2025 Revised GSP Appendix 3N)
  - Components to develop include:
    - Specific measures (voluntary, mandatory; existing GSA programs vs. new programs)
    - Specific triggers
    - Proportionate responsibility
    - Funding/financing
    - Budget cycle and review
    - Program implementation and management
    - Public outreach, engagement
    - Coordination with existing programs in Chowchilla Subbasin and surrounding region
- Allowed for Subbasin to be sent back to DWR on June 3, 2025.



# Groundwater Demand Management

- Potential (Additional) Mandatory Measures:

**Table 2-3. Potential Mandatory Measures for GDM and Subsidence Mitigation.**

GSA	Existing Mandatory Measure Name	Potential Mandatory Measure (Potential Refinements Within Focused Areas if Triggers Conditions Occur)
CWD GSA	Groundwater Extraction Fee Program	Potentially adjust fee tiers, increase fee rates, modify extraction thresholds, and/or link fee tiers and rates to the severity or spatial extent of trigger occurrences. Potentially implement together with a Surface Water Incentive Program
Madera County GSA	Demand Management Program (with associated allocation, penalties, and recharge policies)	Potentially adjust transitional water to reduce groundwater extraction within focused areas, and/or set lower aquifer groundwater extraction limits within focused areas where subsidence risks are elevated. Potentially require measurement of wells used for Concentrated Animal Feeding Operations (CAFOs).
Merced County GSA	Demand Management Program (consistent with Madera County GSA)	Program implementation and refinements consistent with Madera County GSA
Triangle T Water District GSA	Subsidence Control Measures Agreement (with associated lower aquifer groundwater extraction limits) and forthcoming operating agreement	Potentially adjust lower aquifer groundwater extraction limits within focused areas where subsidence risks are elevated, refine the geographic extent of lower aquifer pumping restrictions, and/or strengthen monitoring requirements to ensure continued compliance

# Subsidence Mitigation – Triggers and Trigger Action

- Triggers

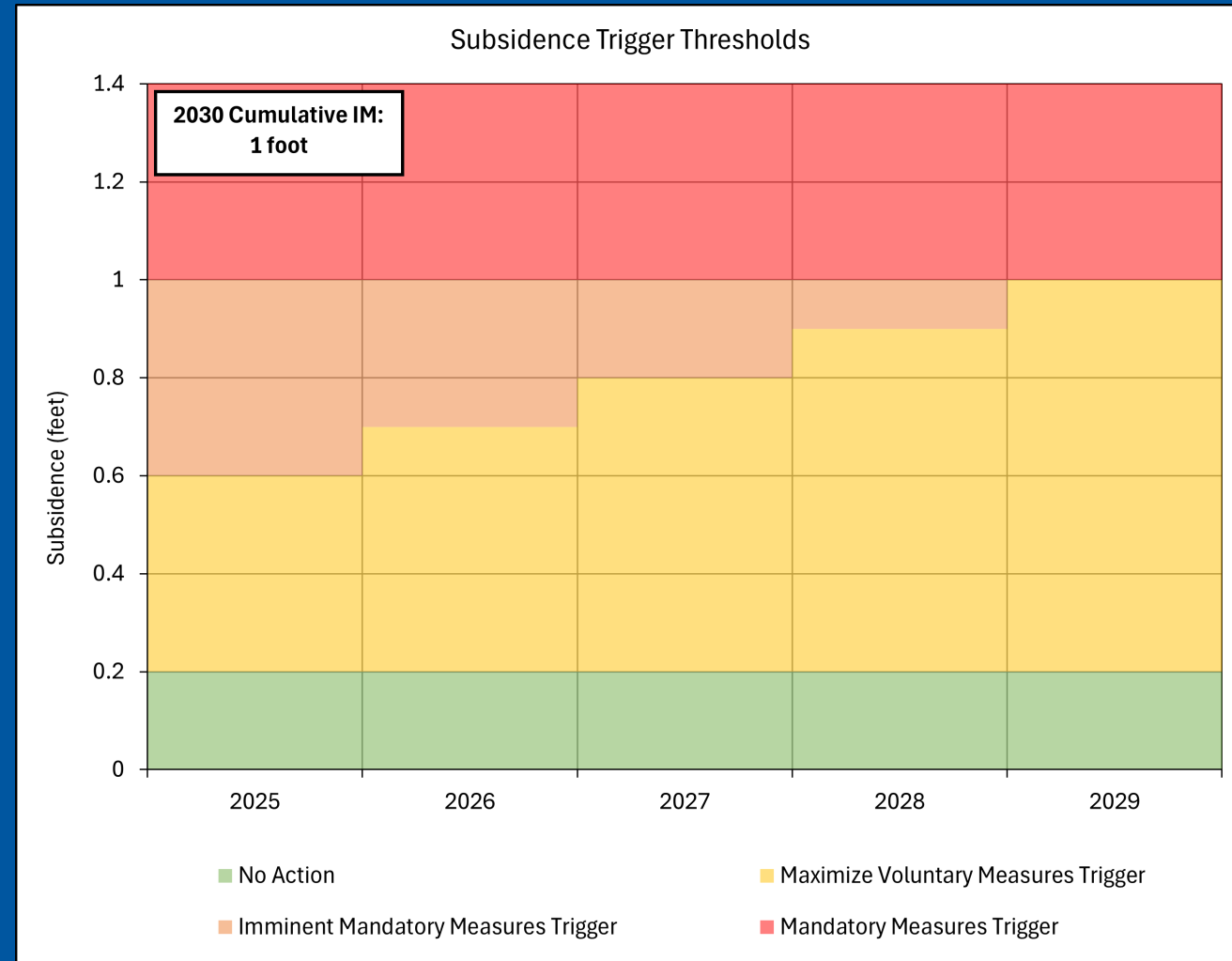
- Red Light/Mandatory Measures Trigger
- Orange Light/Imminent Mandatory Measures Trigger
- Yellow Light/Maximize Use of Voluntary Measures Trigger
- Green Light/No Action

- Requirement to Trigger Action

- Subsidence trigger thresholds at two RMS have been exceeded in the same year.

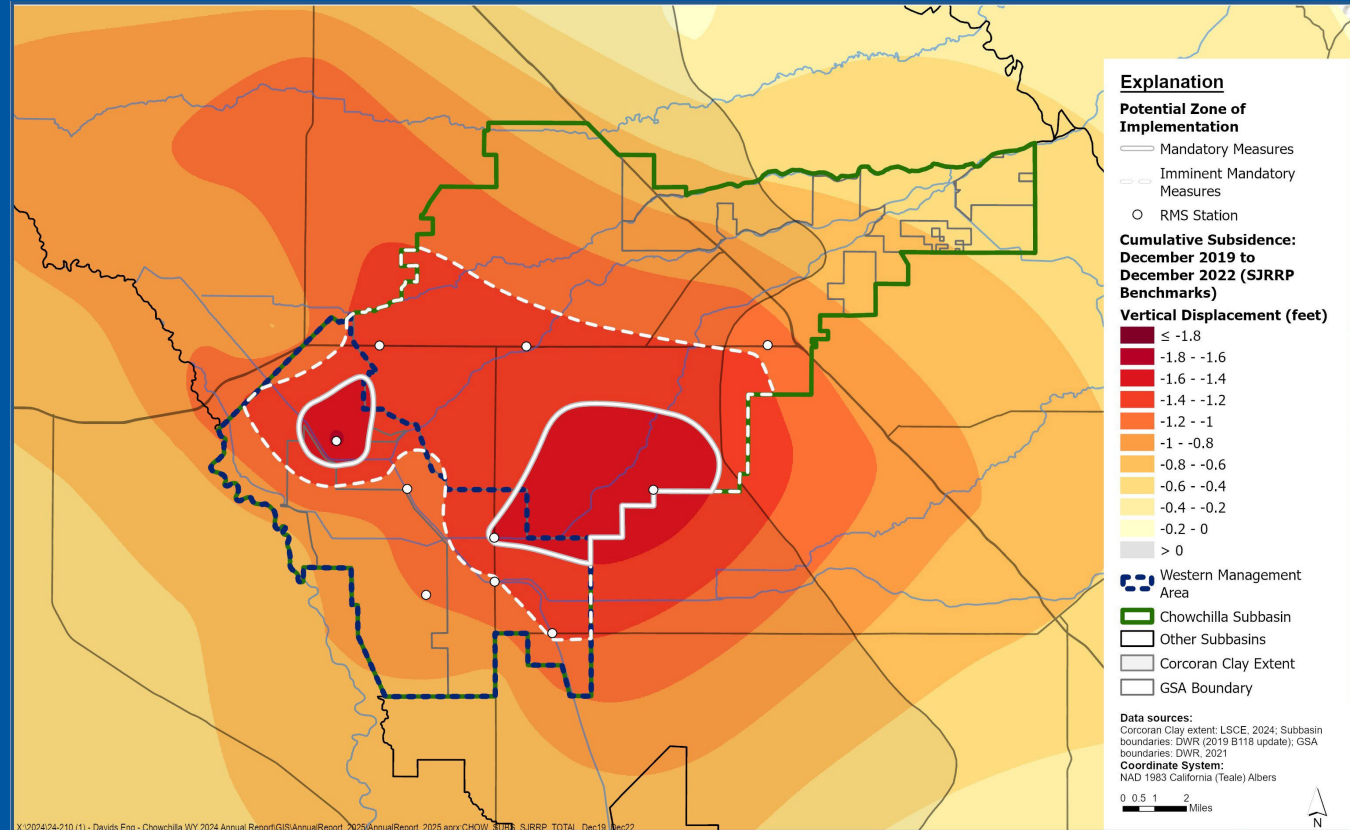
- Requirement to End Action

- Two consecutive years below the threshold



# Spatial Extent of Triggered Action

- Mandatory Measures boundary line to be drawn around mandatory measures trigger threshold
  - ex. For 2025-2030 period, around 1-foot of subsidence contour line
- Imminent Mandatory Measures boundary line to be drawn around secondary threshold
  - This area will be notified that an exceedance has occurred nearby and mandatory measures may be necessary within 1-year
- Include any parcels with 50% or more of area within the boundary line



# Takeaways

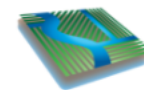
- GDM and subsidence mitigation measures required by the SWRCB, primary mechanism to avoid probationary status.
- Implementation ONLY if conditions warrant.
  - Not a one size fits all.
  - Geographically focused.
  - Different approaches in each GSA.
- Have “runway” for continued program refinement and additional public collaboration.

# Next Steps

- GSA governing body review and consideration.
- Included the GDM Report in Water Year 2025 Annual Report.
- Continue to monitor conditions within the Subbasin.
- Additional mandatory measure refinement, as necessary (adaptive management).
- Stakeholder outreach.
- Implementation ONLY if conditions warrant.



# Questions?



**DAVIDS**  
ENGINEERING, INC



**Luhdorff & Scalmanini**  
Consulting Engineers

# Groundwater Demand Management

- Voluntary Measures:

**Table 2-2. Existing Voluntary Measures for GDM and Subsidence Mitigation.**

GSA	Existing Voluntary Measure Name	Implementation Status
CWD GSA	Groundwater Recharge Basins	Implemented/ In Progress
CWD GSA	Flood-MAR	Implemented
CWD GSA	Enhanced Management of Flood Releases for Recharge	Implemented
CWD GSA	Land Fallowing Program	In Progress
Madera County GSA	Multi-Benefit Land Repurposing Program	In Progress
Madera County GSA	Water Purchase Program, Water Imports Purchase, and Millerton Flood Release Imports	In Progress
Madera County GSA	Chowchilla Bypass Flood Flow Recharge Projects	Implemented/ In Progress
Merced County GSA	SVMWC Recharge Basins to Capture Floodwater	In Progress
TTWD GSA	Utilize Existing Recharge Basin	Implemented
TTWD GSA	Additional Recharge Basins to Capture Floodwater	Implemented
TTWD GSA	Poso Canal Pipeline and Columbia Canal Company Pipeline Projects	Implemented

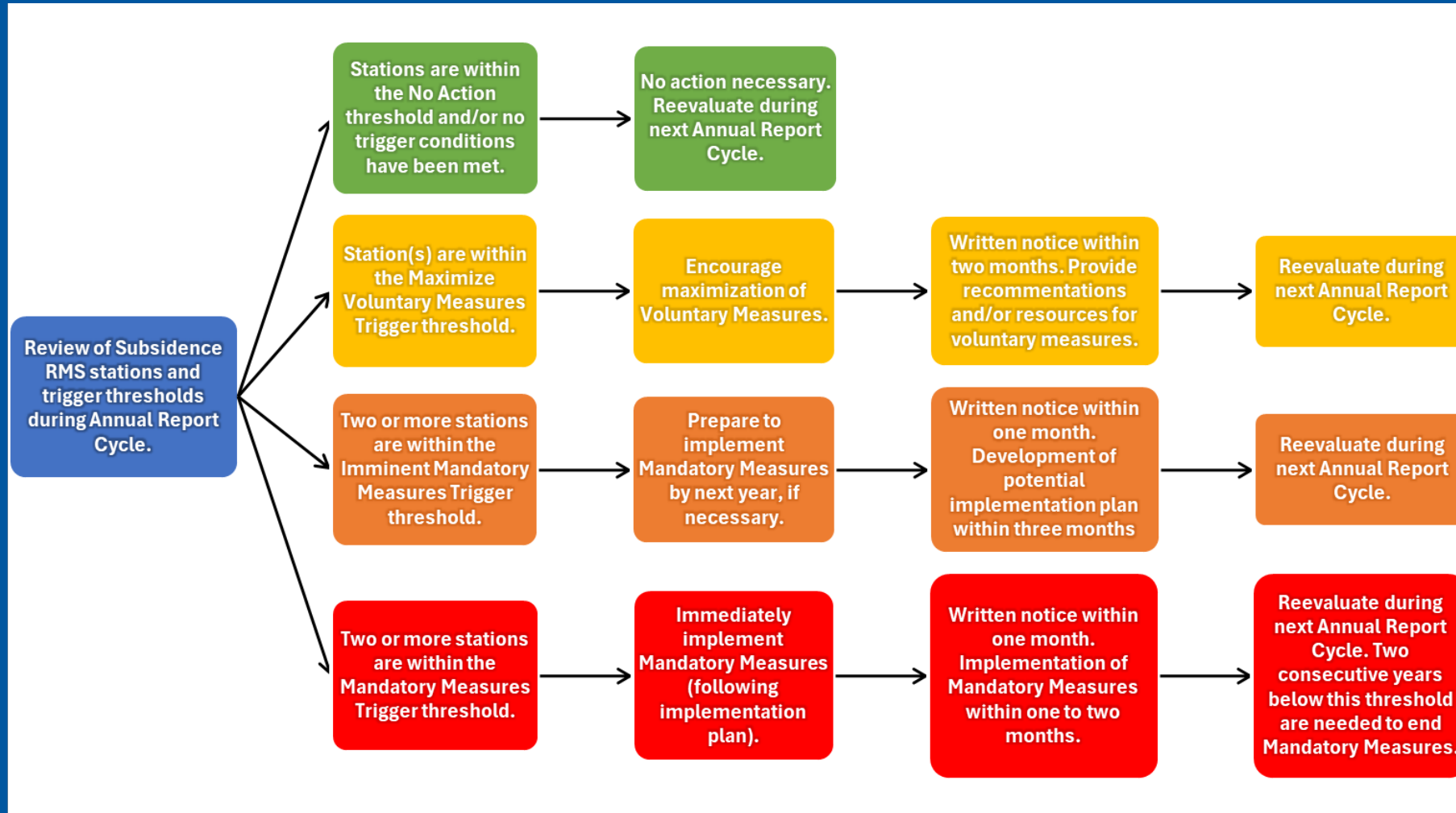
# Groundwater Demand Management

- Existing Mandatory Measures:

**Table 2-1. Existing Mandatory Measures for GDM and Subsidence Mitigation.**

GSA	Existing Mandatory Measure Name	Status
CWD GSA	Groundwater Extraction Fee Program	Planned (2026)
Madera County GSA	Demand Management Program (with associated allocation, penalties, recharge policies, and land fallowing as a byproduct of other policies)	Implemented
Merced County GSA	Demand Management Program (consistent with Madera County GSA)	Planned (2026)
Triangle T Water District GSA	Subsidence Control Measures Agreement (with associated lower aquifer groundwater extraction limits) and forthcoming operating agreement	Implemented (2017), with an Operating Agreement Planned (2026)

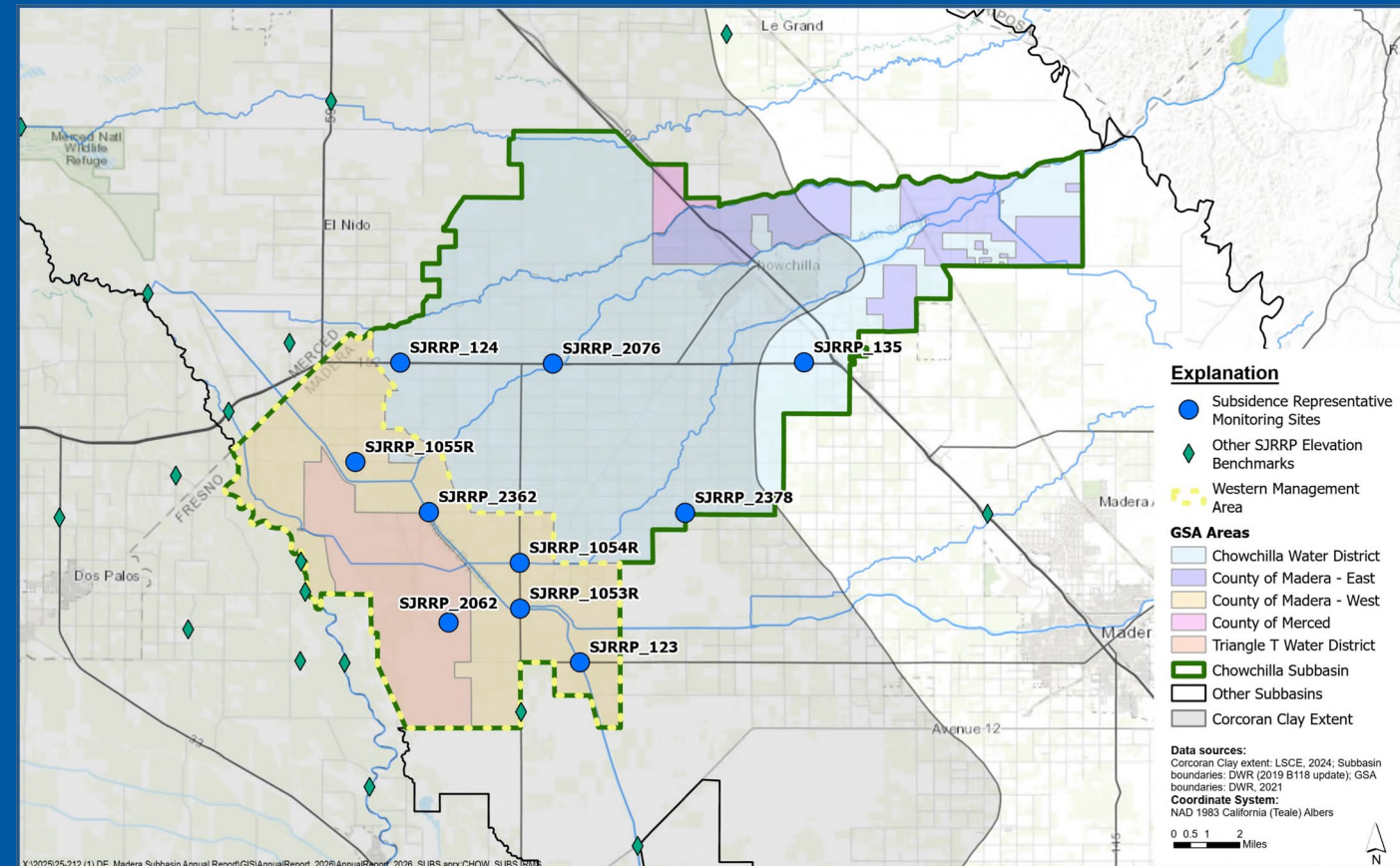
# Monitoring and Reporting





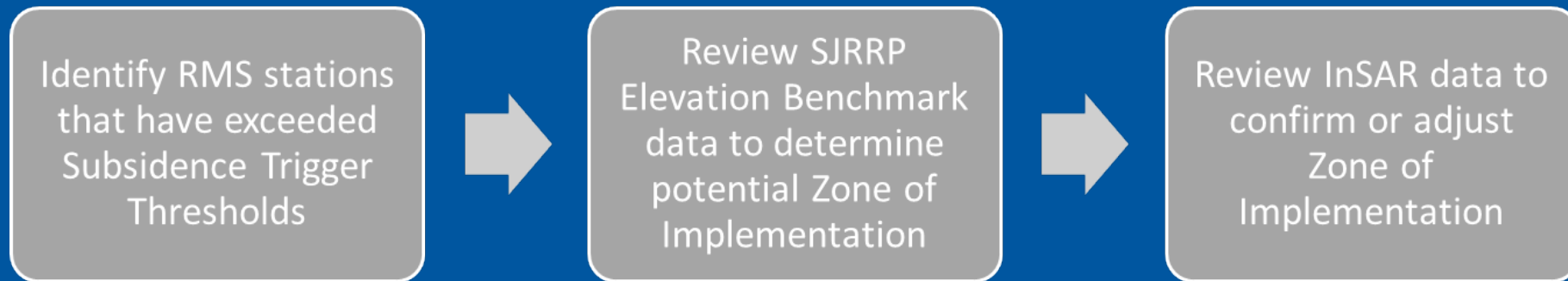
# Necessary Requirements to Trigger Action

- Condition to Trigger Action:  
“Subsidence trigger thresholds at two RMS have been exceeded in the same year.”
  - Orange and Red Light triggers are the actionable trigger thresholds



# Spatial Extent of Triggered Action

- Mandatory Measures boundary line to be drawn around mandatory measures trigger threshold
  - ex. For 2025-2030 period, around 1-foot of subsidence contour line
- Imminent Mandatory Measures boundary line to be drawn around secondary threshold
  - This area will be notified that an exceedance has occurred nearby and mandatory measures may be necessary within 1-year
- Include any parcels with 50% or more of area within the boundary line



# Spatial Extent of Triggered Action - Example

**NOTE: THIS IS NOT A TRIGGER THRESHOLD EXCEEDANCE, FOR EXAMPLE PURPOSES ONLY**

