



MADERA COUNTY **GROUNDWATER SUSTAINABILITY AGENCIES**

SUMMARY OF RULES

2
0
2
6

DISCLAIMER

The following is a summary of rules pertaining to the Madera County Groundwater Sustainability Agencies (MCGSA). It is essential to note that this summary is intended for informational purposes only. The information provided here is a consolidation of existing resolutions and guidelines, compiled into a single accessible resource for the convenience of the readers. This summary is not intended to create or establish any new policies, regulations, or rules for the MCGSA. All the rules and guidelines mentioned in this summary are already approved by the Board of Directors Groundwater Sustainability Agencies and in effect as per the relevant resolutions. The details mentioned here can be cross-referenced with the official resolutions of the MCGSA. The complete resolutions can be found at maderacountywater.com.



PREPARED BY:
MADERA COUNTY
WATER AND NATURAL
RESOURCES
DEPARTMENT



TABLE OF CONTENTS

Glossary	1
List of acronyms	2
Water management for the future	3
Introduction	
Madera County Groundwater Sustainability Agencies: Subbasins	4
Groundwater Sustainability Plans: Status	5
Allocations	
Frequently asked questions	6
2026 to 2040 allocations	7
Understanding a groundwater allocation report	8
Farm unit changes	10
Measurement	
Frequently asked questions	11
Private meter measurement method	12
Land Repurposing	
Multibenefit Land Repurposing Program	14
La Viña Pilot Project	15
Recharge	16
Madera Dry Well Program	17
Finances	18
Fees	20
Additional Resources	21
Resolutions	22

GLOSSARY

Allocation	A water budget made available to agricultural water users within the Madera County Groundwater Sustainability Agencies (MCGSA). Over time, the allocated water budget will decrease to sustainable levels.
Applied Water	The volume of water delivered through an irrigation system, which can be utilized for various purposes, including irrigation and evapotranspiration, deep percolation, and runoff, depending on the efficiency of the irrigation process. The measurement of applied water is done using meters that track the quantity of water used during irrigation.
Assessor's Parcel Number (APN)	A unique identifier assigned to a particular piece of land, helping to track and manage property ownership, assessments, and other property-related information.
Consumptive Water Use	The amount of water that is utilized by plants through evaporation and transpiration (commonly known as evapotranspiration).
Direct Recharge	Surface water applied to dedicated recharge basins and canals or cropped surfaces outside of the irrigation season.
Evapotranspiration (ET)	The sum of evaporation and transpiration.
Evapotranspiration of Applied Water (ETAW)	The volume of applied water that is transpired by plants and evaporated from the soil, which is also known as consumptive use. It is calculated by subtracting the consumption of rainfall from the total evapotranspiration. This value is typically less than the total applied water, as it represents the portion of water that is utilized by plants and lost through evaporation from the soil.
In Lieu Recharge	Surface water applied to cropped surfaces during the irrigation season.
Farm Unit	A set of linked parcels owned or managed by the same entity within the same farm unit zone, a specific geographic area.
Penalty	A charge for water use that is above the allocation.
Sustainable Yield (SY)	The amount of natural groundwater present in the subbasins through seepage and percolation.
Transitional Water (TW)	Excess groundwater being pumped from the subbasins; decreases over time.

LIST OF ACRONYMS

APN	Assessors Parcel Number
AF	Acre Feet
CE	Chowchilla Subbasin Madera County GSA East Farm Unit Zone
CPI	Consumer Price Index
CW	Chowchilla Subbasin Madera County GSA West Farm Unit Zone
DM	Delta-Mendota Subbasin Madera County GSA Farm Unit Zone
DWR	Department of Water Resources
ET	Evapotranspiration
ETAW	Evapotranspiration of Applied Water
GSA	Groundwater Sustainability Agency
GSP	Groundwater Sustainability Plan
ID	Identification
MALRP	Multibenefit Agricultural Land Repurposing Plan
MCGSA	Madera County Groundwater Sustainability Agencies
MLRP	Multibenefit Land Repurposing Program
MEN	Madera Subbasin Madera County GSA East - Northern Farm Unit Zone
MES	Madera Subbasin Madera County GSA East - Southern Farm Unit Zone
MW	Madera Subbasin Madera County GSA West Farm Unit Zone
SGMA	Sustainable Groundwater Management Act
SWRCB	State Water Resources Control Board
SY	Sustainable Yield
TW	Transitional Water
QR Code	Quick Response Code

WATER MANAGEMENT FOR THE FUTURE

Section 01

Introduction

This section provides an overview of the Subbasins in the Madera County Groundwater Sustainability Agencies (MCGSA) and the current status of each Groundwater Sustainability Plan (GSP).

Section 02

Allocations

This section outlines the 2026-2040 allocations, understanding allocation reports, and how farm units are grouped and when changes are allowed.

Section 03

Measurement

This section includes the current options available for measuring groundwater use in the Madera County Groundwater Sustainability Agencies (MCGSA).

Section 04

Land Repurposing

This section highlights how the Madera County Multibenefit Land Repurposing Program (MLRP) helps incentivize landowners to voluntarily transition irrigated farmland to more sustainable uses, while protecting local economies and communities.

Section 05

Recharge

This section offers an overview of the recharge credit policies in place and what has been currently approved and credited to growers.

Section 06

Madera Dry Well

The Madera Dry Well Program provides financial assistance to landowners impacted by declining groundwater levels in the Madera Subbasin.

Section 07

Finances

This section focuses on a recap of the Fiscal Year 2024-2025 revenue and expenditures. It also gives a quick summary on grant funding considerations, cost saving measures and future anticipated costs.

Section 08

Fees

Current fees include a Groundwater Sustainability Agency (GSA) administrative fee and a Groundwater Sustainability Plan (GSP) domestic well mitigation fee in the Madera Subbasin.

Section 09

Additional Resources

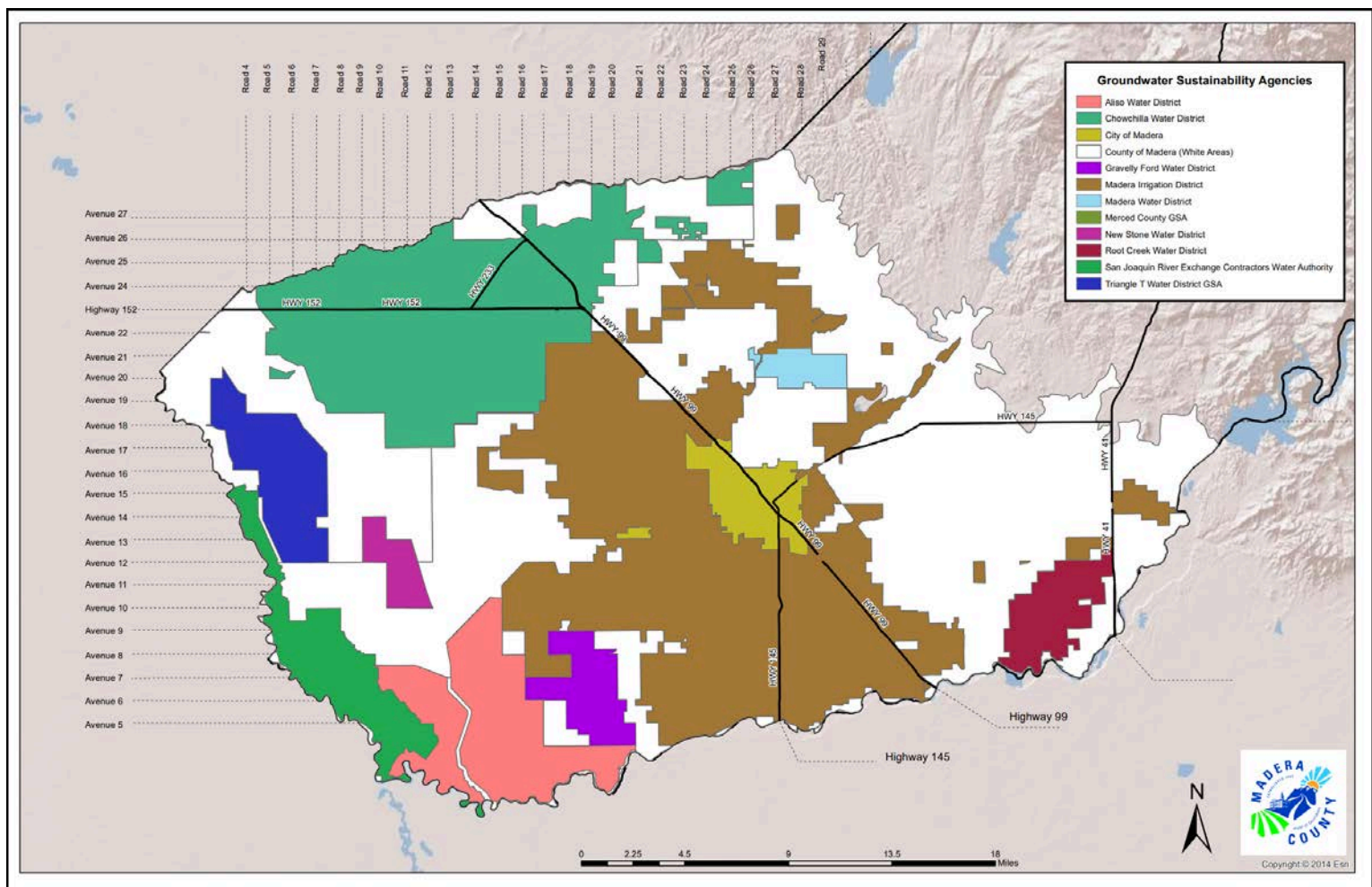
There are several ways to stay informed and connected. The Water and Natural Resources website offers more information on programs and tools, along with opportunities to receive updates, attend meetings, and connect with staff.

SECTION 01: INTRODUCTION

MADERA COUNTY GROUNDWATER SUSTAINABILITY AGENCIES: SUBBASINS

The Madera County Groundwater Sustainability Agencies (MCGSA) are located in the Madera, Chowchilla, and Delta-Mendota Subbasins. These agencies were formed under the requirements of the California Sustainable Groundwater Management Act (SGMA). The areas that fell under the MCGSA responsibility during GSA formation are the lands that were not within existing irrigation or water districts that chose to form their own GSAs.

Under the California SGMA, the MCGSA have the authority to limit extractions from groundwater wells, establish groundwater allocations, and adopt rules and regulations with the Madera County Board of Supervisors acting as the Board of Directors for the MCGSA.



GROUNDWATER SUSTAINABILITY PLANS: STATUS

MADERA COUNTY GSA Madera Subbasin

The Department of Water Resources (DWR) evaluated the four Groundwater Sustainability Plans (GSPs) submitted for the seven Madera Subbasin Groundwater Sustainability Agencies, and determined the four GSPs were approved with a list of conditions to address in 2025.

As of January 2025, the 2025 Joint GSP Amendment was completed to address the required corrective actions, adopted, and then submitted to DWR as part of the first periodic evaluation.

The Madera Subbasin GSP Annual Report for Water Year 2025 has been submitted to DWR and can be viewed on our [website](#).

MADERA COUNTY GSA Chowchilla Subbasin

In June 2025, following the State Water Resources Control Board (SWRCB) staff's review of the January 2025 Revised GSP, the SWRCB determined that a probationary designation for the Subbasin was not necessary and that it would return the Subbasin to DWR's jurisdiction.

As of April 2026, the January 2025 Revised GSP remains under review by DWR staff.

The Chowchilla GSP Annual Report for Water Year 2025 has been submitted to DWR and can be viewed on our [website](#).

MADERA COUNTY GSA Delta-Mendota Subbasin

At its April 7th Board meeting, the SWRCB approved a resolution to return the Delta-Mendota Groundwater Subbasin to DWR's jurisdiction under the Sustainable Groundwater Management Act (SGMA).

The 21 GSAs in the Delta-Mendota Subbasin formed a Joint Powers Authority to continue implementing and coordinating among the GSAs in the Subbasin for the subbasin wide GSP.

The Delta-Mendota GSP Annual Report for Water Year 2025, has been submitted to DWR and can be viewed on our [website](#).

SECTION 02: ALLOCATIONS

What is an allocation?

An allocation is a water budget made available to agricultural water users within the Madera County Groundwater Sustainability Agencies (MCGSA). Over time, the allocated water budget will decrease to sustainable levels.

Who has an allocation?

There are allocations for irrigated acres within the MCGSA in the Madera, Chowchilla, and Delta-Mendota Subbasins.

What makes up an allocation?

Allocations are made up of two types of water: Sustainable Yield (SY) and Transitional Water (TW).

- SY is the amount of natural groundwater present in the subbasins through seepage and percolation.
- TW is excess groundwater being pumped from the subbasins; this decreases over time until it reaches zero.

How is my allocation calculated?

If your land has been irrigated prior to June 08, 2021 (Resolution 2021-069) then you will receive both SY and TW. If you decide to opt-in “Never Irrigated” lands you are only eligible to receive SY for the irrigated acreage portion. Please see tables below.

Madera County GSA				Madera County GSA				Madera County GSA			
Madera Subbasin		Inches of ETAW		Chowchilla Subbasin		Inches of ETAW		Delta-Mendota Subbasin		Inches of ETAW	
Year	SY	TW	Total	Year	SY	TW	Total	Year	SY	TW	Total
2026	12.3	12.9	25.2	2026	7.1	16.8	23.9	2026	15.3	17.2	32.5
2027	12.3	12.0	24.3	2027	7.1	15.6	22.7	2027	15.3	16.0	31.3
2028	12.3	11.1	23.4	2028	7.1	14.4	21.5	2028	15.3	14.7	30.0
2029	12.3	10.2	22.5	2029	7.1	13.2	20.3	2029	15.3	13.5	28.8
2030	12.3	9.2	21.5	2030	7.1	12.0	19.1	2030	15.3	12.3	27.6

What happens if I am under my allocation?

You will be able to carry over unused allocation to the following calendar year. Currently, carryover does not have any decay factor and/or expiration date.

What happens if I go over my allocation?

Currently, there are penalties in place for using water over the farm unit allocation. See the table for amounts per year.

Madera County GSA		Madera County GSA			Madera County GSA	
Madera Subbasin	Resolution 2022-145	Chowchilla Subbasin	Resolution 2022-143		Delta-Mendota Subbasin	Resolution 2022-144
Year	Amount Over the Farm Unit Allocation Penalty	Year	Amount Over the Farm Unit Allocation Penalty	Additional Penalty	Year	Amount Over the Farm Unit Allocation Penalty
2023	\$100 / AF	2023	\$100 / AF	\$1000/Farm Unit	2023	\$100 / AF
2024	\$200 / AF	2024	\$200 / AF	\$1000/Farm Unit	2024	\$200 / AF
2025	\$300 / AF	2025	\$300 / AF	\$1000/Farm Unit	2025	\$300 / AF
2026	\$400 / AF	2026	\$400 / AF	\$1000/Farm Unit	2026	\$400 / AF
2027	\$500 / AF	2027	\$500 / AF	\$1000/Farm Unit	2027	\$500 / AF

2026 - 2040 ALLOCATIONS

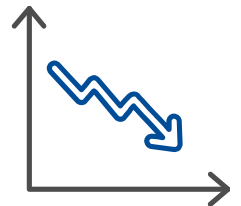
In September 2025, the Board of Directors of the Madera County Groundwater Sustainability Agencies (MCGSA), adopted the 2026–2040 Allocation Tables in response to grower’s request. These tables help show what to expect over time, making it easier to plan ahead as groundwater use is gradually reduced. The goal is to reach sustainable groundwater use by 2040.



Madera County GSA			
Madera Subbasin	Inches of ETAW		
Year	Sustainable Yield	Transitional Water	Total
2026	12.3	12.9	25.2
2027	12.3	12.0	24.3
2028	12.3	11.1	23.4
2029	12.3	10.2	22.5
2030	12.3	9.2	21.5
2031	12.3	8.3	20.6
2032	12.3	7.4	19.7
2033	12.3	6.5	18.8
2034	12.3	5.5	17.8
2035	12.3	4.6	16.9
2036	12.3	3.7	16.0
2037	12.3	2.8	15.1
2038	12.3	1.8	14.1
2039	12.3	0.9	13.2
2040	12.3	0.0	12.3

Madera County GSA			
Chowchilla Subbasin	Inches of ETAW		
Year	Sustainable Yield	Transitional Water	Total
2026	7.1	16.8	23.9
2027	7.1	15.6	22.7
2028	7.1	14.4	21.5
2029	7.1	13.2	20.3
2030	7.1	12.0	19.1
2031	7.1	10.8	17.9
2032	7.1	9.6	16.7
2033	7.1	8.4	15.5
2034	7.1	7.2	14.3
2035	7.1	6	13.1
2036	7.1	4.8	11.9
2037	7.1	3.6	10.7
2038	7.1	2.4	9.5
2039	7.1	1.2	8.3
2040	7.1	0.0	7.1

The Allocation Tables (2026–2040) show how groundwater use will change over time to reach sustainability. Allocations may include a combination of sustainable yield and transitional water, depending on eligibility to help ease the transition. Each year, transitional water is reduced, gradually lowering total allocations.

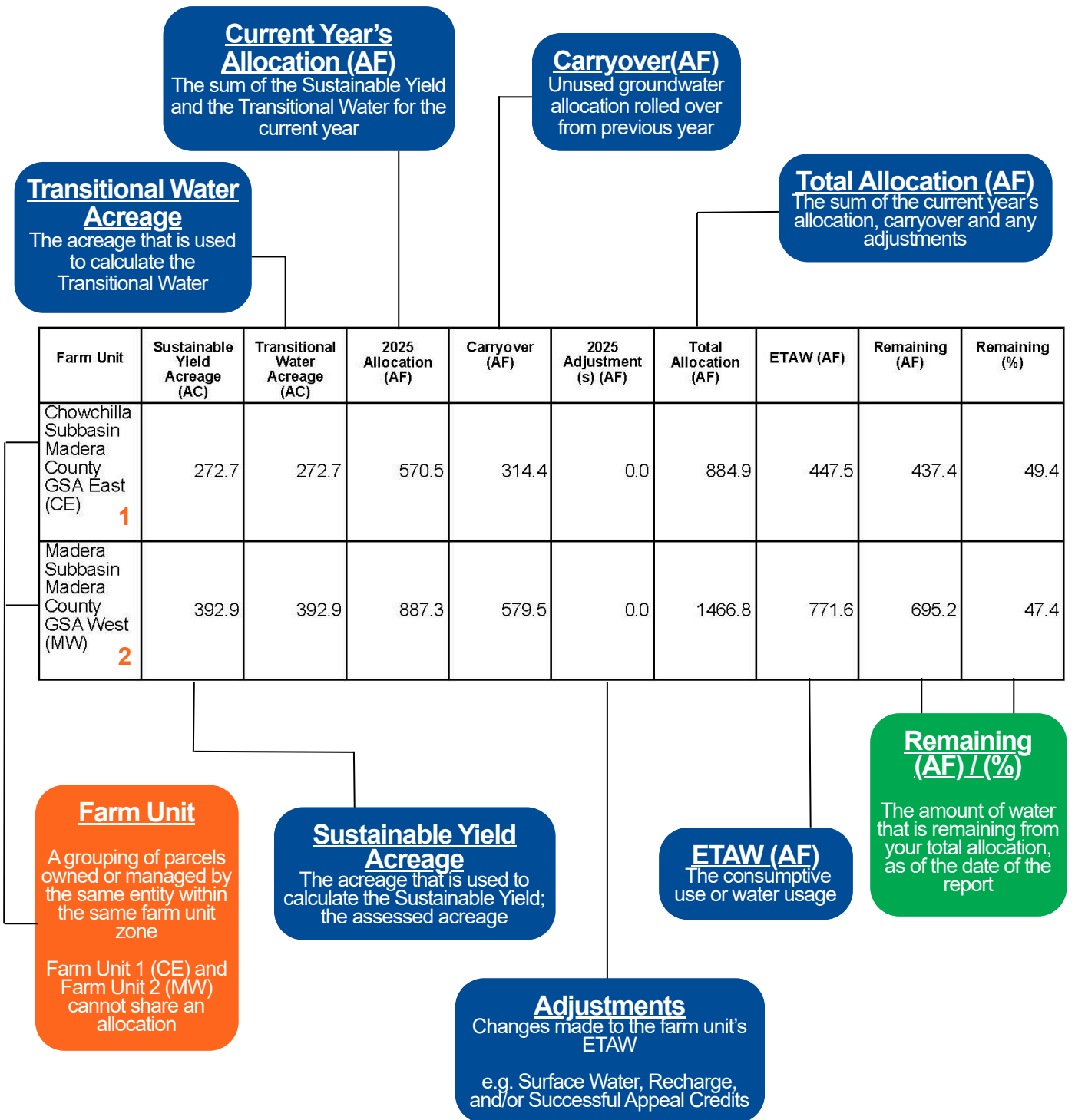


To determine which Allocation Table applies to your property, you will need to identify the Subbasin in which you are located. Property owners can find this information by using the [interactive map](#) available on our website or by contacting our office. Our team can help connect you with your assigned Water Resources Specialist, who can provide guidance based on the location of your property.

Madera County GSA			
Delta-Mendota Subbasin	Inches of ETAW		
Year	Sustainable Yield	Transitional Water	Total
2026	15.3	17.2	32.5
2027	15.3	16.0	31.3
2028	15.3	14.7	30.0
2029	15.3	13.5	28.8
2030	15.3	12.3	27.6
2031	15.3	11	26.3
2032	15.3	9.8	25.1
2033	15.3	8.6	23.9
2034	15.3	7.4	22.7
2035	15.3	6.1	21.4
2036	15.3	4.9	20.2
2037	15.3	3.7	19.0
2038	15.3	2.5	17.8
2039	15.3	1.2	16.5
2040	15.3	0.0	15.3

UNDERSTANDING A GROUNDWATER ALLOCATION REPORT

Farm Unit Summary: This section details the breakdown of the total allocation (AF), the amount of water used (ETAW), and the amount of allocation remaining (AF) within a farm unit; as of the date of the Groundwater Allocation Report.



UNDERSTANDING A GROUNDWATER ALLOCATION REPORT

Farm Unit Parcel Summary: This section is a breakdown of the total allocation (AF), the amount of water used (ETAW), and the amount of allocation remaining (AF) by parcels within the farm unit; as of the date of the Groundwater Allocation Report.

Farm Unit Summary

Farm Unit 1

The columns reflect the same data as the farm unit summary section but is broken down to show each individual parcel's data

Farm Unit	Sustainable Yield Acreage (AC)	Transitional Water Acreage (AC)	2025 Allocation (AF)	Carryover (AF)	2025 Adjustment (s) (AF)	Total Allocation (AF)	ETAW (AF)	Remaining (AF)	Remaining (%)
Chowchilla Subbasin Madera County GSA East (CE) 1	272.7	272.7	570.5	314.4	0.0	884.9	447.5	437.4	49.4

Parcel	Sustainable Yield Acreage (AC)	Transitional Water Acreage (AC)	2025 Allocation (AF)	Carryover (AF)	2025 Adjustment (s) (AF)	Total Allocation (AF)	ETAW (AF)	Remaining (AF)	Remaining (%)
000-111-222	38.7	38.7	81.0	39.2	0.0	120.2	74.8	45.4	37.8
000-111-223	38.6	38.6	80.7	51.6	0.0	132.3	74.0	58.3	44.1
000-111-224	158.9	158.9	332.3	161.5	0.0	493.8	298.7	195.1	39.5
000-111-225	36.6	36.6	76.5	62.1	0.0	138.6	0.0	138.6	100.0

Farm Unit Parcel Summary

The parcels that are within Farm Unit 1

FARM UNIT CHANGES

What is a farm unit?

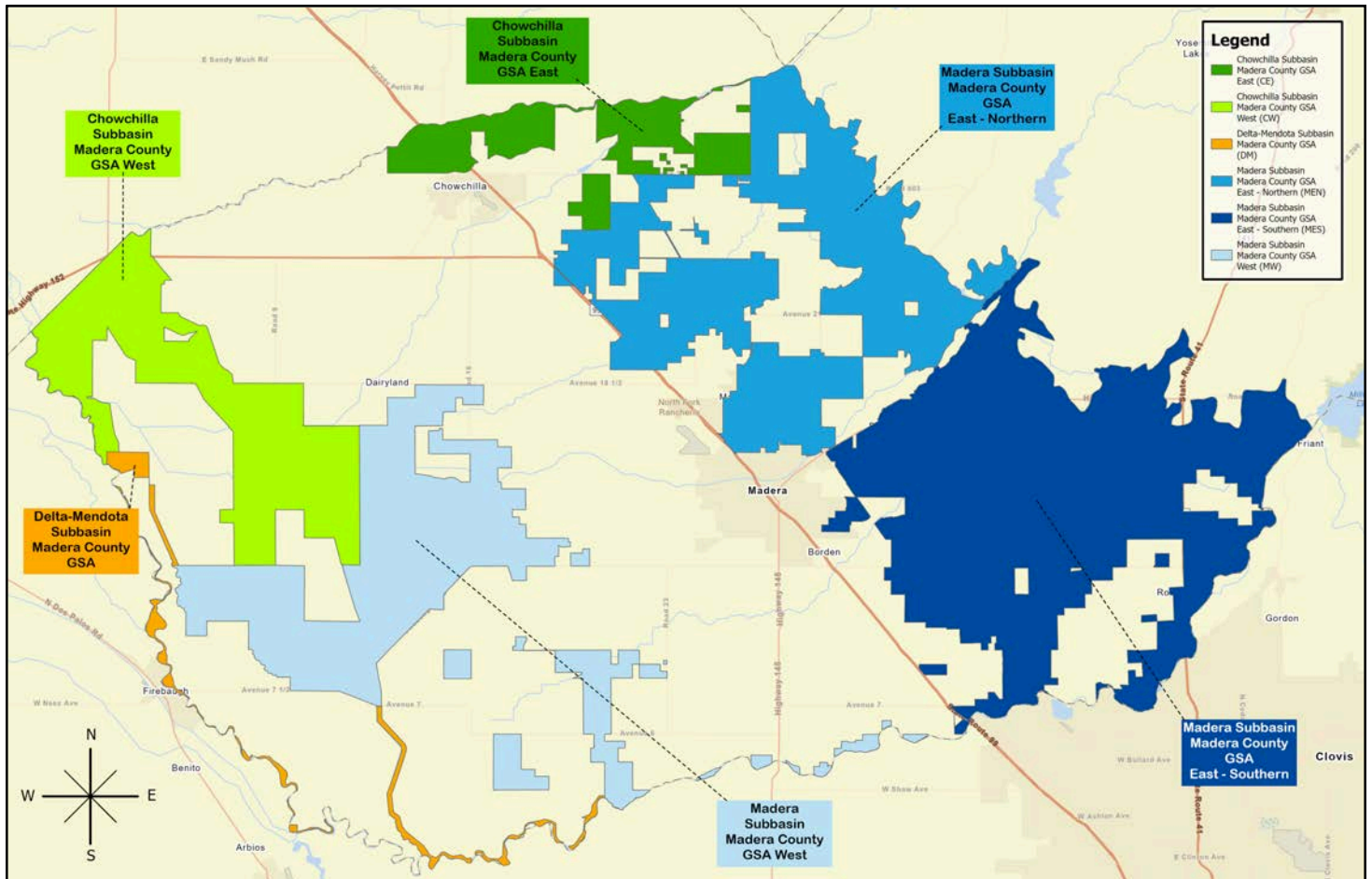
To allow for both flexibility and to mimic real-world farming conditions in which resources are shared among owned or commonly managed lands, the Madera County Groundwater Sustainability Agencies' (MCGSA) per-acre, parcel-based allocations will be allowed to be shared within designated "farm units".

For the purpose of sharing water allocations, more than one parcel can be grouped together to form a farm unit. In order for the grouping to exist, the parcels would need to be owned or managed by the same family, company, or organizations.

When are changes to farm units allowed?

In October 2025, the Board of Directors adopted a policy for Allocation of Carryover Credits and Penalties during Farm Unit Reorganization (Resolution 2025-114) for the Madera County GSAs.

At the end of each year, the MCGSA allow farm units to be reorganized within farm unit zones. This might include a farm unit that is split from one farm unit into multiple farm units. This also might include a farm unit that is created by combining existing farm units. If members of a farm unit wish to split a farm unit or sell land within a farm unit, MCGSA staff recommend notifying the MCGSA at least 30 days before the proposed split or sale.



Farm Unit Zone Map as reflected in the SGMA Portal of MCGSA coverage as of April 2026

SECTION 03: MEASUREMENT

How is my water measured in 2026?

The Madera County Groundwater Sustainability Agencies (MCGSA) measure water used by irrigated agriculture within the MCGSA. Currently, the MCGSA offers two methods for growers to choose from for measurement:

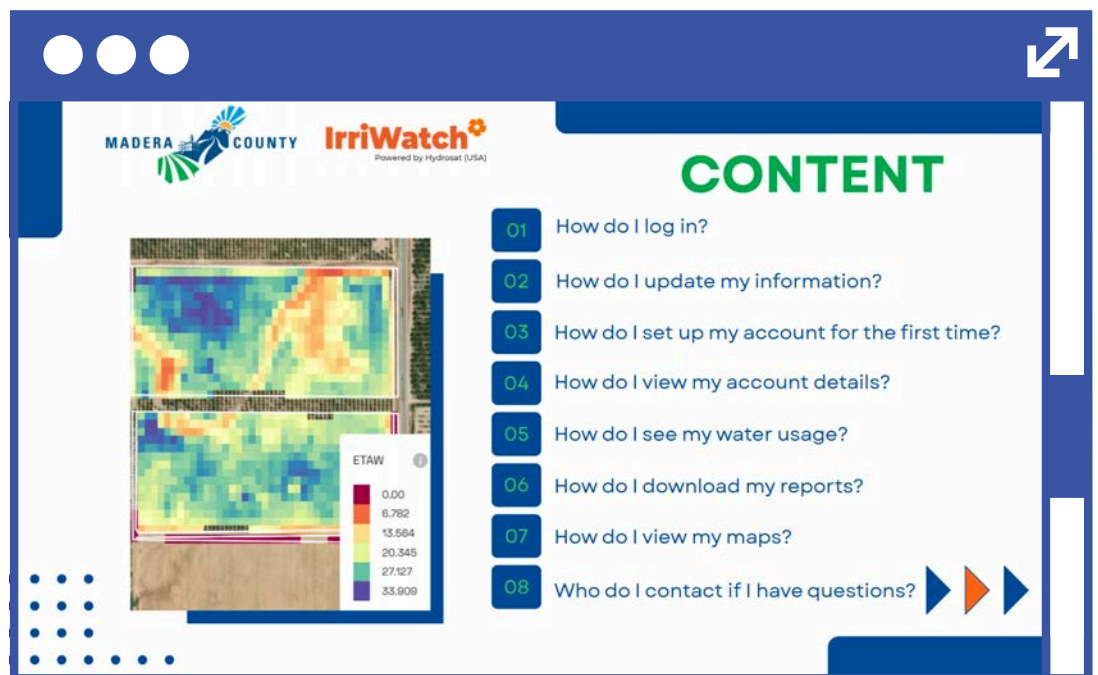
1. **Hydrosat (IrriWatch)** is a remote sensing measurement method that uses satellite data algorithms to measure evapotranspiration (total ET) and calculate evapotranspiration of applied water (ETAW). Hydrosat (IrriWatch) offers access to an online portal with personalized logins that allow growers to monitor data in real time.
2. **Private meters** with paper reports mailed and e-mailed monthly.

When can I change my measurement method?

Growers can choose to change their measurement method at the start of each year. Once a method is selected, it must be followed for the entire year. If a grower wishes to keep the same measurement method, no action is needed. All parcels within a farm unit must have the same measurement method.

If a landowner opts to use private groundwater flow meters but does not meet the standards outlined in the resolutions, the satellite measurement method will be assigned as the method instead.

To learn more about IrriWatch, visit maderacountywater.com/measurement/ where you'll find a helpful guide covering all the key information.



PRIVATE METER MEASUREMENT METHOD

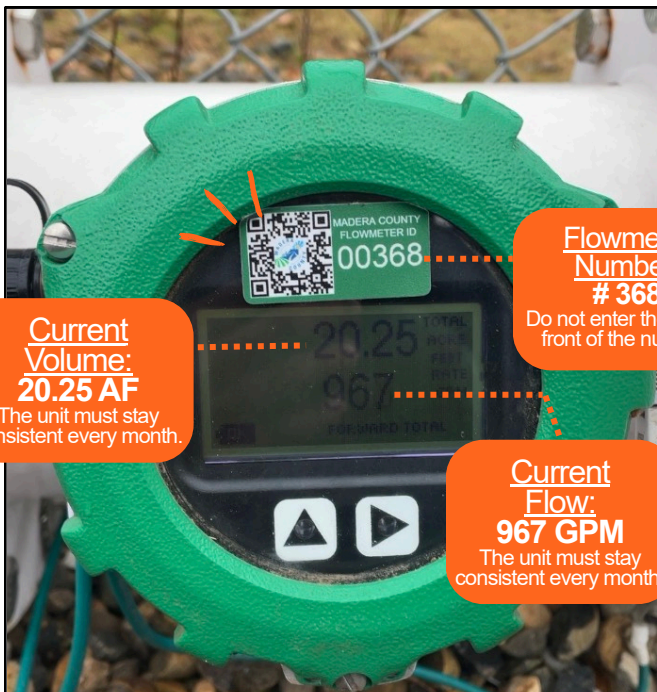
What are the requirements for using private meters?



Establishing Approval

To use your meter(s) as the primary method for tracking water usage, they must first be approved. Meters cannot be selected as the primary measurement method until approval is granted. Here are the requirements:

1. Provide a map showing the precise location of your groundwater well(s), the corresponding parcel(s) and field(s) that are served by those well(s).
2. Submit photographs and a meter installation report from an approved vendor for the well(s) that supply water to the parcel(s).
3. Ensure that the meter(s) comply with calibration standards by providing a calibration report from an approved vendor certified by the Madera County Groundwater Sustainability Agencies (MCGSA) every two years.*
4. Confirm that the designated well(s) exclusively serve the identified parcel(s) or field(s).*
5. Provide a signed attestation verifying that all the information submitted accurately represents the current conditions for the well(s).*



Make sure your meter(s) are in [Total Screen](#) or [Forward Total](#) with no error codes.

Monthly meter readings are due by the 10th of each month.

How to submit monthly meter data using a mobile device:

1. Open the camera application and scan the Quick Response (QR) code on the Madera County Flowmeter Identification (ID) Sticker.
2. Default browser will pop up at the bottom of your screen. Click "Open in Edge".
Tip: It may say something different depending on your default browser.
3. If this is your first time, click "**new user**".
4. Enter first and last name, email address, and phone number.
5. Current date and time will auto-populate when you hit the blue checkmark.
6. Click the target symbol to detect the current location.
Tip: Make sure your location services are enabled. You can adjust this in your phone settings.
7. Take a photo of the flowmeter's readout and fill in the corresponding data.
Tip: Make sure the flowmeter ID is visible in your photo. If not, add an additional photo.
8. You should receive a text message as confirmation that the submission went through.
Tip: Application available for Android Users. Reach out to your Water Resources Specialist to get set up.

PRIVATE METER MEASUREMENT METHOD

Summary of Requirements for Monthly Meter Reading Reporting: (Meter Rule Refinement) **

1. Monthly meter readings must be submitted via the Madera County Groundwater Sustainability Agencies (MCGSA) web form between the 1st–10th of each month (12 months/year).
2. If reporting issues occur, notify your assigned water resource specialist promptly. A grace period is allowed from the 11th–20th.
3. Data submitted after the 20th is considered missing and won't be included in allocation reports.
4. If a meter or meter sticker is replaced, lost, or tampered with, a new meter sticker must be issued. Readings must be taken before removal and after reinstallation.
5. Malfunctioning meters must be repaired or replaced within 10 business days. Submit new readings after repair. A new meter sticker must be installed if the meter was replaced.
6. Farm units must have separate meters for groundwater and surface water.
7. Meters must be calibrated every two years. Calibration can occur any time within the due calendar year, including off-season.
8. Two months of unreported or unusable data within one calendar year (consecutive or not) will result in automatic conversion to satellite measurement method.

*For a full list of MCGSA approved vendors, attestation forms, and checklists, please visit maderacountywater.com/measurement/.

**For the full Groundwater Flow Meter Rule Refinement for MCGSA, please visit www.maderacountywater.com/resolutions/

Using a Private Meter to Appeal Satellite Data

If you wish to dispute the satellite data used for measurement, you have the option to submit your own data for review by a third party at the end of the calendar year. The decision made by the third party will be final. Guidelines for using meters for the appeals process follow the same approval process as using meters for your measurement method. For a complete guideline of how to appeal satellite data, please refer to Resolution 2024-121 found on maderacountywater.com/resolutions/.



Ellis Basin Pump Station

SECTION 04: LAND REPURPOSING

What is the Multibenefit Land Repurposing Program?

The Multibenefit Land Repurposing Program (MLRP) is a California Department of Conservation (DOC) block grant aimed at funding local entities in regions needing to improve groundwater sustainability. Madera County is one of eight grantees across the state that has been awarded an MLRP grant to develop and implement a local MLRP program. The Madera County MLRP helps incentivize landowners to voluntarily transition irrigated farmland to more sustainable uses, while protecting local economies and communities.



Stuart Woolf Agave Farm

The program is voluntary yet recognizes that SGMA-related impacts have and will require many growers in Madera County to make land use changes. MLRP offers the opportunity for ag landowners to access state and other funding sources to proactively transition their land (or a portion of their land) to a less water intensive use. The goal of the Madera County MLRP is to implement at least seven multibenefit projects, prioritizing those nearby communities, domestic wells, and waterways. The Madera County Multibenefit Agricultural Land Repurposing Plan (MALRP) also includes strategies for building a durable, long-term framework to sustain land repurposing beyond the initial grant period. The Madera County team has begun implementation of the La Viña Community Buffer pilot project as well as successfully selected six projects for funding awards. These projects represent a diverse portfolio of project types and outcomes aligned with regional priorities, including stormwater management, community/cultural space, recharge/flood management, agave crop transition, community buffer zone, and a large-scale recharge project.



Water and Natural Resources Staff:
Allison Medley & Aleta Allen

THE LA VIÑA PILOT PROJECT IS AN ON-GOING SUCCESS

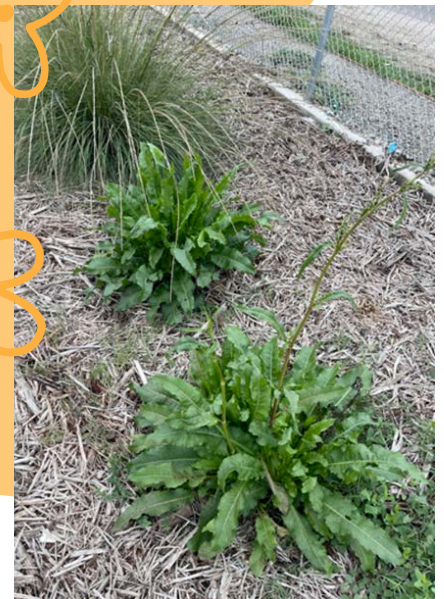
The project in the community of La Viña created a “buffer” area between residential homes and an adjacent ag parcel that now supports water savings and air quality improvements.

The pilot project area in La Viña encompasses a little over 5-acres of land owned by a local farmer that was planted with almond and walnut orchards. To make room for the new habitat area, four rows of trees were removed to create pollinator habitat and partially fallowed land that will be maintained for a minimum of 10 years (per MLRP program requirements).

The habitat component of this project consists of two hedgerows. The first and largest hedgerow borders the residential housing units. This hedgerow is 2,022 feet long and will grow to an approximate height of 10 feet.

The second hedgerow is to beautify the street side for the community and provide diverse pollinator habitat. This hedgerow is 270 feet long and consists of small-medium sized shrubs that will grow to a maximum of 6 feet.

Both hedgerows will provide drought-tolerant native plants that will establish climate-smart pollinators and beneficial insect habitat. This habitat will have the potential to reduce pests such as leaf-footed bugs and navel orange worms, which could help reduce the number of pesticides that need to be applied to the remaining orchards.



SECTION 05: RECHARGE

What is going on with recharge?

In March 2024, the Board of Directors adopted the Recharge Credit Policy (Resolution 2024-030) for the Madera County Groundwater Sustainability Agencies (MCGSA). This allows growers to obtain water credits for (1) water purchased from a water right or contract and (2) water diverted from an approved flood event.

Recharge credits are subject to a floor of 75% and a ceiling of 90%, with additional documentation required for higher credits.

The policy limits water extraction to the aquifer where recharge occurred and allows credits to be carried over from one year to the next. Notably, dairy lands are not subject to any additional burdens beyond existing laws.

How much recharge credits have been applied?

Direct Recharge

In 2024, the MCGSA applied 29,244 acre-feet (AF) of direct recharge credits to 15 farm units. In 2025, an additional 1,426 AF was applied to 3 farm units. In total, as of April 2026, approximately 30,670 AF of direct recharge credits has been applied across 18 farm units.

In Lieu Recharge, Purchased Surface Water from a Water Right or Contract:

In 2023, the MCGSA applied 559 AF of in-lieu recharge and/or surface water credits to 5 farm units. In 2024, 23,452 AF was applied to 29 farm units, followed by 15,382 AF applied to 20 farm units in 2025. In total, as of April 2026, approximately 39,393 AF of in-lieu recharge and/or surface water credits has been applied across 54 farm units.



Interested in recharge?

The MCGSA maintains a list of potential projects for grant funding opportunities. Contact your Water Resources Specialist to get on the list or visit our website to complete the [Madera County Recharge Interest Form](#).

SECTION 06: MADERA DRY WELL PROGRAM

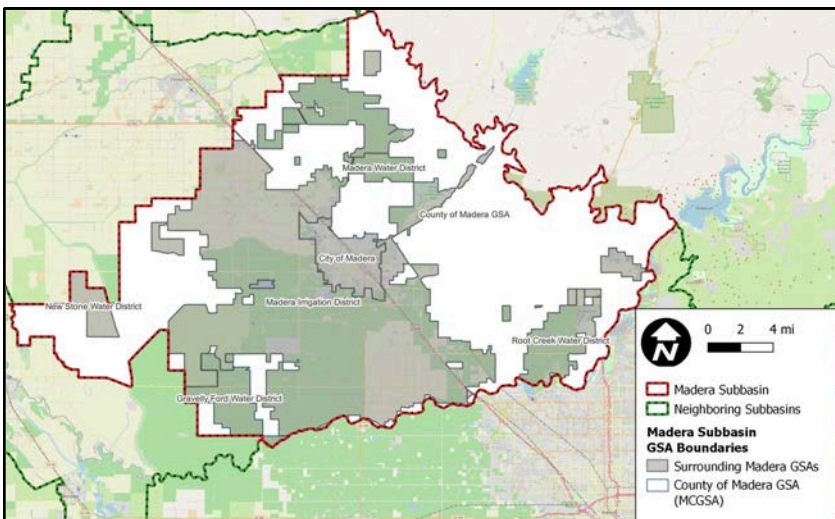
About Madera County GSA's Dry Well Program

The Madera County Groundwater Sustainability Agencies (MCGSA) Dry Well Program (Program) provides financial assistance to landowners impacted by declining groundwater levels in the Madera Subbasin, within the MCGSA. This Program helps fund (up to \$35,000) the drilling of new domestic well or connection to an existing community water system to replace those that have gone dry or been damaged by subsidence.

MCGSA Dry Well Program Contact Information

Phone: (559) 655-6807 | Email: info@maderadrywell.com | Website: www.maderadrywell.com

Madera County GSA Dry Well Program Eligibility



To determine which GSA your property is within, please visit the Program website at maderadrywell.com.

Pre-Qualified Drillers

For a list of pre-qualified drillers, please visit maderadrywell.com.

Madera County GSA Dry Well Program Process

Apply	Assessment	Approval	Payment	Record
Complete application and submit a \$100 application and assessment fee. If the well qualifies for mitigation, the application and assessment fee will be reimbursed as an eligible mitigation cost.	MCGSA or its agents will conduct a well assessment.	If well qualifies, the landowner will solicit three (3) bids from well drillers - at least two (2) bids must be from the MCGSA qualified well driller list. MCGSA will approve one of the bids.	MCGSA will advance the landowner up to \$35,000 in eligible mitigation costs on a schedule set by MCGSA. At completion, the landowner must provide sufficient documentations to support the amount advanced, and landowner must return any advanced funds to MCGSA that were not used (as specified in landowner agreement).	Record of mitigation is filed on the deed.

Eligibility Requirements

- Must be a landowner with a domestic well located within the MCGSA boundaries.
- Property must have a domestic well that went dry after 1/1/2026 or is on the Self-Help Enterprises interim water assistance list (with a dry domestic well due to declining groundwater levels that occurred after the 1/1/2020 cutoff).
- Property owner must have owned property for a minimum of one year.
- Dwelling unit must be considered "habitable."



For more information, scan the QR Code for Program Details & Application

Contact Information for Surrounding Madera Subbasin GSAs

Madera Irrigation District, City of Madera, Madera Water District - (559) 655-9099
 Root Creek Water District - (559) 255-2305
 Gravelly Ford Water District - (559) 474-1000
 New Stone Water District - (559) 834-6677

SECTION 07: FINANCES

Financial Recap for Fiscal Year 2024–2025 (FY 24-25)

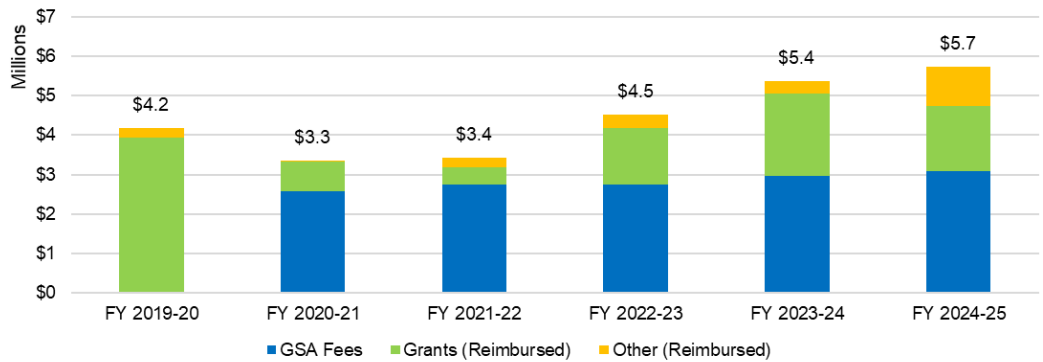
The Madera County Groundwater Sustainability Agencies (MCGSA) is funded through a combination of GSA Admin Fee, grant reimbursements, and other revenues. The Admin Fee provides a stable, ongoing funding source to support core operations such as regulatory compliance, staffing, and program coordination. Grant and reimbursed funding help expand programs, but these sources are temporary and vary year to year.

Revenue Trends Over Time

The MCGSA revenues have increased over the past several years, reaching about \$5.7 million in FY 24-25. This increase is supported by grant funding and reimbursements, which can vary depending on program activity and are not a reliable source of funding from year to year. While these funds help support programs, the Admin Fee remains the most reliable source for ongoing operations.

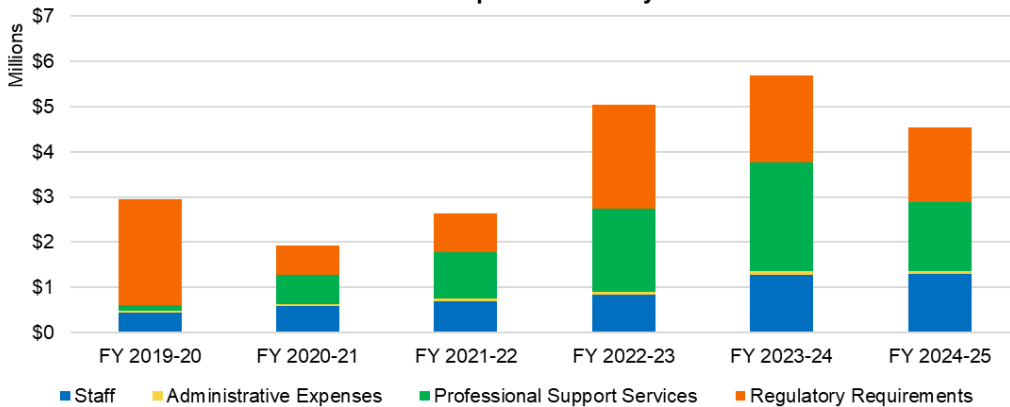
In FY 24-25, revenue was about 24% higher than expenses primarily from reimbursed grant activity.

MCGSA Revenue Summary



In FY 24-25, expenses decreased by approximately 24%. This indicates the MCGSA brought in more revenue than it spent, allowing for more savings to support future needs.

MCGSA Expense Summary



Use of Funds

In FY 24-25, the MCGSA expenses totaled about \$4.6 million. Spending was primarily driven by professional support services (such as technical, legal, and financial expertise) and regulatory compliance (including groundwater monitoring, reporting, and SGMA requirements), which continue to be the largest cost areas. Additional costs include staffing and administrative expenses that support daily operations and program coordination.

FINANCIAL OBSERVATIONS



01

Grant Funding Considerations

Grant funding has temporarily expanded the capacity to support projects and planning. However, grants are not considered a sustainable long-term funding source, and current State grant opportunities remain limited.

02

Cost Saving Measures

To help reduce operational costs, several services have been transitioned in-house, including financial analysis, program translation, outreach coordination, grant administration and legislative tracking. Additionally, no Verification Project was conducted in 2025 based on grower feedback. Cost savings have also been achieved by reducing measurement methods from three to two through the use of IrriWatch (Hydrosat) and private meters, eliminating the need for LandIQ.

03

Anticipated Future Costs

Anticipated future costs include revisions to the Madera Joint Groundwater Sustainability Plan (GSP) Amendment, Chowchilla GSP Amendment, and Delta-Mendota GSP, as required by the Department of Water Resources (DWR), as well as potential gaps in recharge grant funding, expansion of the well monitoring network, and ongoing land repurposing monitoring efforts.

SECTION 08: FEES

GSA Admin Fee

The GSA Admin fee is designed to help the Madera County Groundwater Sustainability Agencies (MCGSA) recover the administrative costs associated with GSA activities, such as outreach, grant administration, technical support services, legal and professional services, studies (e.g., recharge), annual and five-year reporting, revisions to the Groundwater Sustainability Plans (GSPs), and grower assistance by addressing questions and concerns.

The current GSA Admin fee is approximately \$27 per irrigated acre in the Madera, Chowchilla, and Delta-Mendota Subbasins. It increases annually based on the previous year's Consumer Price Index (CPI) and appears on property tax bills as 'County GSA Fee'.

GSP Project Fee

In 2022, the MCGSA conducted a rate study under proposition 218 to be able to adopt and collect fees to implement projects, such as recharge, land repurposing, and domestic well mitigation.

On March 4, 2025, the injunction that was filed for the Madera and Delta Mendota subbasin was dissolved, and the MCGSA could resume the collection of fees, however, it was decided that the previously approved fee for projects would be amended and reduced to only collect fees for a Domestic Well Mitigation Program (Madera Dry Well Program) in the Madera Subbasin.

In July 2025, Resolution 2025-067, establishing the revised fee for the Domestic Well Mitigation Program in the Madera Subbasin, was adopted. The GSP fee starts out as \$59 per enrolled acre for 2026 and appears on property tax bills as 'GSP Project Fee - Madera Subbasin'.

How it will appear on the Madera County Property Tax Bill:

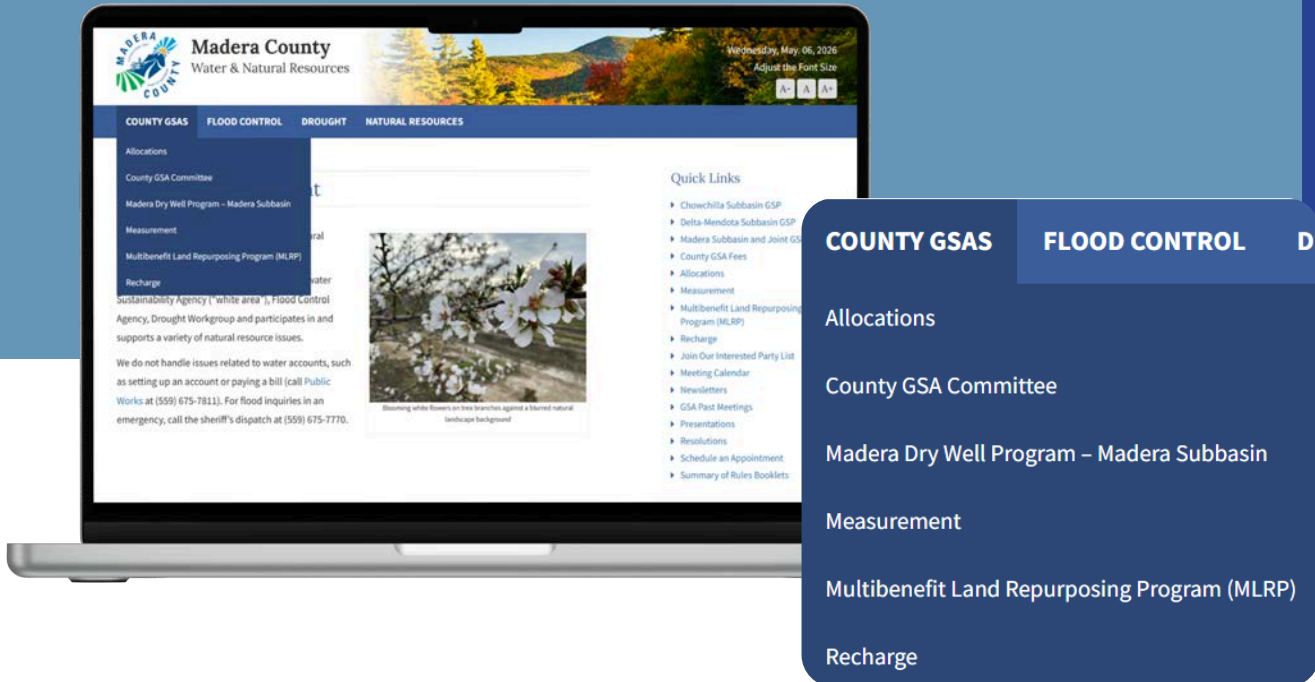
PHONE #	DESCRIPTION	DIR CHRG	PHONE #	DESCRIPTION	DIR CHRG	PHONE #	DESCRIPTION	DIR CHRG
(559) 662-8015	County GSA Fee	\$6,260.96	(559) 662-8015	GSP Project Fee-Madera Subbasin	\$15,268.34	(559) 662-8015	GSA Penalties Madera	\$6,480.00

GSA Admin Fee

GSP Fee

If the parcel has any outstanding penalties, this is how it will appear

SECTION 09: ADDITIONAL RESOURCES



The Water and Natural Resources website provides additional information on all sections mentioned. Visit <https://www.maderacountywater.com/> and use the dropdown menu to explore each section.

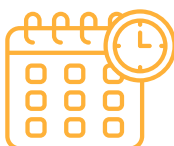
Stay In The Loop

Want to stay up to date with the Madera County Groundwater Sustainability Agencies (MCGSA)? Join the list to start receiving the monthly e-newsletters!
<https://www.maderacountywater.com/join-list/>

Connect With Our Team

If you would like to meet with our team or an assigned Water Resources Specialists for any MCGSA related questions, give us a call or schedule an appointment at www.maderacountywater.com/appointments/.

Keep Up with Madera County GSAs Meetings



The MCGSA Committee meets on the first Tuesday of each month. Items discussed are submitted for approval by the Board of Directors on the second Tuesday of the month. Visit <https://www.maderacountywater.com/county-gsa-committee/> to never miss a meeting!

RESOLUTIONS

The Madera County Groundwater Sustainability Agencies (MCGSA) approved resolutions serve as comprehensive documents that carefully define the guiding principles, rules, and regulations. Below is a list of the resolutions referenced in this booklet. For more information, please refer to the complete resolutions on the Madera County Water and Natural Resources website at maderacountywater.com.

Allocations and Other Demand Management

Resolution No. 2020-166 — Adopts a groundwater allocation approach

Resolution No. 2021-069 — Establishes groundwater allocation amounts for 2021-2025 and farm unit documentation

Resolution No. 2021-113 — Establishes groundwater allocation refinements

Resolution No. 2025-085 — Adopts a groundwater allocation amounts for 2026 through 2040

Resolution No. 2026-040 — Adopting the Chowchilla Subbasin Groundwater Demand Management Programs and Subsidence Mitigation Measures

Appeals

Resolution No. 2024-121 — Revises rules for appealing Satellite Data

Domestic Well Mitigation Program

MCC NO. 12652-23 — Establishes a Domestic Well Mitigation Program for a portion of the Chowchilla Subbasin and develops a working relationship with the Chowchilla Subbasin Growers

Resolution No. 2025-115 — Adopts the Revised Delta Mendota Domestic Well Mitigation Policy

Resolution No. 2025-141 — Adopts the Domestic Well Mitigation Program rules and eligibility criteria for the Madera Subbasin

Resolution No. 2026-017 — Amending the Domestic Well Mitigation Program for the Madera Subbasin and revise procedures to improve implementation

Resolution No. 2026-041 — Amending the Domestic Well Mitigation Program for the Madera Subbasin and refinement to the program rules

Farm Unit

Resolution No. 2021-069 — Establishes groundwater allocation amounts for 2021-2025 and farm unit documentation

Resolution No. 2025-114 — Adopts a policy for Allocation of Carryover Credits and Penalties during Farm Unit Reorganization

Fees

Resolution No. 2019-172 — Approves a GSA Administrative fee for the Madera, Chowchilla, and Delta-Mendota Subbasins

Resolution No. 2022-086 — Adopts a GSP fee for the Madera Subbasin

Resolution No. 2022-087 — Adopts a GSP fee for the Delta-Mendota Subbasin

Resolution No. 2025-067 — Adopts a Domestic Well Mitigation fee for the Madera Subbasin

RESOLUTIONS

The Madera County Groundwater Sustainability Agencies (MCGSA) approved resolutions serve as comprehensive documents that carefully define the guiding principles, rules, and regulations. Below is a list of the resolutions referenced in this booklet. For more information, please refer to the complete resolutions on the Madera County Water and Natural Resources website at maderacountywater.com.

Land Repurposing

Resolution No. 2022-193 — Adopts the Voluntary Land Repurposing Program and program rules for the Delta-Mendota Subbasin

Resolution No. 2022-194 — Adopts the Voluntary Land Repurposing Program and program rules for the Madera Subbasin

Resolution No. 2023-056 — Adopts State rules for the Targeted Land Repurposing Program (LandFlex)

Measurement

Resolution No. 2022-192 — Adopts measurement methods for the Madera, Chowchilla, and Delta-Mendota Subbasins

Resolution No. 2022-143 — See paragraph 2 explaining the private meter pre-approval process

Resolution No. 2022-144 — See paragraph 2 explaining the private meter pre-approval process

Resolution No. 2022-145 — See paragraph 2 explaining the private meter pre-approval process

Resolution No. 2025-044 — Adopts Groundwater Flow Meter Rule Refinements for a Measurement Method

Penalties

Resolution No. 2022-145 — Establishes penalties in the Madera Subbasin

Resolution No. 2022-143 — Establishes penalties in the Chowchilla Subbasin

Resolution No. 2022-144 — Establishes penalties in the Delta-Mendota Subbasin

Recharge

Resolution No. 2024-030 — Adopts Recharge Credit Policies for the Madera, Chowchilla, and Delta-Mendota Subbasins



200 W. 4th Street, Suite 3100
Madera, CA 93637



(559) 662-8015



maderacountywater.com